

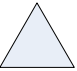



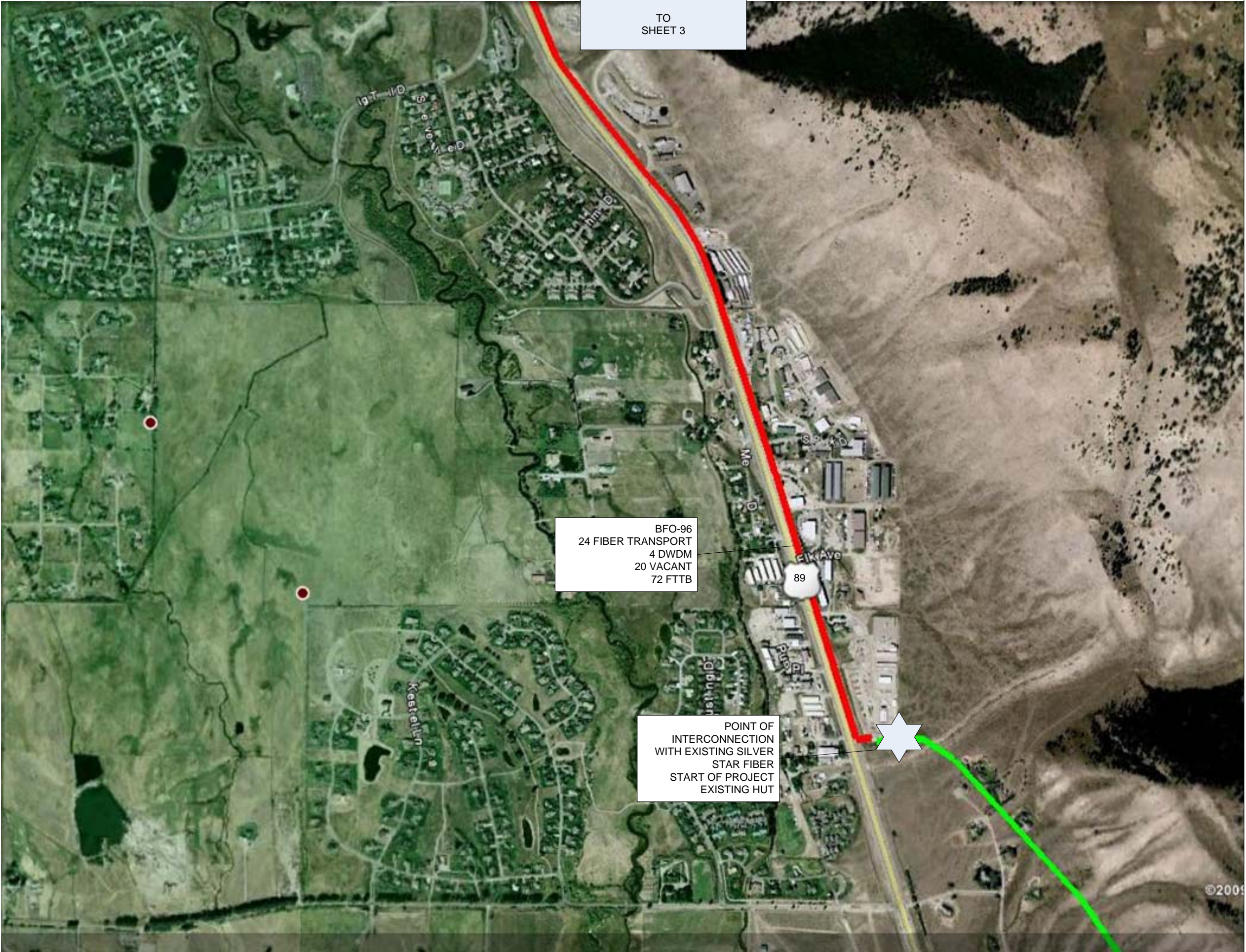


- EXISTING FIBER OPTIC CABLE 
- PROPOSED FIBER OPTIC CABLE 
- ANCHOR INSTITUTIONS 
- PROPOSED ELECTRONICS HUT (POINT OF INTERCONNECTION) 
- POINT OF INTERCONNECTION 
- PROPOSED ELECTRONICS CABINET (POINT OF INTERCONNECTION) 



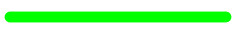
TO
SHEET 3

BFO-96
24 FIBER TRANSPORT
4 DWDM
20 VACANT
72 FTTB

POINT OF
INTERCONNECTION
WITH EXISTING SILVER
STAR FIBER
START OF PROJECT
EXISTING HUT



EXISTING FIBER OPTIC CABLE



PROPOSED FIBER OPTIC
CABLE



ANCHOR INSTITUTIONS



PROPOSED ELECTRONICS
HUT
(POINT OF
INTERCONNECTION)

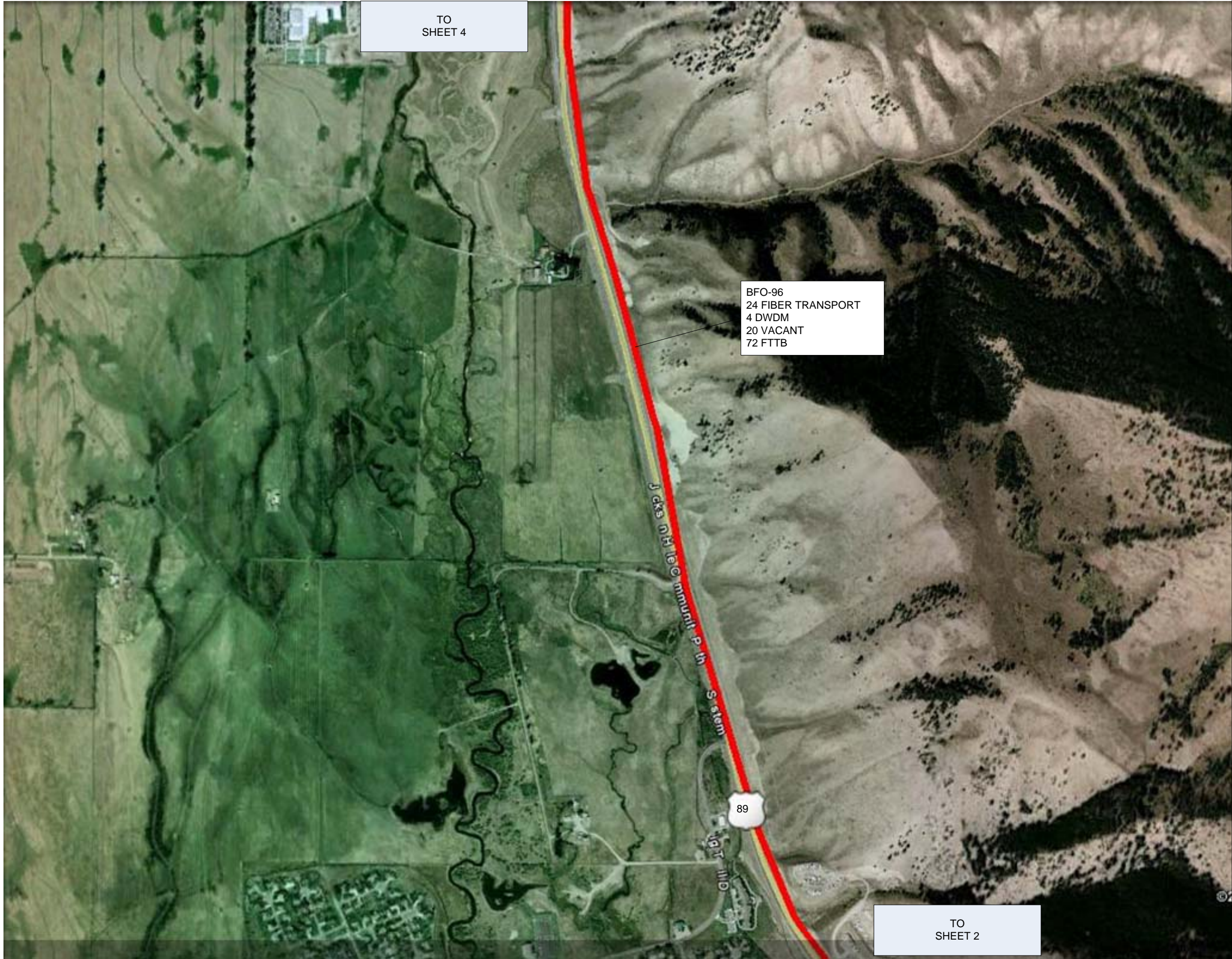


POINT OF INTERCONNECTION



PROPOSED ELECTRONICS
CABINET
(POINT OF
INTERCONNECTION)





TO
SHEET 4

BFO-96
24 FIBER TRANSPORT
4 DWDM
20 VACANT
72 FTTB

J dks nH leC mmuul P in S stem
89
Gill 161

TO
SHEET 2



EXISTING FIBER OPTIC CABLE



PROPOSED FIBER OPTIC
CABLE



ANCHOR INSTITUTIONS



PROPOSED ELECTRONICS
HUT
(POINT OF
INTERCONNECTION)

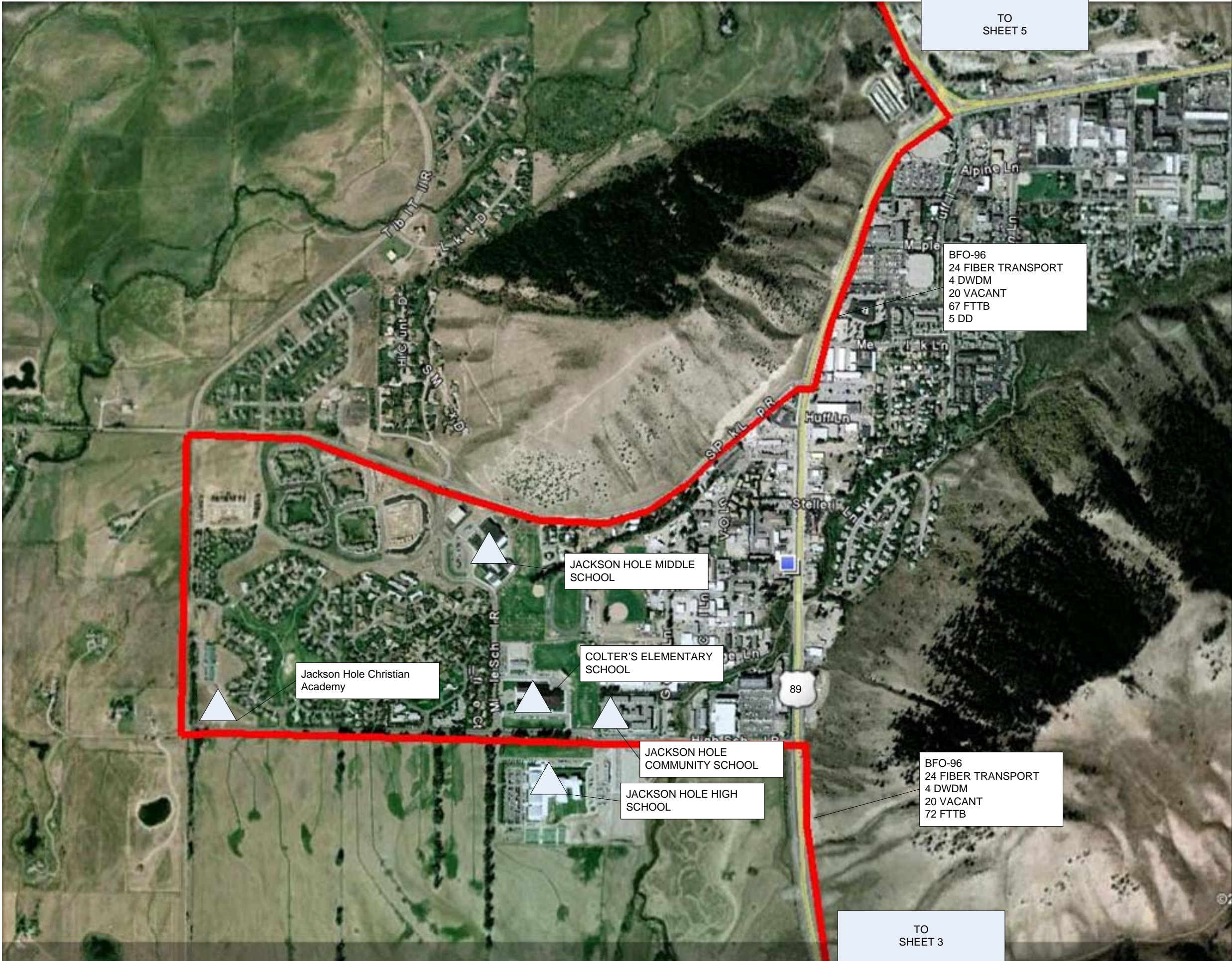


POINT OF INTERCONNECTION



PROPOSED ELECTRONICS
CABINET
(POINT OF
INTERCONNECTION)





EXISTING FIBER OPTIC CABLE



PROPOSED FIBER OPTIC CABLE



ANCHOR INSTITUTIONS



PROPOSED ELECTRONICS HUT
(POINT OF INTERCONNECTION)

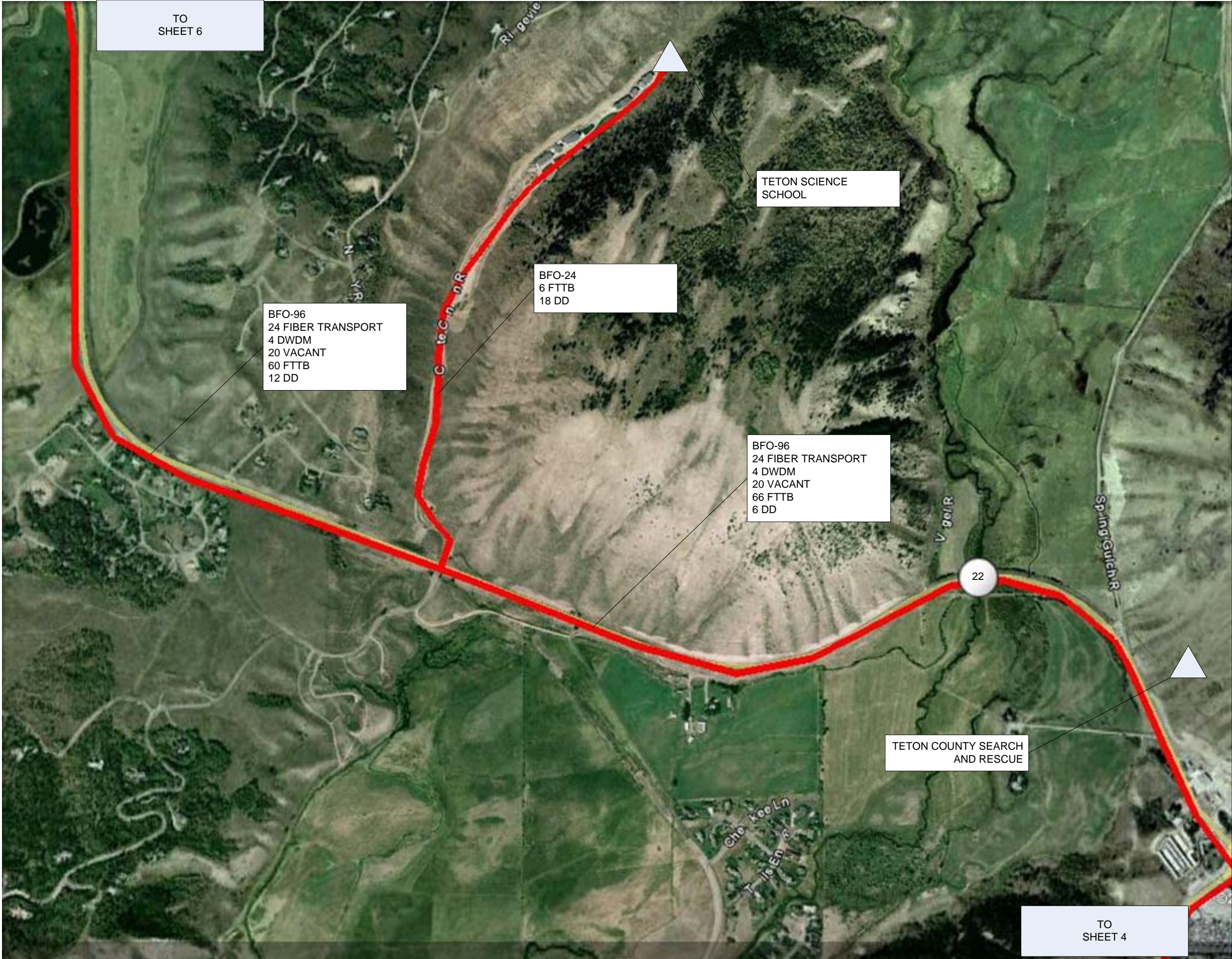


POINT OF INTERCONNECTION



PROPOSED ELECTRONICS CABINET
(POINT OF INTERCONNECTION)





TO
SHEET 6

BFO-96
24 FIBER TRANSPORT
4 DWDM
20 VACANT
60 FTTB
12 DD

BFO-24
6 FTTB
18 DD

TETON SCIENCE
SCHOOL

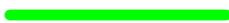
BFO-96
24 FIBER TRANSPORT
4 DWDM
20 VACANT
66 FTTB
6 DD

TETON COUNTY SEARCH
AND RESCUE

TO
SHEET 4



EXISTING FIBER OPTIC CABLE



PROPOSED FIBER OPTIC
CABLE



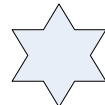
ANCHOR INSTITUTIONS



PROPOSED ELECTRONICS
HUT
(POINT OF
INTERCONNECTION)

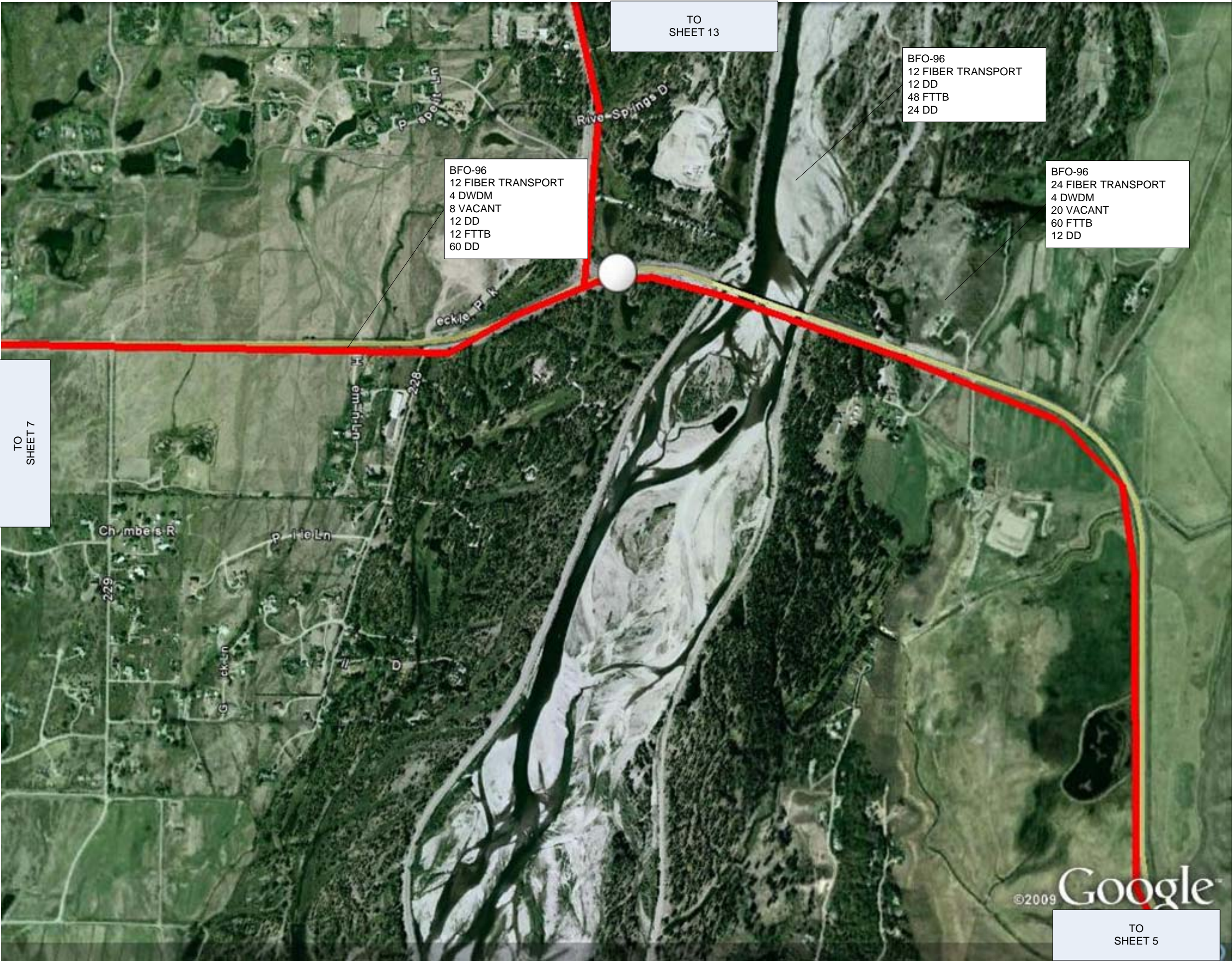


POINT OF INTERCONNECTION



PROPOSED ELECTRONICS
CABINET
(POINT OF
INTERCONNECTION)





EXISTING FIBER OPTIC CABLE



PROPOSED FIBER OPTIC CABLE



ANCHOR INSTITUTIONS



PROPOSED ELECTRONICS HUT
(POINT OF INTERCONNECTION)

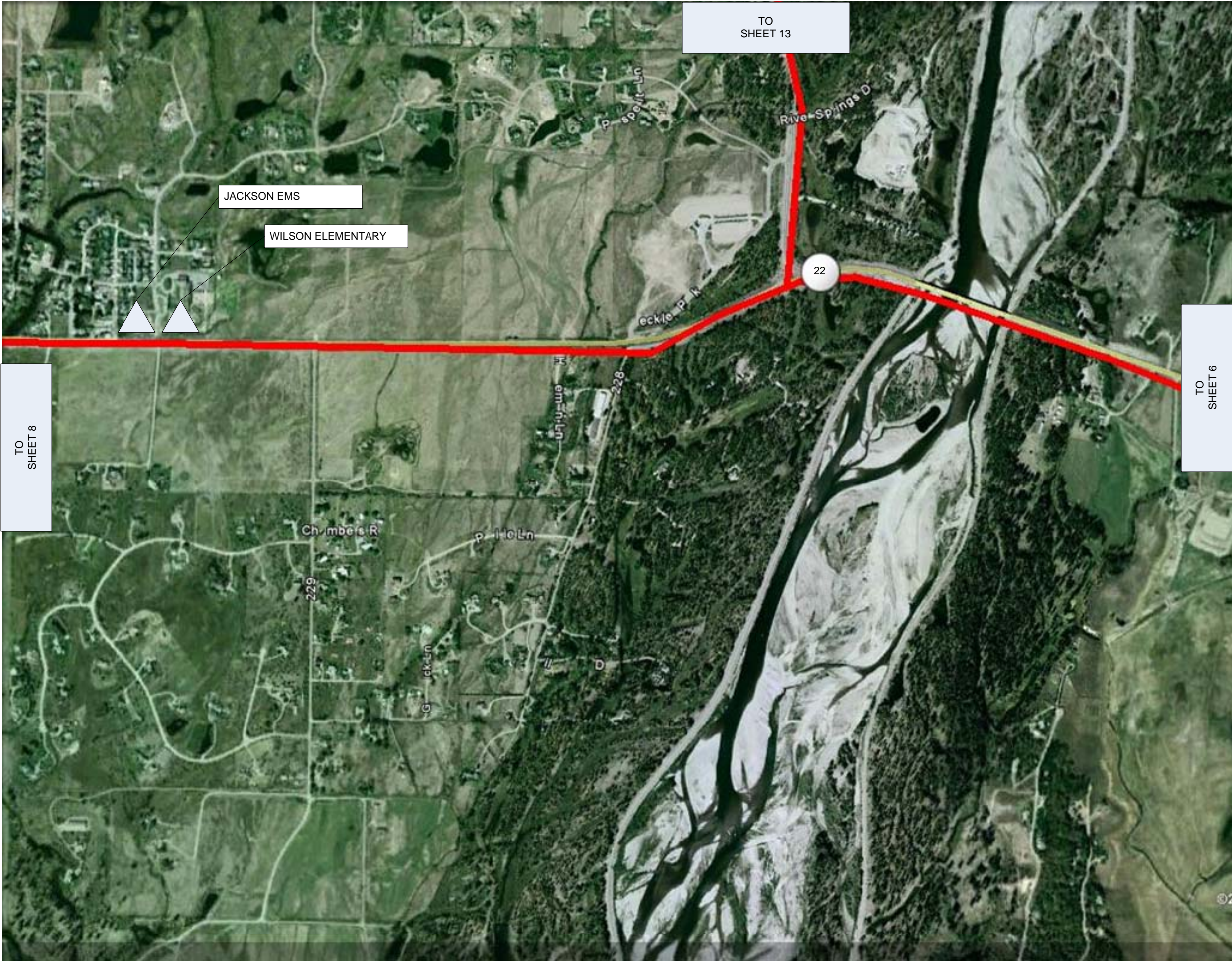




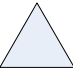

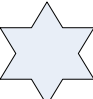

POINT OF INTERCONNECTION



PROPOSED ELECTRONICS CABINET
(POINT OF INTERCONNECTION)





- EXISTING FIBER OPTIC CABLE 
- PROPOSED FIBER OPTIC CABLE 
- ANCHOR INSTITUTIONS 
- PROPOSED ELECTRONICS HUT (POINT OF INTERCONNECTION) 
- POINT OF INTERCONNECTION 
- PROPOSED ELECTRONICS CABINET (POINT OF INTERCONNECTION) 



EXISTING FIBER OPTIC CABLE



PROPOSED FIBER OPTIC CABLE



ANCHOR INSTITUTIONS



PROPOSED ELECTRONICS HUT
(POINT OF INTERCONNECTION)

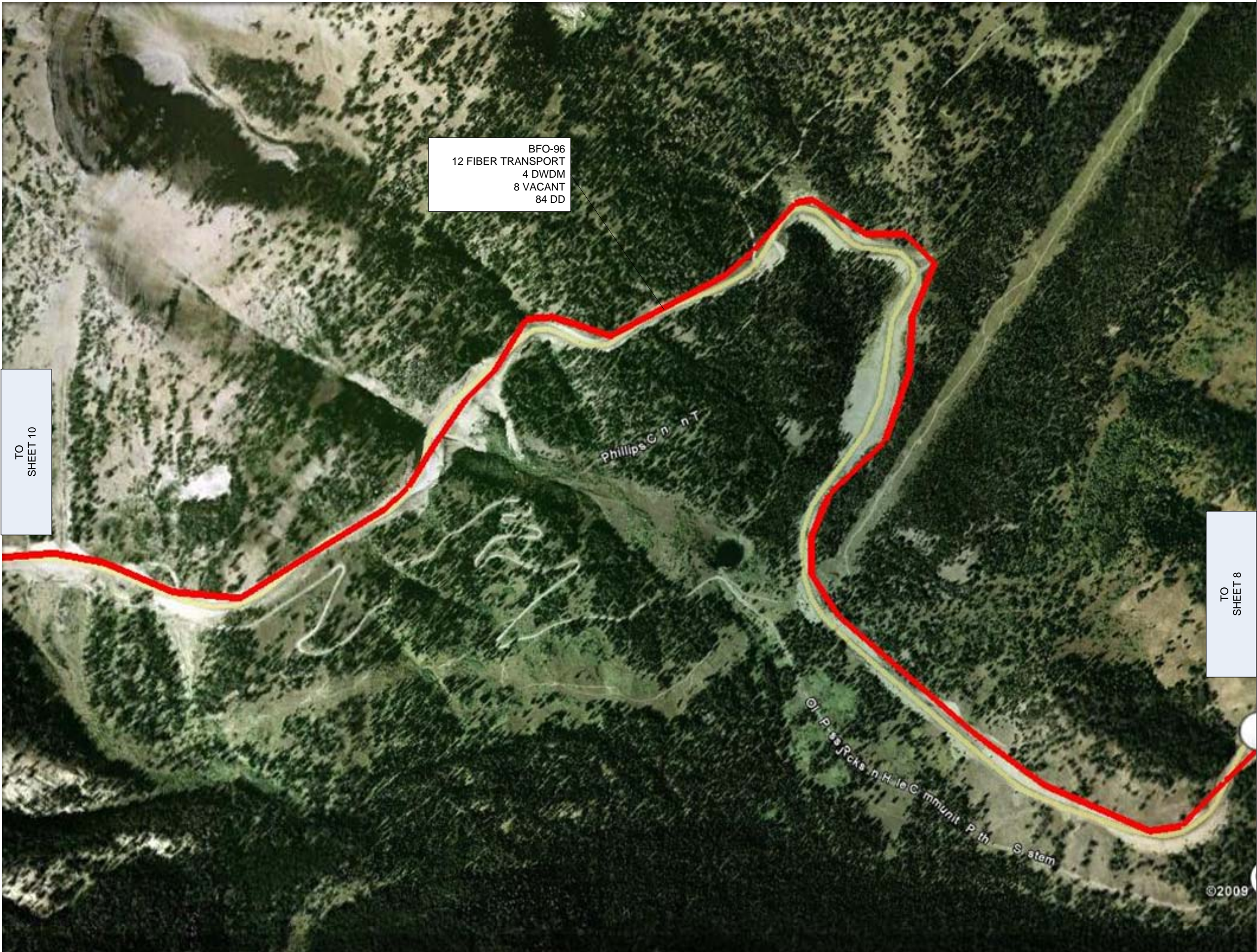




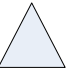



POINT OF INTERCONNECTION

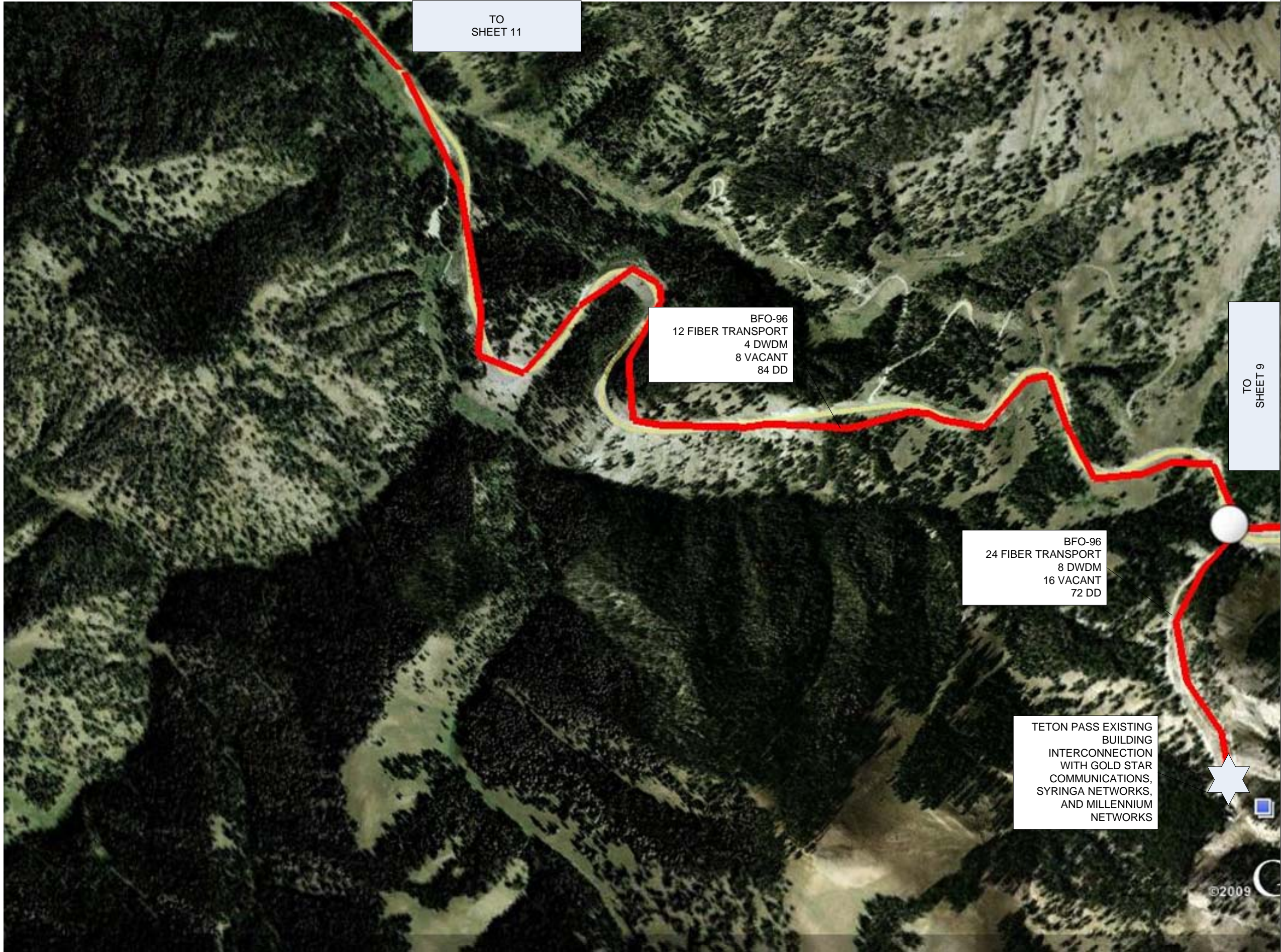








PROPOSED ELECTRONICS CABINET
(POINT OF INTERCONNECTION)





- EXISTING FIBER OPTIC CABLE 
- PROPOSED FIBER OPTIC CABLE 
- ANCHOR INSTITUTIONS 
- PROPOSED ELECTRONICS HUT (POINT OF INTERCONNECTION) 
- POINT OF INTERCONNECTION 
- PROPOSED ELECTRONICS CABINET (POINT OF INTERCONNECTION) 






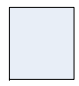


- | | |
|--|---|
| EXISTING FIBER OPTIC CABLE |  |
| PROPOSED FIBER OPTIC CABLE |  |
| ANCHOR INSTITUTIONS |  |
| PROPOSED ELECTRONICS HUT
(POINT OF INTERCONNECTION) |  |
| POINT OF INTERCONNECTION |  |
| PROPOSED ELECTRONICS CABINET
(POINT OF INTERCONNECTION) |  |

TO
SHEET 12

BFO-96
12 FIBER TRANSPORT
4 DWDM
8 VACANT
84 DD

TO
SHEET 10



- EXISTING FIBER OPTIC CABLE 
- PROPOSED FIBER OPTIC CABLE 
- ANCHOR INSTITUTIONS 
- PROPOSED ELECTRONICS HUT (POINT OF INTERCONNECTION) 
- POINT OF INTERCONNECTION 
- PROPOSED ELECTRONICS CABINET (POINT OF INTERCONNECTION) 

©2009



POINT OF
INTERCONNECTION
WITH COLUMBINE
TELEPHONE COMPANY
END OF PROJECT FOR
PHYSICAL FIBER
INSTALLATION.
PROJECT LEASES FROM
THIS INTERCONNECTION
TO THE VICTOR HUT.

BFO-96
12 FIBER TRANSPORT
4 DWDM
8 VACANT
84 DD

Hung Creek R.

TO
SHEET 11

©2009



EXISTING FIBER OPTIC
CABLE



PROPOSED FIBER OPTIC
CABLE



ANCHOR INSTITUTIONS



PROPOSED ELECTRONICS
HUT
(POINT OF
INTERCONNECTION)

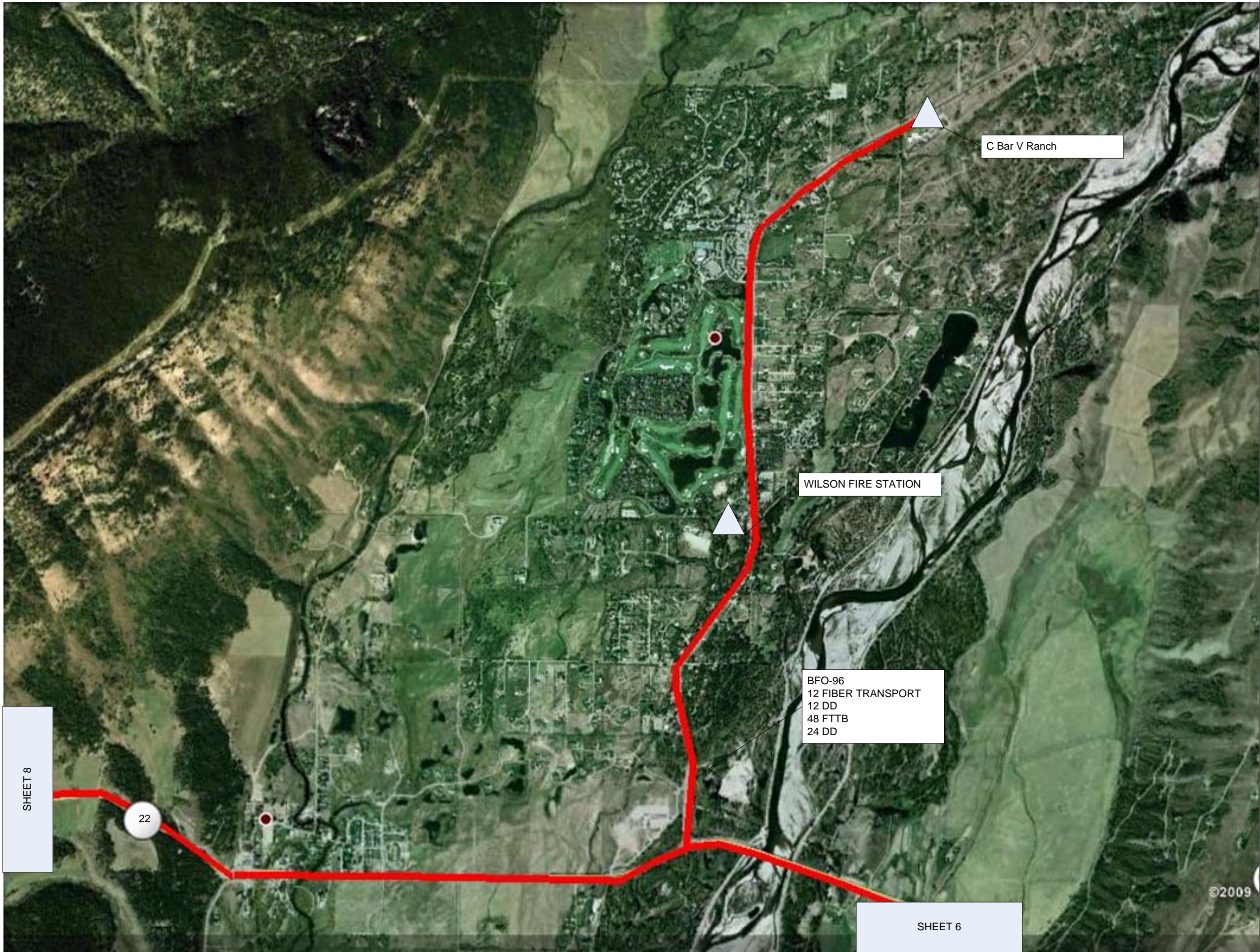




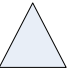


POINT OF
INTERCONNECTION



PROPOSED ELECTRONICS
CABINET
(POINT OF
INTERCONNECTION)





- EXISTING FIBER OPTIC CABLE 
- PROPOSED FIBER OPTIC CABLE 
- ANCHOR INSTITUTIONS 
- PROPOSED ELECTRONICS HUT (POINT OF INTERCONNECTION) 
- POINT OF INTERCONNECTION 
- PROPOSED ELECTRONICS CABINET (POINT OF INTERCONNECTION) 