



STATE OF GEORGIA
OFFICE OF THE GOVERNOR
ATLANTA 30334-0900

Sonny Perdue
GOVERNOR

March 9, 2010

Mr. Larry Strickland
Assistant Secretary
Department of Commerce
National Telecommunications and Information Administration
1401 Constitution Avenue
Suite 4898
Washington, DC 20230

Dear Mr. Strickland:

As Governor of Georgia, I am only too aware of the health needs of our citizens, especially those in rural and underserved areas. The Georgia Partnership for Telehealth has been a willing and able partner in working to remove disparities in access through the introduction of telemedicine. This grant would be a tremendous boost for Georgia, as we focus on improving the health status of our citizens. I heartily support the work of the Georgia Partnership for Telehealth (GPT) and its collaborating partners: the Georgia Public Web, the Georgia Department of Community Health, the National Center for Primary Care at Morehouse College, Strategic Healthcare Partners, Stat Doctors, the Georgia Association of Community Service Boards, the Georgia Primary Care Association, and HomeTown Health Rural Hospital Network. I have encouraged Georgia Partnership for Telehealth to work with our state agencies and the larger community to apply for the Broadband Technology Opportunities Program (BTOP) grant to fund the sustainable broadband adoption project entitled "TeleConnect GA for Better Health."

We are aware that because of poverty, poor health, and geography, there are many people who cannot access needed health services. We believe that the following goals for the grant implementation will address much of the identified need:

- enhance and improve the access to healthcare for those citizens experiencing declining health who reside in Georgia's 91 counties of persistent poverty;
- foster the implementation and use of telehealth and distance learning technologies to bridge the divide between urban centers and under-served rural communities;



- bring the key community public and private sector stakeholders together who are committed to bringing better health to rural Georgians and they will work together to achieve the goals and objectives of this grant; and
- develop a long-term, self-sustaining model of telehealth and distance learning to address the healthcare and educational needs of healthcare providers in rural Georgia.

Please accept this letter as my strong show of support for this initiative. Not only do we have a great team working on this project, but they are highly motivated by the great need of our citizens. Together, we can make a difference to improve health care for all Georgians. Thanks for your consideration.

Sincerely,

A handwritten signature in cursive script that reads "Sonny Perdue".

Sonny Perdue, Governor

United States Senate
WASHINGTON, DC 20510

October 8, 2009

The Honorable Lawrence E. Strickling
Assistant Secretary for Communications and Information
National Telecommunications and Information Administration
United States Department of Commerce
1401 Constitution Avenue, N.W.
Washington, DC 20230

The Honorable Jonathan Adelstein
Administrator
Rural Utilities Service
United States Department of Agriculture
1400 Independence Avenue, S.W.
Washington, DC 20520

Dear Mr. Strickling and Mr. Adelstein:

We are writing in support of any applications you may receive for funding under the Broadband Technology Opportunities Program (BTOP) at the U.S. Department of Commerce and the Broadband Initiatives Program (BIP) administered by the U.S. Department of Agriculture. While some Georgia communities have made great strides in providing quality internet access to their citizens, many areas, both urban and rural, are in dire need of the most basic connections to serve their homes, businesses, schools, and health care facilities.

Dozens of our constituents have submitted proposals to you that will generate a multitude of new and sustainable technology jobs, provide low-to-moderate income families with improved access to low-cost broadband services, and increase educational opportunities across the Southeast region. We are confident that Georgia is uniquely positioned to maximize the use of any financial assistance that your department is willing to provide through the BTOP and BIP awards.

We request that you give all projects competing for the BTOP and BIP programs that will bring jobs to Georgia your full consideration in accordance with your policies and procedures. We would also appreciate your department keeping us informed of any awards made under this initiative. If you have any questions about our support for these projects, please do not hesitate to contact Angelique Roberts or Camila Knowles of Senator Chambliss' staff or Andrew Billing or Katy McEver of Senator Isakson's staff.

Thank you in advance for your consideration. Please do not hesitate to let us know if we may ever be of assistance to you.

Sincerely,


Saxby Chambliss


Johnny Isakson

COMMITTEE ON ARMED SERVICES
TERRORISM, UNCONVENTIONAL
THREATS AND CAPABILITIES
AIR AND LAND FORCES
READINESS



504 CANNON HOUSE OFFICE BUILDING
WASHINGTON, DC 20515
(202) 225-6531
FAX: (202) 225-3013
jim.marshall@mail.house.gov

COMMITTEE ON AGRICULTURE
GENERAL FARM COMMODITIES
AND RISK MANAGEMENT
SPECIALTY CROPS AND
FOREIGN AGRICULTURE PROGRAMS

Congress of the United States
House of Representatives

JIM MARSHALL
8TH DISTRICT, GEORGIA

682 CHERRY STREET, SUITE 300
MACON, GA 31201
(478) 464-0255
FAX: (478) 464-0277
TOLL FREE: 1-877-464-0255

503 BELLEVUE AVENUE, SUITE C
DUBLIN, GA 31021
(478) 296-2023
FAX: (478) 296-2802

TIFTON, GA (229) 556-7418

COVINGTON, GA (678) 625-8221

CO-CHAIR

AIR FORCE CAUCUS
FINANCIAL MARKETS CAUCUS

March 10, 2010

The Honorable Larry Strickland
Assistant Secretary
Department of Commerce
National Telecommunications and Information Administration
1401 Constitution Avenue, Suite 4898
Washington, D.C. 20230-0002

Dear Honorable Strickland:

This letter is to express my support for the Georgia Partnership for Telehealth's (GPT) grant application from the Broadband Technology Opportunity Program (BTOP) Grant to fund the sustainable broadband adoption project entitled "TeleConnect GA for Better Health."

The strength and success of this BTOP SBA initiative will result from not only the telehealth expertise provided by GPT but the expertise of those partnering with this project which include but are not limited to the Georgia Public Web, the Georgia Department of Community Health, and the National Center for Primary Care at Morehouse College.

I understand that "TeleConnect GA for Better Health" will address the declining health of the citizens of Georgia's 91 counties of persistent poverty through the use of telemedicine, internet technology and broadband adoption. I whole heartedly support this initiative designed to improve better health outcomes for our underserved citizens through improved access to care.

Thank you for your time and consideration. Should you have any questions, please do not hesitate to contact me.

Very truly yours,

A handwritten signature in black ink that reads "Jim Marshall". The signature is written in a cursive style with a large, sweeping initial "J".



OFFICE OF LIEUTENANT GOVERNOR

240 STATE CAPITOL

ATLANTA, GEORGIA 30334

CASEY CAGLE
LIEUTENANT GOVERNOR

March 10, 2010

Mr. Larry Strickland
Assistant Secretary
Department of Commerce
National Telecommunications and Information Administration
1401 Constitution Avenue
Suite 4898
Washington, DC 20230

Dear Mr. Strickland:

I would like to express my support for the Georgia Partnership for Telehealth's (GPT) grant application for the Broadband Technology Opportunities Program (BTOP) grant to fund the sustainable broadband adoption project entitled "TeleConnect GA for Better Health."

This BTOP SBA initiative will be successful and effective not only because of the telehealth expertise provided by GPT but also because of the expertise of those partnering with this project: Georgia Public Web, the Georgia Department of Community Health, the National Center for Primary Care at Morehouse College, Strategic Healthcare Partners, Stat Doctors, the Georgia Association of Community Service Boards, the Georgia Primary Care Association and HomeTown Health Rural Hospital Network.

"TeleConnect GA for Better Health" will use telemedicine, internet technology and broadband adoption to improve the health of the citizens in many of Georgia's most underserved counties. Accordingly, I wholeheartedly support this initiative designed to provide better health outcomes for our underserved citizens through improved access to care.

Thank you for your time and consideration. Should you have any questions, please do not hesitate to contact me.

Sincerely,

Casey Cagle
Lt. Governor of Georgia

CC/jy

March 8, 2010

Mr. Larry Strickland
Assistant Secretary
Department of Commerce
National Telecommunications and Information Administration
1401 Constitution Avenue
Suite 4898
Washington, DC 20230

Dear Mr. Strickland,

The Georgia Department of Community Health, State Office of Rural Health and Primary Care Office are pleased to offer support to the Georgia Partnership for Telehealth (GPT), Inc., and its collaborating partners: the Georgia Public Web, the Georgia Department of Community Health, the National Center for Primary Care at Morehouse College, Strategic Healthcare Partners, Stat Doctors, the Georgia Association of Community Service Boards, the Georgia Primary Care Association and HomeTown Health Rural Hospital Network in your application for Broadband Technology Opportunities Program (BTOP) grant to fund the sustainable broadband adoption project entitled "TeleConnect GA for Better Health."

The GPT has consistently fostered successful partnerships and community relationships to develop, maintain and expand a viable and sustainable Telehealth and Distance Learning program for the state of Georgia. We are pleased to see that your successful efforts have encouraged you to improve and enhance the use of telehealth and distance learning technologies through internet technology and broadband adoption.

It is our mission to help improve access to health services and assist with developing rural health systems in underserved areas of Georgia. We realize this initiative will be a vital instrument to bridge the divide between urban centers and under-served rural communities as we work in pursuit of improved health status and quality of life for the vulnerable populations of Georgia.

The Georgia Department of Community Health, State Office of Rural Health and Primary Care Office are pleased that the GPT is willing to take a leadership role in continuing to develop a collaborative model for HIT infrastructure development in the state of Georgia. We strongly support your efforts to obtain funding for this project as you continue your endeavor to reduce health care barriers.

Sincerely,



Charles F. Owens
Executive Director

CFO:sm

John D. Archbold Memorial Hospital

Gordon Avenue at Mimosa Drive • P.O. Box 1018 • Thomasville, Georgia 31799-1018

March 10th, 2010

Mr. Larry Strickland
Assistant Secretary
Department of Commerce
National Telecommunications and Information Administration
1401 Constitution Avenue, Suite 4898
Washington, DC 20230

Dear Mr. Strickland:

This letter is to express my support for the Georgia Partnership for Telehealth's (GPT) grant application to the Broadband Technology Opportunities Program (BTOP) grant to fund the sustainable broadband adoption project entitled, "TeleConnect GA for Better Health."

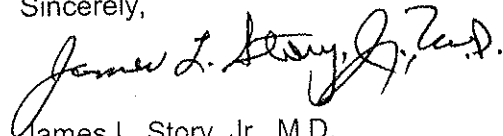
The strength and success of this BTOP SBA initiative will result from not only the telehealth expertise provided by GPT but the expertise of those partnering with this project: Georgia Public Web, the Georgia Department of Community Health, the National Center for Primary Care at Morehouse College, Strategic Healthcare Partners, Stat Doctors, the Georgia Association of Community Service Boards, the Georgia Primary Care Association and HomeTown Health Rural Hospital Network.

I understand that "TeleConnect GA for Better Health" will address the declining health of the citizens of Georgia's 91 counties of persistent poverty through the use of telemedicine, internet technology and broadband adoption. I wholeheartedly support this initiative designed to improve better health outcomes for our underserved citizens through improved access to care.

As a physician, President Emeritus of John D. Archbold Memorial Hospital, a member of the Board of Trustees of Thomas University, a member of the Dean's Advisory Council of the Florida State University School of Medicine and as current Chairman of the Board of the Georgia Partnership for Telehealth, I see this as a great opportunity to take advantage of the Georgia Partnership for Telehealth's track record and leadership in successfully improving the quality and value of health care in Georgia by electronic means.

Should you have any questions, please do not hesitate to contact me at 229-228-2922. Thank you for your consideration.

Sincerely,



James L. Story, Jr., M.D.
President Emeritus

/dmh



Paula Raley
Superintendent

Berrien County Schools
"Providing opportunities today for excellence tomorrow"

810 S. Dogwood Drive; P.O. Box 625
Nashville, Georgia 31639
Phone 229-686-2081
229-686-9002 (Fax)

March 12, 2010

To: Mr. Larry Strickland
Assistant Secretary
Department of Commerce
National Telecommunications and Information Administration
1401 Constitution Avenue
Suite 4898
Washington, DC 20230

From:
Paula Raley, Superintendent
810 South Dogwood
Nashville, Ga. 31639

Dear Larry Strickland,

On behalf of Berrien County Board of Education, I am pleased to support the ongoing innovative efforts of the Georgia Partnership for Telehealth (GPT) and its collaborating partners: the Georgia Public Web, the Georgia Department of Community Health, the National Center for Primary Care at Morehouse College, Strategic Healthcare Partners, Stat Doctors, the Georgia Association of Community Service Boards, the Georgia Primary Care Association and HomeTown Health Rural Hospital Network, to apply for a grant from the Broadband Technology Opportunity Program (BTOP) Grant.

We know that many of the citizens of Georgia are in poor health and unable to access needed healthcare. We also realize that this initiative would profoundly impact citizens and communities across the entire state. "TeleConnect GA for Better Health" will:

- enhance and improve the access to healthcare for those citizens experiencing declining health who reside in Georgia's 91 counties of persistent poverty;
- foster the implementation and use of telehealth and distance learning technologies to bridge the divide between urban centers and under-served rural communities;
- bring the key community public and private sector stakeholders together who are committed to bringing better health to rural Georgians and they will work together to achieve the goals and objectives of this grant; and
- develop a long-term, self-sustaining model of telehealth and distance learning to address the healthcare and educational needs of healthcare providers in rural Georgia.

As an organization dedicated to improving the access to quality healthcare and education in our rural community, Berrien County Board of Education clearly understands, values, and supports any initiative designed to address the declining health of many of the citizens of our state. Please accept our organization's endorsement of this innovative and collaborative project.

Sincerely,


Superintendent



Calhoun Memorial Hospital - Calhoun Nursing Home – Willowood
Calhoun Rehabilitation Services – Robert E. Jennings Medical Clinic

55 R.E. Jennings Ave. SE PO Box 496 Arlington, GA 39813

March 10, 2010

Mr. Larry Strickland
Assistant Secretary
Department of Commerce
National Telecommunications and Information Administration
1401 Constitution Avenue
Suite 4898
Washington, DC 20230

Dear Mr. Strickland:

On behalf of the Hospital Authority of Calhoun County, I am pleased to support the ongoing innovative efforts of the Georgia Partnership for Telehealth (GPT) and its collaborating partners: the Georgia Public Web, the Georgia Department of Community Health, the National Center for Primary Care at Morehouse College, Strategic Healthcare Partners, Stat Doctors, the Georgia Association of Community Service Boards, the Georgia Primary Care Association and HomeTown Health Rural Hospital Network, to apply for a grant from the Broadband Technology Opportunities Program.

We know that many of the citizens of Georgia are in poor health and unable to access needed healthcare. We also realize that this initiative would profoundly impact citizens and communities across the entire state. "TeleConnect GA for Better Health" will:

- enhance and improve the access to healthcare for those citizens experiencing declining health who reside in Georgia's 91 counties of persistent poverty;
- foster the implementation and use of telehealth and distance learning technologies to bridge the divide between urban centers and under-served rural communities;
- bring the key community public and private sector stakeholders together who are committed to bringing better health to rural Georgians and they will work together to achieve the goals and objectives of this grant; and

- develop a long-term, self-sustaining model of telehealth and distance learning to address the healthcare and educational needs of healthcare providers in rural Georgia.

As an organization dedicated to improving the access to quality healthcare and education in our rural community, the Hospital Authority of Calhoun County clearly understands, values, and supports any initiative designed to address the declining health of many of the citizens of our state. Please accept our organization's endorsement of this innovative and collaborative project.

Sincerely,

A handwritten signature in cursive script that reads "Earl S. Whiteley".

Earl S. Whiteley, FACHE
Chief Executive Officer
Calhoun Memorial Hospital
229-725-2131
229-725-2199 fax
earl.whiteley@hacc-ga.com
earlwhiteley@yahoo.com



CHESTATEE
REGIONAL HOSPITAL

March 10, 2010

Mr. Larry Strickland
Assistant Secretary
Department of Commerce
National Telecommunications and Information Administration
1401 Constitution Avenue, Suite 4898
Washington, DC 20230

Dear Mr. Strickland:

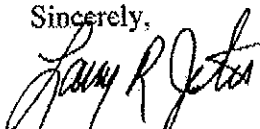
On behalf of Chestatee Regional Hospital, I am pleased to support the ongoing innovative efforts of the Georgia Partnership for Telehealth (GPT) and its collaborating partners: the Georgia Public Web, the Georgia Department of Community Health, the National Center for Primary Care at Morehouse College, Strategic Healthcare Partners, Stat Doctors, the Georgia Association of Community Service Boards, the Georgia Primary Care Association and HomeTown Health Rural Hospital Network, to apply for a grant from the Broadband Technology Opportunities Program.

We know that many of the citizens of Georgia are in poor health and unable to access needed healthcare. We also realize that this initiative would profoundly impact citizens and communities across the entire state. "TeleConnect GA for Better Health" will:

- enhance and improve the access to healthcare for those citizens experiencing declining health who reside in Georgia's 91 counties of persistent poverty;
- foster the implementation and use of telehealth and distance learning technologies to bridge the divide between urban centers and under-served rural communities;
- bring the key community public and private sector stakeholders together who are committed to bringing better health to rural Georgians and they will work together to achieve the goals and objectives of this grant; and
- develop a long-term, self-sustaining model of telehealth and distance learning to address the healthcare and educational needs of healthcare providers in rural Georgia.

As an organization dedicated to improving the access to quality healthcare and education in our rural community, Chestatee Regional Hospital clearly understands, values, and supports any initiative designed to address the declining health of many of the citizens of our state. Please accept our organization's endorsement of this innovative and collaborative project.

Sincerely,



Larry R. Jeter, CEO



Mayor

Jackie L. Wilson

Mayor Pro Tem

Ronnie Anderson

Commissioners

Dennis Josey

Bob Moore

Olivia Pearson

Johnnie Lee Roper, Sr.

Marty Swain

City Manager

Terrell Jacobs

P.O. Box 470
Douglas, GA 31534
(912) 389-3401
Fax: (912) 384-6730



March 12, 2010

Mr. Larry Strickland
Assistant Secretary
Dept. of Commerce
National Telecommunications
And Information Administration
1401 Constitution Avenue
Suite 4898
Washington, D C 20230

Dear Mr. Strickland:

On behalf of the City of Douglas, I am pleased to support the ongoing innovative efforts of the Georgia Partnership for Telehealth (GPT) and its collaborating partners: the Georgia Public Web, the Georgia Department of Community Health, the National Center for Primary Care at Morehouse College, Strategic Healthcare Partners, Stat Doctors, the Georgia Association of Community Service Boards, the Georgia Primary Care Association and HomeTown Health Rural Hospital Network, to apply for a grant from the Broadband Technology Opportunity Program (BTOP) Grant.

We know that many of the citizens of Georgia are in poor health and unable to access needed healthcare. We also realize that this initiative would profoundly impact citizens and communities across the entire state. "TeleConnect GA for Better Health" will:

- enhance and improve the access to healthcare for those citizens experiencing declining health who reside in Georgia's 91 counties of persistent poverty;
- foster the implementation and use of telehealth and distance learning technologies to bridge the divide between urban centers and under-served rural communities;
- bring the key community public and private sector stakeholders together who are committed to bringing better health to rural Georgians and they will work together to achieve the goals and objectives of this grant; and
- develop a long-term, self-sustaining model of telehealth and distance learning to address the healthcare and educational needs of healthcare providers in rural Georgia.

As an organization dedicated to improving the access to quality healthcare and education in our rural community, the City of Douglas clearly understands, values, and supports any initiative designed to address the declining health of many of the citizens of our state. Please accept our organization's endorsement of this innovative and collaborative project.

Sincerely,

THE CITY OF DOUGLAS

Jackie L. Wilson
Jackie Wilson
Mayor

CITY OF WAYCROSS, GEORGIA

Office of the Mayor and Commission



Clarence E. Billups
Mayor

Norman E. Davis, Sr.
Commissioner/District 1

William D. Simmons
Commissioner/District 2

Marlan Solomon-Gaines
Commissioner/District 3

Diane L. Hopkins
Commissioner/District 4

Daniel J. Yarbrough
Commissioner/District 5

March 10, 2010

Mr. Larry Strickland, Assistant Secretary
Department of Commerce
National Telecommunications and Information Administration
1401 Constitution Avenue
Suite 4898
Washington, DC 20230

Dear Mr. Strickland:

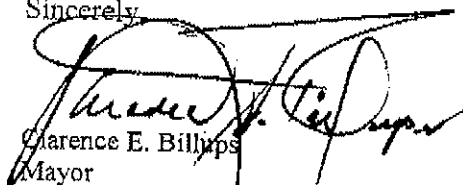
This letter is to express my support for the Georgia Partnership for Telehealth's (GPT) grant application from the United States Department of Agriculture (USDA) Rural Utilities Services to fund the sustainable broadband adoption project entitled "TeleConnect GA for Better Health."

The strength and success of this BTOP SBA initiative will result from not only the telehealth expertise provided by GPT but the expertise of those partnering with this project: Georgia Public Web, the Georgia Department of Community Health, the National Center for Primary Care at Morehouse College, Strategic Healthcare Partners, Stat Doctors, the Georgia Association of Community Service Boards, the Georgia Primary Care Association and HomeTown Health Rural Hospital Network.

We understand that "TeleConnect GA for Better Health" will address the declining health of the citizens of Georgia's 91 counties of persistent poverty through the use of telemedicine, internet technology and broadband adoption. We whole heartedly support this initiative designed to improve better health outcomes for our underserved citizens through improved access to care.

Thank you for your time and consideration. Should you have any questions, please do not hesitate to contact me.

Sincerely,


Clarence E. Billups
Mayor

P.O. DRAWER 99, 417 PENDLETON STREET • WAYCROSS, GEORGIA 31502-0099 • (912) 287-2912

www.waycrossga.com

E.O.E.

March 9, 2010

Mr. Larry Strickland
Assistant Secretary
Department of Commerce
National Telecommunications and Information Administration
1401 Constitution Avenue
Suite 4898
Washington, DC 20230



Dear Mr. Strickland:


On behalf of Dodge County Hospital, I am pleased to support the ongoing innovative efforts of the Georgia Partnership for Telehealth (GPT) and its collaborating partners: the Georgia Public Web, the Georgia Department of Community Health, the National Center for Primary Care at Morehouse College, Strategic Healthcare Partners, Stat Doctors, the Georgia Association of Community Service Boards, the Georgia Primary Care Association and HomeTown Health Rural Hospital Network, to apply for a grant from the Broadband Technology Opportunities Program.

We know that many of the citizens of Georgia are in poor health and unable to access needed healthcare. We also realize that this initiative would profoundly impact citizens and communities across the entire state. "TeleConnect GA for Better Health" will:

- enhance and improve the access to healthcare for those citizens experiencing declining health who reside in Georgia's 91 counties of persistent poverty;
- foster the implementation and use of telehealth and distance learning technologies to bridge the divide between urban centers and under-served rural communities;
- bring the key community public and private sector stakeholders together who are committed to bringing better health to rural Georgians and they will work together to achieve the goals and objectives of this grant; and
- develop a long-term, self-sustaining model of telehealth and distance learning to address the healthcare and educational needs of healthcare providers in rural Georgia.

As an organization dedicated to improving the access to quality healthcare and education in our rural community, Dodge County Hospital clearly understands, values, and supports any initiative designed to address the declining health of many of the citizens of our state. Please accept our organization's endorsement of this innovative and collaborative project.

Sincerely,


Kevin L. Bierschenk
President/CEO

Early Memorial Hospital

Early Memorial Nursing Home

11740 Columbia Street – Blakely, Georgia 39823

Phone (229) 723-4241

March 9, 2010

Mr. Larry Strickland
Assistant Secretary
Department of Commerce
National Telecommunications and Information Administration
1401 Constitution Avenue, Suite 4898
Washington, DC 20230

Dear Mr. Strickland:

On behalf of Early Memorial Hospital, I am pleased to support the ongoing innovative efforts of the Georgia Partnership for Telehealth (GPT) and its collaborating partners: the Georgia Public Web, the Georgia Department of Community Health, the National Center for Primary Care at Morehouse College, Strategic Healthcare Partners, Stat Doctors, the Georgia Association of Community Service Boards, the Georgia Primary Care Association and HomeTown Health Rural Hospital Network, to apply for a grant from the Broadband Technology Opportunities Program.

We know that many of the citizens of Georgia are in poor health and unable to access needed healthcare. We also realize that this initiative would profoundly impact citizens and communities across the entire state. "TeleConnect GA for Better Health" will:

- enhance and improve the access to healthcare for those citizens experiencing declining health who reside in Georgia's 91 counties of persistent poverty;
- foster the implementation and use of telehealth and distance learning technologies to bridge the divide between urban centers and under-served rural communities;
- bring the key community public and private sector stakeholders together who are committed to bringing better health to rural Georgians and they will work together to achieve the goals and objectives of this grant; and
- develop a long-term, self-sustaining model of telehealth and distance learning to address the healthcare and educational needs of healthcare providers in rural Georgia.

As an organization dedicated to improving the access to quality healthcare and education in our rural community, Early Memorial Hospital clearly understands, values, and supports any initiative designed to address the declining health of many of the citizens of our state. Please accept our organization's endorsement of this innovative and collaborative project.

Sincerely,



Jon L. Dixon, FACHE
Administrator

Affiliated with John D. Archbold Memorial Hospital



Evans Memorial Hospital, Inc.

March 9, 2010

To:

Dear _____

On behalf of Evans Memorial Hospital, I am pleased to support the ongoing innovative efforts of the Georgia Partnership for Telehealth (GPT) and its collaborating partners: the Georgia Public Web, the Georgia Department of Community Health, the National Center for Primary Care at Morehouse College, Strategic Healthcare Partners, Stat Doctors, the Georgia Association of Community Service Boards, the Georgia Primary Care Association and HomeTown Health Rural Hospital Network, to apply for a grant from the Broadband Technology Opportunities Program.

We know that many of the citizens of Georgia are in poor health and unable to access needed healthcare. We also realize that this initiative would profoundly impact citizens and communities across the entire state. "TeleConnect GA for Better Health" will:

- enhance and improve the access to healthcare for those citizens experiencing declining health who reside in Georgia's 91 counties of persistent poverty;
- foster the implementation and use of telehealth and distance learning technologies to bridge the divide between urban centers and under-served rural communities;
- bring the key community public and private sector stakeholders together who are committed to bringing better health to rural Georgians and they will work together to achieve the goals and objectives of this grant; and
- develop a long-term, self-sustaining model of telehealth and distance learning to address the healthcare and educational needs of healthcare providers in rural Georgia.

As an organization dedicated to improving the access to quality healthcare and education in our rural community, Evans Memorial clearly understands, values, and supports any initiative designed to address the declining health of many of the citizens of our state. Please accept our organization's endorsement of this innovative and collaborative project.

Sincerely,

Martha F. Tatum

Martha F. Tatum
Chief Executive Officer



COFFEE REGIONAL
MEDICAL CENTER

March 10, 2010

Mr. Larry Strickland
Assistant Secretary
Department of Commerce
National Telecommunications and Information Administration
1401 Constitution Avenue, Suite 4898
Washington, DC 20230

Dear Mr. Strickland:

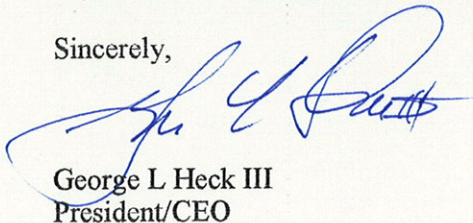
On behalf of Coffee Regional Medical Center, I am pleased to support the ongoing innovative efforts of the Georgia Partnership for Telehealth (GPT) and its collaborating partners: the Georgia Public Web, the Georgia Department of Community Health, the National Center for Primary Care at Morehouse College, Strategic Healthcare Partners, Stat Doctors, the Georgia Association of Community Service Boards, the Georgia Primary Care Association and HomeTown Health Rural Hospital Network, to apply for a grant from Broadband Technology Opportunities Program (BTOP) grant to fund the sustainable broadband adoption project entitled "TeleConnect GA for Better Health."

We know that many of the citizens of Georgia are in poor health and unable to access needed healthcare. We also realize that this initiative would profoundly impact citizens and communities across the entire state. "TeleConnect GA for Better Health" will:

- enhance and improve the access to healthcare for those citizens experiencing declining health who reside in Georgia's 91 counties of persistent poverty;
- foster the implementation and use of telehealth and distance learning technologies to bridge the divide between urban centers and under-served rural communities;
- bring the key community public and private sector stakeholders together who are committed to bringing better health to rural Georgians and they will work together to achieve the goals and objectives of this grant; and
- develop a long-term, self-sustaining model of telehealth and distance learning to address the healthcare and educational needs of healthcare providers in rural Georgia.

As an organization dedicated to improving the access to quality healthcare and education in our rural community, Coffee Regional Medical Center clearly understands, values, and supports any initiative designed to address the declining health of many of the citizens of our state. Please accept our organization's endorsement of this innovative and collaborative project.

Sincerely,



George L Heck III
President/CEO



March 9, 2010

Mr. Larry Strickland
Assistant Secretary
Department of Commerce
National Telecommunications and Information Administration
1401 Constitution Avenue
Suite 4898
Washington, DC 20230

Dear Mr. Strickland:

On behalf of Liberty Regional Medical Center, I am pleased to support the ongoing innovative efforts of the Georgia Partnership for Telehealth (GPT) and its collaborating partners: the Georgia Public Web, the Georgia Department of Community Health, the National Center for Primary Care at Morehouse College, Strategic Healthcare Partners, Stat Doctors, the Georgia Association of Community Service Boards, the Georgia Primary Care Association and HomeTown Health Rural Hospital Network, to apply for a grant from the Broadband Technology Opportunities Program.

We know that many of the citizens of Georgia are in poor health and unable to access needed healthcare. We also realize that this initiative would profoundly impact citizens and communities across the entire state. "TeleConnect GA for Better Health" will:

- enhance and improve the access to healthcare for those citizens experiencing declining health who reside in Georgia's 91 counties of persistent poverty;
- foster the implementation and use of telehealth and distance learning technologies to bridge the divide between urban centers and under-served rural communities;
- bring the key community public and private sector stakeholders together who are committed to bringing better health to rural Georgians and they will work together to achieve the goals and objectives of this grant; and
- develop a long-term, self-sustaining model of telehealth and distance learning to address the healthcare and educational needs of healthcare providers in rural Georgia.

As an organization dedicated to improving the access to quality healthcare and education in our rural community, Liberty Regional Medical Center clearly understands, values, and supports any initiative designed to address the declining health of many of the citizens of our state. Please accept our organization's endorsement of this innovative and collaborative project.

Sincerely,



Scott Kroell
Chief Executive Officer



East Central

TECHNICAL COLLEGE

Mrs. Lisa G. Tomberlin
Interim President
Ben Hill-Irwin Campus
667 Perry House Road
Fitzgerald, GA 31750
229-468-2000
Fax: 229-468-2110

Building futures, one student at a time.

March 11, 2010

Mr. Larry Strickland
Assistant Secretary
Department of Commerce
National Telecommunications and Information Administration
1401 Constitution Avenue
Suite 4898
Washington, DC 20230

Dear Mr. Strickland:

This letter is to express my support for the Georgia Partnership for Telehealth's (GPT) grant application from the United States Department of Agriculture (USDA) Rural Utilities Services to fund the sustainable broadband adoption project entitled "TeleConnect GA for Better Health."

The strength and success of this BTOP SBA initiative will result from not only the telehealth expertise provided by GPT but the expertise of those partnering with this project: Georgia Public Web, the Georgia Department of Community Health, the National Center for Primary Care at Morehouse College, Strategic Healthcare Partners, Stat Doctors, the Georgia Association of Community Service Boards, the Georgia Primary Care Association and HomeTown Health Rural Hospital Network.

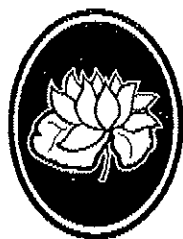
We understand that "TeleConnect GA for Better Health" will address the declining health of the citizens of Georgia's 91 counties of persistent poverty through the use of telemedicine, internet technology and broadband adoption. We whole heartedly support this initiative designed to improve better health outcomes for our underserved citizens through improved access to care.

Thank you for your time and consideration. Should you have any questions, please do not hesitate to contact me.

Sincerely,

Lisa G. Tomberlin

Lisa G. Tomberlin
Interim President



OKEFENOKEE TECHNICAL COLLEGE

OFFICE OF THE PRESIDENT • DR. GAIL THAXTON

gthaxton@okefenokeetech.edu

March 11, 2010

Mr. Larry Strickland, Assistant Secretary
Department of Commerce
National Telecommunications and Information Administration
1401 Constitution Avenue, Suite 4898
Washington, DC 20230

Dear Mr. Strickland

I am pleased to offer this letter of support for the Georgia Partnership for Telehealth's (GPT) grant application from the United States Department of Agriculture (USDA) Rural Utilities Services. Funds will be used to make a broadband adoption project, "TeleConnect GA for Better Health," a reality.

The BTOP SBA initiative will be supported by the telehealth expertise provided by GPT and the expertise of those partnering with this project: Georgia Public Web, the Georgia Department of Community Health, the National Center for Primary Care at Morehouse College, Strategic Healthcare Partners, Stat Doctors, the Georgia Association of Community Service Boards, the Georgia Primary Care Association and HomeTown Health Rural Hospital Network.

We understand that "TeleConnect GA for Better Health" will address the declining health of the citizens of Georgia's 91 counties of persistent poverty through the use of telemedicine, internet technology and broadband adoption. This lofty objective ties in with OTC's mission to train people, and especially health professionals, to enter and be successful in the workplace. OTC commits to full cooperation and collaboration to ensure that skilled employees are available to support the telecommunication applications in our area.

We whole heartedly support this initiative designed to improve better health outcomes for our underserved citizens through improved access to care.

Should you have any questions, please do not hesitate to contact me.

Sincerely

Gail Thaxton, Ed.D.
President

A UNIT OF THE TECHNICAL COLLEGE SYSTEM OF GEORGIA

1701 CARSWELL AVENUE • WAYCROSS, GA 31503 • 912.287.5827 • FAX 912.338.5300 • www.okefenokeetech.edu



864 Broad Street
Augusta, Georgia 30901-4295
(706) 826-1129 - Fax: (706) 826-4626

MARION E. BARNES
President

DANA T. BEDDEN, Ed.D.
Superintendent

CAROL ROUNTREE, Ed.D.
Director of Student Services

Date: March 10, 2010

Dear Sir:

This letter is to express my support for the Georgia Partnership for Telehealth's (GPT) grant application from the Broadband Technology Opportunity Program (BTOP) Grant to fund the sustainable broadband adoption project entitled "TeleConnect GA for Better Health."

The strength and success of this BTOP SBA initiative will result from not only the telehealth expertise provided by GPT but the expertise of those partnering with this project: Georgia Public Web, the Georgia Department of Community Health, the National Center for Primary Care at Morehouse College, Strategic Healthcare Partners, Stat Doctors, the Georgia Association of Community Service Boards, the Georgia Primary Care Association and HomeTown Health Rural Hospital Network.

We understand that "TeleConnect GA for Better Health" will address the declining health of the citizens of Georgia's 91 counties of persistent poverty through the use of telemedicine, internet technology and broadband adoption. We whole heartedly support this initiative designed to improve better health outcomes for our underserved citizens through improved access to care.

Thank you for your time and consideration. Should you have any questions, please do not hesitate to contact me.

Sincerely,

A handwritten signature in black ink, appearing to read "Dana T. Bedden", written over a horizontal line.

Dana T. Bedden, Ed.D.



South Georgia College
A Degree of Difference

March 11, 2010

Dear Mr. Strickland

This letter is to express my support for the Georgia Partnership for Telehealth's (GPT) grant application from the Broadband Technology Opportunity Program (BTOP) Grant to fund the sustainable broadband adoption project entitled "TeleConnect GA for Better Health."

The strength and success of this BTOP SBA initiative will result from not only the telehealth expertise provided by GPT but the expertise of those partnering with this project: Georgia Public Web, the Georgia Department of Community Health, the National Center for Primary Care at Morehouse College, Strategic Healthcare Partners, Stat Doctors, the Georgia Association of Community Service Boards, the Georgia Primary Care Association and HomeTown Health Rural Hospital Network.

We understand that "TeleConnect GA for Better Health" will address the declining health of the citizens of Georgia's 91 counties of persistent poverty through the use of telemedicine, internet technology and broadband adoption. We whole heartedly support this initiative designed to improve better health outcomes for our underserved citizens through improved access to care.

Thank you for your time and consideration. Should you have any questions, please do not hesitate to contact me.

Sincerely,

Melissa Y. Peacock, RN, MSN
Chair, Division of Nursing

March 9, 2010

Mr. Larry Strickland
Assistant Secretary
Department of Commerce
National Telecommunications and Information Administration
1401 Constitution Avenue - Suite 4898
Washington, DC 20230



Dear Mr. Strickland:

I am pleased to support the continuing initiatives and innovative efforts of the Georgia Partnership for Telehealth (GPT) and its collaborating partners; the Georgia Public Web, the Georgia Department of Community Health, the National Center for Primary Care at Morehouse College, Strategic Healthcare Partners, Stat Doctors, the Georgia Association of Community Service Boards, the Georgia Primary Care Association, and the HomeTown Health Rural Hospital Network, in their pursuit of a grant from the Broadband Technology Opportunities Program.

Many of Georgia's rural citizens lack adequate access to quality and specialty healthcare. With the advent of telemedicine, the access has improved, but there is still much to be done. Funding for this new initiative would profoundly impact the citizens and communities across our entire state. Among some of the anticipated benefits of the "TeleConnect GA for Better Health" are:

- enhanced and improved access to healthcare for those citizens experiencing declining health who reside in Georgia's 91 counties of persistent poverty;
- the availability of telehealth and distance learning technologies to bridge the divide between urban centers and under-served rural communities;
- bringing key community public and private sector stakeholders together who are committed to bringing better healthcare to rural Georgians and who will work cooperatively to achieve the goals and objectives of this grant; and
- the development of a long-term, self-sustaining model of telehealth and distance learning that will address the healthcare and educational needs of healthcare providers in rural Georgia.

As an organization dedicated to improving the access to quality healthcare and education in our rural community, Ty Cobb Healthcare System understands, values, and supports any initiative designed to improve the declining health of many of the citizens of our state and in our community. Please accept our endorsement of this innovative and collaborative project.

Sincerely,

A handwritten signature in blue ink that reads "J. Steven Barber".

J. Steven Barber, CFO
Ty Cobb Healthcare System, Inc.

JSB/jsr

Ty Cobb Healthcare System, Inc.

461 Cook Street

Royston, Georgia 30662

Phone: (706) 245-1825

Fax: (706) 245-1831

www.tycobbhealthcare.org



Board of Commissioners Ware County

JIMMY BROWN, Chairman
CARLOS NELSON, Commissioner
KATHY E. DAVIS, Commissioner
GENE DIXON, Commissioner
VICTOR ALDRIDGE, Commissioner

GAIL BARRON BOYD, County Manager
gbarronboyd@warecounty.com
PAM GIBSON, County Clerk
pgibson@warecounty.com
HUEY W. SPEARMAN, County Attorney

March 11, 2010

Mr. Larry Strickland
Assistant Secretary
Department of Commerce
National Telecommunications and Information Administration
1401 Constitution Avenue
Suite 4898
Washington, DC 20230

Dear Mr. Strickland:

This letter is to express my support for the Georgia Partnership for Telehealth's (GPT) grant application from the United States Department of Agriculture (USDA) Rural Utilities Services to fund the sustainable broadband adoption project entitled "TeleConnect GA for Better Health."

The strength and success of this BTOP SBA initiative will result from not only the telehealth expertise provided by GPT but the expertise of those partnering with this project: Georgia Public Web, the Georgia Department of Community Health, the National Center for Primary Care at Morehouse College, Strategic Healthcare Partners, Stat Doctors, the Georgia Association of Community Service Boards, the Georgia Primary Care Association and HomeTown Health Rural Hospital Network.

We understand that "TeleConnect GA for Better Health" will address the declining health of the citizens of Georgia's 91 counties of persistent poverty through the use of telemedicine, internet technology and broadband adoption. We whole heartedly support this initiative designed to improve better health outcomes for our underserved citizens through improved access to care.

Thank you for your time and consideration. Should you have any questions, please do not hesitate to contact me.

Sincerely,

A handwritten signature in black ink, appearing to read "Jimmy Brown".

James L. Brown,
Chairman, Ware County Board of Commissioners



P.O. BOX 1069 - WAYCROSS, GEORGIA 31502-1069 - (912) 287-4300 - FAX (912) 287-4301

Ware-County of Progress

www.warecounty.com



March 3, 2010

To Whom It May Concern:

This letter is to express my support for the Georgia Partnership for Telehealth's (GPT) grant application to the Broadband Technology Opportunities Program (BTOP) grant to fund the sustainable broadband adoption project entitled "TeleConnect GA for Better Health."

The strength and success of this BTOP SBA initiative will result from not only the telehealth expertise provided by GPT but the expertise of those partnering with this project: Georgia Public Web, the Georgia Department of Community Health, the National Center for Primary Care at Morehouse College, Strategic Healthcare Partners, Stat Doctors, the Georgia Association of Community Service Boards, the Georgia Primary Care Association and HomeTown Health Rural Hospital Network.

We understand that "TeleConnect GA for Better Health" will address the declining health of the citizens of Georgia's 91 counties of persistent poverty through the use of telemedicine, internet technology and broadband adoption. We whole heartedly support this initiative designed to improve better health outcomes for our underserved citizens through improved access to care.

Thank you for your time and consideration. Should you have any questions, please do not hesitate to contact me.

Sincerely,

A handwritten signature in black ink that reads "Rhett C. Partin". The signature is written in a cursive style.

Rhett C. Partin MBA, MHA
Executive Director
GHA Center for Rural Health
205 Dogwood Drive
Nashville, GA 31639



OFFICE OF INSURANCE AND SAFETY FIRE COMMISSIONER

JOHN W. OXENDINE
COMMISSIONER OF INSURANCE
SAFETY FIRE COMMISSIONER
INDUSTRIAL LOAN COMMISSIONER
COMPTROLLER GENERAL

March 9, 2010

SEVENTH FLOOR, WEST TOWER
FLOYD BUILDING
2 MARTIN LUTHER KING, JR., DRIVE
ATLANTA, GEORGIA 30334
(404) 656-2056 TDD# (404) 656-4031

The Honorable Larry Strickland
Assistant Secretary
Department of Commerce
National Telecommunications and Information Administration
1401 Constitution Avenue
Suite 4898
Washington, DC 20230

Dear Mr. Assistant Secretary:

I would like to express my support for the Georgia Partnership for Telehealth's (GPT) grant application from the Broadband Technology Opportunities Program (BTOP) to fund the sustainable broadband adoption project entitled "TeleConnect GA for Better Health." I have seen firsthand that the telehealth program has made a positive impact, both on rural communities, and also in our centers of specialty medicine.

We understand that "TeleConnect GA for Better Health" will address the declining health of citizens who live in Georgia's 91 counties of persistent poverty through the use of telemedicine, internet technology and broadband adoption. We whole heartedly support this initiative designed to improve better health outcomes for our underserved citizens through improved access to care.

Thank you for your time and consideration of this request. Should you have any questions, please do not hesitate to contact me at 404-656-2117.

With kindest personal regards, I am

Sincerely,

John W. Oxendine
Insurance and Safety Fire Commissioner

JWOIba

Berrien County Collaborative, Inc.



1015 Exum Road
Nashville, GA 31639
229.686.6576P/229.686.6580F



Helping Children and Families Achieve In Life

March 12, 2010

To: Mr. Larry Strickland
Assistant Secretary
Department of Commerce
National Telecommunications and Information Administration
1401 Constitution Avenue
Suite 4898
Washington, DC 20230

From: Matt Jansen, Executive Director
1015 Exum Road
Nashville, Ga. 31639

Dear Mr. Larry Strickland,

On behalf of the Berrien County Collaborative, Inc., I would like to express our support for the Georgia Partnership for Telehealth's (GPT) grant application from the Broadband Technology Opportunity Program (BTOP) Grant to fund the sustainable broadband adoption project entitled "TeleConnect GA for Better Health."

The strength and success of this BTOP SBA initiative will result from not only the telehealth expertise provided by GPT but the expertise of those partnering with this project: Georgia Public Web, the Georgia Department of Community Health, the National Center for Primary Care at Morehouse College, Strategic Healthcare Partners, Stat Doctors, the Georgia Association of Community Service Boards, the Georgia Primary Care Association and HomeTown Health Rural Hospital Network.

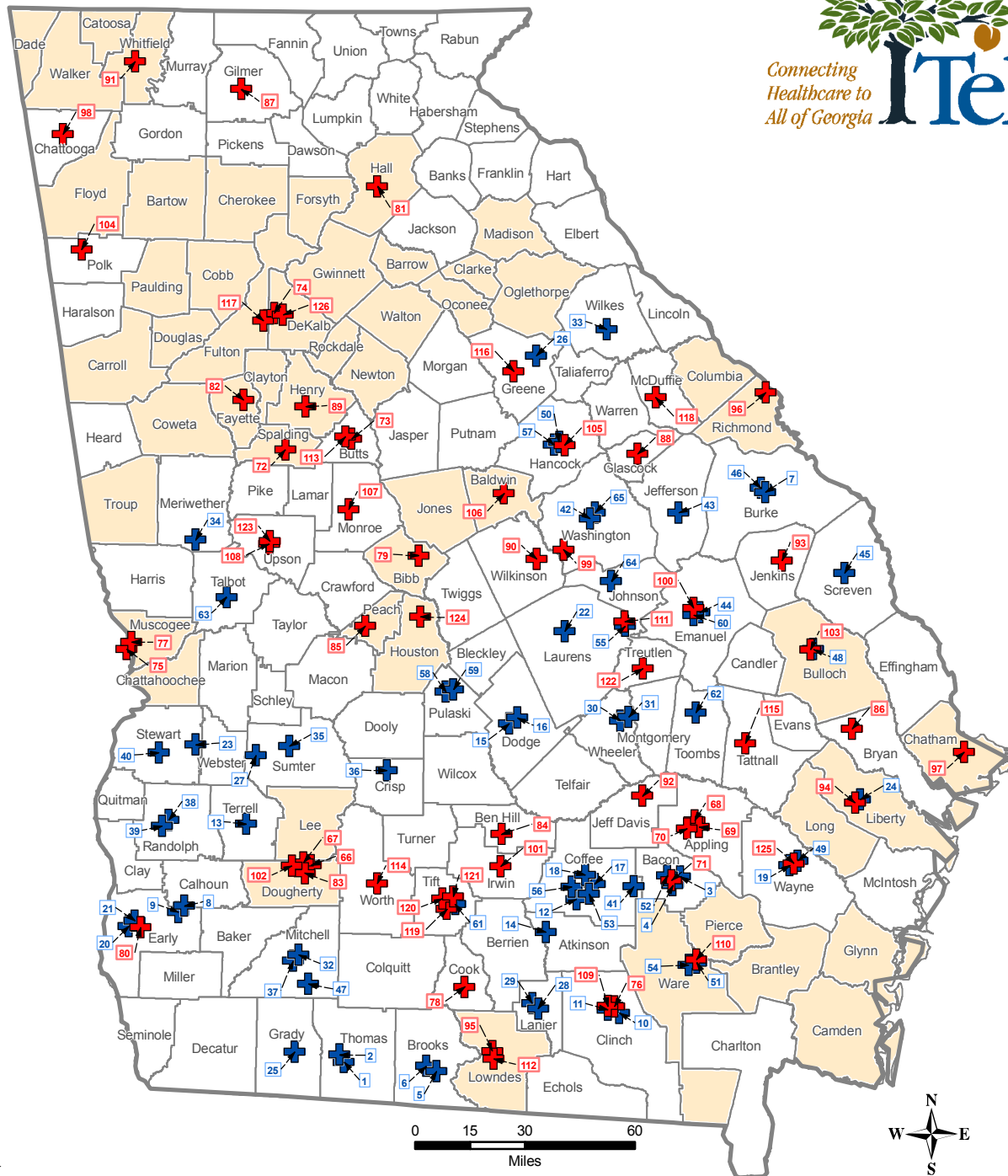
We understand that "TeleConnect GA for Better Health" will address the declining health of the citizens of Georgia's 91 counties of persistent poverty through the use of telemedicine, internet technology and broadband adoption. We whole heartedly support this initiative designed to improve better health outcomes for our underserved citizens through improved access to care.

Thank you for your time and consideration. Should you have any questions, please do not hesitate to contact me.

Sincerely,

Matt Jansen
Executive Director

Georgia Partnership for Telehealth - BTOP Project



Telemedicine Site

- + Existing Site (65)
- + New Site (61)

County

- Rural (108)
- Urban (51)

Source: Georgia Partnership for TeleHealth - March 2010
 Note: Some symbols have been moved to avoid overlap.

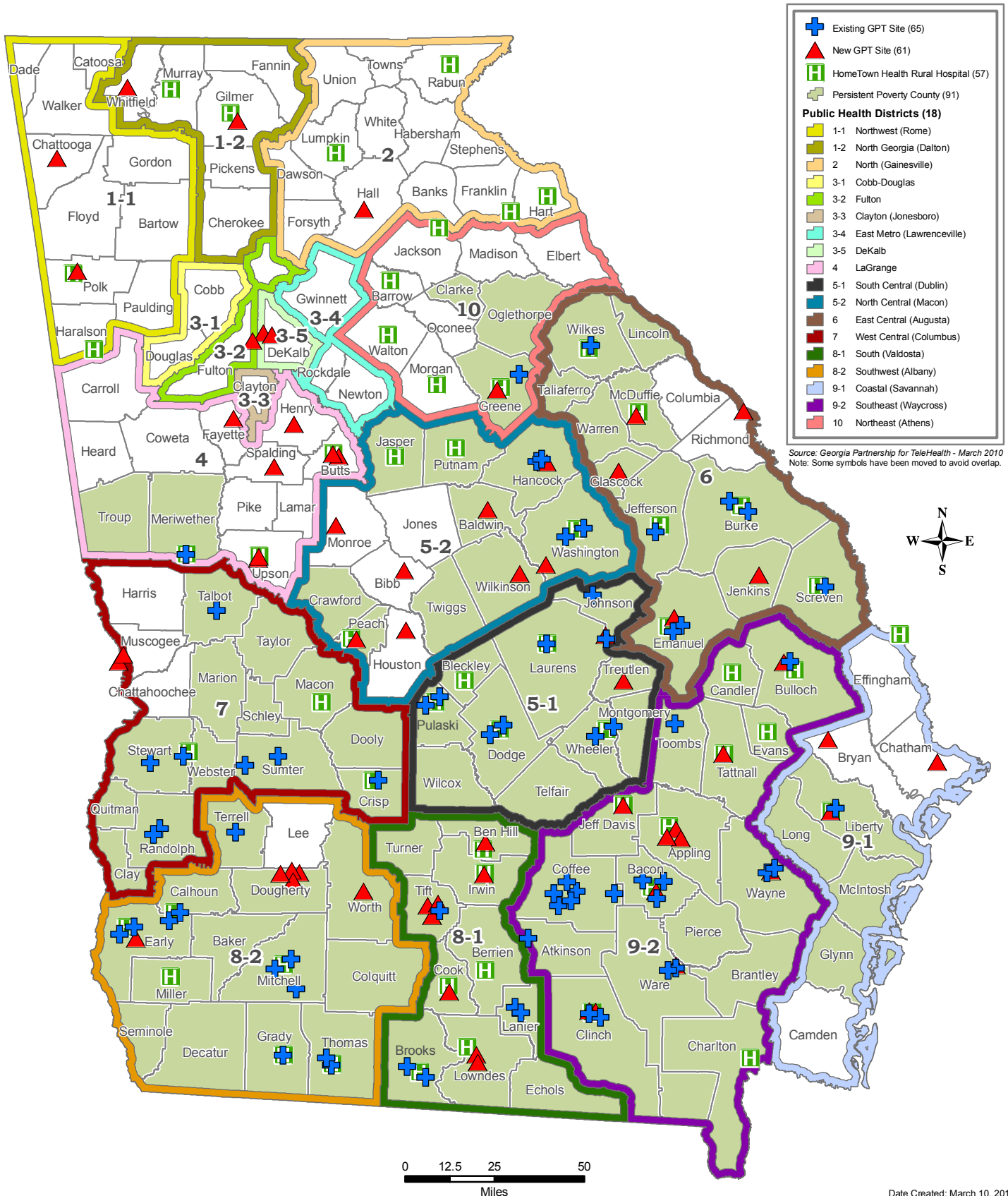
- EXISTING SITES**
- 1 Archbold Medical Center (HUB)*
 - 2 Archbold Northside * (HUB)
 - 3 Bacon County Family Medicine - Dr. Nulph
 - 4 Bacon County Hospital & Health System (Teleradiology)
 - 5 Brooks County Hospital
 - 6 Brooks County Hospital (Teleradiology)
 - 7 Burke Medical Center (Teleradiology)
 - 8 Calhoun County Hospital
 - 9 Calhoun County Hospital (Teleradiology)
 - 10 Clinch Memorial Hospital
 - 11 Clinch Memorial Hospital (Teleradiology)
 - 12 Coffee Regional Medical Center
 - 13 Dawson Health and Rehabilitation
 - 14 DMS Willacochee
 - 15 Dodge County Hospital
 - 16 Dodge County Hospital (Teleradiology)
 - 17 Douglas Medical Specialists - Dr. Arnett
 - 18 Douglas Medical Specialists - Dr. Arnett
 - 19 Dr. Jack Collipp
 - 20 Early Memorial Hospital
 - 21 Early Memorial Hospital (Teleradiology)
 - 22 Fairview Park
 - 23 Four County Health & Rehabilitation
 - 24 Gateway CSB
 - 25 Grady Memorial Hospital
 - 26 Greene Point Health & Rehabilitation
 - 27 Lillian G. Carter Health & Rehabilitation
 - 28 Louis Smith Hospital
 - 29 Louis Smith Memorial Hospital (Teleradiology)
 - 30 Lower Oconee Community Hospital, Inc.
 - 31 Lower Oconee Community Hospital, Inc. (Teleradiology)
 - 32 Medical Group of Mitchell County
 - 33 Medlink Washington
 - 34 Meriwether County Hospital Authority (Teleradiology)
 - 35 Middle Flint Behavioral Health CSB - Americus
 - 36 Middle Flint Behavioral Health CSB - Cordele
 - 37 Mitchell County Hospital
 - 38 New Horizons CSB
 - 39 New Horizons CSB
 - 40 New Horizons CSB
 - 41 Nicholls Medical Clinic
 - 42 Oconee CSB - The Point
 - 43 Ogeechee Mental Health Louisville
 - 44 Ogeechee Mental Health Swainsboro
 - 45 Ogeechee Mental Health Sylvania
 - 46 Ogeechee Mental Health Waynesboro
 - 47 Pelham Parkway Nursing Home
 - 48 Pineland CSB - Bulloch Counseling Center
 - 49 Pineland CSB - Wayne Counseling Center
 - 50 Providence of Sparta Health & Rehabilitation
 - 51 Satilla Mental Health CSB
 - 52 Satilla Mental Health CSB
 - 53 Satilla Mental Health CSB
 - 54 Satilla Mental Health CSB
 - 55 Scott Health & Rehab
 - 56 Shady Acres Health & Rehab (Ethica H&R)
 - 57 Sparta Health & Rehab Nursing Home
 - 58 Taylor Regional Hospital
 - 59 Taylor Regional Hospital
 - 60 The Sunshine House
 - 61 Tift Regional Hospital (also rural site)*
 - 62 Toombs Nursing Home
 - 63 Valley Healthcare Talbot County
 - 64 Washington County Internal Medicine - Dr. Jean Sumner
 - 65 Washington County Regional Medical Center

- NEW SITES**
- 66 Albany Health Care
 - 67 Albany Area CSB
 - 68 Altamaha Medical Clinic
 - 69 Appling Counseling Center
 - 70 Appling Healthcare System
 - 71 Bacon County Family Medicine
 - 72 Behavioral Health Center/Mental He
 - 73 Butts County Counseling Center
 - 74 Children's Hospital of Atlanta (H
 - 75 Children's Tree House - Heritage
 - 76 Clinch Memorial Hospital
 - 77 Columbus Regional Healthcare Syst
 - 78 Cook County MHC
 - 79 Crescent House-The Medical Center
 - 80 Early County Mental Health Center
 - 81 Edmondson-Telford Center for Chil
 - 82 Fayette Counseling Center
 - 83 Firefly CAC
 - 84 Fitzgerald Nursing Home
 - 85 Ft. Valley Outpatient Services
 - 86 Gateway Behavioral Health Service
 - 87 Georgia Mountains Health
 - 88 Glascock County MHC
 - 89 Henry County Counseling Center
 - 90 Heritage Healthcare of Toombsboro
 - 91 Highland Rivers CSB- Highland Riv
 - 92 Jeff Davis Hospital
 - 93 JenCo MHC
 - 94 Liberty Regional Medical Center
 - 95 Lowndes County Board of Health
 - 96 Medical College of Georgia
 - 97 MHUMC
 - 98 Oak View Health & Home
 - 99 Oconee Health & Rehab
 - 100 Ogeechee CSB
 - 101 Osceola Health Care
 - 102 Palmyra Nursing Home
 - 103 Pineland-John's/Es Placea - Crisis U
 - 104 Polk County MH Center
 - 105 Providence of Sparta Health & Reh
 - 106 River Edge Baldwin County Counsel
 - 107 River Edge Monroe County Counsel
 - 108 Riverside Health & Rehab
 - 109 Satilla CSB
 - 110 Satilla Regional Medical Center
 - 111 Scott Health & Rehab
 - 112 South Georgia CSB
 - 113 Sylvan Grove Hospital
 - 114 Sylvester Health Care
 - 115 Tattall Counseling Center
 - 116 TenderCare Clinic, Inc.
 - 117 The Center for Health and Rehabil
 - 118 Thomson Health & Rehab
 - 119 Tift County MHC
 - 120 Tift Health Care - NH
 - 121 Tift Regional Medical Center
 - 122 Truettlen Nursing Home
 - 123 Upson County Counseling Center
 - 124 Warner Robins Outpatient Services
 - 125 Wayne County Hospital
 - 126 Winn Way Mental Health Center,

0 15 30 60
 Miles
 Date Created: March 10, 2010



Teleconnect Georgia for Better Health



GTA DEMOGRAPHICS for SBA BTOP GRANT

91 Persistent Poor Counties	Zip Code	Congressional District	**Population	*Below Poverty, Persons	*Below Poverty, % of Persons, 2008	*Below Poverty, % of Children Age 0-17, 2008	*School Enrollment, Head Count, Total K-12, 2007-08	* % Economically Disadvantaged 2007-08	*Enrollment, % Black, 2007-08	*Enrollment, % Hispanic, 2007-08	Rural Community Colleges	**Primary Care Physicians	Rural Hospital	Critical Access Hospital	FQHC Site	RHC Sites	Current Telehealth Sites	Proposed Telehealth Sites
Appling	31513	1	17,737	3,586	20.3	31.3	3,858	61	24.8	9.3	X	19	X				X	XXX
Atkinson	31642	1	7,970	2,001	24.6	34.8	1,963	80.7	19.3	30.8		2			X		X	
Bacon	31510	1	10,294	1,933	19.3	29.8	2,027	54.8	21	5.4		12		X		X	X	X
Baker	39870	2	3,998	985	26	36.5	520	94.4	72.9	6.5		1			X			
Baldwin	31059	8	45,576	8,885	23.5	27.3	6,375	65.9	63.6	1.7	X	58	X				X	X
Ben Hill	31750	8	17,221	3,985	23.2	33.7	3,656	70.1	43.6	7.8		14	X			X		X
Berrien	31639	1	16,638	3,679	21.9	33.2	3,419	59.1	14.1	5		8	X				X	
Bleckley	31014	8	11,984	2,165	19.5	26.9	2,676	55.7	27.3	1.9	X	10		X			X	
Brantley	31503	1	15,286	2,699	17.6	27.1	3,919	53.7	2.8	1.3		3					X	
Brooks	31643	2	16,127	3,541	22	34.4	2,665	79.1	54.8	5.7		6		X		X	X	
Bulloch	30458	12	63,587	14,601	23.1	23.7	10,174	52.8	36.5	3.2	X	41	X				X	X
Burke	30830	12	22,872	6,318	28.1	44.5	5,091	83.7	66.3	1.2		14	X			XXX	X	
Calhoun	39866	2	6,048	1,561	33.4	37.7	753	87.9	92.4	3.6		8		X	X	X	X	
Candler	30439	12	10,096	2,400	23.7	34.8	10,970	40.8	24.9	4.1		6		X	X			
Charlton	31537	1	10,595	1,986	21.5	29.2	2,174	66.2	29.7	16.1		11		X	X			
Clarke	30601	10	109,341	32,560	30.8	26.2	2,086	63.1	30	0.5		124	X				X	
Clay	39851	2	3,164	984	31.1	50.4	367	95.7	96.2	0		1						
Clinch	31643	1	7,052	1,668	24.8	33.3	1,525	65.9	37.1	0.8		4		X			X	XX
Coffee	31533	1	39,184	8,116	21.4	28.2	8,745	68.5	32.8	12.2	X	34	X		X	X	X	
Colquitt	31768	8	43,459	10,011	22.6	29.8	9,718	64.8	29.2	16.6		31	X			XX		
Cook	31620	1	16,291	3,411	20.8	31.2	3,498	61.2	36.4	6.3		12	X					X
Crawford	31078	2	12,623	2,193	17.8	24.9	2,097	65.1	27.5	1.3		3						
Crisp	31015	2	21,775	5,987	27.7	43.9	4,838	71.6	57.6	1.7	X	23	X		X	XX		
Decatur	39817	2	27,984	6,980	25.1	37	6,224	67.3	50.9	7	X	54	X					
Dodge	31023	8	19,613	4,111	22.6	29.3	3,543	64.5	35.5	2.2	X	22	X			X	X	
Dooly	31092	2	11,648	2,725	27.2	34.2	1,651	90.7	75.5	10.1		8			X			
Dougherty	31701	2	95,211	23,375	25.3	35.9	18,088	77	86.3	1.4	X	133	X					XXXX
Early	39823	2	12,014	2,979	25.9	38.3	2,651	74.3	62.3	2.4		6		X	X	X	X	
Echols	31648	1	4,102	1,076	26.7	36.7	808	62.8	5.3	27.8		1						
Emanuel	30401	12	22,047	5,767	26.2	37.1	4,840	70.1	42.5	3.7	X	13	X		X	X	X	XX
Evans	30414	12	11,271	2,736	24.8	34.3	1,854	75.6	41.9	14.9		8	X					
Glascoc	30810	12	2,616	469	16.8	19	673	52.6	7.7	0.7		5			X		X	X
Glynn	31520	1	71,480	12,767	17	26.4	14,217	47.9	38.3	6.8	XX	67	X				X	
Grady	39827	2	24,287	5,557	22.4	32.9	4,899	58.4	38.5	9		17	X				X	
Greene	30642	10	15,451	2,913	19	31.6	2,263	76.8	67.8	6.6	X	13		X	X		X	X
Hancock	31087	12	9,454	2,472	31.4	39.8	1,420	85.6	97.3	0.3		5			X	X	X	X
Irwin	31774	8	10,126	2,071	22.3	32.5	1,926	65.7	35.1	2.1		14	X		X	X		X
Jasper	31064	8	13,023	2,116	15.4	23.7	2,432	60.9	27.8	5.2		19		X			X	
Jeff Davis	31539	1	13,039	2,550	19.1	29.5	3,094	60.3	16.4	11.8	X	10		X			X	X
Jefferson	30434	12	16,648	3,667	22.9	32.9	3,385	82	72.5	1.5		13	X			XXXX	X	
Jenkins	30442	12	8,587	2,280	26.8	39.3	1,744	76.3	54.1	4.4		3		X		X		X
Johnson	31096	12	8,905	2,181	28.2	32.1	1,327	72.2	47.3	0.9		4			X		X	
Lanier	31635	1	7,416	1,710	21.4	31.8	1,906	66.2	28.5	2.7		4		X			X	

Laurens	31021	8	46,680	9,721	21	31	6,998	54.6	30.6	2.4	X	63	X				X		
Liberty	31310	1	63,021	8,531	15.4	20	12,761	57.8	52.6	7.3	X	36	X	X		XX	X		
Lincoln	30817	10	8,179	1,476	18.4	27.1	1,410	59.1	38.1	0.4		2							
Long	31316	1	10,905	2,624	23.2	33.1	2,691	66.8	27.2	12.4		0							
Lowndes	31601	2	98,594	18,956	19.6	24.1	10,823	40.8	22.2	5	X	78					X	XX	
Macon	31063	2	13,554	3,284	26.5	35.2	2,123	82	79.7	4.6		9	X			X			
Marion	31803	2	7,016	1,651	24.1	36.4	1,622	68.4	39	6		5							
McDuffie	30824	10	21,416	3,836	17.8	27.3	4,555	63.7	49.3	2		13	X				X		
McIntosh	31569	1	10,928	2,123	18.8	31.1	2,120	71	44.4	1.3		3							
Meriwether	30222	3	22,838	4,174	18.7	28.9	3,918	80.5	57.7	1		12		X			X		
Miller	39837	2	6,100	1,543	25.7	40.9	1,152	59.3	39	0.5		9		X		XX	X		
Mitchell	31730	2	23,497	5,979	27.3	34.2	2,807	75.8	63.2	4.7		13		X		XXX	X		
Montgomery	30445	12	8,876	1,839	23	30.4	1,290	71.4	34.7	8.8		3				XX			
Oglethorpe	30648	10	13,444	1,998	14.2	19.7	2,579	48.3	17.8	4.6		4							
Peach	31030	2	24,543	5,164	20.6	28.1	4,640	67.8	49.2	9.1	XX	11		X			X	XX	
Pierce	31516	1	17,173	3,157	17.6	27.8	3,695	51.8	10.3	4.1		5			X				
Pulaski	31036	8	9,659	1,728	20.2	25.1	1,714	56.1	40.1	3.4		12	X				X		
Putnam	31024	10	19,666	3,203	15.8	27.2	2,986	68.9	42.7	8.5		12		X		XX	X		
Quitman	39854	2	2,599	623	23.1	36.3	293	96.3	73.7	0.3		1	X		X				
Randolph	39840	2	7,343	1,859	27.2	39	1,541	88.8	89.8	0.8	X	6		X		XX	X		
Schley	31806	2	3,948	752	17.7	24.3	1,478	50.3	17.8	3.5		0				XX			
Screven	30467	12	15,189	3,209	21.9	29.8	3,006	78.1	54.2	0.6		5		X			X		
Seminole	39845	2	9,098	2,066	23.1	37.7	1,810	76.7	49.3	1.8		10							
Stewart	31815	2	4,803	1,190	27.1	40.2	742	88.3	95	0.1		2		X	X		X		
Sumter	31709	2	32,408	8,757	28.7	40.8	6,007	79.7	73.5	5		26	X		X				
Talbot	31827	2	6,593	1,432	22.4	32.5	700	82.9	96	0.1		0			X		X		
Taliaferro	30631	12	1,857	488	26.6	38.8	278	93.7	79.9	0		0			X				
Tattnell	30453	12	22,890	4,853	24.5	31.8	3,795	68.3	27.7	16		18		X	X	XX		X	
Taylor	31006	2	8,716	2,169	25.8	33.4	1,708	71.3	48	0.7		1	X			X			
Telfair	31055	1	13,247	3,248	33	33.8	1,916	68	43.9	4.2		8							
Terrell	39842	2	10,561	2,852	28.9	38.9	1,720	70.4	93.8	0.8		3							
Thomas	31757	2	44,263	9,171	20.7	27.9	6,105	55.9	31.4	2.9		52	X		X	X	X		
Tift	31793	8	40,467	8,605	21.3	28.9	8,476	58.4	35.7	12.8	X	44	X				XX	XXX	
Toombs	30436	12	26,932	6,697	24.2	34.7	3,148	75.6	19	20.5		30	X			XX			
Treutlen	30457	12	6,749	1,905	28.7	39.2	1,291	70.3	38.7	0.7		1			X				
Troup	30240	3	62,295	11,013	17.9	25.8	13,721	58.5	40	2.1		45	X		X				
Turner	31714	8	9,454	2,592	28.6	41.4	2,005	74.6	56.5	3.1		3				X			
Twiggs	31044	8	10,481	2,126	21.1	29.7	1,225	82	67.7	0.3		0							
Ware	31501	1	34,966	6,909	20.7	31.2	7,049	60.7	37.6	2.7	X	53	X		X		X	X	
Warren	30828	12	6,077	1,478	25.7	35.7	884	95.3	94	0.3		3			X				
Washington	31082	12	19,947	4,560	23.4	30.2	3,659	67.3	66.8	1.2		23	X		X		X	X	
Wayne	31545	1	28,309	5,480	20.3	28.4	6,047	57.4	23	4.5	X	18	X				X	X	
Webster	31824	2	2,250	421	19.5	29.4	521	67.5	53.7	2.9		0	X						
Wheeler	30411	1	6,574	1,799	35.2	35.6	1,102	72.3	34.9	6.4		3		X		X	X		
Wilcox	31001	8	8,610	2,091	30.8	35.6	1,494	72.8	40.7	3.1		1			X				
Wilkes	30673	10	10,344	2,204	21.8	31.9	1,819	70.3	52	3.8		9	X	X	X		X		
Wilkinson	31042	8	10,111	1,908	19.3	27	1,798	77.3	55.8	2.1		4					X	X	
Worth	31791	2	21,442	4,467	21.1	31.5	4,140	61.5	38.9	0.8		16		X		X		X	
TOTALS			1,848,452	403,668	23.18	32.26	331,421	69.05	46.58	5.00		23	1575	36	26	30	47	50	35

*http://gbpw.georgia.gov/vgn/images/portal/cit_1210/41/24/1142081882006%20Specialty%20by%20County%20Spreadsheet.pdf

**Source: Composite State Board of Medical Examiners, 2006 Georgia Physician Survey - Updated 5/6/2008

<http://www.georgiastats.uga.edu/crossection.html>

Poverty

2008 Model-based Estimate

County	Population	Type of Practice				Total #'s
		Family Practice #	Internal Med #	Pediatrics #	OB/Gyn#	
REGION 1 Liaison - Tori Rodriguez						
Banks	15,955	1	2	0	0	3
Barrow	59,437	14	6	6	3	29
Chattooga	25,939	7	1	0	1	9
Fannin	21,777	16	3	4	2	25
Gilmer	27,240	10	5	2	0	17
Gordon	49,645	19	11	6	3	39
Habersham	39,396	8	11	5	2	26
Haralson	28,144	9	4	0	0	13
Jackson	52,010	11	3	4	1	19
Lumpkin	24,833	8	3	2	2	15
Murray	40,191	5	4	3	1	13
Pickens	28,178	7	8	3	3	21
Polk	40,303	19	3	0	0	22
Rabun	16,151	5	3	1	0	9
Stephens	25,076	6	5	6	4	21
Towns	10,270	6	2	0	0	8
Union	19,827	10	2	1	0	13
Walton	75,543	14	14	5	2	35
White	23,793	6	0	0	1	7

344

REGION 2 Liaison - GiGi Goble						
Baldwin	45,576	19	18	8	6	51
Burke	22,872	8	3	1	1	13
Elbert	20,654	8	5	0	0	13
Emanuel	22,047	7	3	0	1	11
Franklin	21,495	10	5	2	2	19
Glascocock	2,616	4	1	0	0	5
Greene	15,451	6	3	2	1	12
Hancock	9,454	5	0	0	0	5
Hart	23,881	9	4	0	0	13
Jasper	13,023	2	4	0	0	6
Jefferson	16,648	6	4	2	0	12
Jenkins	8,587	2	1	0	0	3
Johnson	8,905	2	2	0	0	4
Lincoln	8,179	2	0	0	0	2
Morgan	17,296	2	3	0	0	5
Putnam	19,666	5	3	2	1	11
Screven	15,189	3	2	0	0	5
Taliaferro	1,857	0	0	0	0	0
Warren	6,077	1	2	0	0	3
Washington	19,947	5	10	2	2	19
Wilkes	10,344	3	3	2	1	9

Wilkinson	10,111	3	1	0	0	4
-----------	--------	---	---	---	---	---

225

REGION 3 Liaison - Rena Brewer

Butts	22,483	3	2	2	0	7
Calhoun	6,048	5	1	0	1	7
Clay	3,164	0	1	0	0	1
Decatur	27,984	12	21	12	5	50
Dooly	11,648	3	3	1	1	8
Early	12,014	6	0	0	0	6
Grady	24,287	8	4	0	3	15
Macon	13,554	5	2	0	1	8
Meriwether	22,838	6	4	0	1	11
Miller	6,100	5	1	1	1	8
Mitchell	23,497	7	2	2	1	12
Monroe	23,599	6	2	0	0	8
Peach	24,543	7	4	0	0	11
Quitman	2,599	1	0	0	0	1
Randolph	7,343	5	0	0	0	5
Schley	3,948	0	0	0	0	0
Seminole	9,098	2	2	2	2	8
Stewart	4,803	2	0	0	0	2
Sumter	32,408	7	7	4	6	24
Talbot	6,593	0	0	0	0	0
Taylor	8,716	1	0	0	0	1
Thomas	44,263	17	12	10	6	45
Troup	62,295	8	14	8	10	40
Upson	27,485	5	4	4	2	15
Webster	2,250	0	0	0	0	0

293

REGION 4 Liaison - Marty Nall

Appling	17,737	4	8	2	3	17
Bulloch	63,587	13	11	8	9	41
Camden	46,049	7	13	7	3	30
Candler	10,096	5	1	0	0	6
Effingham	46,371	13	6	0	1	20
Evans	11,271	4	1	1	1	7
Jeff Davis	13,039	4	4	0	0	8
Laurens	46,680	20	22	6	9	57
Liberty	63,021	10	7	12	4	33
Montgomery	8,876	1	2	0	0	3
Tattnall	22,890	15	3	0	0	18
Toombs	26,932	8	6	9	5	28
Treutlen	6,749	1	0	0	0	1
Wayne	28,309	8	3	3	2	16
Wheeler	6,574	2	0	0	0	2

287

REGION 5 Liaison - Marty Nall

Atkinson	7,970	1	1	0	0	2
Bacon	10,294	5	4	1	1	11
Ben Hill	17,221	8	3	1	1	13
Berrien	16,638	6	1	0	0	7
Bleckley	11,984	4	3	1	1	9
Brooks	16,127	4	1	1	0	6
Charlton	10,595	5	3	1	1	10
Clinch	7,052	1	2	1	0	4
Coffee	39,184	12	8	6	4	30
Colquitt	43,459	15	7	3	3	28
Cook	16,291	10	1	0	1	12
Crisp	21,775	6	6	4	3	19
Dodge	19,613	7	7	5	2	21
Irwin	10,126	1	1	1	1	4
Lanier	7,416	2	2	0	0	4
Lowndes	98,594	26	22	8	10	66
Pierce	17,173	5	0	0	0	5
Pulaski	9,659	5	3	1	2	11
Telfair	13,247	5	3	0	0	8
Tift	40,467	10	12	11	7	40
Turner	9,454	3	0	0	0	3
Ware	34,966	14	19	9	6	48
Wilcox	8,610	0	1	0	0	1
Worth	21,442	9	3	3	0	15

	HTH	CAH	FQHC	RHC	Telemedicine
	Site	Site	Site	Site	Site
	X		X		
	X		X		
			X		X
	X		X		X
					X
	X	X			
	X				X
	X				
	X	X			
	X	X	X		X
		X			X
					X
	X				X

					X
	X				X
			X		
	X		X		X
	X		X		X
			X		X
	X	X	X		
			X		X
	X		X		
	X	X			X
	X				X
		X			
			X		
			X		
			X		X
	X	X	X		X

--	--	--	--	--	--



	X	X			
	X	X	X		X
			X		
	X	X	X		X
	X				
	X				
	X	X			X
	X	X			X
	X	X			X
		X			X
		X			
			X		
		X			X
	X	X	X		X
	X		X		
			X		X
	X		X		X
			X		
	X				



	X				X
	X				
					X
	X	X	X		
	X	X			X
	X				
	X	X			X
	X				X
	X	X			X
	X	X	X		
			X		
					X
		X			



			X		X
		X			X
	X				
	X				X
	X	X			X
	X	X			X
	X	X	X		
	X	X			X
			X		X
	X				
	X		X		
	X				X
	X		X		
	X	X			X
	X				X
			X		
	X				X
					X
			X		X
			X		
		X			

County	Practices Currently Using an E H R	Hospital / Physician Integrated E H R
Appling		
Atkinson		
Bacon		
Baldwin		
Banks		
Barrow		
Ben Hill		
Berrien		
Bleckley		
Brooks	YES	YES
Bulloch		
Burke		
Butts		
Calhoun		
Camden		
Candler		
Charlton		
Chattooga		
Clay		
Clinch		
Coffee		
Colquitt		
Cook		
Crisp		
Decatur		
Dodge		
Dooly		
Early	YES	YES
Effingham		
Elbert		
Emanuel		
Evans		
Fannin		
Franklin		
Gilmer		
Glascock		
Gordon		
Grady	YES	YES
Greene		
Habersham		
Hancock		
Haralson	YES	YES
Hart		
Irwin		

Jackson
Jasper
Jeff Davis
Jefferson
Jenkins
Johnson
Lanier
Laurens
Liberty
Lincoln
Lowndes
Lumpkin
Macon
Meriwether
Miller
Mitchell
Monroe
Montgomery
Morgan
Murray
Peach
Pickens
Pierce
Polk
Pulaski
Putnam
Quitman
Rabun
Randolph
Schley
Screven
Seminole
Stephens
Stewart
Sumter
Talbot
Taliaferro
Tattnall
Taylor
Telfair
Thomas
Tift
Toombs
Towns
Treutlen
Troup
Turner

YES

YES

YES

YES

YES

YES

Union
Upton
Walton
Ware
Warren
Washington
Wayne
Webster
Wheeler
White
Wilcox
Wilkes
Wilkinson
Worth
TOTALS

Name of E H R Software

Siemens

Siemens

Siemens

Meditech

CPSI

Siemens

Siemens

Core Funding Budget - Year 1

Paid Quarterly

Administrative start up costs

a. Personnel	Project Director Assist Director HIT Manager Rural Liaison 4 Rural Liaisons	
b. Fringe Benefits		30%
c. Travel		
Mileage	40,000	0.55
Lodging & food	100.00 lodging and 30.00 for meals x 30 10 days per n	
d. Equipment		
e. Supplies	Marketing Supplies, Printing	10%
f. Contractual	HTH Education, Outreach & Mgmt Services	
g. Construction		
h. Other		
Legal Fees	Morris, Manning & Martin	
License Fees		
Rent		
Telecommunications: Network, Phone		

TOTAL

Federal
In kind
Total Budget

Federal Funds

In Kind

\$70,000	
\$40,000	
\$50,000	
\$50,000	
	250,000
\$21,000	
\$12,000	
\$15,000	
\$15,000	
	75,000
22,000	
10,000	5,600
\$150,000	\$124,000
50,000	
\$200,000	\$20,000
0	
\$10,000	
\$1,000	
12,000	8,000
10,000	
\$738,000	\$482,600
482,600	
\$1,220,600	

See quote

Complete deliverable for education and outreach