



## **New Mexico State Broadband Initiative Mapping Methodology: April 1, 2012**

---

Prepared for:  
**Department of Information Technology**  
715 Alta Vista Street  
Santa Fe, NM 87502  
Program Manager: Gar Clarke  
Contact: [george.clarke@state.nm.us](mailto:george.clarke@state.nm.us)

---

Prepared by:  
**Earth Data Analysis Center**  
The University of New Mexico  
MSC01 1110  
1 University of New Mexico  
Albuquerque, NM 87131-0001  
Technical Lead: Shirley Baros  
Contact: [sbaros@edac.unm.edu](mailto:sbaros@edac.unm.edu)

---

# **New Mexico State Broadband Initiative**

## **Mapping Methodology: April 1, 2012**

### **Table of Contents**

|  |    |
|--|----|
| Introduction .....   | 1  |
| Data Submittal Description .....                                 | 1  |
| Provider Participation .....                                     | 2  |
| Data Verification Techniques .....                               | 2  |
| Workflow Processing Scheme .....                                 | 3  |
| 1. Data Collection .....   | 5  |
| 2. Data Validation .....   | 6  |
| 3. Data Processing .....   | 6  |
| 4. NMBB Report and Submittal .....                               | 10 |
| NMBB System Security .....                                       | 10 |
| Lessons Learned .....  | 11 |
| NMBB Web Map .....   | 12 |
| Appendix A: Table of New Mexico Internet Service Providers ..... | 13 |
| Appendix B: ISP-Data Verification and Validation .....           | 14 |
| Appendix C: Feedback and Propagation Map .....                   | 16 |
| Appendix D: Table of Abbreviations and Acronyms .....            | 17 |

# New Mexico State Broadband Initiative

## Methodology: April 1, 2012

### Introduction

The State of New Mexico (hereafter, NM or State), through its agents Earth Data Analysis Center (EDAC [Mapping Team]) at The University of New Mexico and NM Department of Information Technology (DoIT), submitted the April 1, 2012 New Mexico Broadband (NMBB) Program data package, in compliance with the National Telecommunications and Information Administration (NTIA) State Broadband Initiative Program (SBI).

### Data Submittal Description

The NMBB April 1, 2012 data submission includes:

- NMBB\_DeliverableMemo\_2012\_04\_01.pdf: This document describes NMBB data submittal components, state-restricted data fields, and contact information.
- NM\_SBDD\_2012\_04\_01.gdb: The NMBB geodatabase was created to NTIA standards and includes FGDC-compliant metadata for the database layers.
- NM\_DataPackage\_2012\_04\_01.xls: The FCC-prepared data-package spreadsheet consists of three worksheets for overview and checklist, record count, and provider table.
- NM\_2012\_04\_01.txt: The data receipt file generated from running the Check Submission Tool, lists pass/fail for received data-submission layer and field entries.
- NM\_ReadMe\_2014\_04\_01.txt: This readme gives a brief description on the error or warning messages generated by the Check Submission Tool.
- NM\_Methodology\_2012\_04\_01.pdf: This Methodology document is included in the submitted package.
- NM\_Changes\_and\_Corrections\_2012\_04\_01.pdf: The document corresponds to a readme document, especially for Internet Service Provider (ISP) information.
- NMBB\_Provider\_Data\_Request\_Template.xls: The data-request spreadsheet contains an overview and upload instructions in addition to eight worksheets for different types of service, subscriber speed, and community anchor institutions.

All files were zipped together and submitted as NM\_SBDD\_20120401.zip.

| SBDD Geodatabase Layer        | Number of Records: April 1, 2012 |
|-------------------------------|----------------------------------|
| BB_Service_Address            | 0*                               |
| BB_Service_Road_Segment       | 4269                             |
| BB_Service_CensusBlock        | 161827                           |
| BB_Service_CAInstitutions     | 2718                             |
| BB_Service_Wireless           | 35                               |
| BB_Service_Overview           | 150                              |
| BB_ConnectionPoint_LastMile   | 0*                               |
| BB_ConnectionPoint_MiddleMile | 456                              |

\* Due to restrictions in the Non-disclosure Agreement (NDA) with New Mexico Internet Service Providers (ISPs), New Mexico cannot populate the Service Address and Last-Mile feature classes in the NMBB Geodatabase.

## Provider Participation

The NMBB Program requested broadband data in January 2012 from sixty-three (63) companies, which represented sixty-nine (69) NM Internet Service Providers (ISPs).

A total of thirty-three different ISPs, representing twenty-seven companies, responded to the April 2012 (Round 5) data request. Of those, twenty-six ISPs (representing twenty-two companies) provided data and the rest indicated no changes to their previously-submitted data. One ISP was identified as ‘not a broadband provider’ because of the provided speeds, which didn’t meet broadband requirements. One previously contacted company was not included in this Round-5 data request because it had been purchased by a different company.

| Internet Service Providers                 | Number: April 1, 2012 |
|--|-----------------------|
| Contacted                                  | 69                    |
| Responded: Provided Data                   | 26                    |
| Responded: No Changes to Data              | 7                     |
| Responded: Will not Participate            | 0                     |
| Responded: Not NM Broadband Provider       | 1                     |
| Did Not Respond: Previously Submitted Data | 10                    |
| Did Not Respond                            | 25                    |

See *Appendix A: Table of New Mexico Internet Service Providers* for those ISPs included in the data request and the participating ISPs.

## Data Verification Techniques

### Consistency Checks

- EDAC reviewed data provided by NM ISPs for completeness (and/or consistency), per NTIA Data Transfer Model requirements. The NMBB Program contacted ISPs by e-mail to request any missing information.  
This review included comparing newly provided data with the provider’s previous data sets. Discrepancies or inconsistencies were noted and addressed through e-mail correspondence with the provider. *Appendix B: ISP-Data Verification and Validation* presents examples of these e-mails. See sections 1. *Data Collection*, 1.5 *Data Evaluation* and 2. *Data Validation*, 2.1 *Data Assessment*, 2.6 *Final Data Validation*.
- For those ISPs who provided block- or segment-level coverage, the Mapping Team checked for coverage containment within known service boundaries.  
See section 3. *Data Processing*, 3.3 *GIS Data Verification*.
- For ISPs providing wireless coverage, the Team checked for coverage containment to New Mexico. (3.3 *GIS Data Verification*)
- If an ISP provided Census Block shapefiles, the Team checked the area of the block to confirm that it fell into the categories for area less than 2 sq mi or greater than 2 sq mi. (3.3 *GIS Data Verification*)

- The Mapping Team performed speed checks on data received from the ISPs to make sure they met broadband requirements.  
(3.3 GIS Data Verification)
- Topology is validated after loading the data into the geodatabase to identify any inconsistencies in data.  
See section 3. *Data Processing*, 3.6 *Validate Geodatabase*.

### **Geocoding**

- The Mapping Team geocoded address data using different reference street data sets to determine which road reference data set provided the best match. Sometimes a combination of reference data sets was used to obtain better address match rates.  
See section 3. *Data Processing*, 3.1, 3.2 *GIS Data*.
- Unmatched records were sent to the ISP as part of the validation process, with a request for better address information.  
See section 3. *Data Processing*, 3.3, 3.4 *GIS Data Verification, Updates, and Edits*.

### **NM ISP Feedback Loop**

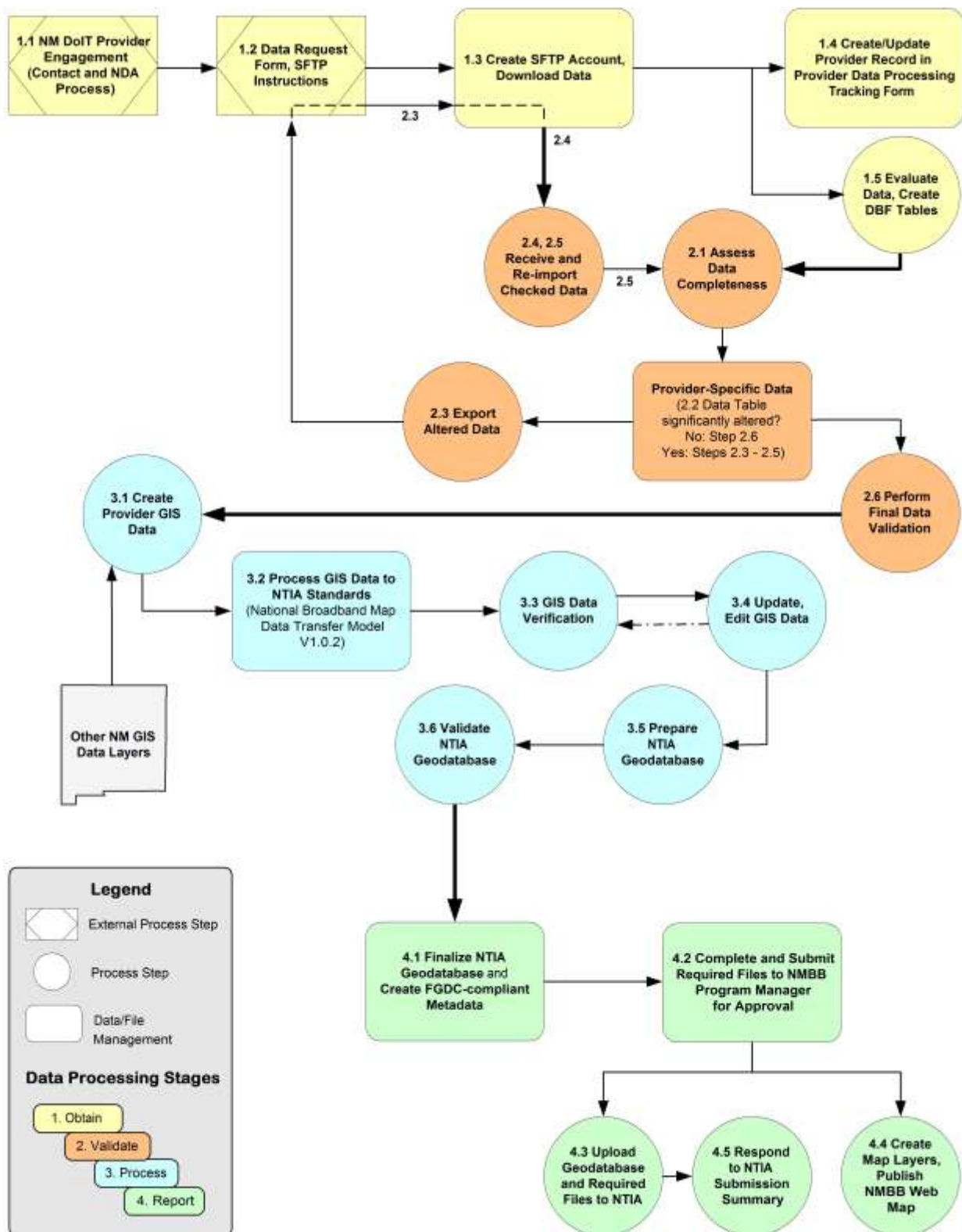
- After processing ISP data, the Mapping Team sent Feedback maps for approval. Any issues for how the service area was represented on the map, such as addition or removal of service, were addressed and corrected, as appropriate. Revised maps then were sent to the provider for review and approval. Feedback maps also included propagation-model results for Wireless broadband.  
See section 3. *Data Processing*, 3.3, 3.4 *GIS Data Verification, Updates, and Edits*.  
See *Appendix C: Feedback and Propagation Model Map*.

## **Workflow Processing Scheme**

New Mexico acknowledges the importance of understanding data reliability and integrity as the Provider data are processed for NTIA submittal. The NMBB Data Workflow and Processing Scheme includes four broad stages:

1. Obtain – Acquire raw Provider data.
2. Validate – Check for internal data consistency and for consistency with external data sources.
3. Process – Develop Geographic Information System (GIS) data and update NTIA Geodatabase.
4. Report – Submit the final Geodatabase to NTIA.

These stages and their relationships are depicted in the diagram below, and are discussed in the sections that follow. The April 1, 2012 Data Workflow and Processing Scheme did not change from the April 2011 scheme and so retained the V3.0 designation.



New Mexico Broadband Data Workflow and Processing Scheme V3.0 04.01.2012 EDAC

Figure 1 New Mexico Broadband Workflow and Processing Scheme

## 1. Data Collection

### 1.1 Provider Engagement

The NM Department of Information Technology established contact with each New Mexico Broadband Provider and negotiated a signed NDA with the State and with EDAC, as required.

### 1.2 Data Request

EDAC sent an e-mail requesting broadband data to sixty-three NM companies (sixty-nine ISPs) in January 2012, and a reminder e-mail in February to those who had not responded. In addition to an NMBB Program overview and formal request for data, the message included a Web link for the NM Broadband Data Request Form (MS Excel Worksheet); this form included instructions for completing the eight data worksheets and for securely uploading Provider data to the EDAC Secure FTP site.

#### Data Request Schedule

|   |           |
|---|-----------|
| NMBB Round 5 Data Collection Announcement | 1/18/2012 |
| NMBB ISP Data Collection Due              | 2/20/2012 |
| NMBB Feedback Maps to ISPs for Approval   | 3/19/2012 |
| NMBB ISP Feedback Due                     | 3/23/2012 |
| NTIA Round 5 Data Due                     | 4/1/2012  |

### 1.3 Data Receipt

EDAC created a Secure File Transfer Protocol (SFTP) site for broadband data upload, and created an account on the site for each NM Provider. Each Provider is assigned a unique username and password; this account information is stored in the NMBB SFTP Account Management form.

Provider data arrive in numerous formats, including NMBB or Provider spreadsheets, shapefiles, CAD files, and text files. These data are downloaded from the SFTP site to the EDAC network.

### 1.4 Provider and Data Tracking

EDAC creates or updates the specific Provider record in a Provider Data Processing Tracking Form. Throughout the data process, each Tracking Form step is recorded with analyst initials and date of task completion. Steps include:

- Record Provider name information and the assigned 2-digit Primary Key (PKey).
- Record the Holding Company Name, DBA Name, FRN (if available), and whether Community Anchor Institutions data are provided.
- Record type of files submitted; date of data submission and the initials of the receiving GIS analyst; and how data were submitted (e.g., FTP or physical medium).

### 1.5 Data Evaluation

EDAC evaluates the uploaded Provider data for consistency with the NTIA data model and previously submitted data and creates database-format tables.

## 2. Data Validation

### 2.1 Data Assessment

EDAC assesses the submitted data for completeness according to the National Broadband Map Data Transfer Model V1.0.2:

- Identify fields (names, types);
- Fill in missing data, if possible; and
- Check field codes, and standardize the values where appropriate.

### 2.3 Data Export

If the data are incomplete, based upon the above assessment steps, EDAC performs the *If required* steps, below; otherwise, EDAC proceeds with data validation. Changes and assumptions are documented.

If required:

- 2.2 Was the Data Table significantly altered? If yes, go to step 2.3. If no, go to step 2.6.
- 2.3 Return data in standardized format to the Provider for completion.
- 2.4 Receive modified data back from Provider.
- 2.5 Re-import data.

### 2.6 Data Validation

EDAC performs the final data validation for each Provider's data set: all missing data filled in; all field codes checked and standardized where appropriate. EDAC checks the ISP's provider name and FRN number using FCC's Commission Registration System (CORES) database.

<https://fjallfoss.fcc.gov/coresWeb/publicHome.do>

## 3. Data Processing

### 3.1, 3.2 GIS Data

EDAC creates and verifies Provider-specific GIS data, using ArcGIS 10 software and third-party data sets.

- New Mexico Road Centerline (NM RCL) data files [Geocoding; Primary Roads Data Set]
- NM Telephone Exchange Boundaries 911 [Census Blocks Processing]
- U.S. Census TIGER/Line shapefiles [Geocoding]
- TomTom MultiNet Road shapefiles [Geocoding]
- NAVTEQ Road data files [Geocoding]
- ESRI Road shapefiles [Geocoding]
- ESRI Cable Boundaries data file [Census Blocks Processing]
- Ancillary consistency checks include comparison with other data sources that are available through the New Mexico geospatial clearinghouse – Resource Geographic Information System (RGIS; <http://rgis.unm.edu>)
- Propagation model results

EDAC processes the GIS data according to the National Broadband Map Data Transfer Model V1.0.2.

#### Middle Mile Points

- ISPs provide the geographic coordinates for Middle Mile points. Those points are exported as shapefiles and a spatial join is performed against Census 2010 Blocks to obtain FULLFIPSID.
- Data sets are further processed by adding required fields based on the NTIA Data Model.



### Census Blocks

- ISP data were requested for the Census 2010 Blocks, rather than the Census 2000 Blocks.
- If an ISP provides the Census Block IDs, then those tables are spatially joined with the Census 2010 Data and the blocks are extracted. Then, the Census Blocks (Area < 2 sq mi) are extracted.
- If the ISP provides address-specific data, those addresses are geocoded against the New Mexico Road Centerline (NM RCL) address locator. Unmatched addresses are processed against third-party data sets, such as the TomTom MultiNet and NAVTEQ Road data, which were purchased by the State as a part of the NMBB project, and ESRI Road data. All of those matched records are appended together to obtain a single address data set. The address points are aggregated spatially to the Census Blocks, and the Census Blocks (Area < 2 sq mi) are extracted.
- If an ISP provides shapefiles of Census Blocks, EDAC verifies those to make sure they are less than 2 sq mi in area.
- If an ISP provides telephone exchange boundaries instead of addresses, then those boundaries are verified with the NM Telephone Exchange Boundaries 911 data set, and Census Blocks (Area < 2 sq mi) that lie within those boundaries are extracted. If an ISP provides the CO/RT locations, then a buffer of 1800 ft is drawn, and the Census Blocks (Area < 2 sq mi) that intersect with the buffer area are extracted.
- If an ISP provides service areas instead of addresses for Cable, then the service areas are verified with the ESRI Cable Boundaries data file. Census Blocks (Area < 2 sq mi) that lie within the boundaries are extracted.
- If an ISP does not provide data for this data-submittal round, data processed for the previous rounds are used for the current submittal.
- Data sets are further processed by adding required fields based on the NTIA Data Model.

### Road Segments

- If an ISP provides address-specific data, EDAC geocodes those points (using a process similar to that explained above in *Census Blocks*). The address points are aggregated spatially to Census Blocks, and the blocks with area greater than 2 sq mi (Area > 2 sq mi) are extracted. NM RCL roads within those Census Blocks are exported, and the geocoded address points are spatially joined with adjacent road segments within a distance of 25 ft (or 30 ft for rural areas). The road segments with joined address points are selected and exported.
- If an ISP provides road segment data with address ranges, any one of the address range values (TO/FROM) for the road is taken and the data are geocoded. Or, if no address ranges are provided, the address file is joined with the NM RCL roads, based on Street Name, City, and Postal Code and the matched records are extracted. This involves manual data processing.
- If an ISP provides Tiger/Line roads data, those roads are extracted from the U.S. Census Tiger/Line shapefile by joining them based on the TLID (Tiger/Line ID). NM RCL road data that match the Tiger/Line roads are exported.
- If an ISP provides Telephone Exchange Boundaries or CO/RT locations or Cable service area boundaries, road segments for these data sets are not processed due to uncertainty about the NMBB procedures for these cases. EDAC checks for ISP-provided address-specific data and, if those data are present, processes the data using the first-listed *Road Segments* step. Otherwise, those roads are not further processed.
- Data sets are further processed by adding required fields based on the NTIA Data Model.

### Community Anchor Institutions

- EDAC created an Anchor Geodatabase that has data for all the Community Anchor Institutions, such as Schools, Libraries, Health Care, Higher Education, Public Safety Facilities, Government Agencies, and Non-governmental Institutions throughout the State of New Mexico. These data were obtained from different sources, including the Public School Facilities Authority (PSFA), New Mexico State Library, Homeland Security Information Program (HSIP), and NM Resource Geographic Information System Program (RGIS).
- EDAC developed a Community Anchor Site Assessment (CASA) crowd-sourcing application to collect information about Institutions and their Broadband Internet Access in the State of New Mexico. These results are added to the Anchor Database after locations are validated against satellite and aerial imagery.
- The UNM Bureau of Business and Economic Research (BBER) created and conducted a digital-literacy survey to obtain non-governmental-organization (NGO) community support data. EDAC supplemented the Anchor Geodatabase with these NGO data.
- Broadband data provided by the ISPs are also included in the geodatabase. EDAC uses the third-party USAC (Universal Service Administrative Company) data set for broadband information for Schools and the NM State Library data set for broadband information for Libraries.
- The Anchor Geodatabase is further processed to meet the NTIA requirements. NCES IDs for schools, IPEDS IDs for higher education, and IMLS IDs for libraries are obtained from the respective Web sites and are joined with records in the geodatabase.
- Data sets are additionally processed by adding required fields based on the NTIA Data Model.

### Wireless

- If an ISP has multiple spectra, the provided polygon is duplicated for each spectrum and then appended together to obtain a single shapefile with stacked geometry.
- If an ISP provides only tower locations (address or coordinates) instead of shapefiles showing their wireless coverage, EDAC generates wireless coverage using SiteSync propagation modeling software. For this, we request additional information from the ISP, such as: Location (address or coordinates), Antenna pattern (omni-directional, 180, 120, 90, etc.), Transmit frequency (MHz), Transmit Antenna Gain (dBi), and Antenna elevation.
- If an ISP provides tower location (address or coordinates), transmit radius and no other above mentioned variables, those locations are mapped and a buffer is drawn with the transmit radius.
- Wireless-coverage polygons with area less than 0.125 sq mi, whether ISP-provided or modeled, are eliminated from the coverage, per NTIA specifications.
- If an ISP indicates providing Satellite services state-wide, a state boundary file is added to the database, processed per NTIA requirements.
- If an ISP (reseller) provides Satellite subscriber data, those addresses are geocoded and the Census Blocks in which the addresses fall are considered for the coverage area.
- Data sets are further processed by adding required fields based on the NTIA Data Model.

### Overview

- This set of notes applies to wire-line data, only.
- If an ISP provides the Subscriber Weighted Nominal (SWNOM) Speed of respective technology types for the counties it serves, those values are joined with the County boundary file from the U.S. Census Tiger/Line shapefiles.

- If an ISP provides the technology of transmission, number of subscribers, and the maximum advertised speed for the Counties it serves, the SWNOM Speed is calculated and the values are joined with the County boundaries shapefile.
- These county files from each ISP are appended together to obtain a statewide stacked geometry. Data are further processed by adding required fields based on the NTIA Data Model.

### **3.3, 3.4 GIS Data Verification, Updates, and Edits**

Processed data are developed as Provider-specific spreadsheet and GeoPDF products. As the first step in New Mexico's Provider feedback loop, EDAC places each Provider's products on the SFTP site and requests that Providers verify accuracy and identify needed edits and corrections. Six (6) ISPs responded to the verification request in the April 1, 2012 data submission cycle.

GIS and modeled data are updated and edited, based on Provider feedback, and modified data products (spreadsheet and GeoPDF) are delivered to the Provider through the SFTP site for final verification and to complete the feedback loop.

### **3.5 NTIA Geodatabase Preparation**

EDAC produces a final "clean" GIS data set from the processed and Provider-specific, versioned feature data sets, and then prepares the NTIA Geodatabase from these finalized GIS data. Crowd-sourced data were not used for preparation or validation.

### **3.6 NTIA Geodatabase Validation**

EDAC validates the geodatabase by performing the validation checks provided below and by running the geodatabase through the SBDD\_CheckSubmission tool. EDAC then assigns Quality Assurance/Quality Control (QA/QC) values.

- Repair Geometry
- Validate Topology
- Check Provider identification fields by Frequency tool and Summarize tool
- Check for Provider Name, Census Block, and Transmission Technology. Each ISP (Provider Name) should have only one Census Block per Transmission Technology.
- Check for Null values in Transmission Technology codes, PROVIDER\_TYPE, FULLFIPSID, STATEFIPS, COUNTYFIPS, TRACT, BLOCKID, GEOUNITYTYPE, STATECOUNTYFIPS fields
- Check for Null values in OWNERSHIP, BHCAPACITY, BHTYPE, TRANSTECH, ANCHORNAME, ADDRESS (BLDGNR, STREETNAME), CITY, ZIP5, STATE, Latitude, Longitude fields
- Check Maximum advertised and typical down/upload speed fields for null values and for valid domain values: MAXADDOWN/TYPDOWN < MAXADUP/TYPUP; MAXADDOWN < '0' OR MAXADDOWN > '11'
- BHCAPACITY <0 and >9, BHTYPE <0 and >4, CAICAT <1 and >7
- Check for SPECTRUM values <1 and >10
- Speed Tiers:
  - DSL download speed tier: if 7 or higher, contact ISP to verify
  - Cable Modem – DOCSIS 3.0 should not be 7 or lower
  - Cable Modem – Other should not be 9 or higher
  - Fixed Wireless download speed tier should not be 8 or higher

## **4. NMBB Report and Submittal**

### **4.1 Finalized NTIA Geodatabase and Metadata**

EDAC finalizes the Geodatabase per NTIA standards (National Broadband Map Data Transfer Model V1.0.2) and creates the associated metadata.

### **4.2 NMBB Program Manager**

The NMBB Program Manager receives the finalized Geodatabase through the SFTP site and approves the files for submittal to NTIA.

EDAC completes and delivers all files to the NMBB Program Manager, as required by the Program. Files include correspondence logs with NM Providers, documentation for Web mapping activities, and the Provider-specific Data Processing Tracking Form.

### **4.3 NTIA Submittal**

The Geodatabase and required files (data transmittal memorandum, Provider data request template [not a required file], data package spreadsheet, check-submission receipt, methodology, and changes and corrections) are uploaded, using the FCC/NTIA SFTP site.

### **4.4 NMBB Map Layers**

Following the NTIA submittal, EDAC creates GIS map layers from the Geodatabase and publishes them to the New Mexico Broadband Program Mapping site, [www.nmbbmapping.org/mapping/](http://www.nmbbmapping.org/mapping/).

### **4.5 Response: NTIA Submission Summary**

NM DoIT and EDAC developed a document template to respond to the NTIA Submission Summary, both to address NTIA-identified issues or gaps and to request clarification and additional information. New Mexico responds within one week of receiving NTIA's Submission Summary.

## **NMBB System Security**

### **System Security**

The NM Broadband Server is a fully patched Windows Server 2008. The server is protected by Symantec Endpoint Protection and a double firewall.

The first layer of firewall protection is a Cisco hardware firewall that protects the Server from any intrusion from outside the EDAC network. This firewall only allows connections on Ports 80 and 22.

- Port 80 allows Web browsing.
- Port 22 allows Secure FTP. SFTP service is fully encrypted with SHA1 stored passwords.

The Windows software firewall is configured to allow access on Ports 80, 22, 443, and 3389.

- Port 443 gives EDAC developers the ability to configure ArcGIS Server from within the EDAC network.
- Port 3389 gives EDAC system administrators the ability to configure the base Windows server from within the EDAC network.

## Server Connections

Connect to the Server from the outside:

- HTTP: No authentication (simple Web browsing).
- SFTP: Authentication required and fully encrypted.

Connect to the Server from within the EDAC network:

- HTTPS: Authentication required and fully encrypted.
- RDP: Authentication required and fully encrypted.
- SMB: Port 445, Windows file-share port.

## Virtual Machine and Networked Drive Back-ups

The NMBB Virtual Machine (VM) is a dedicated server.

Back-up: Development Networked Drive (not published)

- Daily: A differential back-up to a tape server is performed; the tape server is connected to a secure tape library.
- Friday/Weekend: A full back-up of the networked drive is performed to the secure tape server.

Back-up: Virtual Machine (published)

- Daily: The entire VM is backed up by VDR (VMware Data Recovery [application]) to a secure, self-contained data store.
- Weekly: The entire VM is backed up to a TrueCrypt volume in remote storage.

## Physical Security

NM Broadband Server physical security is accomplished through:

- Controlled-environment floor space in a locked, code-protected room for system servers, and
- An uninterrupted power supply (UPS).

## Lessons Learned

### Provider Feedback Loop

EDAC identified and implemented several measures for more effective data collection during the 2011 data submittals. These included:

- Developing and formalizing an interaction process between data providers and EDAC.
- Modifying the data request template, based on the updated NTIA data model.
- Setting deadlines for receiving data from ISPs. This allowed EDAC sufficient time for processing and submitting feedback maps to ISPs for their verification.

These measures have been successful with respect to efficient data processing and validation and for ISP engagement. The NMBB Program continues to evaluate or expand upon these measures.

### Data Validation and Processing

EDAC continued to address issues regarding data validation and processing. These included:

- Evaluating and updating data validation procedures to meet requirements for the data model.
- Implementing, testing, and verifying propagation models for Wireless data.
- Exploring propagation models for processing Satellite data.

## NMBB Web Map

The New Mexico Broadband Map ([www.nmbbmapping.org/mapping/](http://www.nmbbmapping.org/mapping/)) is developed as part of the NMBB Program for the State of New Mexico. This Web map displays all of the processed ISP broadband data that are submitted to NTIA for the National Broadband Map, and the processed statewide satellite-service data.

Figure 2 (below) is a screen-capture image of the New Mexico Broadband Map V 2.0 with Data Update: 1 October 2011 [map data are updated following each NTIA data submittal]. Map layers for DSL, Cable, and Copper Wire broadband-coverage are displayed with Tribal Land Boundaries and the Streets base map. Fiber, Fixed Wireless, Mobile Wireless, and Satellite layers are not displayed. Tools include: layer selection; base map selection; dynamic legend; slider-bar and custom zoom; drag-and-drop and directional pan; full, previous, and next extent; identify; find address; scale bar; and print map. Additionally, the mapping site provides a feedback tool, help (online user guide), program information, and New Mexico's disclaimer.

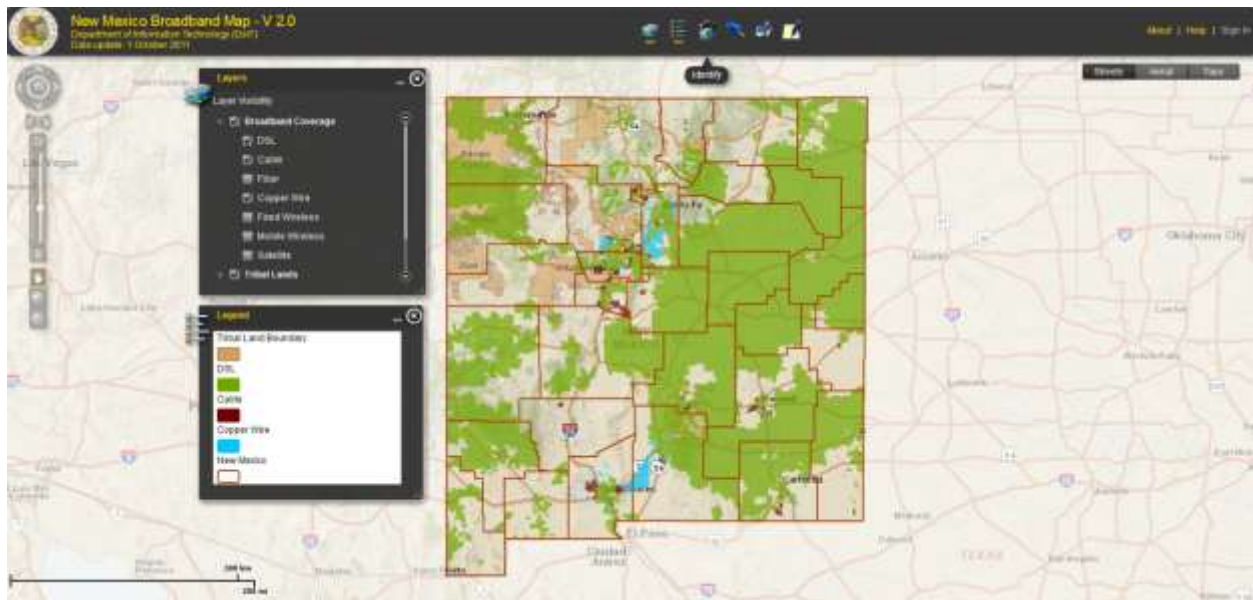


Figure 2 NMBB Program: New Mexico Broadband Map, [www.nmbbmapping.org/mapping/](http://www.nmbbmapping.org/mapping/); accessed 26 March 2012

## Appendix A: Table of New Mexico Internet Service Providers

Internet Service Providers listed in black text were participating providers in NTIA Data Round 5. Providers listed in blue text did not respond to NTIA Data Round 5 data requests.

| Identified New Mexico Internet Service Providers: NTIA Data Submittal, April 1, 2012 |  |
|--|--|
| 360networks (USA) Inc.   | US Cable   |
| Agave Broadband LLC  | Valley Telecom Group<br>(Copper Valley Telephone, Inc.)            |
| AT&T Corp, Inc.  | Valley Telecom Group<br>(Valley Telephone Cooperative, Inc.)       |
| AT&T Mobility LLC  | Verizon Wireless   |
| Baca Valley Telephone Company, Inc.  | Windstream Communications SouthWest                                |
| Baja Broadband   | WNM Communications   |
| Cable One  | Yucca Telecom (Roosevelt County Rural Telephone Cooperative, Inc.) |
| CenturyLink  | Yucca Telecom<br>(Yucca Telecommunication Systems, Inc.)           |
| Comcast  | WildBlue Communications, Inc.                                      |
| Cricket Communications, Inc.   |  |
| Cyber Mesa Telecom   | Action INTELEX   |
| Dell Telephone Cooperative, Inc.   | AmigoNet   |
| DIECA Communications, Inc.<br>(Covad Communications Company)                         | Azulstar, Inc.   |
| ENMR Plateau Telecommunications  | BlackRock Networks, LLC  |
| Frontier Navajo Communications<br>(Navajo Communications Company, Inc.)              | Brainstorm Internet  |
| Higher-Speed Internet, LLC   | CityLink Fiber Holdings, LLC                                       |
| Kit Carson Electric  | CNSP Internet  |
| La Jicarita Rural Telephone Cooperative  | Desertgate Internet  |
| Leaco Rural Telephone Cooperative  | La Canada Wireless Corporation                                     |
| Level 3 Communications, LLC  | La Tierra Communications, Inc.                                     |
| MATI Networks (Mescalero Apache Telecom, Inc.)                                       | MetTel   |
| Penasco Valley Telecommunications  | Rio Grande Unwired   |
| Plateau Telecommunications, Inc.   | RioLink, LTD   |
| PTCI (Panhandle Telephone Cooperative, Inc.)   | SCS Connect  |
| PVT Networks   | SentivaNet   |
| Sacred Wind Communications, Inc.   | Southwest Cyberport  |
| Sierra Communications<br>(a subsidiary of Baca Valley Telephone)                     | Spinn.Net  |
| Southwestern Wireless  | Straight Shooting Tech   |
| Sprint   | TaosNet, LLC   |
| Suddenlink Communications  | Tewa Communications  |
| StarBand Communications, Inc.( Spacenet, Inc.)                                       | Transworld   |
| T-Mobile   | Trilogy  |
| Time Warner Cable  | TriNet Communications  |
| Tularosa Communications, Inc.  | UPHI   |
| TW Telecom of New Mexico, LLC  | Virtual Los Alamos   |



## Appendix B: ISP-Data Verification and Validation

The NMBB Program corresponds by with Internet Service Providers to request feedback on and corrections to their submitted data. The following e-mail chain is an example of ISP feedback to their NMBB map and data correction resulting from comparison of Round 5 data with Round 4 data.

**Subject:** NMBB Program: Feedback - Spring 2012 (Round 5) - Comcast

<ISP Contact>,

The feedback maps for the April 1, 2012, fifth round of deliverables to NTIA for New Mexico Broadband Mapping Program are now complete. See the attached **Feedback.zip** file which contains maps of your data in a PDF format along with a readme describing the contents of the file. These maps and all previous feedback maps are available on your FTP account in a folder named Feedback. Should you need your FTP account information, please email <name> (<e-mail address>).

### Verification/ Validation Request

Verify and validate the data provided by your organization to the NMBB program. For the ISPs who provide fixed wireless services and submitted their wireless tower information, we have generated coverage area using SiteSync propagation modeling software. We would encourage you to take a closer look at the coverage and provide your comments. The NMBB Program values your suggestions and comments regarding the feedback maps, feel free to email your comments. Please provide your feedback by **March 23, 2012**. Otherwise, the data portrayed on the map are assumed to be accurate and submitted to NTIA as such.

Sincerely,  
<NMBB Analyst>

### **ISP Contact to NMBB Analyst:**

The circles on the attached map indicate areas that incorrectly show us offering broadband service (Internet Access).

### **NMBB Analyst to ISP Contact:**

Thank you for your review. The feedback map is based on the data provided by Comcast for the April 2012 submittal and I would like to confirm details about the data sent for Round 5.

For Fall 2011 (round 4), we generated a map, which you reviewed and confirmed was accurate on 9/14/2011 (I've attached a copy of this map).

The map displayed Comcast services in communities of  
Taos  
Las Vegas  
Grants  
Socorro  
Hobbs

For Spring 2012 (round 5), we have generated a similar map, which you reviewed and circled the above mentioned communities as being areas in which Comcast does NOT provide cable services. Would you please confirm that you no longer provide services in those communities.

Looking forward to hear from you. Thank you.



**ISP Contact:**

I assumed in 2011 that Broadband meant video. In talking with <other contact> this week he told me it's not just video, but would need to include internet. These areas do not have Comcast Internet.

Sorry for my confusion on this.

**NMBB Analyst:**

Thank you for the clarification. We will make the changes as suggested. Please, make the distinction for video and internet services in the next round of data submission, and we will process that accordingly thereby eliminating these discrepancies for the next NTIA Submittal.

Again, thank you for your careful evaluation of the feedback we've provided.

**NMBB Analyst:**

Looking at the previous feedback map, we realized that there are more number of areas with no broadband internet from Comcast are circled, which are not for this round. Would you please verify whether Comcast provide broadband internet services in the following areas?

I have uploaded a zip file containing shapefile of Census Blocks to the FTP site (because file size exceeds e-mail limit), if this helps in verification.

Raton  
Cimarron  
Jemez Springs  
Thoreau  
Tucumcari  
Gallup  
Deming

Looking forward to hear from you.  
Thank you for your time.

**ISP Contact:**

Here is the information you requested:

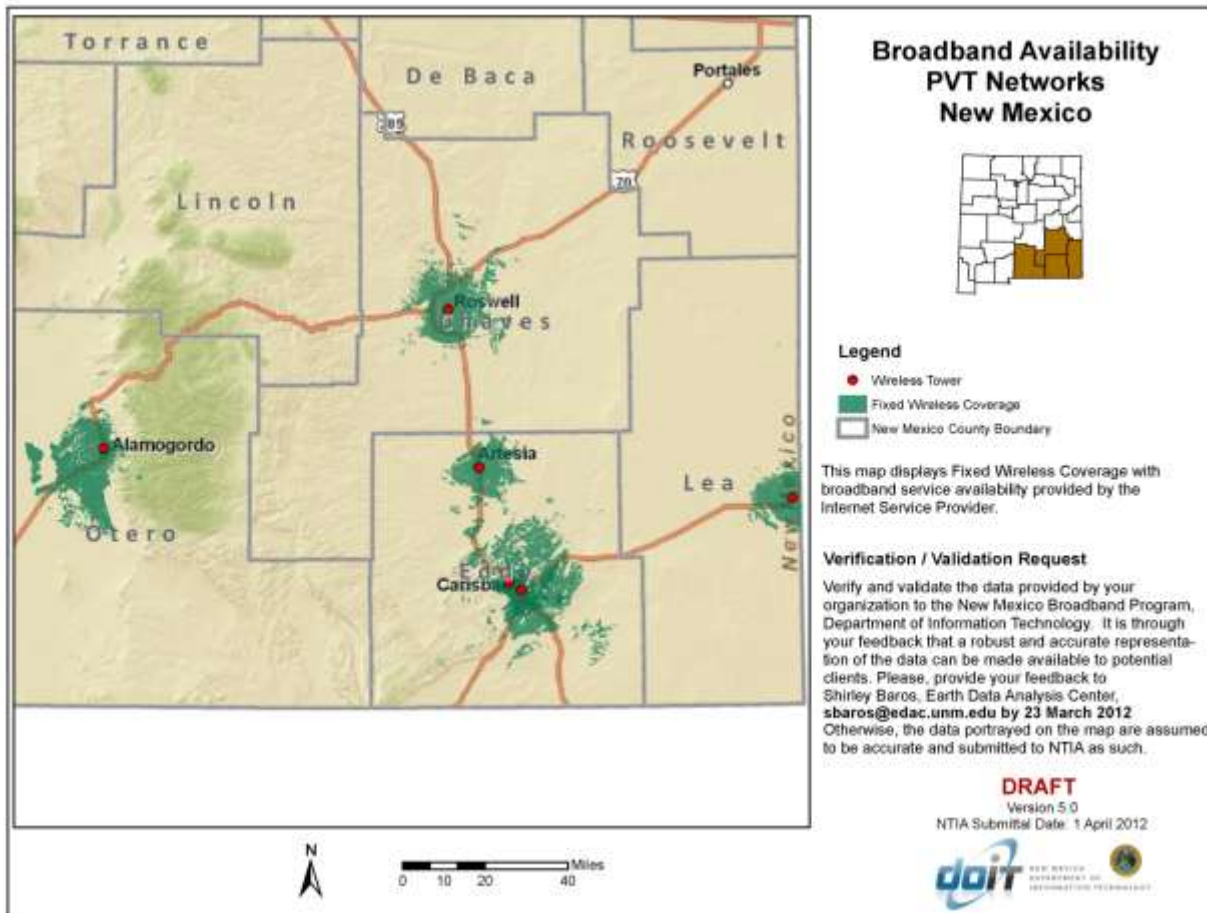
Raton – Does not have Comcast Broadband Internet  
Cimarron – Does not have Comcast Broadband Internet  
Jemez Springs – Does not have Comcast Broadband Internet  
Thoreau – Does not have Comcast Broadband Internet  
Tucumcari – Does not have Comcast Broadband Internet  
Gallup – Has Comcast Broadband Internet  
Deming - Has Comcast Broadband Internet

**NMBB Analyst:**

Thank you for your quick response. We'll make changes to the data accordingly.  
We appreciate your time and cooperation.

## Appendix C: Feedback and Propagation Map

This map displays Fixed Wireless coverage with broadband service availability provided by the Internet Service Provider. Fixed Wireless coverage was generated with a propagation model.



## Appendix D: Table of Abbreviations and Acronyms

|            |   |
|------------|---|
| BB         | broadband   |
| BBER       | [UNM] Bureau of Business and Economic Research                                      |
| CAD        | Computer-aided Design   |
| CO/RT      | Central Office/Rural Terminal   |
| DBA        | Doing Business As   |
| dBi        | decibel isotropic   |
| DoIT       | [NM] Department of Information Technology   |
| DSL        | Digital Subscriber Line   |
| EDAC       | [UNM] Earth Data Analysis Center  |
| FCC        | Federal Communications Commission   |
| FGDC       | Federal Geographic Data Committee   |
| FRN        | FCC Registration Number   |
| ft         | foot  |
| FTP        | File Transfer Protocol  |
| GDB, gdb   | Geodatabase; Geodatabase file extension   |
| GIS        | Geographic Information Systems  |
| HSIP       | Homeland Security Information Program   |
| HTTP       | Hypertext Transfer Protocol   |
| HTTPS      | Hypertext Transfer Protocol Secure  |
| ID         | [unique] identifier   |
| IMLS       | Institute of Museum and Library Services  |
| IPEDS      | Integrated Postsecondary Education Data System                                      |
| ISP        | Internet Service Provider   |
| MHz        | megahertz   |
| NCES       | National Center for Education Statistics  |
| NDA        | Non-Disclosure Agreement  |
| NGO        | Non-governmental Organization   |
| NM         | New Mexico, State of New Mexico   |
| NMBB       | New Mexico Broadband [Program]  |
| NM DoIT    | New Mexico Department of Information Technology                                     |
| NTIA       | National Telecommunications and Information Administration                          |
| PDF, pdf   | [Adobe] Portable Document Format and file extension                                 |
| PSFA       | [NM] Public School Facilities Authority   |
| QA/QC      | Quality Assurance/Quality Control   |
| RCL        | [NM] Road Centerlines   |
| RDP        | Remote Desktop Protocol   |
| RGIS       | [NM] Resource Geographic Information System   |
| SBI        | State Broadband Initiative  |
| SFTP       | Secure File Transfer Protocol   |
| SHA1, sha1 | Secure Hash Algorithm 1   |
| SMB        | Server Message Block  |
| sq mi      | square mile(s)  |
| SWNOM      | Subscriber Weighted Nominal [Speed]   |
| TIGER      | [U.S. Census] Topologically Integrated Geographic Encoding and Referencing (system) |

|          |   |
|----------|---|
| TXT, txt | Text file extension                                     |
| UNM EDAC | The University of New Mexico Earth Data Analysis Center |
| UPS      | uninterrupted power supply                              |
| USAC     | Universal Service Administrative Company                |
| VDR      | VMware Data Recovery (application)                      |
| VM       | Virtual Machine   |
| Web      | World Wide Web  |
| XLS, xls | Microsoft Excel file extension                          |
| ZIP, zip | Zipped file extension                                   |