

**OFFICIAL OCTOBER 2011 UPDATE SUBMISSION TO  
THE NATIONAL TELECOMMUNICATIONS AND INFORMATION  
ADMINISTRATION UNDER THE  
STATE BROADBAND INITIATIVE GRANT PROGRAM FOR THE  
STATE OF IOWA**

---



**October 1, 2011**

---

## TABLE OF CONTENTS

Iowa Cover Letter.....	3
Data Acquisition: Iowa Community Anchor Institutions Methodology.....	7
SBI Data Submission Methodology.....	8
Provider Changes and Corrections for October 2011 .....	9
Iowa Field Validation Methodology.....	12
Data Submission and Coverage Estimation of Non-Participating Provider .....	14
Accuracy and Verification: Provider Validation Methodology .....	19
Wireless Methodology.....	21
Broadband Inquiries Methodology .....	22
BroadbandStat Methodology .....	23
Speed Test Methodology .....	24
Broadband Provider Log .....	26

## IOWA COVER LETTER

October 1, 2011

Ms. Anne W. Neville  
SBI Grant Program Director  
National Telecommunications and Information Administration  
U.S. Department of Commerce  
1401 Constitution Avenue, NW Room 4716  
Washington, DC 20230

Dear Ms. Neville:

As the State Broadband Designated Entity, in partnership with Iowa Department of Economic Development, please accept this submission from Connected Nation on behalf of the state of Iowa's State Broadband Initiative (SBI) Grant Program, known as Connect Iowa.

These artifacts should be found to be compliant with the October 1, 2011, deadline for the semi-annual data update and in accordance with the terms of the July 1, 2009, Notice of Funds Availability (NOFA) and all subsequent clarifications pertaining to delivery of state-level mapping of broadband service availability. This packet includes:

### ***Inventory of Deliverables, Connect Iowa: October 1, 2011***

<u>NOFA Requirement</u>	<u>Data Transfer Model</u>	<u>Data Description</u>
Appendix A: 1(a)(i)	BB_Service_CensusBlock	Broadband Service Availability of Facilities-Based Providers in Census Blocks of No Greater Than Two Square Miles in Area
Appendix A: 1(a)(ii)	BB_Service_RoadSegment	Broadband Service Availability of Facilities-Based Providers by Road Segment in Census Blocks Larger in Area Than Two Square Miles
Appendix A: 1(b)	BB_Service_Wireless	Broadband Service Availability of Wireless Services Not Provided to a Specific Address
Appendix A: 3(b)	BB_ConnectionPoint_MiddleMile	Broadband Service Infrastructure Middle-Mile and Backbone Interconnection Points
Appendix A: 4	BB_Service_CAInstitutions	Community Anchor Institutions-Listing

Appendix A: 4	n/a	Community Anchor Institutions-Narratives
VII.A.1(a)	n/a	Accuracy and Verification Report
n/a	DataPackage.xlsx	Worksheets of Contact Information, Record Count, and Provider Summary Table
n/a	n/a	List of Changes and Corrections to the Dataset
n/a	n/a	Non-Participating Provider Narratives
n/a	n/a	Broadband Provider Roster and Participation Status

In addition, this data update submission should be found to be compliant with the additional program requirements instituted by the National Telecommunications and Information Administration since the time of the April 2011 SBI data submission for the Connect Iowa program. Specifically, these new requirements are:

#### **SBI Data Transfer Model**

The submission of the broadband dataset for October 1, 2011, is contained within the SBI Data Transfer Model as released on the Grantee Workspace on June 30, 2011. All efforts have been made to comply with formatting, domain, and metadata requirements to include as much information on each provider as possible.

#### **Additional Submission Guidance**

This submission also includes a list of changes and corrections made to the dataset between the April 2011 submission and the October 2011 submission. This represents a summary of why data displays and/or supplied speeds, etc. are different from the previous submission. Changes can include upgrades to infrastructure to allow for higher throughput speeds for customers, an expansion of the service area (e.g. additional fixed wireless towers, recently activated DSLAMs, etc.), or a new provider in the marketplace. Corrections can include revisions to speed tier information that was previously reported incorrectly or the addition of a previously existing provider that has not yet been submitted in a semi-annual dataset.

Another addition in this submission is a narrative describing the data and coverage estimation of a non-participating provider. While Connect Iowa continues outreach to all providers prior to each submission period, the need to submit broadband service data for all providers regardless of their participation is evident as the SBI program continues into this fourth round of data submissions. The submission of this estimated broadband service area for providers that have not supplied data to Connect Iowa is essential in being able to portray a more accurate depiction of the current broadband landscape.

This October 2011 semi-annual data update under the State Broadband Initiative Grant Program continues to demonstrate our dedication to implementing the joint purposes of the Recovery Act and the Broadband Data Improvement Act (BDIA) by gathering comprehensive and accurate state-

level broadband mapping data, developing state-level broadband maps, aiding in the development and maintenance of the National Broadband Map, and undertaking statewide initiatives for broadband planning.

### ***Broadband Service Availability — Provider Outreach and Verification***

This data update submission under the SBI program includes datasets for approximately 96.08 percent of the Iowa provider community, or 196 of 204 total providers. There are 195 participating providers and 1 additional non-participating provider whose estimated coverage areas have been submitted. Of the 195 participating providers, 48 supplied an update to their network or coverage area(s), while 144 have reported no change. The remaining 3 represent providers who previously supplied data but were non-responsive in the October 2011 update effort; therefore their previous dataset is being put forward as part of this compilation. A complete roster by provider depicting participation status and contact record is contained herein. Of the 8 providers that are not represented in the attached datasets, 6 have refused to participate in the voluntary program or were non-responsive to multiple contact attempts, and 2 providers are currently in some form of progress toward data submission but were not able to submit coverage areas at the time of this submission.

As the aforementioned roster and attached methodology documentation will attest, it is the collective opinion of the Connect Iowa principals that all commercially reasonable efforts were made to account for 100 percent of the known Iowa broadband provider community, pursuant to this semi-annual data update submission.

Connect Iowa has also continued to perform broadband verification activities through several means. In addition to confirmation of service area(s) by each provider, Connect Iowa conducts field validation efforts. To date, 94 (46.08 percent) providers have been validated through field verification activities. Additional details on verification activities are contained within the Field Validation Methodology.

The Connect Iowa website, [www.connectiowa.org](http://www.connectiowa.org), continues to serve a prominent role in the outreach and data collection effort. This program asset provides a way for the general public to participate in the process by offering interactive tools for users to test their connection speed, submit broadband inquiries, or contact a program representative.

As an indicator of stakeholder penetration, the Connect Iowa website encountered 2,933 unique visits during this reporting period (17,710 total to date for the life of the grant awarded on January 1, 2010). Additionally, this pronounced Web activity netted 17 broadband inquiries over this same reporting period (190 grant inception to date). The website also provides the BroadbandStat application, which allows the consumer to confirm or dispute the coverage represented on the broadband inventory map. These consumer-initiated actions are facilitated through the Connect Iowa website and the Connect Iowa interactive mapping tool (BroadbandStat) that offer the citizens the vehicles to provide information regarding availability in their respective service area, either in affirmation or contest of the reported data represented in the Connect Iowa mapping artifacts. Since the initial data collection and release of corresponding maps, feedback in the form of

broadband inquiries has allowed Connected Nation to identify additional areas that are in need of field validation, which is scheduled as soon as possible.

### ***Community Anchor Institutions***

Connect Iowa has established an ongoing mechanism for gathering data on the location and broadband connectivity of Community Anchor Institutions (CAI), in accordance with the data requirements of the SBI NOFA Technical Appendix.

Outreach was conducted during this data update reporting period by Connect Iowa to continue identification of existing, centralized sources for CAI connectivity data. Connect Iowa is coordinating closely with our new client within the Iowa Department of Economic Development to identify new department heads within the state who can assist our program with outreach to all CAI sectors. Additionally, outreach was coordinated to distribute a CAI survey to institutions throughout the state through multiple methods including a customized online survey available on the Connect Iowa website. Connect Iowa will continue to build upon these new relationships being developed over the coming months and utilize its contacts throughout the state to collect data and raise awareness of this project.

During this reporting period a Connect Iowa CAI newsletter has been drafted to assist with outreach and highlight the virtual health technology innovations taking place at Iowa Health-Des Moines. From our work in Iowa, as well as other states, we recognize the great value of this data to future collaboration efforts within the state as well as its value to the National Broadband Map. We plan to continue to bring best practices to the Connect Iowa efforts, along with an investment of both human and technical resources required to reach our goal of increasing the data that is secured and reported as part of this process.

The Connect Iowa program exists to improve data on the deployment and adoption of broadband services and to assist in the extension of broadband technology across all regions of the great state of Iowa, as well as the United States through contribution to the National Broadband Map. We look forward to the continuing work ahead.

Respectfully submitted,

A handwritten signature in blue ink, appearing to read 'Tom Ferree', written over a light blue circular stamp.

Thomas W. Ferree  
Chief Operating Officer  
Connected Nation, Inc.

## **DATA ACQUISITION: IOWA COMMUNITY ANCHOR INSTITUTIONS METHODOLOGY**

In this fourth reporting period of the SBI, Connect Iowa, working in close coordination with the state of Iowa, has established an ongoing mechanism for gathering data on the location and broadband connectivity of Community Anchor Institutions (CAI), in accordance with the data requirements of the SBI NOFA Technical Appendix. During this reporting period Connect Iowa has continued to focus efforts on conducting outreach and raising awareness of this important project.

Connect Iowa has continued to identify and process CAI data obtained through an ongoing statewide outreach campaign. Physical address information continues to be augmented through manual sourcing and geocoded by Connect Iowa through ESRI ArcGIS software.

Connect Iowa continues to utilize a customized online survey hosted through SurveyMonkey, with a landing page on the Connect Iowa website that was developed during the first reporting period. This survey, in combination with a customized data-gathering spreadsheet, was distributed to a targeted list of CAI throughout the state. Connect Iowa will continue to use these data-gathering tools for future targeted outreach efforts throughout the coming months leading up to the next reporting period. These materials are customized to fit the CAI categories as defined in the SBI NOFA.

The survey can be accessed at this link using the following password:

[http://connectiowa.org/mapping/Community\\_Anchor\\_Institution\\_Data\\_Collection.php](http://connectiowa.org/mapping/Community_Anchor_Institution_Data_Collection.php)

Password: CAI\_IA\_3654

Connect Iowa and the state of Iowa have worked closely together during this reporting period to conduct research as part of an ongoing process to identify existing, centralized sources for CAI connectivity data. During this reporting period Connect Iowa conducted an extensive CAI overview to engage a new client contact with the Iowa Department of Economic Development. As a result of this overview, a plan has been developed to engage new department head appointees within the state who represent key CAI sectors. Developing these relationships with these new appointees will be key to assisting with data-gathering efforts leading up to the next submission.

Additionally, Connect Iowa has an ongoing mission to educate CAI throughout the state on the importance of participating in the project. Participation by these institutions will raise awareness about the importance of broadband connectivity and the need to report the requested data for inclusion on the National Broadband Map. During this reporting period Connect Iowa developed and distributed a CAI newsletter to CAI contacts throughout the state across all CAI sectors. This newsletter highlights the CAI, Iowa Health - Des Moines and encourages institutions to share their data by participating in the CAI online survey. This newsletter will continue to be utilized for outreach, will be made available on the CAI page of the Connect Iowa website, and will be updated over the next reporting period.

The greatest challenge with collecting this data continues to be the difficulty in securing CAI broadband connectivity data. Connect Iowa will continue its ongoing work with the state of Iowa and continue to educate and coordinate with key organization contacts in an effort to raise awareness of this project among CAI. The Iowa Department of Economic Development will continue to be briefed on the current CAI data and provided information so it can assist with outreach and promotion within the state.

A CAI summary of all processed and submitted data is provided below:

CAI Type	Total	Physical Address	Lat/Long	Technology of Transmission	Download Speed	Upload Speed
K-12	1,851	1,851	1,851	119	119	122
Libraries	562	562	562	313	399	232
Healthcare	143	143	143	40	40	39
Public Safety	1,175	1,175	1,174	72	64	65
Higher Ed Institutions	77	77	77	30	30	30
Other Government	706	706	706	320	265	299
Other Non-Government	3	3	3	3	3	3
Total	4,517	4,517	4,516	897	920	790

## SBI DATA SUBMISSION METHODOLOGY

The submission of the broadband dataset for October 1, 2011, is contained within the SBI Data Transfer Model and additional components as released on the Grantee Workspace on June 30, 2011. Connected Nation has reviewed all literature that relates to the release and use of this data transfer model and recognizes that it does not replace or dictate how data is stored, processed, or displayed for the state, as it is meant primarily as a means to transfer the broadband data from all states and territories and populate the National Broadband Map in a seamless fashion. Guidance from the Technical Mapping Guide, as released on the Grantee Workspace on March 24, 2011, was also followed to ensure the completeness and validity of the submission through completion steps and checklists, completing the DataPackage spreadsheet, uploading broadband datasets into the Data Transfer Model, and checking the dataset using the SBDD\_CheckSubmission receipt process.

As part of the ongoing review and analysis process, NTIA has requested further information in the submission of the DataPackage spreadsheet. In addition to the information on providers whose coverage and accompanying attributes are submitted in the SBI Data Transfer Model, information on other providers that are considered to be non-viable is also included in the DataPackage. Providers deemed non-viable that have been excluded from continued outreach may have been eliminated for reasons such as (i) the company offers Internet service but at speeds below the current definition of broadband; (ii) the company was listed in advertisements as a broadband provider, but is actually a network solution or consulting firm, etc.; (iii) the company may build or install network infrastructure, but does not actually provide the broadband service to consumers; and (iv) the company has gone out of business. The submitted DataPackage includes any relevant information that has been obtained through the course of due diligence and/or direct provider



outreach, such as a Federal Registration Number (if applicable), the company's URL, the existence of an executed Nondisclosure Agreement, and brief notations regarding the status of the company. In addition to the methodologies contained herein, as well as the DataPackage.xls containing contact information, the data dictionary, and a provider summary table, the following feature classes are submitted within the SBI Data Transfer Model for the state of Iowa.

### ***Inventory of Deliverables, Connect Iowa: October 1, 2011***

<u>NOFA Requirement</u>	<u>Data Transfer Model</u>	<u>Data Description</u>
Appendix A: 1(a)(i)	BB_Service_CensusBlock	Broadband Service Availability of Facilities-Based Providers in Census Blocks of No Greater Than Two Square Miles in Area.
Appendix A: 1(a)(ii)	BB_Service_RoadSegment	Broadband Service Availability of Facilities-Based Providers by Road Segment in Census Blocks Larger in Area Than Two Square Miles.
Appendix A: 1(b)	BB_Service_Wireless	Broadband Service Availability of Wireless Services Not Provided to a Specific Address.
Appendix A: 3(b)	BB_ConnectionPoint_MiddleMile	Broadband Service Infrastructure Middle-Mile and Backbone Interconnection Points.
Appendix A: 4	BB_Service_CAIstitutions	Community Anchor Institutions-Listing.

The provider data collected by Connected Nation on behalf of the state of Iowa have been formatted per the given specifications and uploaded into the appropriate feature classes of the SBI Data Transfer Model. Wireline availability is contained within census blocks and road segments, wireless availability is contained as polygons of coverage areas, and middle-mile connections and community anchor institutions are contained as point data. All speed data is contained at the census block, road segment, or wireless polygon level of availability. All efforts have been made to comply with formatting, domain, and metadata requirements to include as much information as possible.

Connected Nation has continued outreach to satellite providers on their availability, technology, and speed information, but granular coverage is not yet available. Submitted within the wireless feature class are the satellite companies providing service to Iowa as a polygon of the state boundary. Efforts will continue to collect, process, or otherwise create more granular satellite data based on availability analyses and guidance received from NTIA.

## **PROVIDER CHANGES AND CORRECTIONS FOR OCTOBER 2011**

As requested by the SBI Program Office, a listing of the changes and/or corrections to the datasets between the April 2011 and October 2011 submissions is included in this narrative. This information is presented in this section as well as in the Broadband Provider Log. Changes to the

data include expansion of service area(s), activation of new wireless towers, and upgrades to the network to provide higher download speeds to consumers. Corrections to the dataset include the addition of previously existing providers whose coverage has never been submitted, revision of coverage or speed information that was incorrect, and any other items that were misrepresented in the April 2011 dataset.

### Changes

- Alliance Communications Cooperative, Inc. (fiber): Provider expanded fiber service area.
- Alpine Communications, LC (DSL): Provider upgraded infrastructure and can now provide speed tier 7 download speeds.
- Atkins Telephone Company (fiber): Provider upgraded infrastructure and can now offer speed tier 8 download speeds.
- Aventure Communications (fixed wireless): Provider expanded fixed wireless service area.
- Baldwin Nashville Telephone Company, Inc. (fiber): Provider upgraded infrastructure and can now provide fiber broadband to parts of its service area.
- Bernard Telephone Company, Inc. (fixed wireless): Provider expanded a portion of its fixed wireless coverage area.
- Bernard Telephone Company, Inc. (fiber): Provider updated infrastructure and can now provide fiber broadband to its entire service area.
- Cedar Falls Utilities (fiber): Provider expanded fiber service area.
- Colo Telephone Company (fiber): Provider upgraded infrastructure and can now offer speed tier 7 download speeds.
- Communications 1 Network, Inc. (fiber): Provider upgraded infrastructure and can now offer speed tier 10 download speeds.
- Corn Belt Telephone Company (fiber): Provider expanded its fiber service area.
- Farmers & Merchants Mutual Telephone Company (fixed wireless): Provider has two new fixed wireless towers in operation.
- Farmers Cooperative Telephone Company-Dysart (DSL): Provider expanded its DSL service area.
- Frontier Communications Corporation (DSL): Provider expanded coverage area.
- Grand Mound Cooperative Telephone Association (fiber): Provider expanded its fiber service area.
- Grand River Mutual Telephone Corporation (DSL): Provider expanded its DSL service area.
- Loganet (fixed wireless): New fixed wireless tower in operation.
- Lone Rock Cooperative Telephone Company (DSL): Provider upgraded speeds but they fell within the same speed tier, so provider still offers speed tier 5 download speeds.
- MidIowa Net (fixed wireless): Provider sent frequency change, but it fell within the previously submitted frequency range that was included in the April 2011 submission.
- Miles Cooperative Telephone Association (DSL): Provider upgraded infrastructure and can now offer speed tier 5 download speeds.
- NetConX, Inc. (fixed wireless): New wireless tower in operation.

- New Ulm Telecom, Inc. (DSL): Provider upgraded infrastructure and can now offer speed tier 5 download speeds.
- North English Cooperative Telephone Company (DSL): Provider upgraded infrastructure and can now offer speed tier 4 download speeds.
- Panora Communications Cooperative (fiber): Provider expanded its fiber service area while also upgrading its infrastructure, and can now offer speed tier 7 download speeds.
- Partner Communications Cooperative (fiber): Provider upgraded infrastructure and can now provide fiber broadband to portions of its service area.
- Preston Telephone Company (DSL): Provider upgraded infrastructure and can now offer speed tier 6 download speeds.
- SpeedNet, LLC (fixed wireless): Four new fixed wireless towers in operation.
- West Liberty Telephone Company (DSL): Provider upgraded speeds but it fell within the same speed tier, so provider still offers speed tier 5 download speeds.
- West Liberty Telephone Company (fixed wireless): New wireless tower in operation.
- Windstream Communications (DSL): Windstream Iowa Communications acquired Iowa Telecom.

### Corrections

- DISH Network Corporation (satellite): Satellite data is being submitted and was not included in the April 2011 submission. While coverage is currently the entire state boundary, work continues on having more granular data available.
- East Buchanan Telephone Cooperative (fixed wireless): Provider submitted initial data for October 2011 submission.
- HickoryTech Corporation (DSL): Provider had indicated speed tier 6 in a small portion of its service area, but this has been changed to a tier 4 download speed across its entire service area.
- Hughes Network Systems, LLC (satellite): Satellite data is being submitted and was not included in the April 2011 submission. While coverage is currently the entire state boundary, work continues on having more granular data available.
- Internet Solver, Inc. (DSL): Coverage not submitted in previous datasets; coverage created from data found on provider website.
- Kalnet (fixed wireless): Provider reduced speeds to more accurately represent its infrastructure.
- Knology of the Plains, Inc. (cable): Provider submitted initial data for the October 2011 submission.
- Prairieburg Telephone Company (DSL): Provider previously submitted a technology of transmission code 20, but it was corrected to a technology of transmission code 10 for the October 2011 submission.
- Walnut Telephone Company (DSL): To more accurately represent the provider's DSL service area, the service area was reduced in certain locations.
- Walnut Telephone Company (cable, fiber): To more accurately represent the provider's cable and fiber service areas, the service areas were expanded in certain locations.

- WildBlue Communications, Inc. (satellite): Satellite data is being submitted and was not included in the April 2011 submission. While coverage is currently the entire state boundary, work continues on having more granular data available.

#### Changes and/or Corrections – Entirely New Dataset Submitted

- AT&T Inc. (mobile wireless)
- Cable ONE Inc. (cable)
- CenturyLink (DSL)
- Chat Mobility (mobile wireless)
- CoxCom (cable)
- Leap Wireless International, Inc. (mobile wireless)
- Sprint Nextel Corporation (mobile wireless)
- T-Mobile USA, Inc. (mobile wireless)
- United States Cellular Corporation (mobile wireless)
- Verizon Communications, Inc. (mobile wireless)

## **IOWA FIELD VALIDATION METHODOLOGY**

Connected Nation focused a portion of its time on specific validation processes such as:

- conducting random spectrum analysis studies throughout the state using an Avcom PSA-37-XP spectrum analyzer;
- conducting mobile speed tests throughout the state using an iPhone, Android (or other smart phone) as well as provider-specific aircards (Sprint 3G/4G, Clearwire et al);
- identifying pre-selected, provider-submitted wireless transmit tower sites and cross-referencing data about that tower against the Federal Communications Commission (FCC) databases such as Antenna Structure Registration and/or the Universal Licensing System;
- cross-referencing Federal Registration Number data against available FCC Form 477 data as well as the FCC **CO**mmission **RE**gistration **S**ystem (CORES);
- validating provider submitted data (for example: latitude/longitude) using a handheld Garmin eTrex Summit GPS unit or GPS enabled software such as Microsoft Streets and Trips;
- locating physical wire-line attributes (such as Remote Terminals, CATV plant, etc.) and comparing them against provider submitted data; and
- conducting on-net and off-net speed tests using the FCC portal at <http://www.broadband.gov/qualitytest/about/> or using the Ookla Net Metrics enabled speed test utility located on each of Connected Nation's state specific websites.

Additionally, Connected Nation cross-referenced numerous public documents in order to ensure that all known broadband providers were located and contacted. This included searching membership logs from the trade associations (WISPA, WCAI, PCIA, etc.), the Cable Television Fact

Book, Public Utility Commission records, Public Service Commission records, Chamber of Commerce, etc.

To date, Connected Nation's staff conducted on-site validation tests in Iowa on the following providers: Algona Municipal Utilities; Ambercomm; AT&T, Inc.; Aventure Communications; Ayrshire Farmers Mutual Telephone Company; Brooklyn Mutual Telecommunications Cooperative; Cable ONE, Inc.; Cedar Falls Utilities; Central Scott Telephone; Chat Mobility; Circle Computer Resources; Citizens Mutual Telephone Cooperative; Clarence Telephone Company; Clearwire; Cloudburst 9; Community Cable Television Agency of O'Brien County; Cornbelt Telephone; Cramer IT; Cumberland Telephone; Danville Mutual Telephone Company; East Buchanan Telephone Cooperative; Evertek Enterprises; Farmers & Merchants Mutual Telephone Company; Farmers Cooperative Telephone Company-Dysart; Farmers Mutual Telephone Company-Jessup; Farmers Mutual Telephone of Stanton; Farmers Telephone Company-Essex; Fenton Co-Op Telephone Company; FiberComm L.C.; Frontier Communications Corporation; Goldfield Access Network; Grand Mound Cooperative; Grand River Mutual Telephone Cooperative; Grundy Center Municipal Utilities; Harlan Municipality Utilities; Heartland Net; Hot Spots; I-35 Telephone Company; ImOn Communications; Internet Consulting Services LLC; Iowa Telecom Services; Jefferson Telephone Company; Kalona Cooperative Telephone Company; KDSC, Inc.; KeyOn Communications (d.b.a. Dynamic Broadband); LaPorte City Telephone Company; Laurens Municipal Communications Utility; Lenox Municipal Utilities; Liberty Communications; Logannet; Lone Rock Cooperative Telephone Company; Long Lines; Mahaska Communications Group; Marne Elkhorn Telephone; MCC Iowa LLC (d.b.a. Mediacom Iowa LLC); Mediapolis Telephone Company; MidIowa Net; MidlandsNet LLC; Milford Cable TV, Inc.; Minburn Communications; Muscatine Power & Water (d.b.a. Machlink); Mutual Telephone Company of Morning Sun Iowa; NetConx; Northern Iowa Telephone Company; Northeast Telephone Company; Panora Communications Cooperative; Partner Communications Cooperative; Prairie iNet; Premier Communications; Qwest Corporation; RingTel Communications; River Valley Telecommunications Coop; Royal Telephone Company; Sac County Mutual Telephone; Sharon Telephone Company; SpeedNet LLC (d.b.a. Speed Connect); Spencer Municipal Utilities; Sprint Nextel Corporation; Sully Telephone Association; Superior Telephone Cooperative; Terril Telephone Cooperative; T-Mobil USA, Inc.; Traer Municipal Utilities; USA Communications (d.b.a. Farmers Mutual Telephone Cooperative-Shellsburg; Van Buren Telephone Company, Inc.; Verizon Communications, Inc.; Villisca Farmers Telephone Company; Walnut Telephone Company; Webster-Calhoun-Cooper Telephone Association; Wellman Cooperative Telephone Association; West Liberty Telephone Company; Western Iowa Telephone Association; Woolstock Mutual Telephone; and WTC Communications, Inc.

From program initiation through this reporting period, Connected Nation has completed in-the-field validation testing against 94 companies (out of a universe of 204 viable providers) totaling 46.08 percent within the state of Iowa.

Connected Nation has also continued to review provider datasets for accurate speed information, platform listings, and other intricacies that may fall outside of the standard SBI Data Transfer Model parameters. Any providers whose submitted coverage and attributes are anticipated to come into

question have been further reviewed and confirmed; details on a case-by-case basis are presented below.

### Mediacom

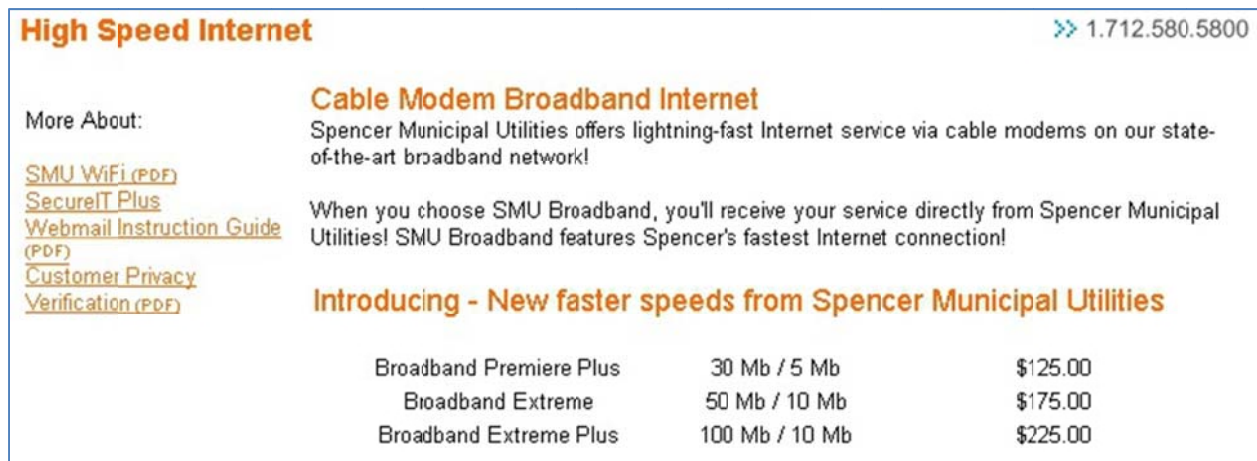
Issue: Cable platform with a maximum advertised download speed in tier 10, higher than expected value range for the technology.

Resolution: Provider representative confirmed availability of speed tier 10 service.

### Spencer Municipal Utilities

Issue: Cable platform with maximum advertised download speed in tier 10, higher than expected value range for the technology.

Resolution: Provider's website advertises cable service at 100 Mbps; screenshot available below.



The screenshot shows the 'High Speed Internet' page for Spencer Municipal Utilities. It includes a 'More About:' section with links to SMU WiFi (PDF), SecureIT Plus, Webmail Instruction Guide (PDF), Customer Privacy, and Verification (PDF). The main heading is 'Cable Modem Broadband Internet', followed by a description of the service and a note that service is provided directly from Spencer Municipal Utilities. Below this is a table titled 'Introducing - New faster speeds from Spencer Municipal Utilities' listing three service tiers: Broadband Premiere Plus (30 Mb / 5 Mb, \$125.00), Broadband Extreme (50 Mb / 10 Mb, \$175.00), and Broadband Extreme Plus (100 Mb / 10 Mb, \$225.00).

Introducing - New faster speeds from Spencer Municipal Utilities		
Broadband Premiere Plus	30 Mb / 5 Mb	\$125.00
Broadband Extreme	50 Mb / 10 Mb	\$175.00
Broadband Extreme Plus	100 Mb / 10 Mb	\$225.00

### WTC Communications

Issue: Technology of transmission 40 with a maximum advertised download speed in tier 4, lower than expected value range for the technology.

Resolution: Input from provider on the technology listing and corresponding speed tier was not received prior to the submission; dataset submitted as-is and work will continue to confirm information in dataset for April 2012.

## DATA SUBMISSION AND COVERAGE ESTIMATION OF NON-PARTICIPATING PROVIDER

### Internet Solver, Inc.

As part of its ongoing broadband mapping efforts, Connected Nation (CN) has developed a series of processes with the goal of submitting mapping data to NTIA for every known and qualifying broadband provider, regardless of whether the provider has chosen to support and participate in the SBI mapping initiative.



The following narrative provides detail regarding the recent data collection activities related to Internet Solver, Inc., a DSL provider, located in Urbandale, Iowa, with service areas in Dallas and Polk Counties. The narrative will include information regarding how and where CN obtained publicly available data and will perform the on-the-ground validation techniques after the October 2011 submission has been completed for inclusion in the April 2012 submission.

### **Background**

CN staff members have continued trying to obtain participation of the provider with 3 instances of communication via telephone and e-mail sessions since July 27, 2011, through August 22, 2011. Only one e-mail reply was received from a company representative on August 22, 2011, with a response of electing not to participate. A CN staff member will visit the Internet Solver, Inc. office after the conclusion of the October 2011 submission to discuss the broadband mapping project in person with Internet Solver, Inc. and will include the results of that visit in the April 2012 submission.

### **The Issue**

Internet Solver, Inc. has indicated its unwillingness to participate in the Iowa broadband mapping initiative.

### **Identification of Provider's Service Plans, Service Area, Legal Name, d.b.a., FRN, and Licensing**

CN began building a file based on information obtained from a spokesperson of the provider as well as research information and, as time progressed, enriched the file with information obtained through the public domain. For example, CN reviewed the provider's website, [www.internetsolver.com](http://www.internetsolver.com), to determine the residential service plans (**Exhibit A**) and the service area (**Exhibit B**) of the provider's network. A search for a Federal Registration Number ("FRN") on the FCC **CO**mmission **RE**gistration **S**ystem ("CORES") system yielded an FRN of 0015518053 (**Exhibit C**) with contact information relative to the owner of the company. Exhibits A, B, and C are presented on the following pages.

## Exhibit A: Service Plans

### INTERNET SOLVER PREMIER DSL INTERNET ACCESS

Premier DSL coverage is provided by installing our own DSL equipment in the telephone office that services your home or business. This allows us to offer speeds and capabilities that no one else does.

You can use our [online qualification system](#) to instantly see which services are available to you!

The Premier service includes all of the benefits of the Standard service, plus additional benefits.

- Unsurpassed Speed and Coverage
- No telephone service required
- Free Installation
- Free Technical Support
- Effective Spam Filtering
- Free Modem Rental
- 30-Day Satisfaction Guarantee

Due to the nature of the advanced technology used to deliver these services, the coverage area is different than the Standard DSL service. All of our DSL services include free onsite installation for one computer. This is a \$99 value for free!

The pricing reflects a 1-year contract term with automatic payment from a credit card or checking account.

#### Home DSL Service

This service includes an email account, free modem rental, spam filtering, technical support, and free installation.

		Per Month
Speed	16-24 Meg	\$100.00
	11-15 Meg	\$90.00
	8-10 Meg	\$80.00
	5-7 Meg	\$80.00
	3 Meg	\$45.00
	1.5 Meg	\$40.00
	256 K	\$30.00

#### Business DSL Service

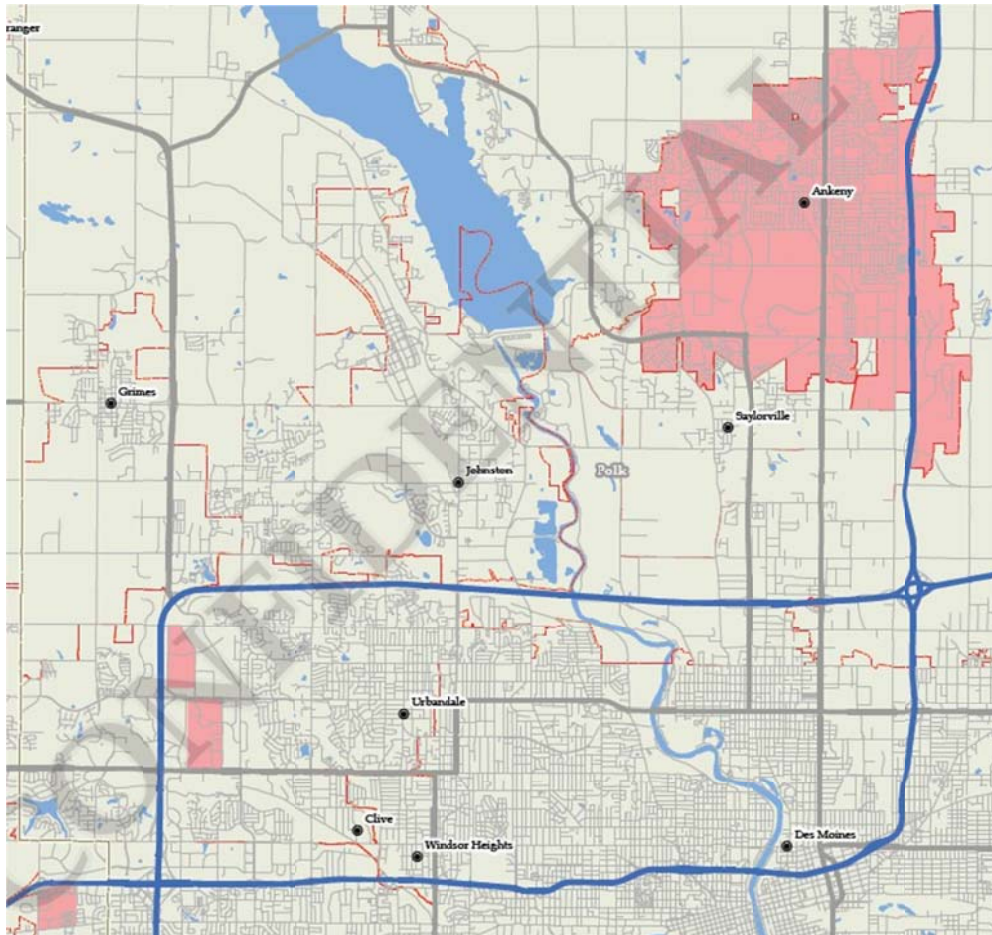
This service includes a static IP address, free modem rental, technical support, and free installation.

		Per Month
Speed	16-24 Meg	\$110.00
	11-15 Meg	\$100.00
	8-10 Meg	\$90.00
	5-7 Meg	\$80.00
	3 Meg	\$55.00
	1.5 Meg	\$50.00
	256 K	\$35.00

Internet Solver offers three types of DSL service to meet the differing needs of our clients.



## Exhibit B: Service Area



## Exhibit C: Federal Registration Number

Registration Detail	
FRII:	0015518053
Registration Date:	09/19/2006 11:28:00 AM
Last Updated:	09/19/2006 12:02:00 PM
Business Name:	Internet Solver, Inc.
Business Type:	Private Sector , Corporation
Contact Organization:	Internet Solver, Inc.
Contact Position:	President
Contact Name:	Mr David J Weis
Contact Address:	1129 42nd Street Des Moines, IA 50311 United States
Contact Email:	djweis@internetsolver.com
ContactPhone:	(515) 224-9229
ContactFax:	(515) 224-0829

### Preliminary Identification of Provider's Coverage Area


Connected Nation extracted the Internet Solver, Inc. extended service area map (**Exhibit D**) from the provider's website and the information obtained from the provider in a telephone conversation indicating it provides broadband DSL service within the city limits of Ankeny, Iowa.

### **Exhibit D: Provider's Extended Service Area**

**INTERNET SOLVER EXTENDED AREA DSL INTERNET ACCESS**

Internet Solver was the first Internet Provider in the state to install remote DSL equipment. The area inside the red lines on the map to the right and below are the areas we can provide our Extended Area DSL Service. We have other expansions coming soon and will also take requests for future service areas. With the advanced equipment used to provide our Premier DSL service and the area covered with the Extended Area DSL, we have the largest DSL coverage area in central Iowa.

We are currently working with other commercial and residential property owners to bring the most cost effective Internet access to their tenants. If you are a property owner that would like a competitive edge getting and retaining tenants, please [contact us](#).



Extended Area DSL Service		Service Agreement		
This service is available in select areas. It includes web hosting space, email accounts, priority support, and can include free installation.		3-Year	2-Year	1-Year
Speed	1.5 Meg	\$100.00	\$125.00	\$150.00
Installation		\$0.00	\$150.00	\$150.00

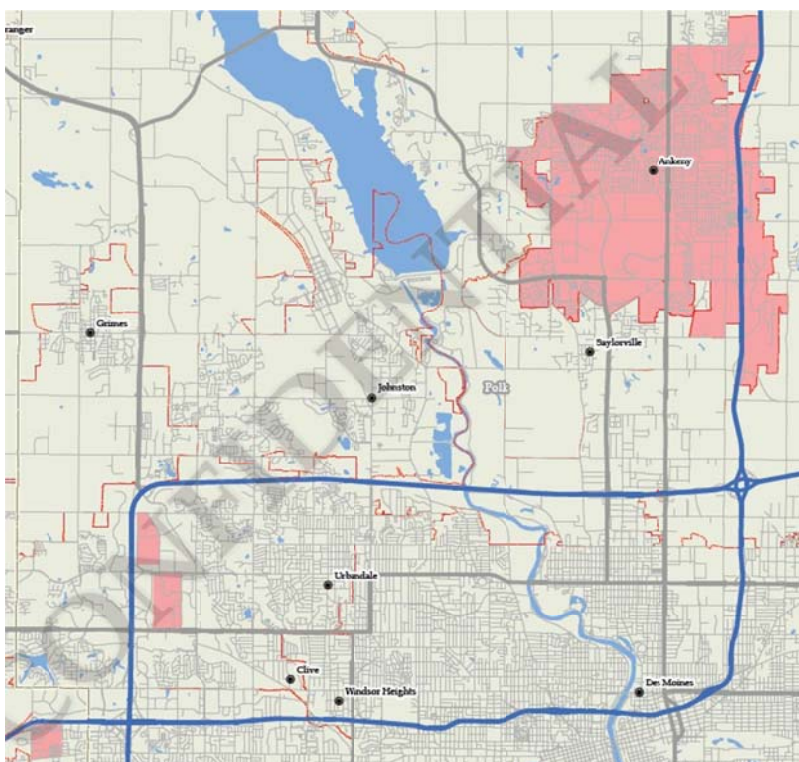
### Testing Techniques

Connected Nation staff will develop a site validation route based on data established with the PDF map image created for Internet Solver, Inc. and will begin the validation process after the October 2011 submission has been completed for inclusion in the April 2012 submission.

### Results and Submission for October 2011

From the information obtained from a spokesperson for Internet Solver, Inc. and its website, the staff of Connected Nation created a composite coverage map (**Exhibit E**) that was presented to the provider for approval on August 15, 2011. We received an e-mail from the spokesperson on August 22, 2011, stating they are not interested in participating. E-mail notification was sent to the provider advising the information will be submitted to Connect Iowa and the NTIA broadband mapping project for processing if there are no discrepancies of the estimated coverage received from the provider within a 48-hour period.

### Exhibit E: Internet Solver, Inc. Composite Coverage



### ACCURACY AND VERIFICATION: PROVIDER VALIDATION METHODOLOGY

Broadband providers maintain their service area data in many different formats, all in varying levels of complexity and granularity. In order to ensure that the data required by the NTIA is standardized across all providers and that it is as accurate as possible, Connected Nation translates and formats the data that providers are able to supply into a GIS shapefile and produces maps for the provider to review. The resulting map(s) and review process allow for providers to see their service area in a geographic format – for some providers, this is the first time they have seen maps of their broadband service area. Having the mapped service area allows providers to quickly identify any issues that appear in the data representation, whether the issue is in the data translation into a GIS format or from the original data collection and submission. Often data is provided from various sources and through the review and revision process, local engineers who operate the networks and work in the field are able to ensure that the tabular data that has been submitted is accurate and represents the real-world network extent. Any issues in how the service area is represented on the map(s) are remedied by Connected Nation, whether they are additions, removal of service, or any other revisions. Revised maps of service area representations are sent to the provider for review and approval; Connected Nation will revise data and return maps as many times as necessary until the provider is in agreement that the map represents their service area as accurately as possible. Once the review process has been completed and final approval of the data is provided, the data is deemed ready for NTIA submission.

Once the data collection has been aggregated at a statewide level, static maps of statewide and county-level availability are produced and made publicly available. In addition, consumers can visit the interactive online tool, BroadbandStat, to create customized views of broadband service areas and analyze corresponding demographic information. Leveraging broadband service data on various platforms allows for public users, providers, and other stakeholders to review, scrutinize, and provide feedback on the represented data. This feedback becomes a validation method in itself as consumers submit inquiries to Connected Nation either affirming where service is not available or identifying areas where broadband service is shown on the map, but in actuality is not available. This allows for a follow-up to providers regarding revisions to the data as it is represented; it also allows for Connected Nation to identify locations where on-site visits may be necessary to complete field validation of available services. Public feedback on all forms of mapping products serves as a localized validation method for provider-supplied information and allows Connected Nation to resolve inaccuracies as they are identified to ensure that only the highest quality information is provided to stakeholders.

Estimates derived from provider-validated data indicate that approximately 2.54 percent of Iowa households do not have terrestrial fixed broadband service available, and approximately 0.04 percent<sup>1</sup> of Iowa households have neither mobile nor fixed broadband service available.<sup>2</sup>

Within rural areas of the state, results derived from provider-validated data indicate that approximately 4.21 percent of rural Iowa households do not have terrestrial fixed broadband service available, and approximately 0.05 percent<sup>3</sup> of rural Iowa households have neither mobile nor fixed broadband service available.<sup>4</sup> Please note that the availability estimates presented are based on Census 2000 household information; these figures will be updated in the near future with Census 2010 household information.

---

<sup>1</sup> In accordance with NTIA's definition of available broadband service as specified in the SBI NOFA, this estimate includes both terrestrial fixed *and* mobile broadband service, if the service offers download speeds of at least 768 Kbps and upload speeds greater than 200 Kbps.

<sup>2</sup> Due to the nature of the SBI data collection methodology as defined by the NTIA and based on both census block geographic units and street segment data, the estimates of broadband availability derived from provider-validated data may include an overstatement of the actual number of households with broadband availability. Under the census block-based data collection method, a provider will typically report broadband availability for an entire census block whether its network is present across the whole or only a subset of that census block. This potential overestimation at the census block level can be amplified as the data is aggregated across the entire state.

<sup>3</sup> See footnote 1.

<sup>4</sup> See footnote 2.



## WIRELESS METHODOLOGY

### **Broadband Service Availability in Provider's Service Area Wireless Services Not Provided to a Specific Address**

Data solicited from a fixed wireless provider to create propagation models include, but are not limited to:

1. The name of the structure
2. Whether the transmitting device is operational or proposed
3. The maximum advertised downstream speed, the maximum advertised upstream speed
4. The typical downstream speed, the typical upstream speed (peak periods for both)
5. The frequency range of spectrum being used (as prescribed by NTIA)
6. The primary population center(s) being served (for geopolitical boundary reference)
7. The physical address of the transmit site (in the event latitude/longitude is unavailable from the provider this allows a quick reference point for geocoding)
8. Latitude in either Degrees, Minutes and Seconds and/or in Decimal Degrees (typically received as NAD 27 or NAD 83)
9. Longitude in either Degrees, Minutes and Seconds and/or in Decimal Degrees (typically received as NAD 27 or NAD 83)
10. Antenna pattern (e.g. omni-directional, 180°, 120°, 90°, etc.)
11. Azimuth of antenna (e.g. 360° with magnetic declination if known)
12. Approximate transmit radius (in feet, miles, or kilometers)
13. Polarity of transmit antenna (Vertical or Horizontal)
14. Transmit antenna gain (in dBi)
15. Line loss (applicable only to providers using coax, heliax, waveguide or other forms of cabling – excludes power-over-Ethernet devices)
16. Mechanical and/or Electrical beam tilt (if applicable)
17. Equipment Manufacturer (allows easy cross-reference against manufacturer's specification sheet)
18. Power output of the transmitting device (if unknown, FCC standards or manufacturer specifications are applied)
19. AMSL at base of tower site
20. Antenna centerline AGL (height of antenna above ground level measured at the centerline of the actual antenna)
21. Foliage factors (Evergreens/Deciduous and percent of ground cover)
22. Ground Clutter (primarily used in rural areas to account for foliage and in metropolitan areas to account for types and heights of buildings if known)
23. Average gain of receive antenna
24. Receive antenna is estimated at height above average terrain (HAAT) of 6.2 meters/20 feet

25. Federal Registration Numbers (if applicable) which may allow opportunities to cross-reference and/or obtain additional data from the Federal Communications Commission Universal Licensing System and the **CO**mmission **RE**gistration **S**ystem

Propagation modeling is an empirical mathematical formulation for the characterization of radio wave propagation as a function of frequency, distance, and other conditions. Propagation software(s) typically use the Irregular Terrain Model (also known as Longley-Rice) of radio propagation for frequencies between 20 MHz and 20 GHz. This model is based on electromagnetic theory and statistical analyses of the combination of terrain features and radio measurements, then predicting the median attenuation of a radio signal as a function of distance and the variability of the signal in time and in space. For metropolitan areas, the software can typically be adjusted to use the Okumura-Hata model which accounts for predicting the behavior of cellular transmissions in areas where buildings are the primary obstructions. The resulting product from either model depicts a graphical illustration of the theoretical propagation characteristics of a selected frequency range based on defined variables (receiver sensitivity of the home/mobile device, foliage factor, and digital elevation terrain input).

After converting propagation models into a geospatial format, additional processing is completed to remove the small pixels representing service present in the resulting dataset. These areas are initially created based on the parameters entered in the software from the provider equipment information, the underlying data parameters of elevation, hillshade, etc., and the limitations of the software itself to display a broadband service area as accurately as possible. Generally, these random pixel striations appear as a result of signal levels reaching the highest elevated points within the prescribed radius. Typically, while this pixilation anomaly shows legitimate areas where signals can be received, these highly elevated points may have exceedingly sparse populations or are entirely void of population. As a result, and congruent to the *Wireless Technology Methodologies and Business Logic* white paper submitted to NTIA on January 20, 2011, all independent pixels representing service that are less than 0.125 square miles in area have been removed from the geospatial representation of each wireless provider.

## **BROADBAND INQUIRIES METHODOLOGY**

Connected Nation collects consumer feedback in the form of broadband inquiries (BBIs). These inquiries represent any type of communication received from the public regarding broadband service. Once BBIs are received across the state, this information is overlaid with the broadband availability information which was collected through the SBI program. This allows for a real-world comparison of the broadband landscape to the information received from broadband inquiries. Consumers submitting these inbound comments and/or inquiries are able to provide information regarding three categories: 1) residents who do not have broadband but want it; 2) residents who have broadband but want a different provider; and 3) residents who do not have broadband, but the broadband inventory maps indicate that they do.

BBIs are submitted frequently by consumers via the Connect Iowa website. Inquiries often seek help to identify local broadband provider options, or to learn when a specific provider may be able to provide service to that consumer. Consumer comments also provide information which may help modify maps with actual service area information. The primary objectives of Connected Nation regarding these inquiries are 1) to improve the accuracy of the state maps with submitted consumer information and follow-up field research; 2) to provide broadband options to consumers through cooperation with mapped providers and by facilitating new broadband service options; and 3) to map and analyze information from consumers about areas of unmet broadband demand and alternatives to currently mapped services.

New BBIs are assigned to either the GIS department or the Engineering & Technical Services (ETS) team depending on the category entered by the consumer on the website submission form. The GIS or ETS team members respond to each inquiry according to the information requested by the consumer. Many BBIs can be resolved through desktop research; however, if a BBI requires research in the field, the assigned ETS team member conducts such research when performing field validations in the area of the inquiry, or at other such time as is practical and appropriate. GIS and ETS team members respond to and conclude BBIs via telephone contact and/or e-mail communication.

The broadband inquiry process has been implemented in each of the Connected Nation state programs with successful results. Altogether Connected Nation has received over 17,000 broadband inquiries since 2007, allowing the state programs to evaluate each inquiry for broadband demand and data verification. These inquiries are continuously examined against current broadband availability, updated every six months, to determine if previously unserved households have been expanded to and can now receive broadband at their residence. This database of broadband inquiries has also allowed the Connected Nation state programs to aggregate demand in concentrated areas to show providers the exact locations where the population has made it clear that they would purchase broadband if it was made available to them. Providers in the states have responded to this process and have expanded to areas knowing that their investment will be worthwhile. Data verification methods have also proven successful, as the state programs have been able to show those inquiries that indicate the broadband service areas are misrepresented on the map to providers, who then verify where service cannot reach in regard to that residence(s). The broadband coverage in these states has been altered to create a more accurate map based on the inquiries submitted by the public.

During this reporting period, the Connect Iowa project has received a total of 17 inquiries (190 grant inception to date). As more inquiries are submitted to Connect Iowa, a more thorough validation of the broadband landscape can be performed, while also allowing providers to see which areas have a high demand for broadband adoption.

## **BROADBANDSTAT METHODOLOGY**

BroadbandStat is an online, interactive mapping tool for viewing, analyzing, and validating broadband data. Developed through a partnership with ESRI, the market leader in geographic information system (GIS) software, BroadbandStat is a multi-functional, user-friendly way for local

leaders, policymakers, consumers, and technology providers to devise a plan for the expansion and adoption of broadband.

First and foremost, BroadbandStat allows consumers to locate their residence and identify providers that offer broadband Internet service to that location. The interactive platform allows for users to build and evaluate broadband expansion scenarios using a wealth of data, including education and population demographics, broadband availability, and research about the barriers to adoption.

New functionality in BroadbandStat allows the consumer to provide feedback on the broadband data displayed on the interactive map. Through the collection of this feedback, a visual demand for broadband is presented. This visualization allows the Connected Nation state programs the ability to validate the broadband availability for accuracy. If residents within a region state they are without broadband, but the interactive map shows otherwise, this allows Connected Nation to approach the providers within that area in an effort to trim down their coverage to more accurately represent real-world availability on the ground.

The Connect Iowa project launched BroadbandStat on June 18, 2010, and has received a total of 5,818 visits to date, of which 618 occurred this reporting period.

## **SPEED TEST METHODOLOGY**

The 1,068 speed tests that are represented in the Connect Iowa Speed Test Report during this reporting period (4,229 grant inception to date) are the result of a partnership between Connected Nation and Ookla Net Metrics. Utilizing this relationship increases the level of confidence in the data being collected and provides for a far greater sample size than could be collected by a single testing site.

Ookla owns and operates Speedtest.net, as well as develops and deploys speed tests, such as the Connect Iowa speed test website, for partners around the world. This network of sites that is developed and run on its testing technology provides Ookla with a vast dataset that, due to the variability of geographic information collected across the varying speed test sites, is geocoded utilizing Geo-IP technology. This technology allows for tests to be geocoded to points of aggregation, typically larger nodes across provider networks. While there are hundreds of thousands of tests that have been conducted, the level of aggregation is only sufficient for county-level detail due to the test results being located at these larger nodes and not at an absolute location for each speed test.

In an effort to validate broadband data from the Connect Iowa project, speed test information is collected throughout the state. Speed tests provide speed information on the path taken through all networks (a provider's network as well as additional networks) a local machine must connect to in



order to reach the host test. The benefit of this collection of speed information is two-tiered. First, it allows for a comprehensive dataset of speeds, while also providing Connect Iowa with the information on where broadband services are available. Second, unlike theoretical speed information which was received through the data collection process, the use of speed tests provide real-world information on the speeds that currently exist within the state of Iowa.



## Broadband Provider Log

Complete	344
Non-Responsive/Refused	9
In Progress	5
Count of Datasets by Status	358
Total Unique Providers Represented	204

Provider Name	Platform	Status	NDA Execution Date	Notes
Alliance Communications Cooperative, Inc.	Fiber	Data Added to Statewide Inventory	1/28/2010	[SEPT-15-11 Matthew Brunt] Change: Provider expanded fiber service area.
Alpine Communications, LC	DSL	Data Added to Statewide Inventory	2/24/2010	[SEPT-15-11 Matthew Brunt] Change: Provider upgraded infrastructure and can now provide speed tier 7 download speeds.
AT&T Inc.	Mobile Wireless	Data Added to Statewide Inventory	12/16/2009	[AUG-26-11 Matthew Brunt] Changes and/or Corrections: Possible service expansion or corrections to previous dataset; entirely new dataset provided for October 2011 submission.
Atkins Telephone Company	Fiber	Data Added to Statewide Inventory	5/14/2010	[SEPT-15-11 Matthew Brunt] Change: Provider upgraded infrastructure and can now offer speed tier 8 download speeds.
Aventure Communications	Fixed Wireless	Data Added to Statewide Inventory	4/8/2010	[SEPT-15-11 Matthew Brunt] Change: Provider expanded fixed wireless service area.
Baldwin Nashville Telephone Company, Inc.	Fiber	Data Added to Statewide Inventory	2/3/2010	[SEPT-15-11 Matthew Brunt] Change: Provider upgraded infrastructure and can now provide fiber broadband to parts of their service area.
Bernard Telephone Company, Inc.	Fiber	Data Added to Statewide Inventory	5/19/2010	[SEPT-15-11 Matthew Brunt] Change: Provider updated infrastructure and can now provide fiber broadband to their entire service area.
Bernard Telephone Company, Inc.	Fixed Wireless	Data Added to Statewide Inventory	5/19/2010	[SEPT-15-11 Matthew Brunt] Change: Provider expanded a portion of their fixed wireless coverage area.
Cable ONE Inc.	Cable	Data Added to Statewide Inventory	12/7/2009	[AUG-26-11 Matthew Brunt] Changes and/or Corrections: Possible service expansion or corrections to previous dataset; entirely new dataset provided for October 2011 submission.
Cedar Falls Utilities	Fiber	Data Added to Statewide Inventory	6/16/2010	[SEPT-15-11 Matthew Brunt] Change: Provider expanded fiber service area.
CenturyLink	DSL	Data Added to Statewide Inventory	12/4/2009	[AUG-26-11 Matthew Brunt] Changes and/or Corrections: Possible service expansion or corrections to previous dataset; entirely new dataset provided for October 2011 submission.
Chat Mobility	Mobile Wireless	Data Added to Statewide Inventory	1/19/2010	[AUG-26-11 Matthew Brunt] Changes and/or Corrections: Possible service expansion or corrections to previous dataset; entirely new dataset provided for October 2011 submission.
Colo Telephone Company	Fiber	Data Added to Statewide Inventory	1/28/2010	[SEPT-15-11 Matthew Brunt] Change: Provider upgraded infrastructure and can now offer speed tier 7 download speeds.
Communications 1 Network, Inc.	Fiber	Data Added to Statewide Inventory	4/14/2010	[SEPT-15-11 Matthew Brunt] Change: Provider upgraded infrastructure and can now offer speed tier 10 download speeds.
Corn Belt Telephone Company	Fiber	Data Added to Statewide Inventory	2/15/2010	[SEPT-15-11 Matthew Brunt] Change: Provider expanded their fiber service area.
CoxCom Inc.	Cable	Data Added to Statewide Inventory	1/29/2010	[AUG-26-11 Matthew Brunt] Changes and/or Corrections: Possible service expansion or corrections to previous dataset; entirely new dataset provided for October 2011 submission.
East Buchanan Telephone Cooperative	Fixed Wireless	Data Added to Statewide Inventory	4/30/2010	[AUG-26-11 Matthew Brunt] Correction: Provider submitted initial data for October 2011 submission.
Farmers & Merchants Mutual Telephone Company	Fixed Wireless	Data Added to Statewide Inventory	5/7/2010	[SEPT-15-11 Matthew Brunt] Change: Provider has two new fixed wireless towers in operation.
Farmers Cooperative Telephone Company-Dysart	DSL	Data Added to Statewide Inventory	3/12/2010	[SEPT-15-11 Matthew Brunt] Change: Provider expanded their DSL service area.
Frontier Communications Corporation	DSL	Data Added to Statewide Inventory	1/22/2010	[AUG-26-11 Matthew Brunt] Change: Provider expanded coverage area.
Grand Mound Cooperative Telephone Association	Fiber	Data Added to Statewide Inventory		[SEPT-15-11 Matthew Brunt] Change: Provider expanded their fiber service area.
Grand River Mutual Telephone Corporation	DSL	Data Added to Statewide Inventory	2/5/2010	[SEPT-15-11 Matthew Brunt] Change: Provider expanded their DSL service area.
HickoryTech Corporation	DSL	Data Added to Statewide Inventory	2/2/2010	[SEPT-15-11 Matthew Brunt] Correction: Provider had indicated speed tier 6 in a small portion of their service area, but this has been changed to a tier 4 download speed across their entire service area.
Kalnet	Fixed Wireless	Data Added to Statewide Inventory	5/21/2010	[AUG-26-11 Matthew Brunt] Correction: Provider reduced speeds to more accurately represent their infrastructure.
Knology of the Plains, Inc.	Cable	Data Added to Statewide Inventory	7/13/2011	[SEPT-15-11 Matthew Brunt] Correction: Provider submitted initial data for the October 2011 submission.
Leap Wireless International, Inc.	Mobile Wireless	Data Added to Statewide Inventory	4/6/2010	[AUG-26-11 Matthew Brunt] Changes and/or Corrections: Possible service expansion or corrections to previous dataset; entirely new dataset provided for October 2011 submission.
Loganet	Fixed Wireless	Data Added to Statewide Inventory		[SEPT-15-11 Matthew Brunt] Change: New fixed wireless tower in operation.
Lone Rock Cooperative Telephone Company	DSL	Data Added to Statewide Inventory	2/15/2010	[SEPT-15-11 Matthew Brunt] Change: Provider upgraded speeds but they fell within the same speed tier, so provider still offers speed tier 5 download speeds.

Midlowa Net	Fixed Wireless	Data Added to Statewide Inventory		[SEPT-15-11 Matthew Brunt] Change: Provider sent frequency change, but it fell within the previously submitted frequency range that was included in the April 2011 submission.
Miles Cooperative Telephone Association	DSL	Data Added to Statewide Inventory	5/17/2010	[SEPT-15-11 Matthew Brunt] Change: Provider upgraded infrastructure and can now offer speed tier 5 download speeds.
NetConX, Inc.	Fixed Wireless	Data Added to Statewide Inventory	4/6/2010	[AUG-30-11 Matthew Brunt] Change: New wireless tower in operation.
New Ulm Telecom, Inc.	DSL	Data Added to Statewide Inventory	3/10/2010	[SEPT-15-11 Matthew Brunt] Change: Provider upgraded infrastructure and can now offer speed tier 5 download speeds.
North English Cooperative Telephone Company	DSL	Data Added to Statewide Inventory	5/12/2010	[SEPT-15-11 Matthew Brunt] Change: Provider upgraded infrastructure and can now offer speed tier 4 download speeds.
Panora Communications Cooperative	Fiber	Data Added to Statewide Inventory	1/29/2010	[SEPT-15-11 Matthew Brunt] Change: Provider expanded their fiber service area while also upgrading their infrastructure, and can now offer speed tier 7 download speeds.
Partner Communications Cooperative	Fiber	Data Added to Statewide Inventory	5/15/2010	[SEPT-15-11 Matthew Brunt] Change: Provider upgraded infrastructure and can now provide fiber broadband to portions of their service area.
Prairieburg Telephone Company, Inc.	DSL	Data Added to Statewide Inventory	3/25/2010	[SEPT-15-11 Matthew Brunt] Correction: Provider previously submitted a technology of transmission code 20, but it was corrected to a technology of transmission code 10 for the October 2011 submission.
Preston Telephone Company	DSL	Data Added to Statewide Inventory	2/5/2010	[SEPT-15-11 Matthew Brunt] Change: Provider upgraded infrastructure and can now offer speed tier 6 download speeds.
SpeedNet, LLC	Fixed Wireless	Data Added to Statewide Inventory		[SEPT-15-11 Matthew Brunt] Change: Four new fixed wireless towers in operation.
Sprint Nextel Corporation	Mobile Wireless	Data Added to Statewide Inventory	1/14/2010	[AUG-26-11 Matthew Brunt] Changes and/or Corrections: Possible service expansion or corrections to previous dataset; entirely new dataset provided for October 2011 submission.
T-Mobile USA, Inc.	Mobile Wireless	Data Added to Statewide Inventory	1/8/2010	[AUG-26-11 Matthew Brunt] Changes and/or Corrections: Possible service expansion or corrections to previous dataset; entirely new dataset provided for October 2011 submission.
United States Cellular Corporation	Mobile Wireless	Data Added to Statewide Inventory	2/15/2011	[AUG-26-11 Matthew Brunt] Changes and/or Corrections: Possible service expansion or corrections to previous dataset; entirely new dataset provided for October 2011 submission.
Verizon Communications, Inc.	Mobile Wireless	Data Added to Statewide Inventory	12/14/2009	[AUG-26-11 Matthew Brunt] Changes and/or Corrections: Possible service expansion or corrections to previous dataset; entirely new dataset provided for October 2011 submission.
Walnut Telephone Company	DSL	Data Added to Statewide Inventory	4/14/2010	[SEPT-15-11 Matthew Brunt] Correction: To more accurately represent the provider's DSL service area, the service area was reduced in certain location.
Walnut Telephone Company	Cable	Data Added to Statewide Inventory	4/14/2010	[SEPT-15-11 Matthew Brunt] Correction: To more accurately represent the provider's cable service area, the service area was expanded in certain location.
Walnut Telephone Company	Fiber	Data Added to Statewide Inventory	4/14/2010	[SEPT-15-11 Matthew Brunt] Correction: To more accurately represent the provider's fiber service area, the service area was expanded in certain location.
West Liberty Telephone Company	Fixed Wireless	Data Added to Statewide Inventory	1/25/2010	[SEPT-15-11 Matthew Brunt] Change: New wireless tower in operation.
West Liberty Telephone Company	DSL	Data Added to Statewide Inventory	1/25/2010	[SEPT-15-11 Matthew Brunt] Change: Provider upgraded speeds but they fell within the same speed tier, so provider still offers speed tier 5 download speeds.
Windstream Communications	DSL	Data Added to Statewide Inventory		[SEPT-15-11 Matthew Brunt] Change: Windstream Iowa Communications acquired Iowa Telecom.
Ace Telephone Association	Backhaul	Backhaul Provider Only Processing Complete	3/8/2010	
Aventure Communications	Backhaul	Backhaul Provider Only Processing Complete	4/8/2010	
Level 3 Communications, LLC	Backhaul	Backhaul Provider Only Processing Complete	12/14/2009	
Mediacom Iowa, LLC	Backhaul	Backhaul Provider Only Processing Complete	1/12/2010	
Northeast Iowa Telephone Company	Backhaul	Backhaul Provider Only Processing Complete	4/13/2010	
Sprint Nextel Corporation	Backhaul	Backhaul Provider Only Processing Complete	1/14/2010	
Internet Solver, Inc.	DSL	Estimated Coverage Submitted for Non-Participating Provider		[AUG-22-11 Jill Lindgren] Received e-mail stating, "The owner of our company is not interested." [AUG-24-11 Matthew Brunt] Correction: Coverage not submitted in previous datasets; coverage created from data found on provider website.
360networks	Backhaul	No Update to Provide	1/19/2010	
Ace Telephone Association	DSL	No Update to Provide	3/8/2010	
Algona Municipal Utilities	Cable	No Update to Provide	2/9/2010	
Algona Municipal Utilities	Fiber	No Update to Provide	2/9/2010	
Alliance Communications Cooperative, Inc.	DSL	No Update to Provide	1/28/2010	
Alliance Communications Cooperative, Inc.	Backhaul	No Update to Provide	1/28/2010	
Alpine Communications, LC	Fiber	No Update to Provide	2/24/2010	
Alta Municipal Utilities	Cable	No Update to Provide	5/18/2010	
Andrew Telephone Company	DSL	No Update to Provide	1/19/2010	
Arcadia Telephone Cooperative	DSL	No Update to Provide	5/6/2010	
AT&T Inc.	Backhaul	No Update to Provide	12/16/2009	
Atkins Telephone Company	DSL	No Update to Provide	5/14/2010	
Ayrshire Farmers Mutual Telephone Company	DSL	No Update to Provide	2/17/2010	
Ayrshire Farmers Mutual Telephone Company	Fixed Wireless	No Update to Provide	2/17/2010	
Baldwin Nashville Telephone Company, Inc.	DSL	No Update to Provide	2/3/2010	

Bellevue Municipal Utilities	Fiber	No Update to Provide	5/20/2010	
Bernard Telephone Company, Inc.	DSL	No Update to Provide	5/19/2010	
Bernard Telephone Company, Inc.	Backhaul	No Update to Provide	5/19/2010	
BEVCOMM	DSL	No Update to Provide	6/16/2010	
BitWind Communications, LLC	Fixed Wireless	No Update to Provide		
Board of Water Electric & Communication Trustees of the City of Muscatine	DSL	No Update to Provide	5/14/2010	
Board of Water Electric & Communication Trustees of the City of Muscatine	Cable	No Update to Provide	5/14/2010	
Board of Water Electric & Communication Trustees of the City of Muscatine	Fiber	No Update to Provide	5/14/2010	
Brooklyn Mutual Telecommunications Cooperative	DSL	No Update to Provide	4/21/2010	
Butler-Bremer Communications	DSL	No Update to Provide	4/20/2010	
Butler-Bremer Communications	Fiber	No Update to Provide	4/20/2010	
Butler-Bremer Communications	Cable	No Update to Provide	4/20/2010	
Cascade Communications Company	DSL	No Update to Provide	1/23/2010	
Cascade Communications Company	Fiber	No Update to Provide	1/23/2010	
Casey Mutual Telephone Company	DSL	No Update to Provide	5/3/2010	
Casey Mutual Telephone Company	Backhaul	No Update to Provide	5/3/2010	
Cedar Falls Utilities	Cable	No Update to Provide	6/16/2010	
Center Junction Telephone Company	DSL	No Update to Provide	3/12/2010	
Central Scott Telephone Company, Inc.	Fixed Wireless	No Update to Provide	4/22/2010	
Central Scott Telephone Company, Inc.	DSL	No Update to Provide	4/22/2010	
CenturyLink	Backhaul	No Update to Provide	12/4/2009	
Circle Computer Resources	Fixed Wireless	No Update to Provide	7/6/2010	
Citizens Mutual Telephone Cooperative	DSL	No Update to Provide	2/26/2010	
Citizens Mutual Telephone Cooperative	Fiber	No Update to Provide	2/26/2010	
City of Hawarden	Cable	No Update to Provide	5/20/2010	
Clarence Telephone Company, Inc.	Fiber	No Update to Provide		
Clear Lake Independent Telephone Company	DSL	No Update to Provide	5/6/2020	
Clear Lake Independent Telephone Company	Fiber	No Update to Provide	5/6/2020	
CML Telephone Cooperative, Association of Meriden, Iowa	Fiber	No Update to Provide	1/25/2010	
Comelec Services, Inc.	Fixed Wireless	No Update to Provide	5/7/2010	
Community Cable Television Agency of O'Brien County	Cable	No Update to Provide	5/5/2010	
Community Cable Television Agency of O'Brien County	Fixed Wireless	No Update to Provide	5/5/2010	
Community Digital Wireless, LLC	Fixed Wireless	No Update to Provide	5/6/2010	
Complete Communication Services	Cable	No Update to Provide	6/17/2010	
Complete Communication Services	Fiber	No Update to Provide	6/17/2010	
Coon Rapids Municipal Utilities	Cable	No Update to Provide	4/22/2010	
Coon Valley Co-op Telephone Association, Inc.	DSL	No Update to Provide		
Coon Valley Co-op Telephone Association, Inc.	Fixed Wireless	No Update to Provide		
Cooperative Telephone Company	DSL	No Update to Provide	2/2/2010	
Cooperative Telephone Company	Fixed Wireless	No Update to Provide	2/2/2010	
Cooperative Telephone Exchange	Backhaul	No Update to Provide	2/2/2010	
Cooperative Telephone Exchange	Fiber	No Update to Provide	2/2/2010	
Corn Belt Telephone Company	DSL	No Update to Provide	2/15/2010	
Corn Belt Telephone Company	Fixed Wireless	No Update to Provide	2/15/2010	
Cumberland Telephone Company	DSL	No Update to Provide	4/27/2010	
Cumberland Telephone Company	Fixed Wireless	No Update to Provide	4/27/2010	
Danville Mutual Telephone Company	DSL	No Update to Provide		
				[SEPT-16-11 Matthew Brunt] Correction: Satellite data is being submitted and was not included in the April 2011 submission. While coverage is currently the entire state boundary, work continues on having more granular data available.
DISH Network Corporation	Satellite	No Update to Provide	1/27/2010	
Dixon Telephone Company	Cable	No Update to Provide	5/5/2010	
Dumont Telephone Company	DSL	No Update to Provide	2/25/2010	
Dumont Telephone Company	Fiber	No Update to Provide	2/25/2010	
Dunkerton Telephone Cooperative	DSL	No Update to Provide	4/15/2010	
East Buchanan Telephone Cooperative	DSL	No Update to Provide	4/30/2010	
Eastlight, LLC	Fixed Wireless	No Update to Provide		
Ellsworth Cooperative Telephone Association	DSL	No Update to Provide	1/25/2010	
Evertex Enterprises	Cable	No Update to Provide	2/3/2010	
Evertex Enterprises	Fiber	No Update to Provide	2/3/2010	
Evertex Enterprises	Fixed Wireless	No Update to Provide	2/3/2010	
F&B Communications, Inc.	DSL	No Update to Provide	2/19/2010	
F&B Communications, Inc.	Fixed Wireless	No Update to Provide	2/19/2010	
Farmers & Merchants Mutual Telephone Company	Fiber	No Update to Provide	5/7/2010	
Farmers Mutual Cooperative Telephone Company - Harlan	DSL	No Update to Provide	2/5/2010	
Farmers Mutual Cooperative Telephone Company - Harlan	Cable	No Update to Provide	2/5/2010	
Farmers Mutual Cooperative Telephone Company - Harlan	Fiber	No Update to Provide	2/5/2010	
Farmers Mutual Cooperative Telephone Company - Harlan	Fixed Wireless	No Update to Provide	2/5/2010	
Farmers Mutual Cooperative Telephone Company-Moulton	Fiber	No Update to Provide	5/21/2010	
Farmers Mutual Telephone Company - Jesup	DSL	No Update to Provide	4/20/2010	
Farmers Mutual Telephone Company - Nora Springs	DSL	No Update to Provide	1/26/2010	
Farmers Mutual Telephone Company - Nora Springs	Cable	No Update to Provide	1/26/2010	
Farmers Mutual Telephone Company - Nora Springs	Fiber	No Update to Provide	1/26/2010	
Farmers Mutual Telephone Company - Nora Springs	Fixed Wireless	No Update to Provide	1/26/2010	
Farmers Mutual Telephone Company of Stanton, Iowa	DSL	No Update to Provide	4/9/2010	
Farmers Mutual Telephone Company of Stanton, Iowa	Cable	No Update to Provide	4/9/2010	
Farmers Mutual Telephone Company of Stanton, Iowa	Backhaul	No Update to Provide	4/9/2010	
Farmers Mutual Telephone Company of Stanton, Iowa	DSL	No Update to Provide	4/9/2010	
Farmers Telephone Company-Essex	DSL	No Update to Provide	1/27/2010	
Farmers Telephone Company-Essex	Fixed Wireless	No Update to Provide	1/27/2010	
FiberComm L.C.	DSL	No Update to Provide	2/15/2010	
FiberComm L.C.	Fixed Wireless	No Update to Provide	2/15/2010	
FiberComm L.C.	Backhaul	No Update to Provide	2/15/2010	
Fibernet Communications, LLC	Backhaul	No Update to Provide	3/9/2010	
Frontier Communications Corporation	Backhaul	No Update to Provide	1/22/2010	
Goldfield Access Network, L.C.	DSL	No Update to Provide	1/22/2010	
Goldfield Access Network, L.C.	DSL	No Update to Provide	1/22/2010	
Grand Mound Cooperative Telephone Association	DSL	No Update to Provide		
Grand Mound Cooperative Telephone Association	Fixed Wireless	No Update to Provide		
Grand River Mutual Telephone Corporation	Fixed Wireless	No Update to Provide	2/5/2010	
Grand River Mutual Telephone Corporation	DSL	No Update to Provide	2/5/2010	
Griswold Cooperative Telephone Company	DSL	No Update to Provide	4/21/2010	
Grundy Center Municipal Utilities	Cable	No Update to Provide		
Grundy Center Municipal Utilities	Fixed Wireless	No Update to Provide		
Harlan Municipal Utilities	Cable	No Update to Provide	5/5/2010	
Harmony Telephone Company	Fiber	No Update to Provide	1/12/2010	
Hawkeye Telephone Company	DSL	No Update to Provide	2/12/2010	
Heart of Iowa Communications Cooperative	DSL	No Update to Provide	1/7/2010	
Heart of Iowa Communications Cooperative	Fiber	No Update to Provide	1/7/2010	
Heart of Iowa Communications Cooperative	Backhaul	No Update to Provide	1/7/2010	

Hospers Telephone Exchange, Inc.	DSL	No Update to Provide	1/11/2010	[SEPT-16-11 Matthew Brunt] Correction: Satellite data is being submitted and was not included in the April 2011 submission. While coverage is currently the entire state boundary, work continues on having more granular data available.
Hospers Telephone Exchange, Inc.	Cable	No Update to Provide	1/11/2010	
Hubbard Cooperative Telephone Association and Cable	DSL	No Update to Provide	5/14/2010	
Hughes Network Systems, LLC	Satellite	No Update to Provide	2/5/2010	
Huxley Communications Cooperative	Backhaul	No Update to Provide	1/25/2010	
Huxley Communications Cooperative	DSL	No Update to Provide	1/25/2010	
Huxley Communications Cooperative	Fiber	No Update to Provide	1/25/2010	
I-35 Telephone Company	DSL	No Update to Provide	2/2/2010	
I-35 Telephone Company	Fiber	No Update to Provide	2/2/2010	
I-35 Telephone Company	Fixed Wireless	No Update to Provide	2/2/2010	
IAMO Telephone Company	DSL	No Update to Provide	1/25/2010	
IAMO Telephone Company	Fixed Wireless	No Update to Provide	1/25/2010	
ImOn Communications, LLC	Cable	No Update to Provide		
ImOn Communications, LLC	Fiber	No Update to Provide		
ImOn Communications, LLC	Backhaul	No Update to Provide		
Independence Telecommunications Utility	Cable	No Update to Provide	4/9/2010	
Internet Consulting Services, LLC	Fixed Wireless	No Update to Provide	5/19/2010	
Iowa Connect, Inc.	Fixed Wireless	No Update to Provide	5/12/2010	
Iowa Network Services	Backhaul	No Update to Provide	3/5/2010	
Jefferson Telephone Company	DSL	No Update to Provide	1/22/2010	
Jefferson Telephone Company	Fiber	No Update to Provide	1/22/2010	
Kalona Cooperative Telephone Company	DSL	No Update to Provide	1/20/2010	
Kalona Cooperative Telephone Company	Fiber	No Update to Provide	1/20/2010	
KDSC, Inc.	Fixed Wireless	No Update to Provide	5/18/2010	
KeyOn Communications, Inc.	Fixed Wireless	No Update to Provide	10/15/2009	
KeyOn Communications, Inc.	DSL	No Update to Provide	10/15/2009	
KeyOn Communications, Inc.	Fixed Wireless	No Update to Provide	10/15/2009	
Keystone Farmers Cooperative Telephone Company	DSL	No Update to Provide	4/12/2010	
Killduff Telephone Company	DSL	No Update to Provide		
La Motte Telephone Company, Inc.	DSL	No Update to Provide	2/16/2010	
La Motte Telephone Company, Inc.	Fixed Wireless	No Update to Provide	2/16/2010	
La Porte City Telephone Co	DSL	No Update to Provide	2/22/2010	
Laurens Municipal Communications Utility	Cable	No Update to Provide	6/2/2010	
Lehigh Valley Cooperative Telephone Association	Fiber	No Update to Provide	4/16/2010	
Lenox Municipal Utilities	Cable	No Update to Provide	4/20/2010	
LISCO Wireless	DSL	No Update to Provide	1/28/2010	
LISCO Wireless	Fiber	No Update to Provide	1/28/2010	
LISCO Wireless	Backhaul	No Update to Provide	1/28/2010	
Long Lines	DSL	No Update to Provide	5/4/2010	
Long Lines	Cable	No Update to Provide	5/4/2010	
Long Lines	Backhaul	No Update to Provide	5/4/2010	
Long Lines	Backhaul	No Update to Provide	5/4/2010	
Long Lines	Backhaul	No Update to Provide	5/4/2010	
Long Lines	Backhaul	No Update to Provide	5/4/2010	
Long Lines	Backhaul	No Update to Provide	5/4/2010	
Long Lines	Backhaul	No Update to Provide	5/4/2010	
Lost Nation-Elwood Telephone Company	Fiber	No Update to Provide	4/13/2010	
Lynnville Telephone Company, Inc.	DSL	No Update to Provide		
Mabel Cooperative Telephone Company	DSL	No Update to Provide	4/8/2010	
Mahaska Communication Group	Fiber	No Update to Provide	5/10/2010	
Mahaska Communication Group	Fixed Wireless	No Update to Provide	5/10/2010	
Manning Municipal Communication & Television System Utility	Cable	No Update to Provide	4/22/2010	
Manning Municipal Communication & Television System Utility	Fixed Wireless	No Update to Provide	4/22/2010	
Marne & Elk Horn Telephone Company	DSL	No Update to Provide	2/11/2010	
Marne & Elk Horn Telephone Company	Fixed Wireless	No Update to Provide	2/11/2010	
Marne & Elk Horn Telephone Company	Backhaul	No Update to Provide	2/11/2010	
Martelle Cooperative Telephone Association	Cable	No Update to Provide	5/5/2010	
Martelle Cooperative Telephone Association	DSL	No Update to Provide	5/5/2010	
Massena Telephone Company	Backhaul	No Update to Provide	6/18/2010	
Massena Telephone Company	DSL	No Update to Provide	6/18/2010	
Mediacom Iowa, LLC	Cable	No Update to Provide	1/12/2010	
Mediapolis Telephone Company	DSL	No Update to Provide	4/14/2010	
Midlowa Net	DSL	No Update to Provide		
Midwest Broadband LLC	Fixed Wireless	No Update to Provide	7/6/2010	
Milford Cable TV Inc.	Cable	No Update to Provide	4/21/2010	
Minburn Communications	DSL	No Update to Provide	4/7/2010	
Minburn Communications	Fiber	No Update to Provide	4/7/2010	
Minburn Communications	DSL	No Update to Provide	4/7/2010	
Minburn Communications	Fiber	No Update to Provide	4/7/2010	
Minerva Valley Telephone Cablevision, Inc.	DSL	No Update to Provide	4/7/2010	
Modern Cooperative Telephone Company Inc.	DSL	No Update to Provide		
Monarc Technologies	Fiber	No Update to Provide	2/16/2011	
Mutual Telephone Company	DSL	No Update to Provide	1/25/2010	
Mutual Telephone Company	Fiber	No Update to Provide	1/25/2010	
Mutual Telephone Company of Morning Sun, Iowa	DSL	No Update to Provide	5/5/2010	
Mutual Telephone Company of Morning Sun, Iowa	DSL	No Update to Provide	5/5/2010	
Nexgen Integrated Communications, LLC	DSL	No Update to Provide		
Nexgen Integrated Communications, LLC	Fiber	No Update to Provide		
Northeast Iowa Telephone Company	DSL	No Update to Provide	4/13/2010	
Northeast Iowa Telephone Company	Fixed Wireless	No Update to Provide	4/13/2010	
Northern Iowa Telephone Company	DSL	No Update to Provide	1/25/2010	
Northwest Telephone Cooperative Association	DSL	No Update to Provide	2/17/2010	
Northwest Telephone Cooperative Association	Fixed Wireless	No Update to Provide	2/17/2010	
Northwest Telephone Cooperative Association	Backhaul	No Update to Provide	2/17/2010	
Ogden Telephone Company	DSL	No Update to Provide	3/17/2010	
Ogden Telephone Company	Backhaul	No Update to Provide	3/17/2010	
Olin Telephone Company, Inc.	DSL	No Update to Provide	2/23/2010	
Onslow Cooperative Telephone Association	DSL	No Update to Provide	2/3/2010	
Oran Mutual Telephone Company	DSL	No Update to Provide	2/8/2010	
Osage Municipal Communications Utility	Cable	No Update to Provide	5/18/2010	
Osage Municipal Communications Utility	Fixed Wireless	No Update to Provide	5/18/2010	
Palmer Mutual Telephone Company	DSL	No Update to Provide	1/21/2010	
Palo Cooperative Telephone Association	DSL	No Update to Provide	5/19/2010	
Panora Communications Cooperative	Fixed Wireless	No Update to Provide	1/29/2010	
Panora Communications Cooperative	Fixed Wireless	No Update to Provide	1/29/2010	
Panora Communications Cooperative	Fiber	No Update to Provide	1/29/2010	
Panora Communications Cooperative	Cable	No Update to Provide	1/29/2010	
Panora Communications Cooperative	Cable	No Update to Provide	1/29/2010	
Partner Communications Cooperative	DSL	No Update to Provide	5/15/2010	
Partner Communications Cooperative	Cable	No Update to Provide	5/15/2010	

Prairieburg Telephone Company, Inc.	Fixed Wireless	No Update to Provide	3/25/2010	
Premier Communications	Cable	No Update to Provide	1/25/2010	
Radcliffe Telephone Company, Inc.	Fiber	No Update to Provide	4/26/2010	
Radcliffe Telephone Company, Inc.	Backhaul	No Update to Provide	4/26/2010	
Readlyn Telephone Company	DSL	No Update to Provide	2/23/2010	
Readlyn Telephone Company	Fiber	No Update to Provide	2/23/2010	
Reasnor Telephone Company, LLC	DSL	No Update to Provide		
RingTel Communications	DSL	No Update to Provide	2/17/2010	
River Valley Telecommunications Coop	DSL	No Update to Provide	3/23/2010	
River Valley Telecommunications Coop	Fiber	No Update to Provide	3/23/2010	
River Valley Telecommunications Coop	Fixed Wireless	No Update to Provide	3/23/2010	
Rockwell Cooperative Telephone Association	DSL	No Update to Provide	5/12/2010	
Rockwell Cooperative Telephone Association	Fiber	No Update to Provide	5/12/2010	
Rockwell Cooperative Telephone Association	Backhaul	No Update to Provide	5/12/2010	
Royal Telephone Company	Fiber	No Update to Provide	2/12/2010	
Sac County Mutual Telephone Co.	DSL	No Update to Provide	2/15/2010	
Sac County Mutual Telephone Co.	Backhaul	No Update to Provide	2/15/2010	
Scranton Telephone Company	DSL	No Update to Provide	2/1/2010	
Scranton Telephone Company	Backhaul	No Update to Provide	2/1/2010	
Searsboro Telephone Company	DSL	No Update to Provide		
Sharon Telephone Company	DSL	No Update to Provide	5/20/2010	
Sharon Telephone Company	Fiber	No Update to Provide	5/20/2010	
Sharon Telephone Company	Fixed Wireless	No Update to Provide	5/20/2010	
Sharon Telephone Company	Backhaul	No Update to Provide	5/20/2010	
Sioux Valley Wireless	Fixed Wireless	No Update to Provide	6/7/2010	
South Slope Cooperative Telephone Company	DSL	No Update to Provide	2/2/2010	
South Slope Cooperative Telephone Company	Fiber	No Update to Provide	2/2/2010	
Spencer Municipal Utilities	Fiber	No Update to Provide	2/18/2010	
Spencer Municipal Utilities	Backhaul	No Update to Provide	2/18/2010	
Spencer Municipal Utilities	Cable	No Update to Provide	2/18/2010	
Spring Grove Cooperative Telephone Co.	Fiber	No Update to Provide		
Springville Cooperative Telephone Association, Inc.	DSL	No Update to Provide	2/15/2010	
Sully Telephone Association Inc.	DSL	No Update to Provide	4/28/2010	
Sully Telephone Association Inc.	Fiber	No Update to Provide	4/28/2010	
Superior Telephone Cooperative	DSL	No Update to Provide	5/24/2010	
Swisher Telephone Company	Fiber	No Update to Provide	2/2/2010	
Templeton Telephone Company	DSL	No Update to Provide	3/12/2010	
Templeton Telephone Company	Backhaul	No Update to Provide	3/12/2010	
Terri Telephone Cooperative	DSL	No Update to Provide	2/12/2010	
Titonka Telephone Company	DSL	No Update to Provide	5/4/2010	
Titonka Telephone Company	Backhaul	No Update to Provide	5/4/2010	
Traer Municipal Utilities	Fixed Wireless	No Update to Provide	4/14/2010	
USA Communications	DSL	No Update to Provide	1/27/2010	
USA Communications	Cable	No Update to Provide	1/27/2010	
USA Communications	Fiber	No Update to Provide	1/27/2010	
Van Buren Telephone Co Inc.	DSL	No Update to Provide	1/26/2010	
Van Horne Cooperative Telephone Company	DSL	No Update to Provide	5/18/2010	
Van Horne Cooperative Telephone Company	Fiber	No Update to Provide	5/18/2010	
Van Horne Cooperative Telephone Company	Backhaul	No Update to Provide	5/18/2010	
Walnut Telephone Company	Fixed Wireless	No Update to Provide	4/14/2010	
Walnut Telephone Company	Backhaul	No Update to Provide	4/14/2010	
Webb-Dickens Telephone Corporation	Fiber	No Update to Provide	1/25/2010	
Webster-Calhoun Cooperative Telephone Association	Fiber	No Update to Provide	5/21/2010	
Wellman Cooperative Telephone Association	DSL	No Update to Provide	5/19/2010	
Wellman Cooperative Telephone Association	Fixed Wireless	No Update to Provide	5/19/2010	
West Iowa Telephone Company	DSL	No Update to Provide	1/27/2010	
West Iowa Telephone Company	Cable	No Update to Provide	1/27/2010	
West Liberty Telephone Company	Fiber	No Update to Provide	1/25/2010	
West Liberty Telephone Company	Backhaul	No Update to Provide	1/25/2010	
Western Iowa Networks	DSL	No Update to Provide	2/22/2010	
Western Iowa Networks	Fiber	No Update to Provide	2/22/2010	
Western Iowa Networks	Fixed Wireless	No Update to Provide	2/22/2010	
Western Iowa Telephone Association	DSL	No Update to Provide	4/22/2010	
				[SEPT-16-11 Matthew Brunt] Correction: Satellite data is being submitted and was not included in the April 2011 submission. While coverage is currently the entire state boundary, work continues on having more granular data available.
WildBlue Communications, Inc.	Satellite	No Update to Provide	1/8/2010	
Winnebago Cooperative Telecom Association	DSL	No Update to Provide	1/22/2010	
Winnebago Cooperative Telecom Association	Fiber	No Update to Provide	1/22/2010	
Winnebago Cooperative Telecom Association	Fixed Wireless	No Update to Provide	1/22/2010	
Winnebago Cooperative Telecom Association	Backhaul	No Update to Provide	1/22/2010	
Woolstock Mutual Telephone	DSL	No Update to Provide	5/19/2010	
Woolstock Mutual Telephone	Fixed Wireless	No Update to Provide	5/19/2010	
WTC Communications, Inc.	DSL	No Update to Provide	3/22/2010	
WTC Communications, Inc.	Fixed Wireless	No Update to Provide	3/22/2010	
WTC Communications, Inc.	Cable	No Update to Provide	3/22/2010	
Wyoming Mutual Telephone Company	DSL	No Update to Provide	2/19/2010	
Cogent Communications, Inc.	Backhaul	No Update Provided - Use Last Submission Data		
Fenton Co-Op Telephone Company	DSL	No Update Provided - Use Last Submission Data	4/16/2010	
Prairie iNet	Fixed Wireless	No Update Provided - Use Last Submission Data	3/16/2010	
Knology of the Plains, Inc.	Backhaul	Provider Gathering Data	7/13/2011	
Netconnect	Fixed Wireless	Solicited Initial Data		
				[SEP-02-11 Matthew Brunt] Provider stated that they do not resell their backhaul, but that it's only for internal use.
Community Digital Wireless, LLC	Backhaul	Other	5/6/2010	
				[SEP-08-11 Wes Kerr] Multiple outreach attempts were conducted but no response was received. PAETEC was bought out during the collection phase of this round by Windstream and we intend to be able to include the PAETEC coverage as a part of the Windstream footprint during the next round.
PAETEC Communications, Inc.	Backhaul	Other		
				[AUG-08-11 Layne Wagner] I received an e-mail response from the provider stating that all of Panora Communications Cooperative DSL has been upgraded to FTTH.
Panora Communications Cooperative	DSL	Other	1/29/2010	
				[JUL-19-11 Matthew Brunt] Provider stated that they do not wish to provide their fiber coverage at this time.
Eastlight, LLC	Fiber	Refused to Participate		

Mechanicsville Telephone Company	DSL	Refused to Participate	[AUG-04-11 Layne Wagner] I spoke with provider and they stated they refused to participate last year and they haven't changed their mind this year.
Mechanicsville Telephone Company	Cable	Refused to Participate	[AUG-04-11 Layne Wagner] I spoke with provider and they stated they refused to participate last year and they haven't changed their mind this year.
Amberwave Communications	Fixed Wireless	Non-Responsive to Multiple Attempts	In addition to multiple contact attempts made between June 22, 2010 and January 27, 2011, 6 additional attempts were made this period.
Coon Creek Telecommunications Corp.	DSL	Non-Responsive to Multiple Attempts	In addition to multiple contact attempts made between July 30, 2010 and February 11, 2011, 5 additional attempts were made this period.
Global Crossing Telecommunications, Inc.	Backhaul	Non-Responsive to Multiple Attempts	In addition to multiple contact attempts made between July 1, 2010 and February 17, 2011, 3 additional attempts were made this period.
RuralWaves Wireless Internet	DSL	Non-Responsive to Multiple Attempts	In addition to multiple contact attempts made between August 5, 2010 and February 18, 2011, 4 additional attempts were made this period.
RuralWaves Wireless Internet	Fixed Wireless	Non-Responsive to Multiple Attempts	In addition to multiple contact attempts made between August 5, 2010 and February 18, 2011, 4 additional attempts were made this period.
Schaller Telephone Company	DSL	Non-Responsive to Multiple Attempts	In addition to multiple contact attempts made between August 3, 2010 and February 10, 2011, 5 additional attempts were made this period.