

# **State of Arizona**



## **Arizona Broadband Assessment Project (AZ BAP)**

### **Methodology White Paper**

**Submission 7 - April 1, 2013**

# State of Arizona

## Arizona Strategic Enterprise Technology Office (ASET)

### Arizona Broadband Assessment Project Methodology White Paper

Submission 7 - April 1, 2013

#### Table of Contents

|  | <u>Page</u> |
|--|-------------|
| Arizona Broadband Assessment Project Overview                            | 3           |
| Broadband Data Description   | 3           |
| Broadband Provider Participation   | 4           |
| Broadband Providers Included   | 4           |
| Broadband Providers Identification Strategy                              | 4           |
| Broadband Providers Engagement Strategy                                  | 5           |
| Non-Disclosure Agreements (NDA)  | 6           |
| Data Collection and Integration  | 8           |
| Primary Data Collection  | 8           |
| Data Intake and Validation Application (DIVA)                            | 9           |
| Community Anchor Institutions (CAI)                                      | 12          |
| Project Data Flow and Security   | 13          |
| Validation   | 15          |
| Validation Overview  | 15          |
| Validation Data Sources  | 16          |
| Arizona Broadband Map  | 17          |
| Arizona Broadband Map Overview   | 17          |
| Arizona Broadband Map Details  | 18          |
| Arizona Broadband Map Tutorials  | 18          |
| Arizona Broadband Policy Initiatives                                     | 20          |
| Appendix A - Arizona Broadband Provider Changes and Corrections Document | 24          |
| Appendix B - Arizona Broadband Coverage Maps for Spring 2013             | 28          |
| Appendix C - Arizona Broadband Coverage Tables for Spring 2013           | 39          |
| Appendix D - Data Submittal Technical Appendix for Spring 2013           | 56          |

# Arizona Broadband Assessment Project Overview

The purpose of the Arizona Broadband Assessment Project (AZ BAP) is to identify both the availability and speed of broadband services, and the location of broadband infrastructure throughout Arizona, including middle mile infrastructure and Community Anchor Institutions (CAIs). This project is provided through the American Recovery and Reinvestment Act of 2009 (ARRA) and the Broadband Data Improvement Act (BDIA), and in conjunction with the National Telecommunications and Information Administration (NTIA) and the Federal Communications Commission (FCC). AZ BAP is managed by the Arizona Strategic Enterprise Technology Office (ASET) under the Arizona Department of Administration (ADOA) in partnership with the Arizona State Land Department (ASLD), contractor Data Site Consortium, Inc. and their GIS subcontractor, TerraSystems Southwest (TSSW).

Submission 7 for the broadband availability and CAI data set was duly submitted to NTIA prior to the April 1, 2013 deadline. Spring 2013 was the seventh of ten semi-annual submissions by the State of Arizona and attempts to capture and reflect broadband availability and conditions in the field as of December 31, 2012. See Appendix A - Arizona Broadband Provider Changes & Corrections Document for a list of included Broadband Providers and relevant notes for each.

## Broadband Data Description

For the State of Arizona broadband availability data set submitted to NTIA April 1, 2013, the summary of the data submission follows:

**BB\_Service\_CensusBlock** - 457,560 Census 2010 polygons less than or equal to two square miles in area representing the service area of 38 broadband providers (unique FRN's). Multiple instances of a census block polygon may exist where a provider has two or more technology types and/or end-user categories in a block or multiple providers have service in that block. Only the fastest upload and download speeds in a census block are reported for a given provider, technology type and end-user category. Some providers supplied a list of census blocks they serve, while others reported their service as a list of addresses or as census blocks/road segments or a service polygon in KML or shapefile format. Addresses were geocoded using a combination of local, TIGER 2010 and Navteq road networks and then aggregated to census blocks. Footprint geography was used to select the underlying census blocks using a "centroid in" rule.

**BB\_Service\_RoadSegment** - 59,964 TIGER 2010 road segments that fall inside Census 2010 polygons greater than two square miles representing 27 broadband providers (unique FRN's). Multiple instances of a road segment may exist where a provider has two or more technology types or end-user categories on a segment or multiple providers have service on the segment. Only the fastest upload and download speeds on a segment are reported for a given provider, technology type and end-user category. The TIGER segments have all been clipped to fit entirely within a census block. Local road networks may overlap into the census block geography. The address ranges were not interpolated to accommodate any clipping. Some

providers supplied a list of TIGER road segments they serve by TLID number, while others reported their service as a list of address ranges or as a road segment or service polygon (KML or shapefile). Address ranges were geocoded and then aggregated to census blocks. Footprint geography was used to select the underlying road segments using a “centroid in” rule.

**BB\_Service\_Wireless** - 35 wireless service area polygons representing 35 broadband providers. Polygons fully or partially overlap where a single provider offers service over two or more technology types or spectrums or where multiple providers offer service in an area. Only the fastest upload and download speeds are reported for a given provider, spectrum and technology type. Wireless providers submitted their service area in either KML or shapefile formats. In some cases the Arizona Broadband Mapping project consultant “reverse engineered” a service KML file from publicly available data sources on tower locations, technology types and spectrum information. These service areas were shared back with the provider with varying levels of response.

**BB\_Service\_MiddleMile** - 842 middle mile points representing 21 broadband providers. Middle mile points were generated from provider data using either latitude/longitude or address information. Elevation attributes were added by overlaying a statewide 10-meter Digital Elevation Model and moving the elevation attribute into the database.

## **Broadband Provider Participation**

### **Broadband Providers Included**

During this cycle we received data from a total of 76 entities, which included 58 Broadband Providers (BPs), 10 resellers and 8 entities classified as Other. There were 2 BPs who refused to participate and provide data. Those who were non-responsive included 29 BPs and 1 reseller.

For more details see Appendix A - Arizona Broadband Provider Changes & Corrections Document for a list of included Broadband Providers and relevant notes for each.

### **Broadband Providers Identification Strategy**

The process of identifying BPs in this cycle consisted of verifying that BPs participating in the previous cycle are still relevant and under the same ownership, as well as identifying previously unknown BPs through referrals, research, and analysis of speed test results. The whole nature of the Arizona Broadband Assessment Project (AZ BAP) revolves around data collection from relevant BPs, thus the comprehensive identification of relevant BPs active in the Arizona market and definition and determination of relevancy are the key steps in maintaining an up to date universe of target BPs for subsequent engagement. Additionally, since the market is dynamic, as BPs go out of business, merge, startup or otherwise transition, an ongoing strategy and actions for adding to and updating the relevant BP universe is required. We maintain a not-in-play list on the wiki to assist in properly classifying BPs over time and codifying our research, interactions, and findings.

## Broadband Providers Engagement Strategy

The initial E-Mail Communications Package was developed as a collaborative effort among Data Site Consortium Inc. (DSCI), Arizona Strategic Enterprise Technology Office (ASET), and Arizona State Land Department (ASLD). It included an introductory cover letter under the signature of the ASET Director (State of Arizona CIO), followed by a more detailed and specific letter from DSCI, a copy of the standard project NDA, and an Arizona Broadband Provider Technical Appendix. The two letters give the project explanation, value proposition, and call to action with the NDA and Technical Appendix yielding expanded and supporting documentation.

In subsequent data collection cycles, DSCI has developed a series of standard cover letters that are adapted as needed (perhaps based on elements from previous conversations or presentation of anomalous findings) to comprise the body of the personalized letter and cover e-mail for transmittal at the beginning of the “data ask” cycle. DSCI fields any BP responses by e-mail, letter, phone, or in-person, answering any questions from the provider and moving towards their fresh data submittal.

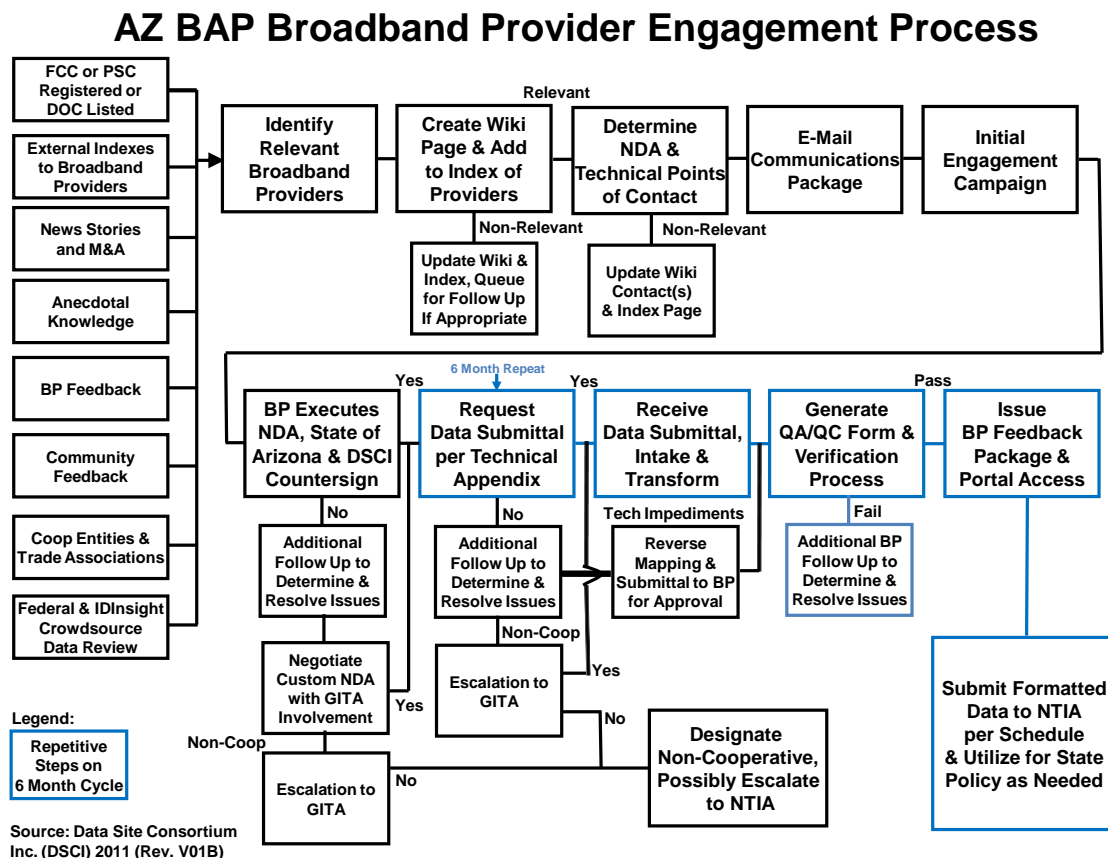
A Data Ask Letter goes to the majority of participating BPs who have submitted data in past cycles. A variant, the BP Reverse Mapping Letter goes to another dozen or so participating BPs whom we reverse map and then work with to verify. Another variant, the BP Cooperation Letter only goes to newly identified BPs whom we are seeking to engage and get under NDA. The Technical Appendix is included as part of the package to all BPs.

Some of the salient points covered in this cycle in the communication package to the BPs include the following:

- Every cycle our team holds extensive collaborative review sessions in a GIS environment to evaluate and verify a BP’s data. We have found including BP representatives in these sessions to visually and interactively review their data submittal with us proves beneficial to all. It allows corrections and adjustments to be made in real-time and helps assure the high data quality. We seek to schedule such a session with BPs interested in reviewing their data or when needed to help resolve questions and noted anomalies.
- As broadband technologies and deployments continue to evolve, the NTIA has expanded and/or shifted the acceptable speeds for some technology types. We request that BPs refer to the current Technical Appendix and its speed vs. technology type chart especially and specifically note if they’re now delivering higher broadband speeds than previously.
- Some Broadband Providers have submitted incremental information in the past. We ask that BPs submit a complete current estimate of their Arizona broadband coverage each cycle. Complete coverage submittals are easier to process and less error prone.
- Additionally, the State would like to collect information as to the actual customer addresses passed (addresses that BPs can provide service to in under 7 days) or customer addresses served by them. This would allow for more detailed analysis to inform policy directions, but is not provided by most BPs.

After a BP's data has been transformed and put through the verification process, a BP Feedback Letter is prepared and sent noting any issues or anomalies accompanied by a series of map visualizations and an invitation to follow up with any questions, corrections or concerns.

Below is a diagram that illustrates the overall Provider Engagement Process.



## Non-Disclosure Agreements (NDA)

### NDA Overview

Because initial NDAs between the State of Arizona and our providers had a two-year term, we needed to generate new NDAs with our providers for Years 3-5 of the program. We continued this activity and have renewed NDAs with 38 of our providers. We will continue this effort until we have fully executed NDAs with all providers that so desire. While some BPs opted out of the NDA process, the majority chose to participate, by negotiating and signing a new NDA. The providers that chose to opt-out fall into two groupings. A first group consists of providers that were not sufficiently concerned with possible misuse of their data to be motivated to execute a NDA. All providers within this group provided data as required for the submittals to date. A second group consisted of providers that chose to largely boycott the mapping process. Members of the second group generally have not provided data. However, we have been successful in interfacing with the majority of these providers via our reverse mapping processes wherein we obtain relevant data from third party sources and present the data to each provider for discussion and corrections before incorporating it into the biannual data submittal.

## NDA Considerations and Related Rationale

Within the context of the Program, we have deployed a NDA when sharing confidential information between or among trusted parties. The NDA utilized comprises an agreement wherein the provider, the discloser of the information, achieves specified safeguards and the receiver of the information is allowed specific uses of the information for a specified period.

Generally, we have included both the safeguards and the specific uses, and have framed these constructs within a consistent set of duties and obligations to which the parties mutually agree. Important Program NDA framing issues include:

1. **Definition of the parties and their respective objectives (generally whereas statements).** Generally the Program NDAs are construed between a disclosing party (generally a Broadband Provider) and a recipient party (generally the State), wherein the disclosing party may be an owner of the confidential information or merely may have a present right-of-use of the information.
2. **Definition of the confidential information.** Generally, the parties negotiate what information is confidential. This negotiation generally strikes a reasonable compromise between the information discloser wants for broad inclusive language and the recipient's desired narrow and specific language. Often such definitions are constructed so as to include both general categories of information followed by specific instances within those categories.
3. **Exceptions to confidential information.** Exceptions described both as general categories and specific instances are equally important to adequately characterizing the confidential information.
4. **Ownership of the confidential information.** Often the confidential information provided by a disclosing party will not be owned by that party, but is rightfully possessed under an existing license or similar right-of-use of the information. Thus, such limitations must also be described, appropriate indemnities devised, and notice provided to the underlying property owner associated with the confidential information.
5. **Definition of obligations of confidentiality.** Obligations of confidentiality focus to acceptable use and unacceptable misuse of the information provided by the recipient. Such obligations often also cover secondary disclosures by agents of the recipient with appropriate need-to-know requirements and recordkeeping.
6. **Exceptions to the obligations of confidentiality.** Confidential information by its nature must be confidential to someone or in some respect. Once such information loses its confidential nature, it generally becomes freely available to all comers. Because information that is initially thought to be confidential may not be so, the NDAs delineate such exceptions. Thus, the NDAs list specific means under which disclosed information is not deemed confidential, such as the disclosed information becoming publicly known by acts of others or discovered by the recipient by other means.

7. **Definition of what constitutes breach of the agreement.** Gravamen of breach of NDAs centers on intentional and unintentional disclosure of the information within the established term of the agreement. Related considerations include materiality of a disclosure and whether it is volitional. The NDAs identify the types of breach in detail. As with the definition of confidential information, the NDAs also specify instances that do not constitute breach.
8. **Agreement of available remedies for each type of breach.** Generally, all breaches require that the breaching party immediately notices the disclosing party of such breach. Such notice should occur in sufficient time that the disclosing party can intervene for protecting its rights to the confidential information where possible. Further, it is appropriate that the recipient agree that certain breaches equate to irreparable harm to the disclosing party, giving the disclosing party injunctive rights. Money damages may also be appropriate or the immediate return of all confidential information to the disclosing party. The NDAs generally minimize language relating to money damages.
9. **Term of the agreement.** A NDA term generally entails defining a period required for the parties to effectively disclose and utilize the information here initially a 2-year term, followed by a 3-year term. At the end of the term, and potential extensions, generally the recipient must either return or destroy all confidential data and provide an affidavit to the disclosing party that it returned or destroyed the information. Typically, the NDAs also include a second, longer term during which the parties will agree to maintain confidentiality of the information
10. **Miscellaneous issues.** These issues include agreed to law, integration, assignment rights, notice addresses, dispute resolution means, and the like by the parties.

## **Data Collection and Integration**

### **Primary Data Collection**

#### **Overview**

DSCI solicits and receives the BP broadband data submittals, doing intake processing and usability crosschecks. DSCI's GIS subcontractor TerraSystems Southwest (TSSW) corrects any format issues, transforms the data to prepare it for federal submittal, documents the technical steps performed during that preparation for quality assurance and BP feedback, leads the team in collaborative data verification sessions, as well as supports further State use of the data in mapping and policy processes.

#### **Reverse Mapping Role & Processes**

The use of reverse mapping was key to depicting broadband coverage for: Broadband Providers unable to supply coverage area information; Broadband Providers with incomplete coverage area information; and Non-responsive Broadband Providers. Regardless of the scenario, DSCI and TSSW employed a number of logical methods to derive "where and which" broadband



services a Broadband Provider likely had available. Some of the key elements used to initiate reverse mapping included:

- FCC Form 477 data, though dissolving census blocks greater than 2 square miles into applicable road segments required special techniques and attention
- Central Office (CO)/Digital Subscriber Line Access Multiplexer (DSLAM) location (wireline) - used in conjunction with distance buffers to best determine "where" outside plant infrastructure would reside. We used multiple public information sources to discover CO and DSLAM locations.
- Tower location (wireless) - used propagation models to determine "coverage/reach" based on services provided (frequencies, lat/long, terrain). We used an "E-coverage" tool from Wireless Applications Corp as well as "Radio Mobile's" radio frequency coverage tools.
- Service Book/Offerings - usually determined through publicly available information (technology of transmission, speeds, etc.).
- Tribal boundary information (From FCC) - GIS shapefile used to determine Tribal boundaries and census blocks/road segments contained therein.
- Public Information Sources - from various sources including BPs' own websites to provide a "picture" of their network, services, and coverage.

Such reverse map estimations of the BP's coverage and technology are then presented back to the BP for confirmation or feedback leading to iterative adjustments, sometimes via collaborative online viewing sessions, and resulting in a "best guess" for their current delivery footprint. BPs without current GIS capabilities were frequently impressed with our techniques and interested in using the reverse mapping outputs internally and externally.

## **Data Intake and Validation Application (DIVA)**

### **DIVA Overview**

The Data Intake and Validation Application (DIVA) was developed by TerraSystems Southwest (TSSW) as a subcontractor to DSCI under contract with ASET in support of the Arizona Broadband Assessment Project (AZ BAP). DIVA is a Windows desktop application designed to transform raw Broadband Provider data about the location, technology and speed of broadband services into a form that can be cleanly linked to GIS layers and imported into the NTIA standard national broadband mapping program geodatabase.

A key goal of the DIVA design was to reduce data processing time while increasing data integrity. A secondary goal was to create a freely distributable software tool that Providers and other State broadband organizations could apply to their data intake and validation tasks. Alternative approaches, such as integrating with ArcGIS or data translation software like FME were not pursued as that would mean users would have to purchase those products at a significant expense while DIVA was specifically designed and tuned for the task at hand.

DIVA does not perform any spatial validation or processing. DIVA was scoped as “pre-GIS” software, designed only to speed and improve the processing of Provider data to a point where it could be more cleanly geocoded or linked to NTIA GIS layers. Based on this design criteria, DIVA is not very useful for wireless service shapefile deliveries where the feature counts (data Records) are a couple of hundred, or less, and are in more or less proper SBDD format. However, it really shines in processing address, census block, and road segment submittals of tens or hundreds of thousands of records, and where Providers have not followed the SBDD coding scheme.

## **DIVA Capabilities**

DIVA offers a rich user interface for exploring and processing Provider broadband data into a form that can more easily be linked to NTIA-required GIS feature classes. Some of its key features are listed below.

- **Configurability** - DIVA offers many opportunities for configuration. New Provider identification information can be imported and applied to every Provider submittal. New releases of the SBDD geodatabase are read and up-to-date Rules are automatically created and applied. Processes and Rules in DIVA are very general and may be user-configured to achieve various results.
- **Consistency** - a very structured approach to data processing is embedded in the design of DIVA. This begins with the clear definition of data elements and their relationship to one another in an Object Data Model. Consistency is also inherent in the clear definition of Processes and Rules that can be applied to the data and in the way that Processes and Rules are used to transform and validate the output data. In the rush of meeting data-delivery deadlines it is easy to forget or misapply data processing steps. By automating much of the required processing, DIVA increases the amount of time that a user has to actually review and check data, and makes it easier for the user to achieve consistent results in the exported data sets.
- **Re-usability** - Users can define a set of Processes within a particular Reporting Period as a Template and then apply the Template to new Input Files. Rules are uniformly applied to Providers for each Reporting Period. This includes user-defined rules: once defined and applied, they will automatically be applied to subsequent Submittals.
- **Processing Documentation** - metadata (e.g. notes) regarding Providers, Submittals, Input Files and other elements may be added at any time using the “Edit Metadata” button on the Status Bar. Notes can be viewed or exported at any time for cutting and pasting into NTIA documentation. These notes, plus the actual Input File(s) associated with a Submittal, the assigned Processes, Rule violations and final output, constitute DIVA’s Metadata system. A good example of metadata stored in a Process is the translation table from Provider actual speed values to NTIA speed tier codes: the value mapping is preserved and can be reviewed in DIVA by opening up the applicable Submittal and generating a detailed Input File report or by right-clicking on the Translation Process in the Processes tab.

## DIVA Impact

The efficiencies resulting from the application of DIVA to Provider data are substantial. In the first submittal period in Spring 2010, a number of larger providers would consume 24-40 hours of processing time to evaluate, transform, quality check and export to SBDD database format. Processing a similar set of data in the latest submittal period (Spring 2013) using DIVA is a 2-4 hour process for even the most complex BP data submittals.

A substantial portion of this improvement is the result of (a) knowing the data and what to expect from a given Provider and (b) improved manual processing, especially on the GIS side. However, another substantial portion of the improvement has come from the integrated data evaluation, checking, transformation, and validation and export capabilities of DIVA itself. We estimate that DIVA can reduce processing time in half for large address or census block submittals from the Providers. This efficiency is gained from having all the evaluation, transformation and validation tools available in a single interface instead of applying a variety of application software packages in varying order to each Provider file in each Reporting Period.

DIVA was designed and implemented to be quite portable and readily usable by other grantees. North Carolina has requested detailed technical information on DIVA and the NTIA and other grantees have expressed interest. Arizona is glad to share all relevant information and source code, including a comprehensive user manual as well as guidance in implementing the application to other grantees at no cost. The only real caveat is that we can offer only quite limited tech support without specific coverage of costs for time spent.

Below is an image of the control panel for the submittals tab, which contains all the controls a user needs to manage the intake of provider data.

DIVA v5.2

Submittals | Processes | Rules | Output | Utilities | Reports | About

Submittal Creation / Selection Info

Input File: H:\Broadband\N03\_Data\_Processing\aa2012\_01\_Spring\TW\_Telecom\TW\_NearResults.txt (1) [Browse] [Clear] [Preview]

Provider (5): Name: TW Telecom of Arizona LLC, DBA: TW Telecom of Arizona LLC, FRN: 0004352274

Submittal Type (6): Service Address

Template Processing Set (7): ☐ Use current Template Processing Set

Reporting Period (8): ☒ Show All Periods, Spring 2012

Submittal Actions (9): [New] [Add] [Delete]

Existing Submittals: Selected Submittal is Target of all Editing

Filter Submittals by: ☐ Providers ☐ Periods ☐ Types

| Submittal ID | Provider ID | Provider Name             | Submittal Period | Submittal Type  |
|--------------|-------------|---------------------------|------------------|-----------------|
| 2            | TW          | TW Telecom of Arizona LLC | Spring 2012      | Service Address |
| 6            | ME          | Mediacom South East LLC   | Spring 2012      | Service Address |

Selected Submittal's Input File Information

twtelecomofarizonallc\_address\_availability\_AZ (11) [Delete] (12) [Load] (13) Processing Set (14): TW\_S12\_AD\_2 [Copy] [Paste]

Help | Input Data Analysis | Output Data Review | Filter Records | Edit Metadata

Status:  
Provider Name: TW Telecom of Arizona LLC  
Reporting Period: Spring 2012  
Submittal Type: Service Address  
Input File Name: twtelecomofarizonallc\_address\_availability\_AZ

## Community Anchor Institutions (CAI)

Data for the Community Anchor Institutions (CAIs) resides in many different locations throughout Arizona and were collected from data custodians and/or data integrators throughout the State. This effort has two major components, the identification and geo-location of the CAI entities and the collection of data related to the status of their broadband usage. Both of these components have significant challenges for development and maintenance. The State does not currently have any centralized databases that could serve as a core basic backbone for CAI data development. Thus a sizeable data collection and standardization effort has been undertaken and matured over time. The Arizona Broadband Assessment Project (AZ BAP) provides impetus for one of the first State efforts to consolidate CAI data into one database.

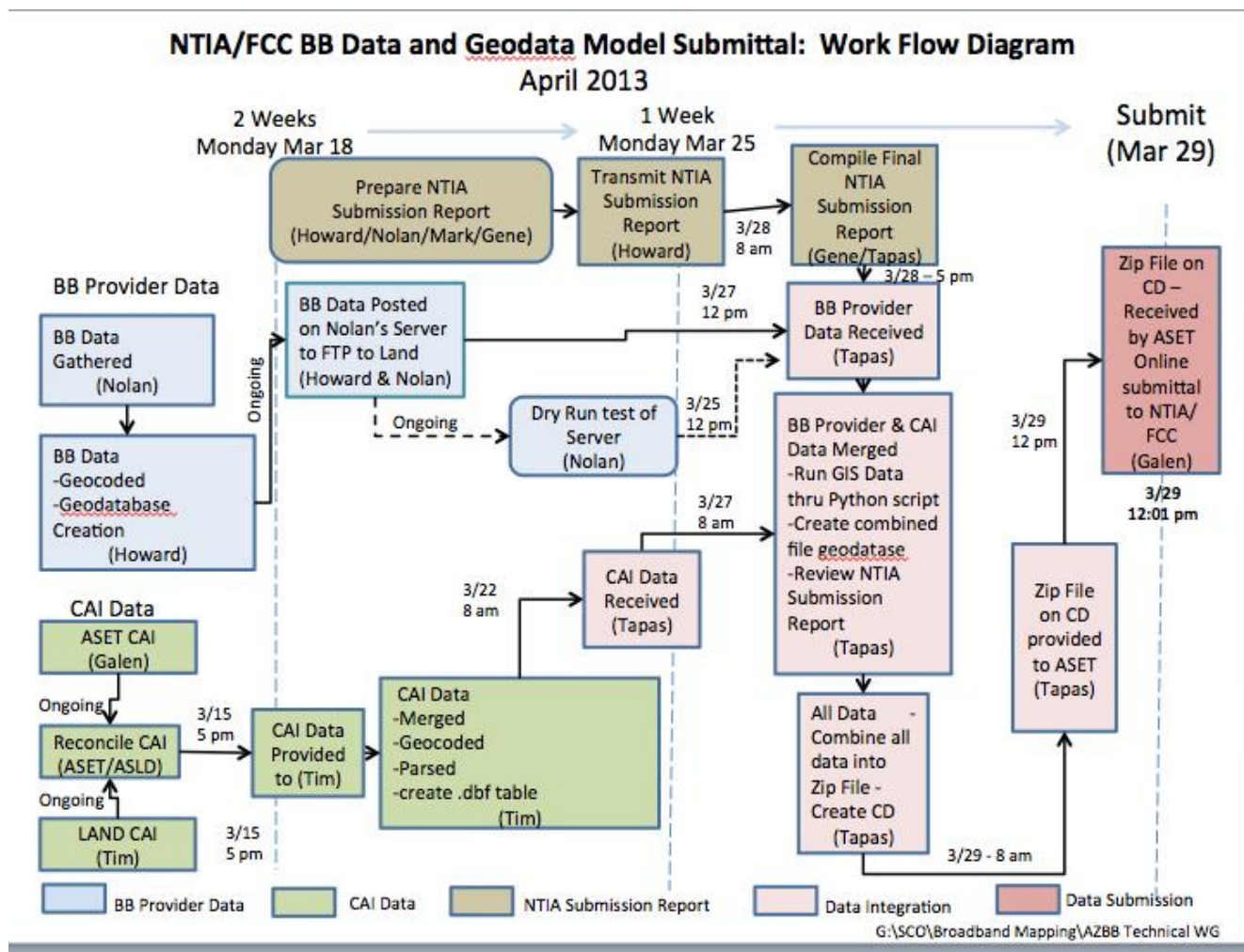
A considerable effort in basic data development working with local government websites and one to one contacts has been required to address some basic aspects of the CAI data collection. Numerous organizations in Arizona maintain locational information regarding some categories of CAI data but these are all of varying formats and currency. In many cases the project has had to assist CAI location data custodians in the update of some aspects of the basic locational data. The Project also is, in most cases, the first time that CAI managers have developed information regarding the level of broadband services for their institutions. This poses a host of challenges regarding a large number of existing processes in many organizations.

ASET has added a number of additional CAI record elements in a variety of separate spreadsheets for different categories of CAIs. A sample of such additional record elements from the preparatory files for the Spring 2013 submittal are included below, though the files are stripped back to NTIA CAI data elements before submittal. A complete list of additional variables (spreadsheet column names) for Arizona's CAI extensions from a sample Spring 2013 preparatory spreadsheet is shown below for reference:

|            |              |            |            |
|------------|--------------|------------|------------|
| OBJECTID   | ZIP5         | Rur        | NOTES_ACTU |
| KEY_       | ZIP4         | BB1_BBIS   | AZ_BB1_UP_ |
| KEY_NUM    | ADD_SRC      | BB1_ISP    | AZ_BB1_ACT |
| OLD_KEY    | PHONE        | BP_LNAME   | BB1_DWN_MB |
| CTDIS      | TYPE NOTES   | BP_FNAME   | BB1_DWN    |
| AGENCY_COD | CAICAT       | BP_EMAIL   | BB1_POS    |
| ANCHORNAME | PRE_CAICAT   | BP_PHO     | BB1_COST   |
| ADDRESS    | SUB_CAICAT   | OTHER_INFO | BB_DOL_MBP |
| BLDGNBR    | CAIID LL_MET | INFOSRCCOM | BB1_NOTES2 |
| PREDIR     | LL_DATE      | BB1DMARC   | BB1_NOTES  |
| STREETNAME | GC_TYPE      | AZ_NUM_CIR | Lat1       |
| STREETTYPE | GC_ERROR     | BB1_DATE   | Long1      |
| SUFFDIR    | GC_FIX       | NOTES_BB1_ | Longitude  |
| CITY_1     | FULLFIPSID   | BB1_PIPE   | Latitude   |
| COUNTY     | FK           | BB1_UP_MBP |            |
| STATECODE  | FKGOV        | BB1_UP     |            |

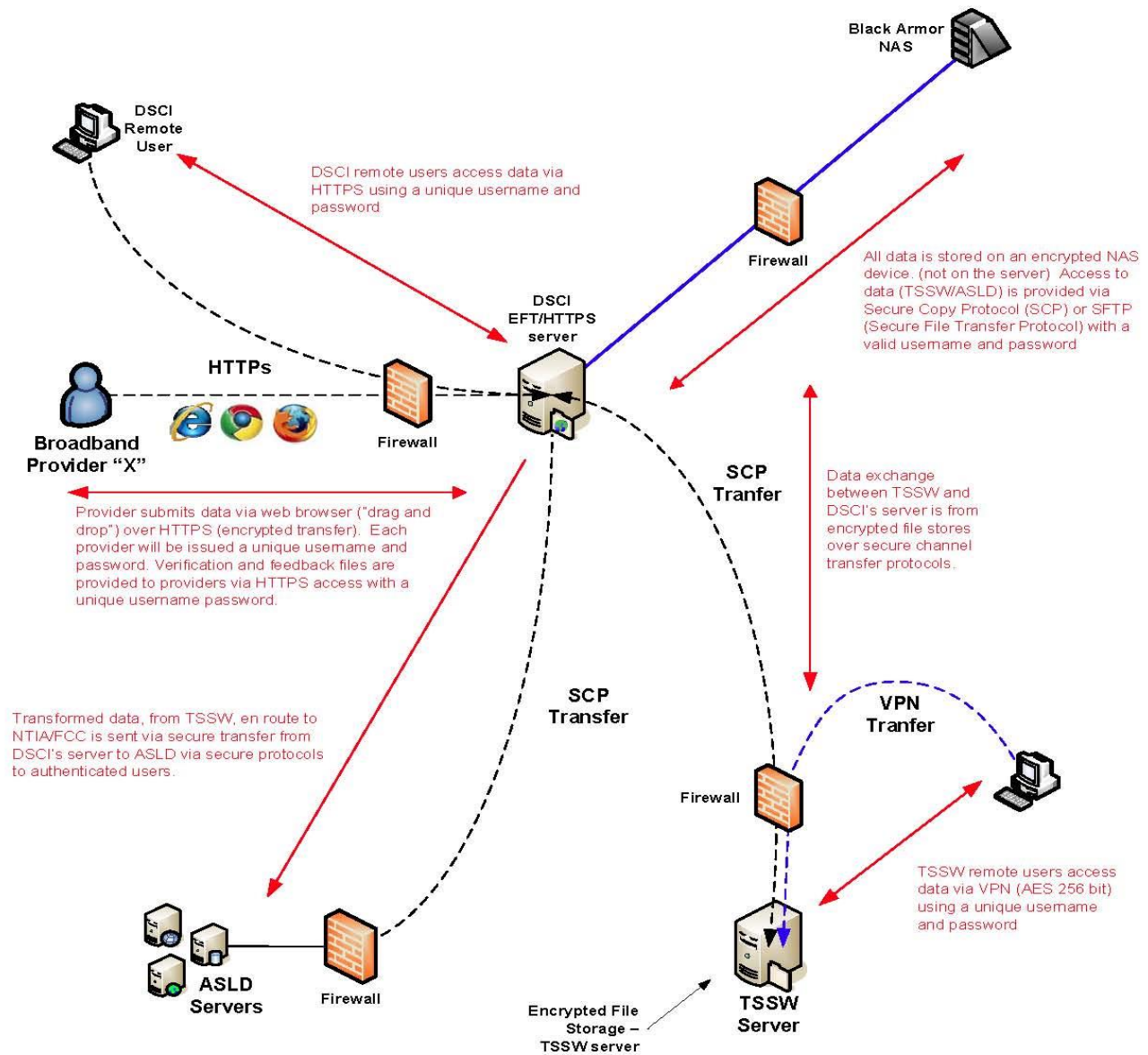
## Project Data Flow and Security

In order to provide a timely submittal ASLD maintains a workflow and dataflow process depicted in the diagram below with designated responsible parties to establish timelines for the completion of significant tasks. This process is updated and modified as needed for each submittal.



DSCI provides a secure web browser-based portal supporting the Arizona Broadband Mapping Project. To submit data the BP user logs in to the portal on the server, which can only be accessed by a unique username and password. The BP may use any web browser (Internet Explorer, Firefox, Safari or Chrome) to access the portal. After a successful login, the BP can “drag and drop” files to the browser window for upload. The BP user account is deactivated after successful transfer. The data is stored on an encrypted device in a secure facility. After data transformation and data examination and correction, along with related processing, the data is made available for review and verification by the BP user. The BP user can access and review the transformed data (as formatted for federal submittal in GIS readable format) and derived data (such as maps in PDF and KML formats) prior to its delivery to NTIA as part of DSCI’s BP feedback process and for verification tasks

# **Data Flow Broadband Mapping Project Version 2**



Notes: EFT/HTTPS server can only be accessed by a unique username and password. "Accounts" remain active during pending intake and feedback transfer. Server autobans any IP/user after three failed attempts.



# Validation

## Validation Overview

### Collaborative Verification Process and Feedback Loop

Below is an outline of our Collaborative Verification Process and the checklist of review steps and topics covered in each session. Some 16 separate collaborative verification sessions were held utilizing GoToMeeting during the review of the Spring 2013 data for this submittal cycle.

- Processing Overview
  - Discuss any notifications or pending issues for data processing and verification
- Provider by Provider
  - Overview of Evaluation of Submitted Files
    - Review the QA spreadsheet and embedded notes
    - Note anything odd/unexplained about the processing
  - Statistical Comparison of Current vs. Previous Submittal
    - Number of Features by Tech Category.
    - Area or length of Features.
    - Compare number of Middle Mile points
  - Interactive Review
    - Look at and evaluate Tech and Speeds
    - Visual overlay of previous submittal with this one
      - Use Symmetrical Difference Layer to zoom to areas when needed
    - Note any significant differences or anomalies
  - Comparison with Verification Sources.
    - Look at Middle Mile points, if available
    - Look at American Roamer, Cable Boundaries/Media Maps, TeleAtlas, etc.
    - Look at Federal Crowdsourcing points and in/near/out statistics
    - Look at IDInsight points (optionally)
  - Zoom/Pan
    - Look at edges, especially and use previous overlay
  - Take snapshots, as needed for Provider feedback and verification
  - Capture Notes for Feedback Package and wiki.
  - Schedule any Provider interactive sessions and next DSCI interactive sessions
  - Review FTP site vs. what has been copied down locally
    - Do we have what we think we have?
  - Review workflow spreadsheet and update for steps complete and still pending for each BPs' data set

## Validation Data Sources

**FCC Form 477 Data:** The FCC requires all facilities-based providers to submit a Form 477 data, which is then used to produce Local Telephone Competition and Broadband Data for analysis and reporting. The associated FCC Registration Number (FRN) is a key data identification and indexing element and the underlying data, though significantly limited in the desired broadband accuracy and granularity, has proved useful for identifying relevant Broadband Providers and as a starting point for some reverse mapping activities.

**American Roamer:** DSCI licenses American Roamer data for Arizona from Esri, which provides a substantial view of wireless voice and advanced services coverage patterns. The data set has proven of substantial use in cross checking mobile Broadband Providers' declared coverage and gaps. With the dynamic nature of the mobile industry and advancing 3G and 4G deployments, American Roamer data will be licensed on an ongoing basis to support DSCI verification activities.

**Cable Boundaries/Media Maps:** DSCI licenses Cable Boundaries data from Esri for Arizona for use as a primary verification source for cable wireline providers. It is based on information from MediaPrints developed by Direct Group and Warren Communications and updated quarterly. Cable Boundaries data provides current information about cable services by area and has data variables including primary ownership, subscribers, miles of plant, and digital capability. The data are available in a variety of geographies. Though initially useful in verification for comparing declared cable broadband coverage, it generally has proved to grossly overestimate the BPs broadband service territory and is a coarse tool of limited utility.

**TeleAtlas Central Offices & Wire Centers:** DSCI licenses TeleAtlas Central Offices & Wire Centers from Esri for ILEC and CLEC base facilities identification. Such data is available from a variety of sources and tends to remain relatively constant over time. Also, since it doesn't capture Digital Subscriber Line Access Multiplexer (DSLAM) locations, it must be complemented by other means to be useful in verifying wireline LEC coverage and gaps.

**Wireless Applications, Corp. SiteSync:** PowerSearch manages queries to multiple databases including FCC, FAA, licensed microwave, and tower companies to look for structures or towers placed in designated areas and often reveals the specific broadband providers collocating on those towers. eCoverage projects signal propagation and terrain coverage using high-resolution terrain data and Longley-Rice frequency calculations through an easy to use downlink coverage and contour generator with easily adjustable parameters like antenna, azimuth height, frequency, and power.

**Federal Crowdsourced Data:** The FCC offers an online Consumer Broadband Test (<http://www.broadband.gov/qualitytest/about/>) to give consumers additional information about the quality of their broadband connections and to create awareness about the importance of broadband quality in accessing content and services over the internet. The FCC complements the data collected from the Consumer Broadband Test with the submitted street address and other data, aggregating it to several monthly files grouped by State and available for secured



download. DSCI processes the wireline and wireless results files, converting IP addresses to named Broadband Providers, and otherwise prepares the data for use in collaborative verification procedures. These data sets have proved extremely useful in confirming declared and/or estimated BP coverage and speeds, leading to detection of core data anomalies and issues that have largely been corrected with BP participation, thus yielding much more accurate and reliable data submittals. Note that a new State speed test has launched and Mobile Pulse contracted with for specialty mobile wireless speed testing going forward per details below in the Arizona Broadband Policy Initiatives section. It is anticipated the complementary speed testing results in greater abundance will greatly enhance verification veracity and policy analysis capabilities.

**ID Insight Crowdsourced Data:** DSCI previously licensed the BroadBand Scout database from ID Insight for all 15 Arizona counties. ID Insight uses proprietary analytic modeling, demographic data, and retail Internet order data that include physical and IP addresses, to detail consumer access types and transmission speeds keyed to geographic locations which contribute to our verification views of BP footprints and coverage gaps. To date, this data source has proved complementary to the FCC crowdsourced data and only contributed incremental knowledge and detection of data set anomalies in a limited number of cases. However, detailed review of IP addresses and BPs has led to the identification of several additional relevant BPs that have since been successfully engaged by DSCI. The legacy data set is only occasionally referenced in current verification processes, especially when good density federal speed test data is unavailable.

## **Arizona Broadband Map**

### **Arizona Broadband Map Overview**

The Arizona Broadband Map features two interfaces, one for the general public and another for community planners or more advanced users. Both versions of the map allow substantial flexibility and usability in navigating to, framing, selecting data, and customizing views.

The Arizona Broadband Map (Basic) is a public map at <http://broadbandmap.az.gov/map/> that provides a detailed and multi-layered map showing the availability and advertised performance of High Capacity Digital Services (Broadband) in the State of Arizona by individual street address or at any point selected. Links are provided to many providers websites when the provider is identified as one of those serving an address or location.

The Community Broadband Planning Map at <http://broadbandmap.az.gov/CommunityPlanningMap/> includes a large collection of map layers with a rich set of Spatial Analysis Tools to help community planners make better broadband decisions for their community. The powerful application has Population and Housing data down to the Census Block level. Community broadband consultants have also prepared profile spreadsheets for each Arizona community which are linked from the map and downloadable.

Both the Basic and Community Broadband Planning mapping applications use ArcGIS Server Technology from Esri, and are accessible by anyone with an Internet connection.

## **Arizona Broadband Map Details**

The Community Broadband Planning Map was designed to help Community Planners make better broadband decisions for their community and other advanced users optimize and exploit the available data. The central idea behind this added map version was to present a set of tools that would help a planner identify their study area, find all combinations of Broadband Providers, Service Types and Advertised Download/Upload speeds, and quickly chart out the Population and Housing data showing the number of people, average median age, households, average household size, total area, etc.

What makes Arizona's Community Planning Map unique is the power and flexibility it gives users to perform spatial analysis. For example, users can perform a spatial search to find all the Libraries within a specific Zipcode. Subsequently, a 2-mile buffer can be drawn around a Library to find all the public schools that fall within this 2-mile radius. The Advertised Upload and Download Broadband Speeds and Service Types to these schools can be instantly charted. Further, all the Census Blocks falling within this 2-mile buffer can be selected and their attributes can be exported to a spreadsheet. Users can easily determine the number of people living within 2 miles of a Library; find their average median age, the total number of households, etc.

All of Arizona's Broadband Providers and their associated metrics can be easily viewed and the results saved as a Comma or Tab Delimited File for further analysis. A Community Planner can readily measure the area and perimeter of their community; find the distance from the nearest Central Office, or major road or highway; and quickly view the Broadband footprints of every provider in the vicinity. Spatial Searches can be made based on a Census Block, Census Block Group, Census Tract, Zipcode, City or Town, or any arbitrary polygon drawn on the map.

Once a search area is defined, users can easily locate Community Anchor Institutions (CAIs) including Schools, Libraries, Hospitals, Fire Stations, Police Departments, etc., falling within this area and draw buffers around selected features, to continue the spatial search process and preparation of map views with great utility.

## **Arizona Broadband Map Tutorials**

Twenty-three tutorials on how to use various features of the map are available on a dedicated YouTube channel at <http://www.youtube.com/user/ArizonaBroadband>. In addition to providing instructions on how to use the map they demonstrate functions such as:

- Finding an Address,
- Identifying Broadband Providers,
- Displaying the Map Layers,
- Identifying Community Buildings,
- Buffering Points,

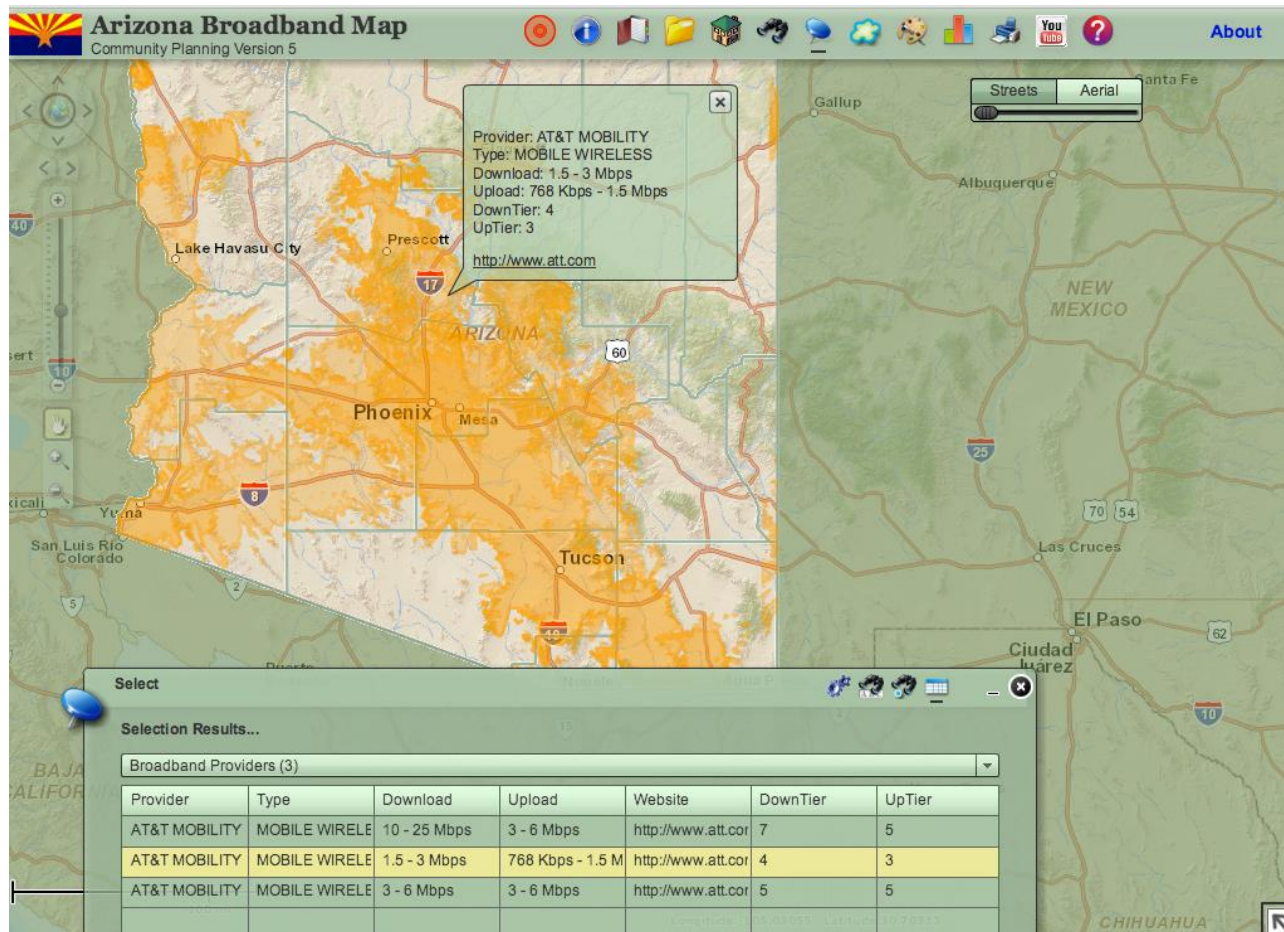
- Graphical Search,
- Text Search,
- Spatial Search and
- Using the Select Widget.

Some of the latest features added include the capability to build an SQL statement to display the Broadband Footprints of a specific Provider. For example, one can:

- Display the Broadband Footprints of a selected BP such as AT&T Mobility, showing all their speed tiers;
- Further modify the SQL Statement to display only Download Speed Tier = 7, which helps to display just the 4G coverage areas of AT&T Mobility;
- Save your SQL Statements to Notepad for later use;
- Build similar SQL Statements to display the 4G coverage areas of some other carrier, such as Verizon; and
- Display the combined 4G coverage areas of AT&T and Verizon.

We believe we are unique among the 50 States to have this mapping capability to isolate and display Broadband Coverage areas by a given BP and a given Speed Tier.

The screen shot below shows one of the earlier stages of the above example process.



## Arizona Broadband Policy Initiatives

We have been engaged as partners in various Arizona broadband grant related initiatives, some of which are described below:

The State of Arizona, through the Arizona Strategic Enterprise Technology Office (ASET - <http://aset.azdoa.gov/>), continues to define and develop an array of broadband policy and planning initiatives including a Digital Arizona Council (DAC) comprised of government, institutional, and private sector participants. The ASET team has involved many in the broadband provider community in discussing Arizona broadband deployment issues and working towards creative and effective solutions. There are six established DAC Task Forces. The DAC Strategic Planning Task Force developed a draft Arizona Broadband Strategic Plan that can be found in three versions of varying length at [http://www.digitalarizona.gov/Digital\\_Arizona\\_Council/Strategy.html](http://www.digitalarizona.gov/Digital_Arizona_Council/Strategy.html).

ASET has continued to evolve the Arizona Broadband Project Portal also hosting the Digital Arizona Project content and resources at <http://www.digitalarizona.gov/> as a home base for DAC and this project as well as other broadband initiatives.

In March 2013, ASET launched an Arizona broadband speed test and associated campaign designed to gather critical broadband metrics and serve the public. Arizona licensed the core speed test capabilities from Ookla and created a portal for end users to test their connections, answer some mandatory questions, and optionally answer additional survey questions. The speed test and associated survey is being used by the Arizona State Lottery system to obtain actual performance numbers from users who access the Lottery website. One of our partners, the non-profit Arizona Telecommunications and Information Council (ATIC) at <http://arizonatele.com/>, has donated several iPads as prizes randomly awarded among those who take the speed test and the survey. The Arizona Department of Education (ADE) is also soliciting participation from all Arizona teachers and staff personnel as are the community broadband consultants and other partners.

In order to enhance the breadth of sources available for gathering speed test data, ASET has contracted with Mobile Pulse, Inc. (<http://www.mobilepulse.com/>), who provides tools for mobile broadband measurement and analytics. The Mobile Pulse app is installed on mobile devices to periodically collect network performance data in the background and securely sends it to Mobile Pulse. Gathered data is analyzed and clearly presented on a web-based dashboard featuring detailed maps, comparisons and reports, as well as being made available for download for post processing and analysis.

The Arizona State Land Department (ASLD) is maintaining the related Arizona Broadband Map at <http://broadbandmap.az.gov/map/> loaded with the last broadband data set. Additionally, there is a special Community Planning version of the broadband map available at <http://broadbandmap.az.gov/CommunityPlanningMap/> and loaded with demographic data and special analysis tools that will aid community broadband analysis and planning. These tools are designed to mutually serve both Arizona's broadband consumer and provider communities, as

AZ BAP Tech Appendix for Spring 2013



well as contribute to State policy and strategic planning. It should help lead consumers to provider web sites and information about their broadband offerings, hopefully becoming an important tool in the BPs' marketing efforts.

Arizona's rural communities are now receiving Community Broadband Planning and Technical Assistance help. ASET and its non-profit partner, the Arizona Telecommunications & Information Institute (ATI Institute - <http://aztii.org/>), have qualified and approved a cadre of consultants who have been selected by regional government coalitions to provide strategic planning, technical assistance, and grant writing, e-commerce training and assistance across Arizona's rural areas.

An Essential Infrastructure for Information Delivery study was performed by DSCI in the fall of 2011 and produced an Arizona roadmap for reducing barriers based in arizona law, policy, and rules hindering establishing public rights-of-way as essential infrastructure for information delivery. Herein, we identify the many Right-of-Way (ROW) issues encountered by government, industry, and broadband customers, both commercial and residential and offer up insight on current trends, national policy evolution, and the State of Arizona's opportunities to undertake positive actions where appropriate and practical.

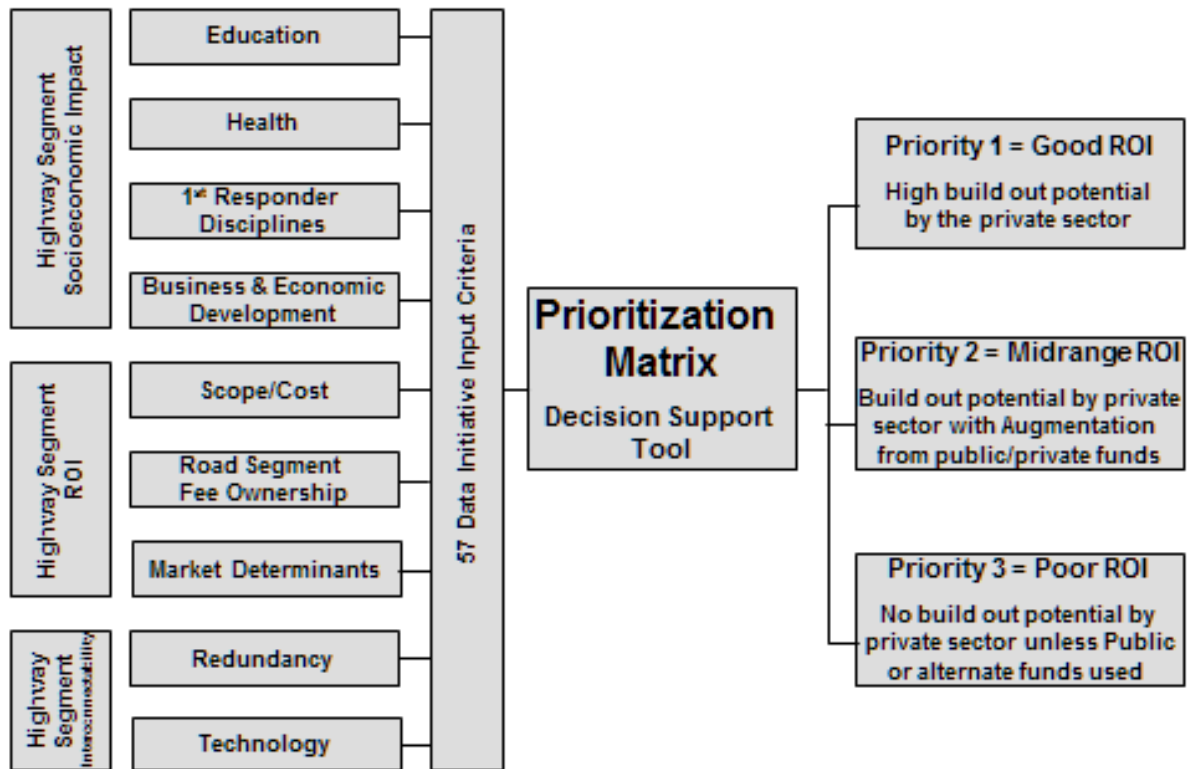
The Essential Infrastructure for Information Delivery study seeded the opportunity for ATIC to develop and drive new legislation, Arizona SB1402, the Digital Arizona Highways Bill, which was passed and signed in the 2012 legislative session. Specifically, the bill expands existing rules governing ADOT's management of State ROW to include transportation-of-information as well as vehicles and to make available conduits in the ROW to private broadband providers on a cost-recovery basis. The result will be more utilization and streamlined access to the ROW for constructing broadband conduits, thereby accelerating and improving availability of broadband services to unserved areas of Arizona. ASET and ADOT are working together to launch one or more demonstration projects deploying fiber conduit along state highways in cooperation with providers to provide critical middle mile digital capacity for mobile wireless backhaul, community fixed wireless delivery, and support of other connectivity needs.

Because of the passing of SB1402 ASET's SBDD program is working closely with our Public Safety Interoperable Communications (PISC) Office which has responsibility for FirstNet planning and outreach. This office also reports to the state CIO and is exploring synergistic ways of using SB1402 to potentially lower the costs of expanding rural backhaul infrastructure for use by FirstNet and also sharing those expanded resources to benefit educational, healthcare, and economic development uses in rural communities.

ASET has developed a Highway Conduit Deployment Prioritization Matrix to support the evaluation and prioritization of the Digital Arizona Program (DAP) Proof-of-Concept demonstrations and support statewide conduit buildout staging and sequencing processes. The Prioritization Matrix tool assists the decision making process by analyzing some 90+ individual road segments rather than individual communities as the basis for evaluation. It supplies empirical (data driven) analysis rather than subjective evaluation methods incorporating some

59 prioritization matrix data variables. The Prioritization Matrix supports a Management by Objective (MBO) framework oriented around three high level objectives:

- Highway segment socioeconomic impact (Educ., Health, Public Safety, Econ. Dev. [cell towers, application readiness])
- Highway segment ROI (Scope/Cost [terrain], Ownership, Market Determinants [population, demand, current infrastructure])
- Highway segment interconnectability (Technology [carrier hotels along segment], SONET Ring viability and redundancy [does it further an interconnect])

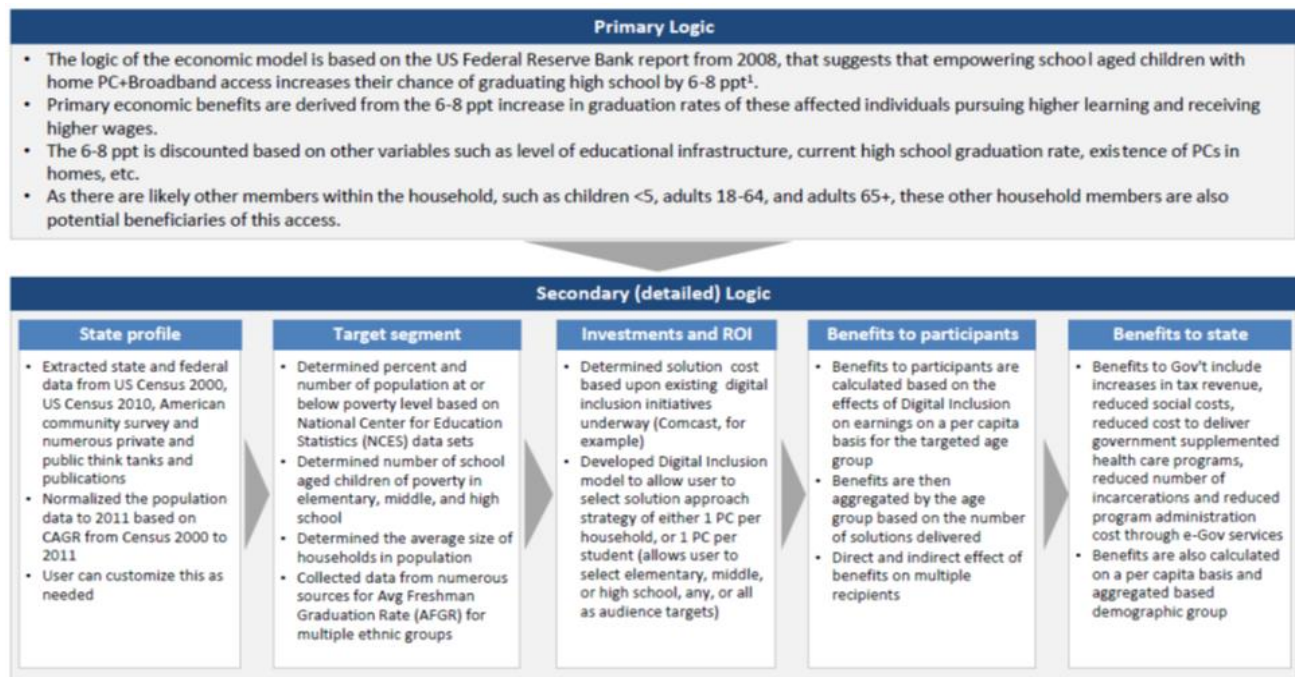


ASET and DSCI have several interns working at ADOT to review land ownership and use along State highways as divided into a number of road segments and capture relevant data and associated documents.

Another significant piece of legislation related to broadband in rural areas, SB1353, the telemedicine parity bill, was promoted by our partner ATIC and was signed into law by the Governor in 2013. It requires private health insurers to provide coverage in rural communities for services delivered via telemedicine at a comparable rate to those provided in person. Services covered include trauma, burns, cardiology, infectious diseases, mental health disorders, neurological diseases and dermatology. Significant collaboration between healthcare stakeholders and telemedicine interests built a coalition and solid support for the bill.

ATI Institute partnered with Microsoft Corporation (<http://www.microsoft.com/>) and their Shape the Future team to have a Digital Inclusion Economic Impact Model for Arizona executed by their partner The Arnold Group (<http://www.the-arnold-group.com/>) at no cost to ATI Institute or the State. The model is designed to measure the economic impact of digital inclusion initiatives

and has been performed across the U.S. in five states and seven cities to date including Arizona. Now that the statewide study is complete, the tool as provided to ATI Institute can be freely used with local communities by government, consultants, and the communities themselves, so they too can begin to understand the benefits of digital inclusion at a local level.



<sup>1</sup>Note: <https://federalreserve.gov/pubs/fdp/2008/958/fdp958.htm>

ASET and ASLD are committed to using the NTIA grant to realize significant insights to the Arizona broadband environment and provide real benefits to broadband providers in identifying unserved and underserved markets, easing regulation and right of way issues, and otherwise contributing to robust broadband availability and favorable broadband provider environment.

# Appendix A - Arizona Broadband Provider Changes and Corrections Document

## Arizona Spring 2013 (Submission 7)

| Arizona Broadband Providers (BPs)    | Changes | Corrections | Spring 2013 (Submission 7)<br>Changes and Corrections Notes  |
|--------------------------------------|---------|-------------|--|
| Airband                              |         |             | No changes for this provider this cycle.   |
| Airebeam                             |         |             | No changes for this provider this cycle.   |
| AT&T Mobility LLC                    | X       |             | Shows almost 10,000 square miles of increased coverage for 3G spectrum. 4G looks logical, shows some growth.   |
| AZNet                                |         |             | No changes for this provider this cycle.   |
| Baja Broadband                       |         |             | No changes for this provider this cycle.   |
| BeamSpeed                            |         |             | No changes for this provider this cycle; provider has been non-responsive.   |
| Bolt Internet                        |         |             | No changes for this provider this cycle.   |
| Cable One                            | X       |             | Cable one appears to have made a greater effort to be accurate; we show less road segments, but a greater coverage area through census blocks. They also carry no Tech 41. |
| Casa Grande Internet                 |         |             | No changes for this provider this cycle.   |
| (Cellular One)                       |         |             | This provider does not supply up or downstream speeds fast enough to be broadband.   |
| CenturyLink                          | X       |             | First FTTH availability and overall growth in this submittal. Show less road segments, but more coverage area; again we believe this to be an effort at accuracy.          |
| CIS Wireless Broadband               |         |             | No changes for this provider this cycle.   |
| City of Phoenix (Sky Harbor Airport) |         |             | No changes for this provider this cycle.   |
| Comcast Cable                        | X       |             | Comcast increased number of census blocks, but their area of coverage went down. Road segments are up. We note many drops along the ten in Tucson.                         |
| Commspeed                            |         |             | No changes for this provider this cycle. (now owns Swift Wireless)   |
| Copper Valley                        |         |             | No changes for this provider this cycle.   |
| CopperNet                            |         |             | No changes for this provider this cycle.   |
| Covad Communications                 | X       |             | Note reductions in Tech 10 and 20; roughly 50 to 70 square miles for each, and lost minimal ground on tech 30.   |



| <b>Arizona Broadband Providers (BPs)</b>       | <b>Changes</b> | <b>Corrections</b> | <b>Spring 2013 (Submission 7)<br/>Changes and Corrections Notes</b>   |
|--|----------------|--------------------|---|
| Cox Communications                             | X              | X                  | Cox sent us a shapefile for the first time, which encompassed address and census block service areas. We combined the shapefile, census blocks, and Road segments; shows contraction, and loss of Gila Bend, Willcox, Pearce and Patagonia.                             |
| DataMax Wireless/Wecom                         |                |                    | No changes for this provider this cycle.  |
| Desert iNet                                    |                |                    | No changes for this provider this cycle.  |
| Fort Mojave Telecom                            |                |                    | No changes for this provider this cycle.  |
| Frontier Citizens Utilities Rural              | X              |                    | About 25% increase in area that seem to be strategic expansion.   |
| Frontier Communications of the Southwest       | X              |                    | Approximately 10-fold increase in area due to acquisition of Verizon of California area.  |
| Frontier Communications of the White Mountains | X              |                    | Minimal changes in area.  |
| Frontier Navajo Communications                 | X              |                    | Minimal changes in area. The DSLAMS in this submittal only showed a 15K radius and not the concentric circles of other DSLAMS in the frontier network. Additional coverage in Chinle.   |
| (Gila River Telecom)                           |                |                    | Continue to opt out for this cycle.   |
| Golden Valley                                  |                |                    | No changes for this provider this cycle.  |
| Grand Avenue Broadband                         |                |                    | No changes for this provider this cycle; adamant about not participating in the project.  |
| Greenfield Communications                      |                |                    | No changes for this provider this cycle.  |
| HNS (Hughes, EchoStar)                         | X              |                    | The actual coverage HNS sent us this time as a text file of census blocks. This census block layer was dissolved into service area polygon and is dramatically different from previous submittals. Does not cover the whole state, but does offer two different speeds. |
| Hopi Telecom (HTI)                             |                |                    | No changes for this provider this cycle.  |
| HPAZ.net                                       | X              |                    | New Provider; reverse mapped through website information.   |
| InfoWest                                       |                |                    | No changes for this provider this cycle.  |
| Integra Telecom (Echelon)                      |                |                    | No changes for this provider this cycle.  |
| Last Mile Research                             | X              |                    | Changed from a single point of presence to WISP services over Tusayan and changed from Tech 30 to Tech 70.  |
| Leap Wireless (Cricket)                        | X              |                    | Increases in area of over a thousand sq. miles, despite the loss of a spectrum assumed added to other spectrum.   |

| <b>Arizona Broadband Providers (BPs)</b>   | <b>Changes</b> | <b>Corrections</b> | <b>Spring 2013 (Submission 7)<br/>Changes and Corrections Notes</b>   |
|--|----------------|--------------------|---|
| Level 3 Communications                     | X              |                    | Increased in area from 7.4 to 26.3 sq. miles, and 64 to 278 Census Blocks. However the middle mile point change from 188 to 68, we assume this is a complete submittal.   |
| Mediacom Southeast                         |                |                    | No changes for this provider this cycle.  |
| Orbitel Communications                     |                |                    | No changes for this provider this cycle; provider has come under new ownership, Shurz Communications.   |
| Phoenix Internet                           |                |                    | No changes for this provider this cycle.  |
| Pointe Wireless                            |                |                    | No changes for this provider this cycle.  |
| Rio Verde Wireless                         |                |                    | No changes for this provider this cycle.  |
| Rio Virgin Telephone (Reliance Connects)   |                |                    | No changes for this provider this cycle.  |
| RuralNet Wireless                          |                |                    | No changes for this provider this cycle.  |
| Saddleback Communications                  |                |                    | No changes for this provider this cycle.  |
| Salt River Project (SRP)                   | X              |                    | Greatly reduced coverage from them due to clarifications in representing fiber coverage from the NTIA. SRP omitted service in eastern mining district for this submittal. |
| San Carlos Apache Telecom Utility (SCATUI) |                |                    | No changes for this provider this cycle; no lit fiber for outside consumption.  |
| Simply Bits                                |                |                    | No changes for this provider this cycle.  |
| SkyCasters                                 |                |                    | No changes for this provider this cycle.  |
| Smith Bagley, Inc.                         |                |                    | No changes for this provider this cycle.  |
| South Central Utah Telephone Association   |                |                    | No changes for this provider this cycle; provider has been non-responsive.  |
| Sprint Communications                      | X              |                    | Increased coverage area of 28 sq. Miles.  |
| StarBand Communications                    |                |                    | No changes for this provider this cycle.  |
| SuddenLink                                 | X              |                    | Show some logical additions and subtractions. Found nothing major, but did take Screenshots for reference to provider for confirmation.                                   |
| Table Top Telephone                        |                |                    | No changes for this provider this cycle.  |
| TDS Telecom                                | X              |                    | Only has 3 middle mile points.  |
| Time Warner Cable                          | X              |                    | Minor increase of ten census blocks.  |
| T-Mobile (Deutsche Telekom)                | X              |                    | Shows growth in 4G in Tucson and Flagstaff; however the typical listed speeds for 3G are too slow to classify as broadband.   |
| Tohono O'odham Utility (TOUA)              |                |                    | No changes for this provider this cycle.  |
| Transcend Broadband                        |                |                    | No changes for this provider this cycle.  |
| Transworld Network                         | X              |                    | Re-modeled the service area and combined with Fall 2012 coverage.   |
| Trucom (BlueWire)                          |                |                    | No changes for this provider this cycle.  |

| <b>Arizona Broadband Providers (BPs)</b> | <b>Changes</b> | <b>Corrections</b> | <b>Spring 2013 (Submission 7)<br/>Changes and Corrections Notes</b>   |
|--|----------------|--------------------|---|
| TW Telecom                               | X              |                    | Minor decrease for Tech 30 and minor increase for Tech50.   |
| Valley Connections                       |                |                    | No changes for this provider this cycle.  |
| Valley Telephone Coop                    |                |                    | No changes for this provider this cycle.  |
| Verizon Wireless                         | X              |                    | We see little or no change in 3G coverage, but new 4G coverage in Tucson, Flagstaff, Prescott, Casa Grande, and Blythe. |
| ViaSat                                   | X              |                    | Minor increase in download speed. Looks logical.  |
| WebHiway Communications                  |                |                    | No changes for this provider this cycle.  |
| Western Broadband                        |                |                    | No changes for this provider this cycle; provider has been non-responsive. Purchased by Shurz                           |
| (Western WiMax)                          |                |                    | Continue to opt out.  |
| Wydebeam                                 |                |                    | No changes for this provider this cycle.  |
| XO Communications                        |                |                    | No changes for this provider this cycle.  |
| Xpressweb Internet                       |                |                    | No changes for this provider this cycle.  |
| Ygnition                                 |                |                    | No changes for this provider this cycle.  |
| Zayo Enterprise Networks                 | X              |                    | Received updated information.   |
| Zona                                     |                |                    | No changes for this provider this cycle; provider has been non-responsive.  |
| <b>Total Included</b>                    | <b>17</b>      | <b>1</b>           |   |

Note: Parenthesis indicates a provider not included in this submittal.

## **Appendix B - Arizona Broadband Coverage Maps for Spring 2013**

**All Technologies (except Satellite)**  
**DSL, xDSL & Other Copper (Tech 10-30)**  
**Cable Modem (Tech 40-41)**  
**Optical Carrier/Fiber to End User (Tech 50)**  
**Satellite (Tech 60)**  
**Fixed Wireless (Tech 70-71)**  
**Mobile Wireless (Tech 80)**  
**Middle Mile Providers**  
**Broadband Provider Count**

### **Arizona Digital Landscape and Situational Analysis**

From the Arizona Broadband Analysis Project data for Spring 2013 we know that while a healthy 99.5% of Arizona households can get broadband of at least 768 Kbps download from at least one provider, not including available satellite service. As we move to rural areas that decreases to 97.6% of households. And for sparsely populated rural areas, the percentage decreases further to 95.7% of households, leaving more than 4% of sparsely populated rural households without any broadband coverage at all except satellite.

When we consider the more reasonable modern connection speed of at least 3 Mbps download, the availability percentages start to visibly decline to 97.5% of households statewide, 88.3% for rural areas, and 80.9% for sparsely populated rural areas leaving some 19% of households in sparsely populated rural areas without what we would consider adequate bandwidth. At a somewhat higher connection speed of 6 Mbps download, the availability percentages more precipitously decline to 95.2% of households statewide, 77.8% for rural areas, and only 65.9% for sparsely populated rural areas leaving some 34% of households in sparsely populated rural areas without such higher performance services.

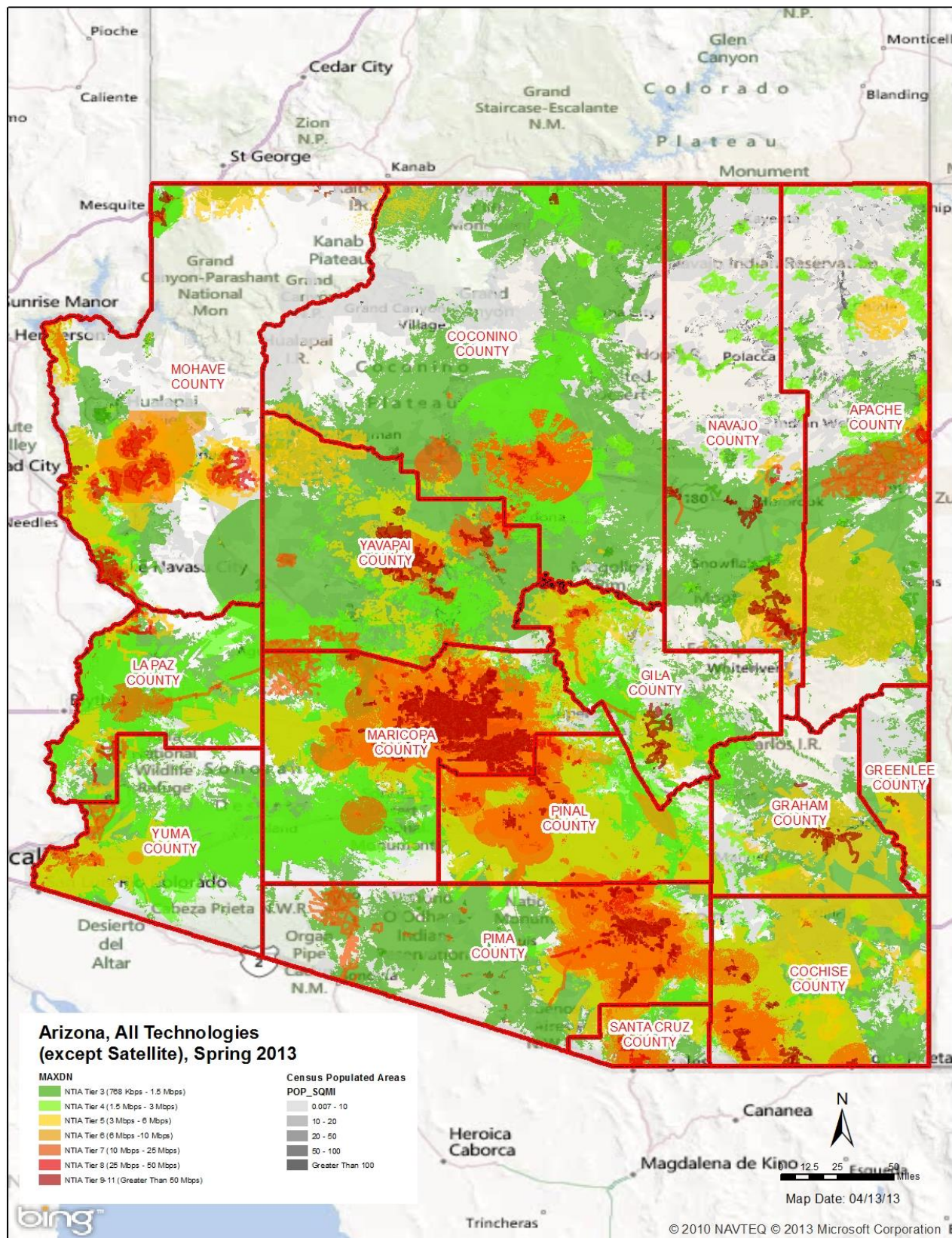
Looking at specific technologies, DSL, xDSL & other copper delivered services at connection speeds of at least 3 Mbps download are available to 86.4% of households statewide, 55.2% for rural areas, and 42.9% for sparsely populated rural areas. At a somewhat higher connection speed of 6 Mbps download, the availability percentages more precipitously decline to 78.4% of households statewide, 41.0% for rural areas, and only 30.8% for sparsely populated rural areas.

Cable modem services at connection speeds of at least 3 Mbps download are available to 88.9% of households statewide, 55.9% for rural areas, and 34.3% for sparsely populated rural areas. The cable industry has invested heavily in a new generation of DOCSIS 3.0 services to be able to deliver connection speeds of 10 Mbps download or greater to 88.6% of households statewide, but that percentage declines to 55.5% of rural households and only 33.8% of sparsely populated rural households.

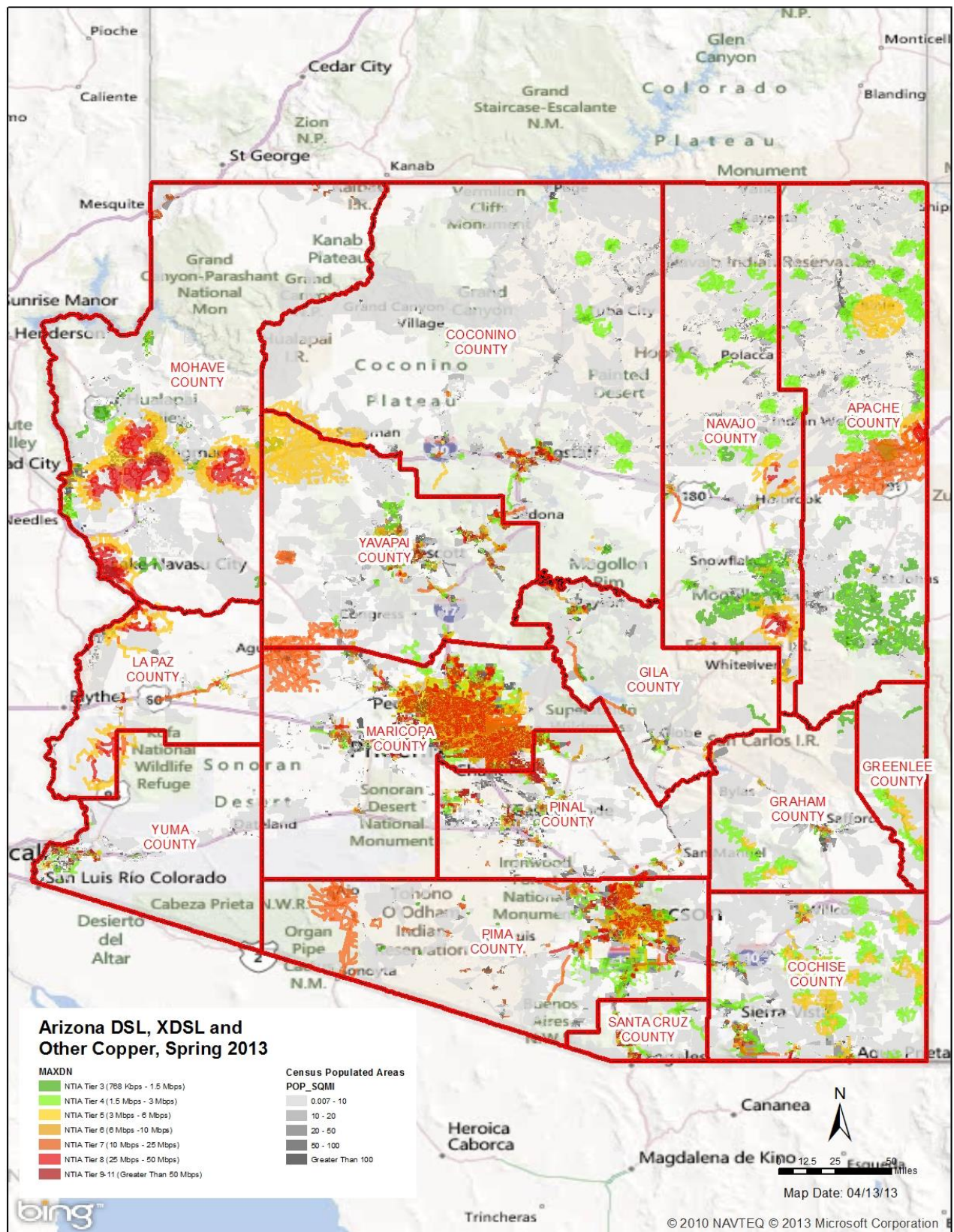
Fixed wireless services at connection speeds of at least 768 Kbps download, including Wi-Fi networks and other fixed wireless technologies, are available to 94.7% of individuals statewide, 76.1% for rural areas, and 68.3% for sparsely populated rural areas. At connection speeds of at least 3.0 Mbps, fixed wireless services are available to only 62.0% of individuals statewide, but only to 63.1% of those living in rural areas and 53.2% of those in sparsely populated rural areas.

Mobile wireless services at connection speeds of at least 768 Kbps download, generally 3G services edging into 4G, are available to 98.7% of individuals statewide, 93.7% for rural areas, and 90.2% for sparsely populated rural areas. At connection speeds of at least 3.0 Mbps, well into 4G service range, mobile wireless services have rapidly expanded and are now available to 92.8% of individuals statewide, but only to 68.0% of those living in rural areas and 61.0% of those in sparsely populated rural areas.

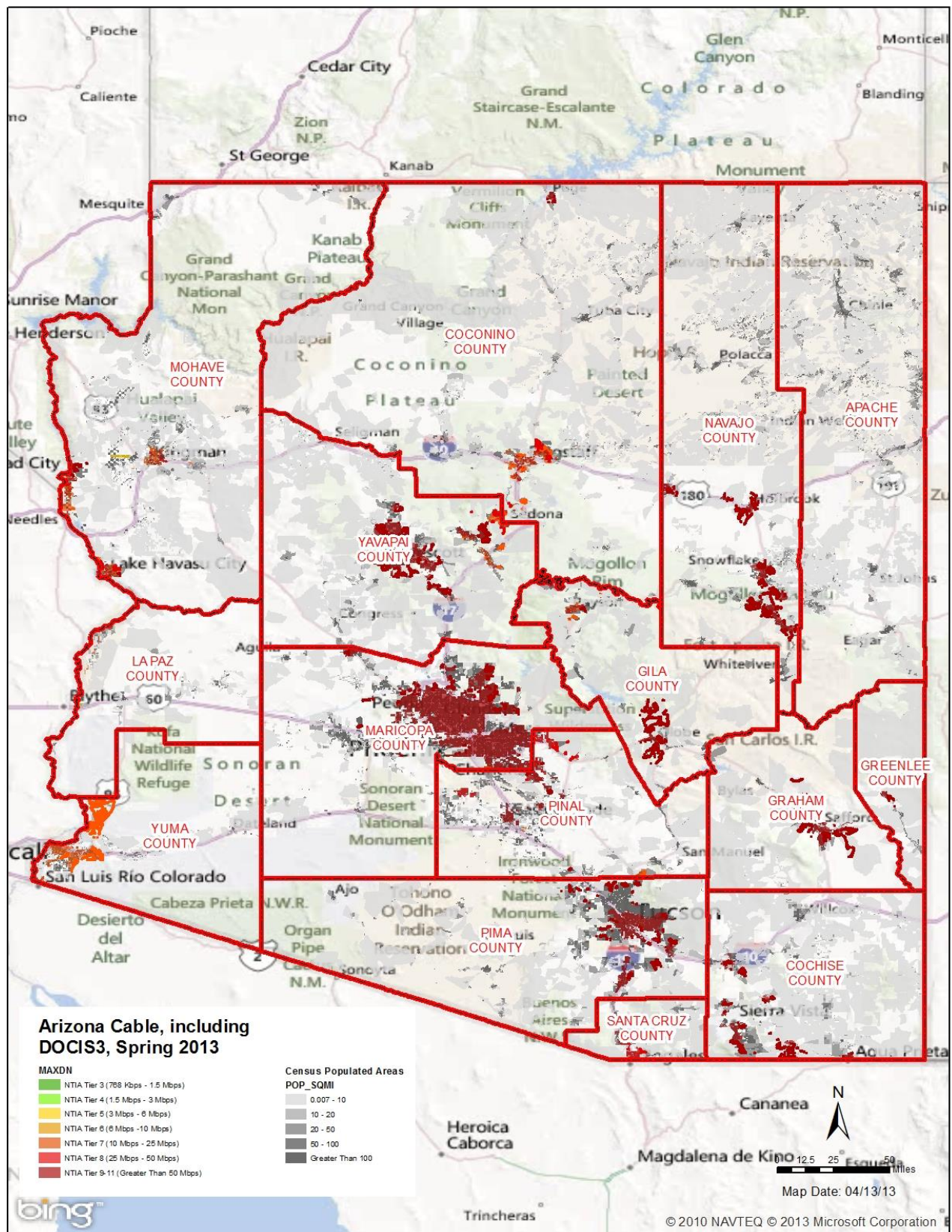
Satellite broadband services at connection speeds of at least 1.5 Mbps download are available to all individuals statewide with a view of the southern sky and ability to mount a small satellite dish. Connection speeds of up to 10 Mbps and beyond are available selectively within defined geographic footprints.



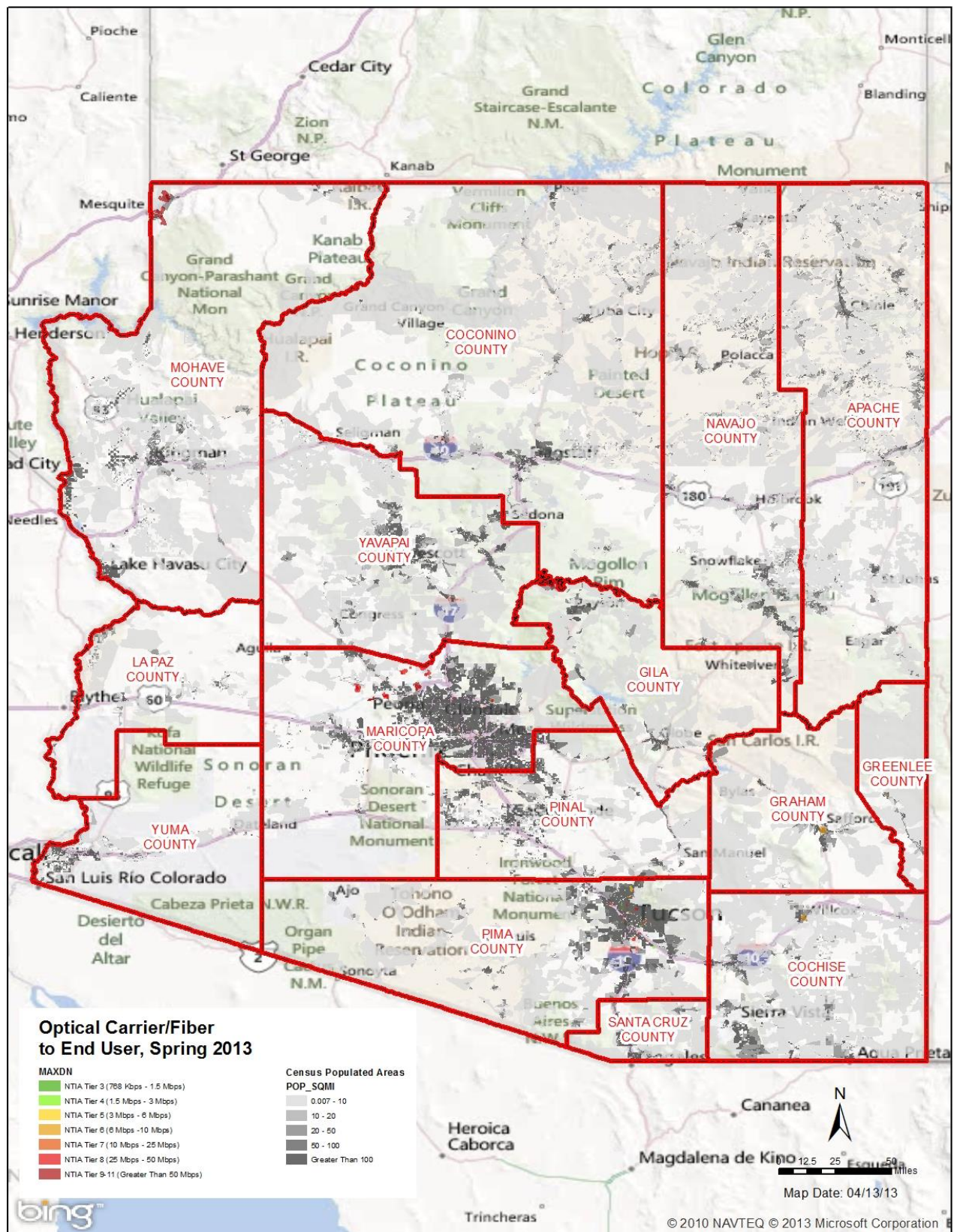




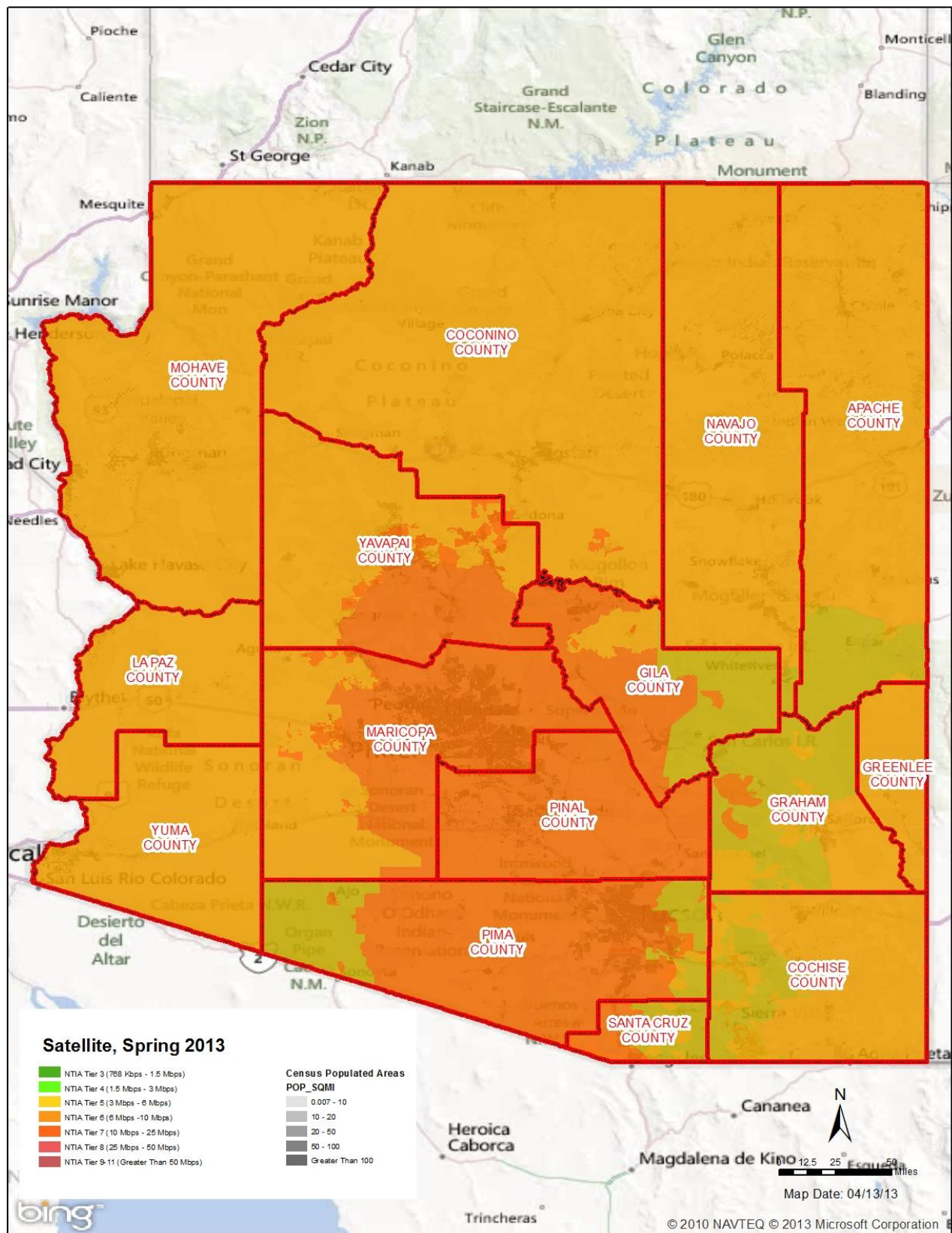


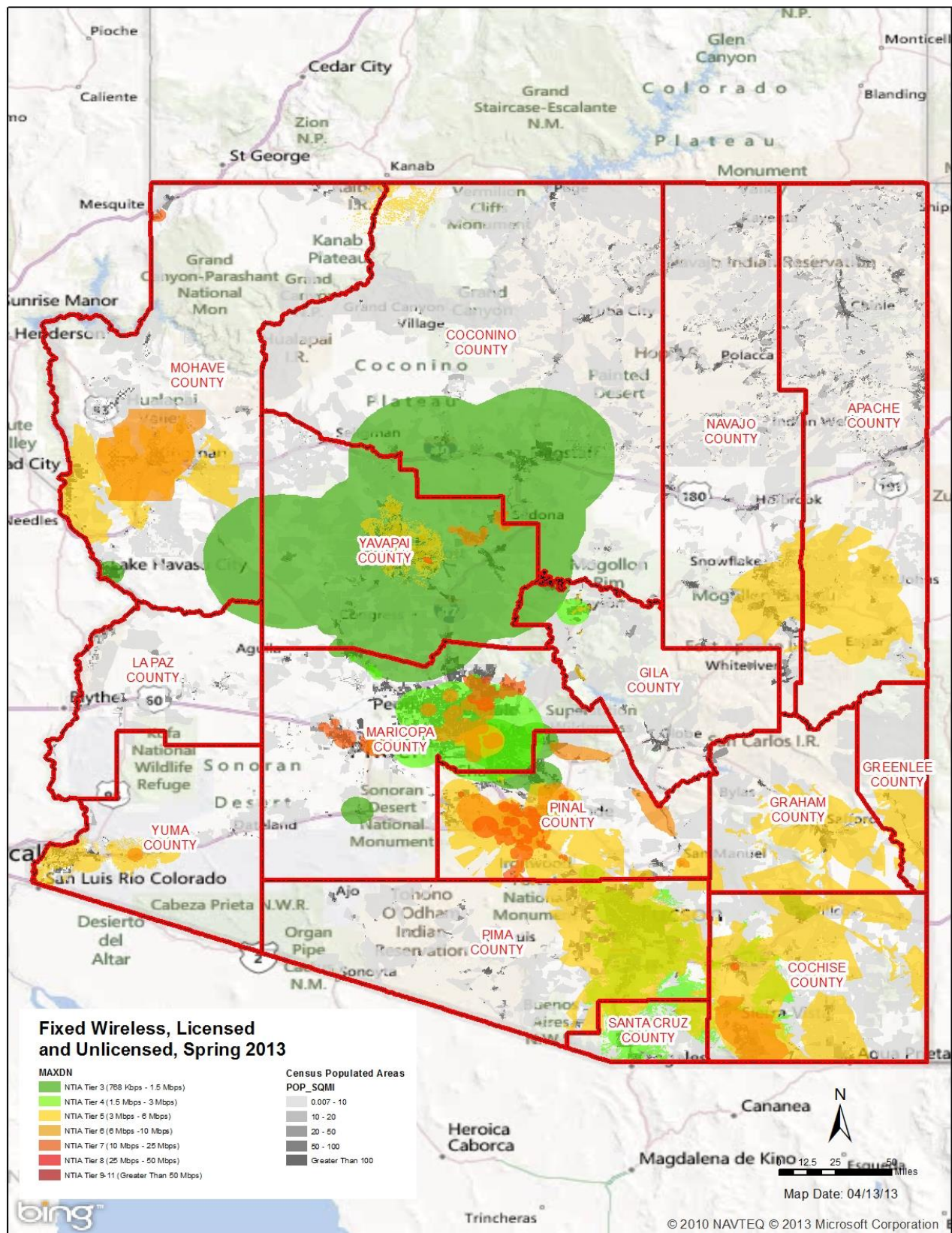




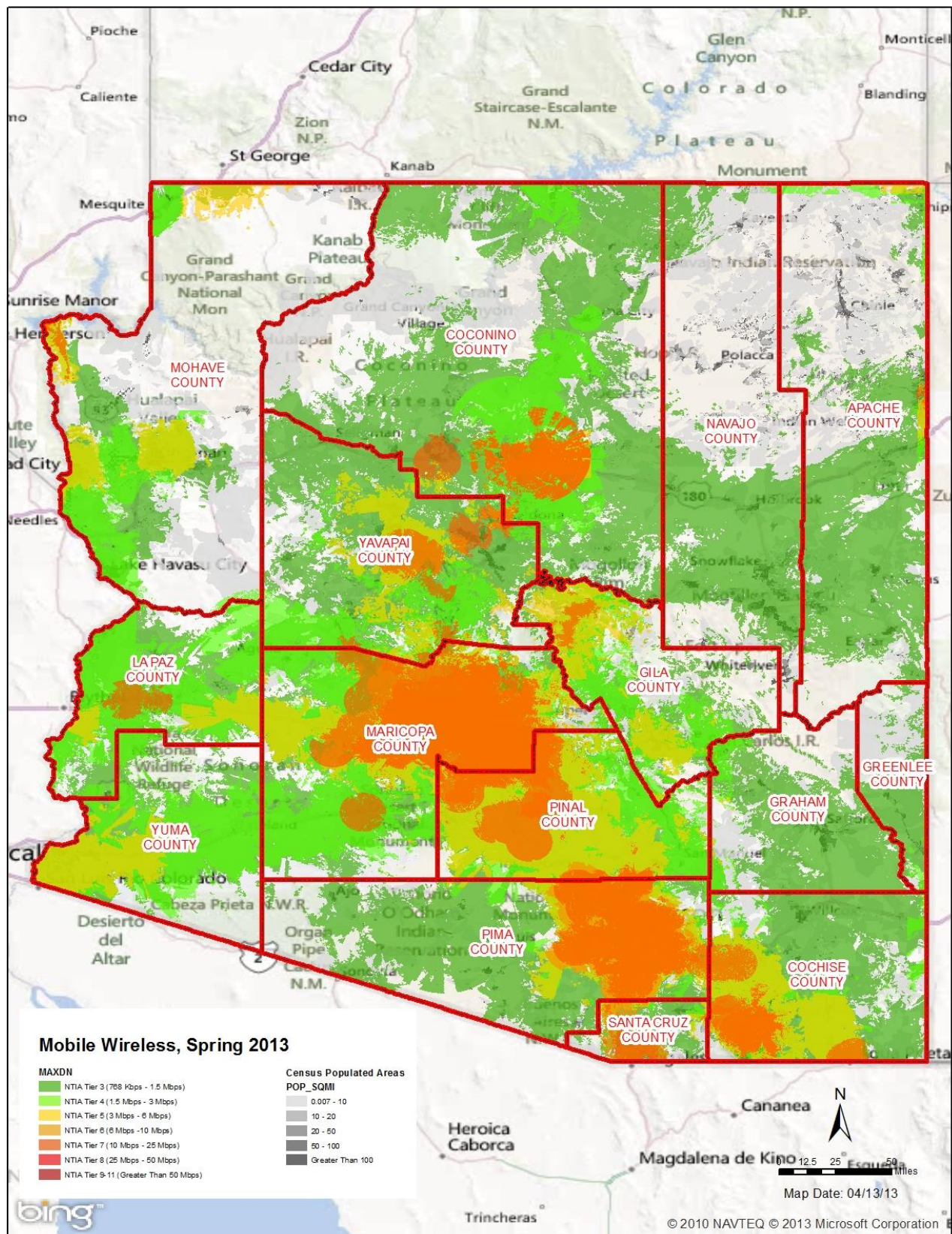




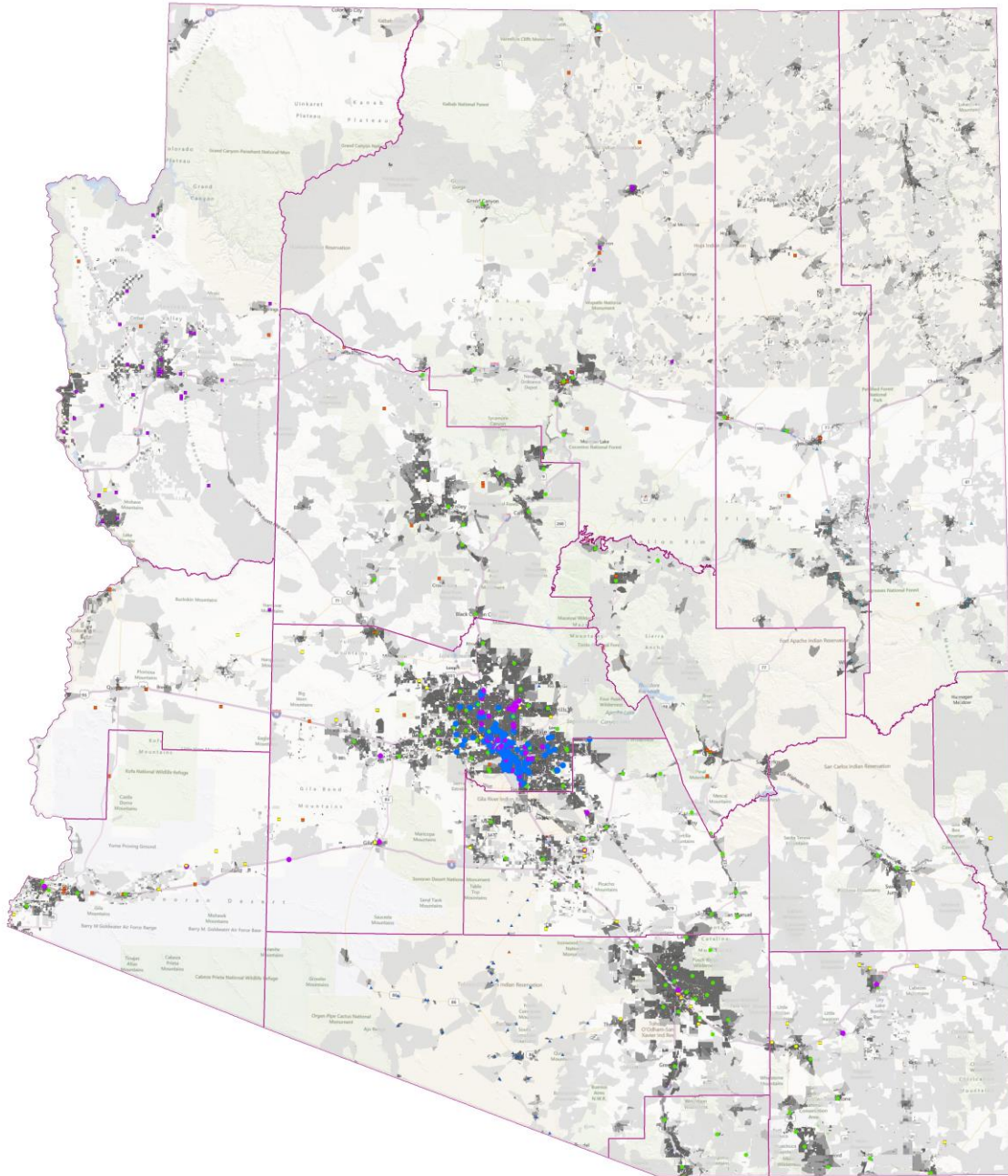












## Arizona Broadband Mapping Program

### Middle Mile Providers SPRING 2013 SUBMITTAL

**Census Population/Sq. Mile**

- Less Than 10
- 10 - 20
- 20 - 50
- 50 - 100
- Greater Than 100

**Spring 2013: Middle Mile Points**  
**DBA NAME, Number of Points**

- AT&T Mobility LLC, 1
- Saddleback Communications, 2
- TW Telecom of Arizona LLC, 2
- Covad Communications Company, 3

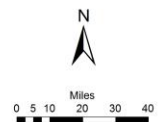
- Mediacom Southeast, 3
- Sprint, 3
- TDS Telecom, 3
- Trucom, 4
- Fort Mojave Telecommunications Inc., 5
- T-Mobile, 6

- CoxCom Inc, 10
- AZNet, 15
- Cellular One of NE Arizona, 17
- Integra Telecom, 24
- Tohono O Odham Utility Authority, 37
- WiCom, 44

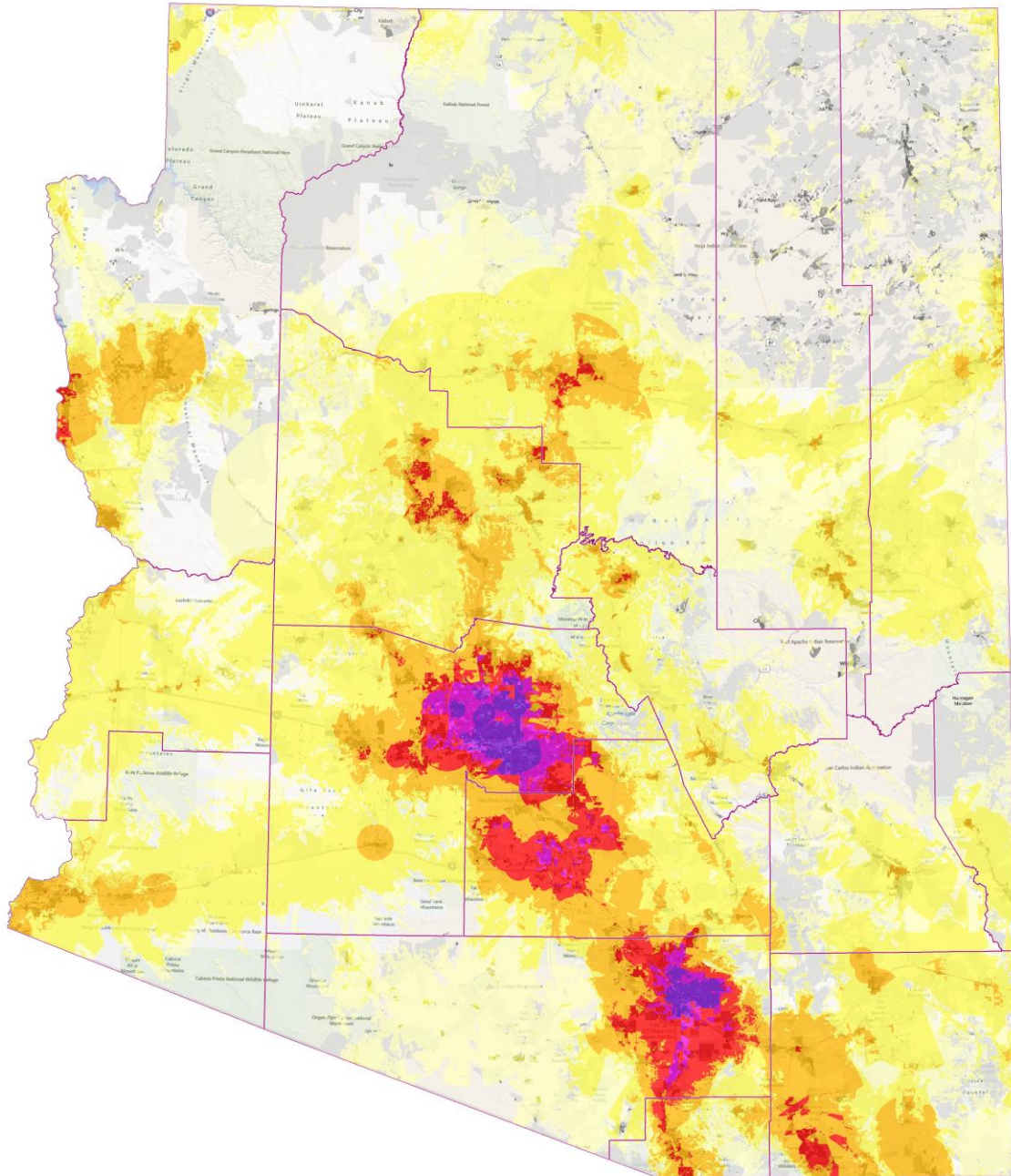
- Airband Communications Inc, 52
- Level3 Communications LLC, 64
- CenturyLink, 136
- Zayo Enterprise Networks LLC, 147
- Salt River Project, 264

Map Date: 04/24/2012  
Author: TerraSystems SW, Inc.  
File: AZBB\_MMPoints\_Spring2013.mxd

Note: Analysis for Census Block, Road Segment Buffers and Wireless Polygons. Some FRNs have more than one reported technology and/or spectra. Does not include Satellite Providers.







# **Arizona Broadband Mapping Program** **Provider Count (unique FRN's) - All Technologies and Spectra Except Satellite** **SPRING 2013 SUBMITTAL**

## **SPRING 2013: Provider Count**

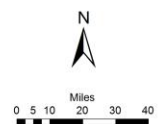


## **Census 2010, Population per Square Mile**



Map Date: 04/22/2012  
 Author: TerraSystems SW, Inc.  
 File: AZBB\_ProviderCount\_Spring2013\_wPopDensity.mxd

Note: Analysis for Census Block, Road Segment Buffers and Wireless Polygons. Some FRNs have more than one reported technology and/or spectra. Does not include Satellite Providers.



## Appendix C - Arizona Broadband Coverage Tables for Spring 2013

All Technologies: Coverage for 768 Kbps Down and Above

All Technologies: Coverage for 3 Mbps Down and Above

All Technologies: Coverage for 6 Mbps Down and Above

DSL, xDSL & Other Copper: Coverage for 768 Kbps Down and Above

DSL, xDSL & Other Copper: Technologies Coverage for 3 Mbps Down and Above

DSL, xDSL & Other Copper: Technologies Coverage for 6 Mbps Down and Above

Cable Modem: Coverage for 768 Kbps Down and Above

Cable Modem: Coverage for 3 Mbps Down and Above

Cable Modem: Coverage for 6 Mbps Down and Above

Cable Modem: Coverage for 10 Mbps Down and Above

Fixed Wireless: Coverage for 768 Kbps Down and Above

Fixed Wireless: Coverage for 3 Mbps Down and Above

Fixed Wireless: Coverage for 6 Mbps Down and Above

Mobile Wireless: Coverage for 768 Kbps Down and Above

Mobile Wireless: Coverage for 3 Mbps Down and Above

Mobile Wireless: Coverage for 6 Mbps Down and Above

### Arizona Broadband Coverage Table Notes:

Data presented in the sixteen tables that follow is as collected by the State of Arizona for the NTIA and FCC broadband maps and submitted in Spring 2013 for Broadband Provider (BP) coverage declared as of 12/31/12.

The Census Bureau identifies two types of urban areas: **Urbanized Areas (UAs)** of 50,000 or more people and **Urban Clusters (UCs)** of at least 2,500 and less than 50,000 people. Per the Census Bureau, “**Rural**” encompasses all population, housing, and territory not included within Urbanized Areas (UAs). For Arizona analysis purposes, “**Sparsely Populated Rural**” encompasses all population, housing, and territory not included within either Urbanized Areas (UA) or Urban Clusters (UC). Using an Urban Area/Cluster GIS Layer, Arizona is calculated to have a total of 241,666 Census Blocks per the 2010 Census of which:

- 86,648 Census Blocks are in Urban Areas (UAs)
- 19,479 Census Blocks are in Urban Clusters (UCs)
- 106,127 Census Blocks total are in Urban Areas (UAs) or Urban Clusters (UCs)
- 155,018 Census Blocks are in Rural areas (Outside UAs only) with a population count of 1,274,234 and household count of 601,889
- 135,539 Census Blocks are in Sparsely Populated Rural areas (Outside both UAs and UCs) with a population count of 651,358 and household count of 329,022

For wireline providers, census blocks greater than 2 square miles intersected by covered road segments were added to their reported list of census blocks less than or equal to 2 sq. mi. For fixed and mobile wireless providers, census block counts were based on census blocks that intersected (were touched by) an overlaying wireless provider's service area. Satellite providers which tend to offer lower downstream and upstream data rates are not included in the Broadband Providers (BPs) for purposes of this analysis. All census blocks, regardless of area or water characteristic were included in this analysis.

**Table 1: All Technologies: Coverage for 768 Kbps Down and Above****(For Spring 2013, All NTIA Codes for All Tech Types (except Satellite) and MaxAdDown >= 3)**

| <b>Statewide Coverage Overall</b>                               | <b>Census Block Count</b> | <b>Population Count</b> | <b>Population %</b> | <b>Household Count</b> | <b>Household %</b> |
|---|---------------------------|-------------------------|---------------------|------------------------|--------------------|
| Census Blocks with One Provider                                 | 23,903                    | 61,563                  | 0.96%               | 26,549                 | 0.93%              |
| Census Blocks with Two or More Providers                        | 192,559                   | 6,298,774               | 98.54%              | 2,803,735              | 98.57%             |
| <b>Total Coverage: Census Blocks with One or More Providers</b> | <b>216,462</b>            | <b>6,360,337</b>        | <b>99.50%</b>       | <b>2,830,284</b>       | <b>99.50%</b>      |
| <b>Total Uncovered: Census Blocks with No Provider</b>          | 25,204                    | 31,680                  | 0.50%               | 14,242                 | 0.50%              |
| <b>Statewide Totals</b>   | <b>241,666</b>            | <b>6,392,017</b>        | <b>100.00%</b>      | <b>2,844,526</b>       | <b>100.00%</b>     |
| <b>Rural Coverage</b>   | <b>Census Block Count</b> | <b>Population Count</b> | <b>Population %</b> | <b>Household Count</b> | <b>Household %</b> |
| Census Blocks with One Provider                                 | 23,903                    | 61,563                  | 4.83%               | 26,549                 | 4.41%              |
| Census Blocks with Two or More Providers                        | 105,911                   | 1,180,991               | 92.68%              | 561,098                | 93.22%             |
| <b>Total Coverage: Census Blocks with One or More Providers</b> | <b>129,814</b>            | <b>1,242,554</b>        | <b>97.51%</b>       | <b>587,647</b>         | <b>97.63%</b>      |
| <b>Total Uncovered: Census Blocks with No Provider</b>          | 25,204                    | 31,680                  | 2.49%               | 14,242                 | 2.37%              |
| <b>Rural Totals</b>   | <b>155,018</b>            | <b>1,274,234</b>        | <b>100.00%</b>      | <b>601,889</b>         | <b>100.00%</b>     |
| <b>Sparsely Populated Rural Coverage</b>                        | <b>Census Block Count</b> | <b>Population Count</b> | <b>Population %</b> | <b>Household Count</b> | <b>Household %</b> |
| Census Blocks with One Provider                                 | 23,318                    | 47,895                  | 7.35%               | 22,872                 | 6.95%              |
| Census Blocks with Two or More Providers                        | 87,052                    | 571,954                 | 87.81%              | 291,956                | 88.73%             |
| <b>Total Coverage: Census Blocks with One or More Providers</b> | <b>110,370</b>            | <b>619,849</b>          | <b>95.16%</b>       | <b>314,828</b>         | <b>95.69%</b>      |
| <b>Total Uncovered: Census Blocks with No Provider</b>          | 25,169                    | 31,509                  | 4.84%               | 14,194                 | 4.31%              |
| <b>Sparsely Populated Rural Totals</b>                          | <b>135,539</b>            | <b>651,358</b>          | <b>100.00%</b>      | <b>329,022</b>         | <b>100.00%</b>     |

**Table 2: All Technologies: Coverage for 3 Mbps Down and Above****(For Spring 2013, All NTIA Codes for All Tech Types (except Satellite) and MaxAdDown >= 5)**

| <b>Statewide Coverage Overall</b>                               | <b>Census Block Count</b> | <b>Population Count</b> | <b>Population %</b> | <b>Household Count</b> | <b>Household %</b> |
|---|---------------------------|-------------------------|---------------------|------------------------|--------------------|
| Census Blocks with One Provider                                 | 26,195                    | 138,044                 | 2.16%               | 67,398                 | 2.37%              |
| Census Blocks with Two or More Providers                        | 148,807                   | 6,111,477               | 95.61%              | 2,706,896              | 95.16%             |
| <b>Total Coverage: Census Blocks with One or More Providers</b> | <b>175,002</b>            | <b>6,249,521</b>        | <b>97.77%</b>       | <b>2,774,294</b>       | <b>97.53%</b>      |
| <b>Total Uncovered: Census Blocks with No Provider</b>          | <b>66,664</b>             | <b>142,496</b>          | <b>2.23%</b>        | <b>70,232</b>          | <b>2.47%</b>       |
| <b>Statewide Totals</b>   | <b>241,666</b>            | <b>6,392,017</b>        | <b>100.00%</b>      | <b>2,844,526</b>       | <b>100.00%</b>     |
| <b>Rural Coverage</b>   | <b>Census Block Count</b> | <b>Population Count</b> | <b>Population %</b> | <b>Household Count</b> | <b>Household %</b> |
| Census Blocks with One Provider                                 | 25,958                    | 137,273                 | 10.77%              | 66,662                 | 11.08%             |
| Census Blocks with Two or More Providers                        | 62,396                    | 994,465                 | 78.04%              | 464,995                | 77.26%             |
| <b>Total Coverage: Census Blocks with One or More Providers</b> | <b>88,354</b>             | <b>1,131,738</b>        | <b>88.82%</b>       | <b>531,657</b>         | <b>88.33%</b>      |
| <b>Total Uncovered: Census Blocks with No Provider</b>          | <b>66,664</b>             | <b>142,496</b>          | <b>11.18%</b>       | <b>70,232</b>          | <b>11.67%</b>      |
| <b>Rural Totals</b>   | <b>155,018</b>            | <b>1,274,234</b>        | <b>100.00%</b>      | <b>601,889</b>         | <b>100.00%</b>     |
| <b>Sparsely Populated Rural Coverage</b>                        | <b>Census Block Count</b> | <b>Population Count</b> | <b>Population %</b> | <b>Household Count</b> | <b>Household %</b> |
| Census Blocks with One Provider                                 | 23,343                    | 91,176                  | 14.00%              | 49,867                 | 15.16%             |
| Census Blocks with Two or More Providers                        | 46,604                    | 440,612                 | 67.65%              | 216,374                | 65.76%             |
| <b>Total Coverage: Census Blocks with One or More Providers</b> | <b>69,947</b>             | <b>531,788</b>          | <b>81.64%</b>       | <b>266,241</b>         | <b>80.92%</b>      |
| <b>Total Uncovered: Census Blocks with No Provider</b>          | <b>65,592</b>             | <b>119,570</b>          | <b>18.36%</b>       | <b>62,781</b>          | <b>19.08%</b>      |
| <b>Sparsely Populated Rural Totals</b>                          | <b>135,539</b>            | <b>651,358</b>          | <b>100.00%</b>      | <b>329,022</b>         | <b>100.00%</b>     |

**Table 3 All Technologies: Coverage for 6 Mbps Down and Above**

(For Spring 2013, All NTIA Codes for All Tech Types (except Satellite) and MaxAdDown &gt;= 6)

| <b>Statewide Coverage Overall</b>                               | <b>Census Block Count</b> | <b>Population Count</b> | <b>Population %</b> | <b>Household Count</b> | <b>Household %</b> |
|---|---------------------------|-------------------------|---------------------|------------------------|--------------------|
| Census Blocks with One Provider                                 | 24,366                    | 291,303                 | 4.56%               | 145,140                | 5.10%              |
| Census Blocks with Two or More Providers                        | 124,262                   | 5,821,467               | 91.07%              | 2,562,733              | 90.09%             |
| <b>Total Coverage: Census Blocks with One or More Providers</b> | <b>148,628</b>            | <b>6,112,770</b>        | <b>95.63%</b>       | <b>2,707,873</b>       | <b>95.20%</b>      |
| <b>Total Uncovered: Census Blocks with No Provider</b>          | 93,038                    | 279,247                 | 4.37%               | 136,653                | 4.80%              |
| <b>Statewide Totals</b>   | <b>241,666</b>            | <b>6,392,017</b>        | <b>100.00%</b>      | <b>2,844,526</b>       | <b>100.00%</b>     |
| <b>Rural Coverage</b>   | <b>Census Block Count</b> | <b>Population Count</b> | <b>Population %</b> | <b>Household Count</b> | <b>Household %</b> |
| Census Blocks with One Provider                                 | 21,514                    | 224,771                 | 17.64%              | 110,182                | 18.31%             |
| Census Blocks with Two or More Providers                        | 40,848                    | 773,196                 | 60.68%              | 358,159                | 59.51%             |
| <b>Total Coverage: Census Blocks with One or More Providers</b> | <b>62,362</b>             | <b>997,967</b>          | <b>78.32%</b>       | <b>468,341</b>         | <b>77.81%</b>      |
| <b>Total Uncovered: Census Blocks with No Provider</b>          | 92,656                    | 276,267                 | 21.68%              | 133,548                | 22.19%             |
| <b>Rural Totals</b>   | <b>155,018</b>            | <b>1,274,234</b>        | <b>100.00%</b>      | <b>601,889</b>         | <b>100.00%</b>     |
| <b>Sparsely Populated Rural Coverage</b>                        | <b>Census Block Count</b> | <b>Population Count</b> | <b>Population %</b> | <b>Household Count</b> | <b>Household %</b> |
| Census Blocks with One Provider                                 | 16,747                    | 114,198                 | 17.53%              | 61,633                 | 18.73%             |
| Census Blocks with Two or More Providers                        | 29,023                    | 324,312                 | 49.79%              | 155,092                | 47.14%             |
| <b>Total Coverage: Census Blocks with One or More Providers</b> | <b>45,770</b>             | <b>438,510</b>          | <b>67.32%</b>       | <b>216,725</b>         | <b>65.87%</b>      |
| <b>Total Uncovered: Census Blocks with No Provider</b>          | 89,769                    | 212,848                 | 32.68%              | 112,297                | 34.13%             |
| <b>Sparsely Populated Rural Totals</b>                          | <b>135,539</b>            | <b>651,358</b>          | <b>100.00%</b>      | <b>329,022</b>         | <b>100.00%</b>     |



**Table 4: DSL, xDSL & Other Copper: Coverage for 768 Kbps Down and Above**

**For Spring 2013, NTIA Codes of Tech 10-30 and MaxAdDown >= 3)**

| <b>Statewide Coverage Overall</b>                               | <b>Census Block Count</b> | <b>Population Count</b> | <b>Population %</b> | <b>Household Count</b> | <b>Household %</b> |
|---|---------------------------|-------------------------|---------------------|------------------------|--------------------|
| Census Blocks with One Provider                                 | 58,472                    | 1,644,898               | 25.73%              | 735,471                | 25.86%             |
| Census Blocks with Two or More Providers                        | 74,690                    | 4,307,001               | 67.38%              | 1,905,415              | 66.99%             |
| <b>Total Coverage: Census Blocks with One or More Providers</b> | <b>133,162</b>            | <b>5,951,899</b>        | <b>93.11%</b>       | <b>2,640,886</b>       | <b>92.84%</b>      |
| <b>Total Uncovered: Census Blocks with No Provider</b>          | <b>108,504</b>            | <b>440,118</b>          | <b>6.89%</b>        | <b>203,640</b>         | <b>7.16%</b>       |
| <b>Statewide Totals</b>   | <b>241,666</b>            | <b>6,392,017</b>        | <b>100.00%</b>      | <b>2,844,526</b>       | <b>100.00%</b>     |
| <b>Rural Coverage</b>   | <b>Census Block Count</b> | <b>Population Count</b> | <b>Population %</b> | <b>Household Count</b> | <b>Household %</b> |
| Census Blocks with One Provider                                 | 40,865                    | 762,566                 | 59.85%              | 352,168                | 58.51%             |
| Census Blocks with Two or More Providers                        | 11,952                    | 172,126                 | 13.51%              | 92,636                 | 15.39%             |
| <b>Total Coverage: Census Blocks with One or More Providers</b> | <b>52,817</b>             | <b>934,692</b>          | <b>73.35%</b>       | <b>444,804</b>         | <b>73.90%</b>      |
| <b>Total Uncovered: Census Blocks with No Provider</b>          | <b>102,201</b>            | <b>339,542</b>          | <b>26.65%</b>       | <b>157,085</b>         | <b>26.10%</b>      |
| <b>Rural Totals</b>   | <b>155,018</b>            | <b>1,274,234</b>        | <b>100.00%</b>      | <b>601,889</b>         | <b>100.00%</b>     |
| <b>Sparsely Populated Rural Coverage</b>                        | <b>Census Block Count</b> | <b>Population Count</b> | <b>Population %</b> | <b>Household Count</b> | <b>Household %</b> |
| Census Blocks with One Provider                                 | 27,023                    | 281,958                 | 43.29%              | 144,683                | 43.97%             |
| Census Blocks with Two or More Providers                        | 10,803                    | 125,383                 | 19.25%              | 66,174                 | 20.11%             |
| <b>Total Coverage: Census Blocks with One or More Providers</b> | <b>37,826</b>             | <b>407,341</b>          | <b>62.54%</b>       | <b>210,857</b>         | <b>64.09%</b>      |
| <b>Total Uncovered: Census Blocks with No Provider</b>          | <b>97,713</b>             | <b>244,017</b>          | <b>37.46%</b>       | <b>118,165</b>         | <b>35.91%</b>      |
| <b>Sparsely Populated Rural Totals</b>                          | <b>135,539</b>            | <b>651,358</b>          | <b>100.00%</b>      | <b>329,022</b>         | <b>100.00%</b>     |

**Table 5: DSL, xDSL & Other Copper: Coverage for 3 Mbps Down and Above**

(For Spring 2013, NTIA Codes of Tech 10-30 and MaxAdDown >= 5)

| <b>Statewide Coverage Overall</b>                               | <b>Census Block Count</b> | <b>Population Count</b> | <b>Population %</b> | <b>Household Count</b> | <b>Household %</b> |
|---|---------------------------|-------------------------|---------------------|------------------------|--------------------|
| Census Blocks with One Provider                                 | 48,907                    | 1,898,790               | 29.71%              | 843,184                | 29.64%             |
| Census Blocks with Two or More Providers                        | 58,006                    | 3,677,872               | 57.54%              | 1,614,656              | 56.76%             |
| <b>Total Coverage: Census Blocks with One or More Providers</b> | <b>106,913</b>            | <b>5,576,662</b>        | <b>87.24%</b>       | <b>2,457,840</b>       | <b>86.41%</b>      |
| <b>Total Uncovered: Census Blocks with No Provider</b>          | 134,753                   | 815,355                 | 12.76%              | 386,686                | 13.59%             |
| <b>Statewide Totals</b>   | <b>241,666</b>            | <b>6,392,017</b>        | <b>100.00%</b>      | <b>2,844,526</b>       | <b>100.00%</b>     |
| <b>Rural Coverage</b>   | <b>Census Block Count</b> | <b>Population Count</b> | <b>Population %</b> | <b>Household Count</b> | <b>Household %</b> |
| Census Blocks with One Provider                                 | 25,756                    | 616,189                 | 48.36%              | 286,507                | 47.60%             |
| Census Blocks with Two or More Providers                        | 5,707                     | 83,810                  | 6.58%               | 45,472                 | 7.55%              |
| <b>Total Coverage: Census Blocks with One or More Providers</b> | <b>31,463</b>             | <b>699,999</b>          | <b>54.93%</b>       | <b>331,979</b>         | <b>55.16%</b>      |
| <b>Total Uncovered: Census Blocks with No Provider</b>          | 123,555                   | 574,235                 | 45.07%              | 269,910                | 44.84%             |
| <b>Rural Totals</b>   | <b>155,018</b>            | <b>1,274,234</b>        | <b>100.00%</b>      | <b>601,889</b>         | <b>100.00%</b>     |
| <b>Sparsely Populated Rural Coverage</b>                        | <b>Census Block Count</b> | <b>Population Count</b> | <b>Population %</b> | <b>Household Count</b> | <b>Household %</b> |
| Census Blocks with One Provider                                 | 14,578                    | 196,191                 | 30.12%              | 99,957                 | 30.38%             |
| Census Blocks with Two or More Providers                        | 5,565                     | 76,689                  | 11.77%              | 41,307                 | 12.55%             |
| <b>Total Coverage: Census Blocks with One or More Providers</b> | <b>20,143</b>             | <b>272,880</b>          | <b>41.89%</b>       | <b>141,264</b>         | <b>42.93%</b>      |
| <b>Total Uncovered: Census Blocks with No Provider</b>          | 115,396                   | 378,478                 | 58.11%              | 187,758                | 57.07%             |
| <b>Sparsely Populated Rural Totals</b>                          | <b>135,539</b>            | <b>651,358</b>          | <b>100.00%</b>      | <b>329,022</b>         | <b>100.00%</b>     |

**Table 6: DSL, xDSL & Other Copper: Coverage for 6 Mbps Down and Above**

(For Spring 2013, NTIA Codes of Tech 10-30 and MaxAdDown >= 6)

| <b>Statewide Coverage Overall</b>                               | <b>Census Block Count</b> | <b>Population Count</b> | <b>Population %</b> | <b>Household Count</b> | <b>Household %</b> |
|---|---------------------------|-------------------------|---------------------|------------------------|--------------------|
| Census Blocks with One Provider                                 | 45,416                    | 2,434,996               | 38.09%              | 1,068,303              | 37.56%             |
| Census Blocks with Two or More Providers                        | 41,681                    | 2,668,860               | 41.75%              | 1,162,126              | 40.85%             |
| <b>Total Coverage: Census Blocks with One or More Providers</b> | <b>87,097</b>             | <b>5,103,856</b>        | <b>79.85%</b>       | <b>2,230,429</b>       | <b>78.41%</b>      |
| <b>Total Uncovered: Census Blocks with No Provider</b>          | 154,569                   | 1,288,161               | 20.15%              | 614,097                | 21.59%             |
| <b>Statewide Totals</b>   | <b>241,666</b>            | <b>6,392,017</b>        | <b>100.00%</b>      | <b>2,844,526</b>       | <b>100.00%</b>     |
| <b>Rural Coverage</b>   | <b>Census Block Count</b> | <b>Population Count</b> | <b>Population %</b> | <b>Household Count</b> | <b>Household %</b> |
| Census Blocks with One Provider                                 | 16,770                    | 479,211                 | 37.61%              | 222,108                | 36.90%             |
| Census Blocks with Two or More Providers                        | 2,821                     | 47,202                  | 3.70%               | 24,761                 | 4.11%              |
| <b>Total Coverage: Census Blocks with One or More Providers</b> | <b>19,591</b>             | <b>526,413</b>          | <b>41.31%</b>       | <b>246,869</b>         | <b>41.02%</b>      |
| <b>Total Uncovered: Census Blocks with No Provider</b>          | 135,427                   | 747,821                 | 58.69%              | 355,020                | 58.98%             |
| <b>Rural Totals</b>   | <b>155,018</b>            | <b>1,274,234</b>        | <b>100.00%</b>      | <b>601,889</b>         | <b>100.00%</b>     |
| <b>Sparsely Populated Rural Coverage</b>                        | <b>Census Block Count</b> | <b>Population Count</b> | <b>Population %</b> | <b>Household Count</b> | <b>Household %</b> |
| Census Blocks with One Provider                                 | 8,648                     | 153,340                 | 23.54%              | 78,661                 | 23.91%             |
| Census Blocks with Two or More Providers                        | 2,761                     | 43,448                  | 6.67%               | 22,724                 | 6.91%              |
| <b>Total Coverage: Census Blocks with One or More Providers</b> | <b>11,409</b>             | <b>196,788</b>          | <b>30.21%</b>       | <b>101,385</b>         | <b>30.81%</b>      |
| <b>Total Uncovered: Census Blocks with No Provider</b>          | 124,130                   | 454,570                 | 69.79%              | 227,637                | 69.19%             |
| <b>Sparsely Populated Rural Totals</b>                          | <b>135,539</b>            | <b>651,358</b>          | <b>100.00%</b>      | <b>329,022</b>         | <b>100.00%</b>     |

**Table 7: Cable Modem: Coverage for 768 Kbps Down and Above****(For Spring 2013, NTIA Codes of Tech 40-41 and MaxAdDown >= 3)**

| <b>Statewide Coverage Overall</b>                               | <b>Census Block Count</b> | <b>Population Count</b> | <b>Population %</b> | <b>Household Count</b> | <b>Household %</b> |
|---|---------------------------|-------------------------|---------------------|------------------------|--------------------|
| Census Blocks with One Provider                                 | 97,398                    | 5,511,653               | 86.23%              | 2,429,221              | 85.40%             |
| Census Blocks with Two or More Providers                        | 2,589                     | 195,025                 | 3.05%               | 94,199                 | 3.31%              |
| <b>Total Coverage: Census Blocks with One or More Providers</b> | <b>99,987</b>             | <b>5,706,678</b>        | <b>89.28%</b>       | <b>2,523,420</b>       | <b>88.71%</b>      |
| <b>Total Uncovered: Census Blocks with No Provider</b>          | 141,679                   | 685,339                 | 10.72%              | 321,106                | 11.29%             |
| <b>Statewide Totals</b>   | <b>241,666</b>            | <b>6,392,017</b>        | <b>100.00%</b>      | <b>2,844,526</b>       | <b>100.00%</b>     |
| <b>Rural Coverage</b>   | <b>Census Block Count</b> | <b>Population Count</b> | <b>Population %</b> | <b>Household Count</b> | <b>Household %</b> |
| Census Blocks with One Provider                                 | 20,505                    | 657,581                 | 51.61%              | 309,602                | 51.44%             |
| Census Blocks with Two or More Providers                        | 1,484                     | 49,426                  | 3.88%               | 26,885                 | 4.47%              |
| <b>Total Coverage: Census Blocks with One or More Providers</b> | <b>21,989</b>             | <b>707,007</b>          | <b>55.48%</b>       | <b>336,487</b>         | <b>55.91%</b>      |
| <b>Total Uncovered: Census Blocks with No Provider</b>          | 133,029                   | 567,227                 | 44.52%              | 265,402                | 44.09%             |
| <b>Rural Totals</b>   | <b>155,018</b>            | <b>1,274,234</b>        | <b>100.00%</b>      | <b>601,889</b>         | <b>100.00%</b>     |
| <b>Sparsely Populated Rural Coverage</b>                        | <b>Census Block Count</b> | <b>Population Count</b> | <b>Population %</b> | <b>Household Count</b> | <b>Household %</b> |
| Census Blocks with One Provider                                 | 7,754                     | 176,349                 | 27.07%              | 95,262                 | 28.95%             |
| Census Blocks with Two or More Providers                        | 1,182                     | 31,669                  | 4.86%               | 17,496                 | 5.32%              |
| <b>Total Coverage: Census Blocks with One or More Providers</b> | <b>8,936</b>              | <b>208,018</b>          | <b>31.94%</b>       | <b>112,758</b>         | <b>34.27%</b>      |
| <b>Total Uncovered: Census Blocks with No Provider</b>          | 126,603                   | 443,340                 | 68.06%              | 216,264                | 65.73%             |
| <b>Sparsely Populated Rural Totals</b>                          | <b>135,539</b>            | <b>651,358</b>          | <b>100.00%</b>      | <b>329,022</b>         | <b>100.00%</b>     |

**Table 8: Cable Modem: Coverage for 3 Mbps Down and Above****(For Spring 2013, NTIA Codes of Tech 40-41 and MaxAdDown >= 5)**

| <b>Statewide Coverage Overall</b>                               | <b>Census Block Count</b> | <b>Population Count</b> | <b>Population %</b> | <b>Household Count</b> | <b>Household %</b> |
|---|---------------------------|-------------------------|---------------------|------------------------|--------------------|
| Census Blocks with One Provider                                 | 97,460                    | 5,539,859               | 86.67%              | 2,445,206              | 85.96%             |
| Census Blocks with Two or More Providers                        | 2,515                     | 166,007                 | 2.60%               | 77,775                 | 2.73%              |
| <b>Total Coverage: Census Blocks with One or More Providers</b> | <b>99,975</b>             | <b>5,705,866</b>        | <b>89.27%</b>       | <b>2,522,981</b>       | <b>88.70%</b>      |
| <b>Total Uncovered: Census Blocks with No Provider</b>          | 141,691                   | 686,151                 | 10.73%              | 321,545                | 11.30%             |
| <b>Statewide Totals</b>   | <b>241,666</b>            | <b>6,392,017</b>        | <b>100.00%</b>      | <b>2,844,526</b>       | <b>100.00%</b>     |
| <b>Rural Coverage</b>   | <b>Census Block Count</b> | <b>Population Count</b> | <b>Population %</b> | <b>Household Count</b> | <b>Household %</b> |
| Census Blocks with One Provider                                 | 20,500                    | 657,500                 | 51.60%              | 309,564                | 51.43%             |
| Census Blocks with Two or More Providers                        | 1,484                     | 49,426                  | 3.88%               | 26,885                 | 4.47%              |
| <b>Total Coverage: Census Blocks with One or More Providers</b> | <b>21,984</b>             | <b>706,926</b>          | <b>55.48%</b>       | <b>336,449</b>         | <b>55.90%</b>      |
| <b>Total Uncovered: Census Blocks with No Provider</b>          | 133,034                   | 567,308                 | 44.52%              | 265,440                | 44.10%             |
| <b>Rural Totals</b>   | <b>155,018</b>            | <b>1,274,234</b>        | <b>100.00%</b>      | <b>601,889</b>         | <b>100.00%</b>     |
| <b>Sparsely Populated Rural Coverage</b>                        | <b>Census Block Count</b> | <b>Population Count</b> | <b>Population %</b> | <b>Household Count</b> | <b>Household %</b> |
| Census Blocks with One Provider                                 | 7,753                     | 176,326                 | 27.07%              | 95,247                 | 28.95%             |
| Census Blocks with Two or More Providers                        | 1,182                     | 31,669                  | 4.86%               | 17,496                 | 5.32%              |
| <b>Total Coverage: Census Blocks with One or More Providers</b> | <b>8,935</b>              | <b>207,995</b>          | <b>31.93%</b>       | <b>112,743</b>         | <b>34.27%</b>      |
| <b>Total Uncovered: Census Blocks with No Provider</b>          | 126,604                   | 443,363                 | 68.07%              | 216,279                | 65.73%             |
| <b>Sparsely Populated Rural Totals</b>                          | <b>135,539</b>            | <b>651,358</b>          | <b>100.00%</b>      | <b>329,022</b>         | <b>100.00%</b>     |



**Table 9: Cable Modem: Coverage for 6 Mbps Down and Above****(For Spring 2013, NTIA Codes of Tech 40-41 and MaxAdDown >= 6)**

| <b>Statewide Coverage Overall</b>                               | <b>Census Block Count</b> | <b>Population Count</b> | <b>Population %</b> | <b>Household Count</b> | <b>Household %</b> |
|---|---------------------------|-------------------------|---------------------|------------------------|--------------------|
| Census Blocks with One Provider                                 | 97,214                    | 5,534,613               | 86.59%              | 2,442,795              | 85.88%             |
| Census Blocks with Two or More Providers                        | 2,509                     | 165,843                 | 2.59%               | 77,690                 | 2.73%              |
| <b>Total Coverage: Census Blocks with One or More Providers</b> | <b>99,723</b>             | <b>5,700,456</b>        | <b>89.18%</b>       | <b>2,520,485</b>       | <b>88.61%</b>      |
| <b>Total Uncovered: Census Blocks with No Provider</b>          | <b>141,943</b>            | <b>691,561</b>          | <b>10.82%</b>       | <b>324,041</b>         | <b>11.39%</b>      |
| <b>Statewide Totals</b>   | <b>241,666</b>            | <b>6,392,017</b>        | <b>100.00%</b>      | <b>2,844,526</b>       | <b>100.00%</b>     |
| <b>Rural Coverage</b>   | <b>Census Block Count</b> | <b>Population Count</b> | <b>Population %</b> | <b>Household Count</b> | <b>Household %</b> |
| Census Blocks with One Provider                                 | 20,273                    | 652,534                 | 51.21%              | 307,264                | 51.05%             |
| Census Blocks with Two or More Providers                        | 1,478                     | 49,262                  | 3.87%               | 26,800                 | 4.45%              |
| <b>Total Coverage: Census Blocks with One or More Providers</b> | <b>21,751</b>             | <b>701,796</b>          | <b>55.08%</b>       | <b>334,064</b>         | <b>55.50%</b>      |
| <b>Total Uncovered: Census Blocks with No Provider</b>          | <b>133,267</b>            | <b>572,438</b>          | <b>44.92%</b>       | <b>267,825</b>         | <b>44.50%</b>      |
| <b>Rural Totals</b>   | <b>155,018</b>            | <b>1,274,234</b>        | <b>100.00%</b>      | <b>601,889</b>         | <b>100.00%</b>     |
| <b>Sparsely Populated Rural Coverage</b>                        | <b>Census Block Count</b> | <b>Population Count</b> | <b>Population %</b> | <b>Household Count</b> | <b>Household %</b> |
| Census Blocks with One Provider                                 | 7,596                     | 173,406                 | 26.62%              | 93,827                 | 28.52%             |
| Census Blocks with Two or More Providers                        | 1,176                     | 31,505                  | 4.84%               | 17,411                 | 5.29%              |
| <b>Total Coverage: Census Blocks with One or More Providers</b> | <b>8,772</b>              | <b>204,911</b>          | <b>31.46%</b>       | <b>111,238</b>         | <b>33.81%</b>      |
| <b>Total Uncovered: Census Blocks with No Provider</b>          | <b>126,767</b>            | <b>446,447</b>          | <b>68.54%</b>       | <b>217,784</b>         | <b>66.19%</b>      |
| <b>Sparsely Populated Rural Totals</b>                          | <b>135,539</b>            | <b>651,358</b>          | <b>100.00%</b>      | <b>329,022</b>         | <b>100.00%</b>     |

**Table 10: Cable Modem: Coverage for 10 Mbps Down and Above****(For Spring 2013, NTIA Codes of Tech 40-41 and MaxAdDown >= 7)**

| <b>Statewide Coverage Overall</b>                               | <b>Census Block Count</b> | <b>Population Count</b> | <b>Population %</b> | <b>Household Count</b> | <b>Household %</b> |
|---|---------------------------|-------------------------|---------------------|------------------------|--------------------|
| Census Blocks with One Provider                                 | 97,214                    | 5,534,613               | 86.59%              | 2,442,795              | 85.88%             |
| Census Blocks with Two or More Providers                        | 2,509                     | 165,843                 | 2.59%               | 77,690                 | 2.73%              |
| <b>Total Coverage: Census Blocks with One or More Providers</b> | <b>99,723</b>             | <b>5,700,456</b>        | <b>89.18%</b>       | <b>2,520,485</b>       | <b>88.61%</b>      |
| <b>Total Uncovered: Census Blocks with No Provider</b>          | <b>141,943</b>            | <b>691,561</b>          | <b>10.82%</b>       | <b>324,041</b>         | <b>11.39%</b>      |
| <b>Statewide Totals</b>   | <b>241,666</b>            | <b>6,392,017</b>        | <b>100.00%</b>      | <b>2,844,526</b>       | <b>100.00%</b>     |
| <b>Rural Coverage</b>   | <b>Census Block Count</b> | <b>Population Count</b> | <b>Population %</b> | <b>Household Count</b> | <b>Household %</b> |
| Census Blocks with One Provider                                 | 20,273                    | 652,534                 | 51.21%              | 307,264                | 51.05%             |
| Census Blocks with Two or More Providers                        | 1,478                     | 49,262                  | 3.87%               | 26,800                 | 4.45%              |
| <b>Total Coverage: Census Blocks with One or More Providers</b> | <b>21,751</b>             | <b>701,796</b>          | <b>55.08%</b>       | <b>334,064</b>         | <b>55.50%</b>      |
| <b>Total Uncovered: Census Blocks with No Provider</b>          | <b>133,267</b>            | <b>572,438</b>          | <b>44.92%</b>       | <b>267,825</b>         | <b>44.50%</b>      |
| <b>Rural Totals</b>   | <b>155,018</b>            | <b>1,274,234</b>        | <b>100.00%</b>      | <b>601,889</b>         | <b>100.00%</b>     |
| <b>Sparsely Populated Rural Coverage</b>                        | <b>Census Block Count</b> | <b>Population Count</b> | <b>Population %</b> | <b>Household Count</b> | <b>Household %</b> |
| Census Blocks with One Provider                                 | 7,596                     | 173,406                 | 26.62%              | 93,827                 | 28.52%             |
| Census Blocks with Two or More Providers                        | 1,176                     | 31,505                  | 4.84%               | 17,411                 | 5.29%              |
| <b>Total Coverage: Census Blocks with One or More Providers</b> | <b>8,772</b>              | <b>204,911</b>          | <b>31.46%</b>       | <b>111,238</b>         | <b>33.81%</b>      |
| <b>Total Uncovered: Census Blocks with No Provider</b>          | <b>126,767</b>            | <b>446,447</b>          | <b>68.54%</b>       | <b>217,784</b>         | <b>66.19%</b>      |
| <b>Sparsely Populated Rural Totals</b>                          | <b>135,539</b>            | <b>651,358</b>          | <b>100.00%</b>      | <b>329,022</b>         | <b>100.00%</b>     |

**Table 11: Fixed Wireless: Coverage for 768 Kbps Down and Above****(For Spring 2013, NTIA Codes of Tech 70-71 and MaxAdDown >= 3)**

| <b>Statewide Coverage Overall</b>                               | <b>Census Block Count</b> | <b>Population Count</b> | <b>Population %</b> | <b>Household Count</b> | <b>Household %</b> |
|---|---------------------------|-------------------------|---------------------|------------------------|--------------------|
| Census Blocks with One Provider                                 | 54,351                    | 904,234                 | 14.15%              | 434,605                | 15.28%             |
| Census Blocks with Two or More Providers                        | 104,466                   | 5,150,515               | 80.58%              | 2,252,283              | 79.18%             |
| <b>Total Coverage: Census Blocks with One or More Providers</b> | <b>158,817</b>            | <b>6,054,749</b>        | <b>94.72%</b>       | <b>2,686,888</b>       | <b>94.46%</b>      |
| <b>Total Uncovered: Census Blocks with No Provider</b>          | 82,849                    | 337,268                 | 5.28%               | 157,638                | 5.54%              |
| <b>Statewide Totals</b>   | <b>241,666</b>            | <b>6,392,017</b>        | <b>100.00%</b>      | <b>2,844,526</b>       | <b>100.00%</b>     |
| <b>Rural Coverage</b>   | <b>Census Block Count</b> | <b>Population Count</b> | <b>Population %</b> | <b>Household Count</b> | <b>Household %</b> |
| Census Blocks with One Provider                                 | 43,020                    | 431,651                 | 33.88%              | 213,341                | 35.45%             |
| Census Blocks with Two or More Providers                        | 30,074                    | 538,386                 | 42.25%              | 244,731                | 40.66%             |
| <b>Total Coverage: Census Blocks with One or More Providers</b> | <b>73,094</b>             | <b>970,037</b>          | <b>76.13%</b>       | <b>458,072</b>         | <b>76.11%</b>      |
| <b>Total Uncovered: Census Blocks with No Provider</b>          | 81,924                    | 304,197                 | 23.87%              | 143,817                | 23.89%             |
| <b>Rural Totals</b>   | <b>155,018</b>            | <b>1,274,234</b>        | <b>100.00%</b>      | <b>601,889</b>         | <b>100.00%</b>     |
| <b>Sparsely Populated Rural Coverage</b>                        | <b>Census Block Count</b> | <b>Population Count</b> | <b>Population %</b> | <b>Household Count</b> | <b>Household %</b> |
| Census Blocks with One Provider                                 | 36,090                    | 198,446                 | 30.47%              | 111,469                | 33.88%             |
| Census Blocks with Two or More Providers                        | 22,676                    | 246,398                 | 37.83%              | 114,110                | 34.68%             |
| <b>Total Coverage: Census Blocks with One or More Providers</b> | <b>58,766</b>             | <b>444,844</b>          | <b>68.29%</b>       | <b>225,579</b>         | <b>68.56%</b>      |
| <b>Total Uncovered: Census Blocks with No Provider</b>          | 76,773                    | 206,514                 | 31.71%              | 103,443                | 31.44%             |
| <b>Sparsely Populated Rural Totals</b>                          | <b>135,539</b>            | <b>651,358</b>          | <b>100.00%</b>      | <b>329,022</b>         | <b>100.00%</b>     |

**Table 12: Fixed Wireless: Coverage for 3 Mbps Down and Above****(For Spring 2013, NTIA Codes of Tech 70-71 and MaxAdDown >= 5)**

| <b>Statewide Coverage Overall</b>                               | <b>Census Block Count</b> | <b>Population Count</b> | <b>Population %</b> | <b>Household Count</b> | <b>Household %</b> |
|---|---------------------------|-------------------------|---------------------|------------------------|--------------------|
| Census Blocks with One Provider                                 | 66,987                    | 2,365,461               | 37.01%              | 1,085,764              | 38.17%             |
| Census Blocks with Two or More Providers                        | 38,444                    | 1,597,932               | 25.00%              | 702,577                | 24.70%             |
| <b>Total Coverage: Census Blocks with One or More Providers</b> | <b>105,431</b>            | <b>3,963,393</b>        | <b>62.01%</b>       | <b>1,788,341</b>       | <b>62.87%</b>      |
| <b>Total Uncovered: Census Blocks with No Provider</b>          | 136,235                   | 2,428,624               | 37.99%              | 1,056,185              | 37.13%             |
| <b>Statewide Totals</b>   | <b>241,666</b>            | <b>6,392,017</b>        | <b>100.00%</b>      | <b>2,844,526</b>       | <b>100.00%</b>     |
| <b>Rural Coverage</b>   | <b>Census Block Count</b> | <b>Population Count</b> | <b>Population %</b> | <b>Household Count</b> | <b>Household %</b> |
| Census Blocks with One Provider                                 | 37,342                    | 528,654                 | 41.49%              | 261,885                | 43.51%             |
| Census Blocks with Two or More Providers                        | 16,735                    | 275,057                 | 21.59%              | 111,758                | 18.57%             |
| <b>Total Coverage: Census Blocks with One or More Providers</b> | <b>54,077</b>             | <b>803,711</b>          | <b>63.07%</b>       | <b>373,643</b>         | <b>62.08%</b>      |
| <b>Total Uncovered: Census Blocks with No Provider</b>          | 100,941                   | 470,523                 | 36.93%              | 228,246                | 37.92%             |
| <b>Rural Totals</b>   | <b>155,018</b>            | <b>1,274,234</b>        | <b>100.00%</b>      | <b>601,889</b>         | <b>100.00%</b>     |
| <b>Sparsely Populated Rural Coverage</b>                        | <b>Census Block Count</b> | <b>Population Count</b> | <b>Population %</b> | <b>Household Count</b> | <b>Household %</b> |
| Census Blocks with One Provider                                 | 29,126                    | 228,467                 | 35.08%              | 120,081                | 36.50%             |
| Census Blocks with Two or More Providers                        | 12,363                    | 117,937                 | 18.11%              | 49,336                 | 14.99%             |
| <b>Total Coverage: Census Blocks with One or More Providers</b> | <b>41,489</b>             | <b>346,404</b>          | <b>53.18%</b>       | <b>169,417</b>         | <b>51.49%</b>      |
| <b>Total Uncovered: Census Blocks with No Provider</b>          | 94,050                    | 304,954                 | 46.82%              | 159,605                | 48.51%             |
| <b>Sparsely Populated Rural Totals</b>                          | <b>135,539</b>            | <b>651,358</b>          | <b>100.00%</b>      | <b>329,022</b>         | <b>100.00%</b>     |

**Table 13: Fixed Wireless: Coverage for 6 Mbps Down and Above****(For Spring 2013, NTIA Codes of Tech 70-71 and MaxAdDown >= 6)**

| <b>Statewide Coverage Overall</b>                               | <b>Census Block Count</b> | <b>Population Count</b> | <b>Population %</b> | <b>Household Count</b> | <b>Household %</b> |
|---|---------------------------|-------------------------|---------------------|------------------------|--------------------|
| Census Blocks with One Provider                                 | 43,441                    | 2,008,471               | 31.42%              | 896,581                | 31.52%             |
| Census Blocks with Two or More Providers                        | 7,126                     | 213,156                 | 3.33%               | 95,751                 | 3.37%              |
| <b>Total Coverage: Census Blocks with One or More Providers</b> | <b>50,567</b>             | <b>2,221,627</b>        | <b>34.76%</b>       | <b>992,332</b>         | <b>34.89%</b>      |
| <b>Total Uncovered: Census Blocks with No Provider</b>          | 191,099                   | 4,170,390               | 65.24%              | 1,852,194              | 65.11%             |
| <b>Statewide Totals</b>   | <b>241,666</b>            | <b>6,392,017</b>        | <b>100.00%</b>      | <b>2,844,526</b>       | <b>100.00%</b>     |
| <b>Rural Coverage</b>   | <b>Census Block Count</b> | <b>Population Count</b> | <b>Population %</b> | <b>Household Count</b> | <b>Household %</b> |
| Census Blocks with One Provider                                 | 16,302                    | 245,040                 | 19.23%              | 111,819                | 18.58%             |
| Census Blocks with Two or More Providers                        | 3,903                     | 71,107                  | 5.58%               | 25,381                 | 4.22%              |
| <b>Total Coverage: Census Blocks with One or More Providers</b> | <b>20,205</b>             | <b>316,147</b>          | <b>24.81%</b>       | <b>137,200</b>         | <b>22.79%</b>      |
| <b>Total Uncovered: Census Blocks with No Provider</b>          | 134,813                   | 958,087                 | 75.19%              | 464,689                | 77.21%             |
| <b>Rural Totals</b>   | <b>155,018</b>            | <b>1,274,234</b>        | <b>100.00%</b>      | <b>601,889</b>         | <b>100.00%</b>     |
| <b>Sparsely Populated Rural Coverage</b>                        | <b>Census Block Count</b> | <b>Population Count</b> | <b>Population %</b> | <b>Household Count</b> | <b>Household %</b> |
| Census Blocks with One Provider                                 | 12,032                    | 98,338                  | 15.10%              | 45,609                 | 13.86%             |
| Census Blocks with Two or More Providers                        | 2,881                     | 32,288                  | 4.96%               | 12,515                 | 3.80%              |
| <b>Total Coverage: Census Blocks with One or More Providers</b> | <b>14,913</b>             | <b>130,626</b>          | <b>20.05%</b>       | <b>58,124</b>          | <b>17.67%</b>      |
| <b>Total Uncovered: Census Blocks with No Provider</b>          | 120,626                   | 520,732                 | 79.95%              | 270,898                | 82.33%             |
| <b>Sparsely Populated Rural Totals</b>                          | <b>135,539</b>            | <b>651,358</b>          | <b>100.00%</b>      | <b>329,022</b>         | <b>100.00%</b>     |



**Table 14: Mobile Wireless: Coverage for 768 Kbps Down and Above****(For Spring 2013, NTIA Codes of Tech 80 and MaxAdDown >= 3)**

| <b>Statewide Coverage Overall</b>                               | <b>Census Block Count</b> | <b>Population Count</b> | <b>Population %</b> | <b>Household Count</b> | <b>Household %</b> |
|---|---------------------------|-------------------------|---------------------|------------------------|--------------------|
| Census Blocks with One Provider                                 | 37,400                    | 168,832                 | 2.64%               | 95,577                 | 3.36%              |
| Census Blocks with Two or More Providers                        | 170,129                   | 6,142,350               | 96.09%              | 2,716,478              | 95.50%             |
| <b>Total Coverage: Census Blocks with One or More Providers</b> | <b>207,529</b>            | <b>6,311,182</b>        | <b>98.74%</b>       | <b>2,812,055</b>       | <b>98.86%</b>      |
| <b>Total Uncovered: Census Blocks with No Provider</b>          | <b>34,137</b>             | <b>80,835</b>           | <b>1.26%</b>        | <b>32,471</b>          | <b>1.14%</b>       |
| <b>Statewide Totals</b>   | <b>241,666</b>            | <b>6,392,017</b>        | <b>100.00%</b>      | <b>2,844,526</b>       | <b>100.00%</b>     |
| <b>Rural Coverage</b>   | <b>Census Block Count</b> | <b>Population Count</b> | <b>Population %</b> | <b>Household Count</b> | <b>Household %</b> |
| Census Blocks with One Provider                                 | 37,396                    | 168,832                 | 13.25%              | 95,577                 | 15.88%             |
| Census Blocks with Two or More Providers                        | 83,485                    | 1,024,567               | 80.41%              | 473,841                | 78.73%             |
| <b>Total Coverage: Census Blocks with One or More Providers</b> | <b>120,881</b>            | <b>1,193,399</b>        | <b>93.66%</b>       | <b>569,418</b>         | <b>94.61%</b>      |
| <b>Total Uncovered: Census Blocks with No Provider</b>          | <b>34,137</b>             | <b>80,835</b>           | <b>6.34%</b>        | <b>32,471</b>          | <b>5.39%</b>       |
| <b>Rural Totals</b>   | <b>155,018</b>            | <b>1,274,234</b>        | <b>100.00%</b>      | <b>601,889</b>         | <b>100.00%</b>     |
| <b>Sparsely Populated Rural Coverage</b>                        | <b>Census Block Count</b> | <b>Population Count</b> | <b>Population %</b> | <b>Household Count</b> | <b>Household %</b> |
| Census Blocks with One Provider                                 | 34,177                    | 102,029                 | 15.66%              | 61,956                 | 18.83%             |
| Census Blocks with Two or More Providers                        | 67,928                    | 485,466                 | 74.53%              | 239,222                | 72.71%             |
| <b>Total Coverage: Census Blocks with One or More Providers</b> | <b>102,105</b>            | <b>587,495</b>          | <b>90.20%</b>       | <b>301,178</b>         | <b>91.54%</b>      |
| <b>Total Uncovered: Census Blocks with No Provider</b>          | <b>33,434</b>             | <b>63,863</b>           | <b>9.80%</b>        | <b>27,844</b>          | <b>8.46%</b>       |
| <b>Sparsely Populated Rural Totals</b>                          | <b>135,539</b>            | <b>651,358</b>          | <b>100.00%</b>      | <b>329,022</b>         | <b>100.00%</b>     |

**Table 15: Mobile Wireless: Coverage for 3 Mbps Down and Above****(For Spring 2013, NTIA Codes of Tech 80 and MaxAdDown >= 5)**

| <b>Statewide Coverage Overall</b>                               | <b>Census Block Count</b> | <b>Population Count</b> | <b>Population %</b> | <b>Household Count</b> | <b>Household %</b> |
|---|---------------------------|-------------------------|---------------------|------------------------|--------------------|
| Census Blocks with One Provider                                 | 29,611                    | 440,932                 | 6.90%               | 218,569                | 7.68%              |
| Census Blocks with Two or More Providers                        | 113,991                   | 5,489,056               | 85.87%              | 2,384,861              | 83.84%             |
| <b>Total Coverage: Census Blocks with One or More Providers</b> | <b>143,602</b>            | <b>5,929,988</b>        | <b>92.77%</b>       | <b>2,603,430</b>       | <b>91.52%</b>      |
| <b>Total Uncovered: Census Blocks with No Provider</b>          | <b>98,064</b>             | <b>462,029</b>          | <b>7.23%</b>        | <b>241,096</b>         | <b>8.48%</b>       |
| <b>Statewide Totals</b>   | <b>241,666</b>            | <b>6,392,017</b>        | <b>100.00%</b>      | <b>2,844,526</b>       | <b>100.00%</b>     |
| <b>Rural Coverage</b>   | <b>Census Block Count</b> | <b>Population Count</b> | <b>Population %</b> | <b>Household Count</b> | <b>Household %</b> |
| Census Blocks with One Provider                                 | 25,146                    | 304,360                 | 23.89%              | 149,281                | 24.80%             |
| Census Blocks with Two or More Providers                        | 33,231                    | 561,285                 | 44.05%              | 244,358                | 40.60%             |
| <b>Total Coverage: Census Blocks with One or More Providers</b> | <b>58,377</b>             | <b>865,645</b>          | <b>67.93%</b>       | <b>393,639</b>         | <b>65.40%</b>      |
| <b>Total Uncovered: Census Blocks with No Provider</b>          | <b>96,641</b>             | <b>408,589</b>          | <b>32.07%</b>       | <b>208,250</b>         | <b>34.60%</b>      |
| <b>Rural Totals</b>   | <b>155,018</b>            | <b>1,274,234</b>        | <b>100.00%</b>      | <b>601,889</b>         | <b>100.00%</b>     |
| <b>Sparsely Populated Rural Coverage</b>                        | <b>Census Block Count</b> | <b>Population Count</b> | <b>Population %</b> | <b>Household Count</b> | <b>Household %</b> |
| Census Blocks with One Provider                                 | 19,106                    | 117,119                 | 17.98%              | 62,480                 | 18.99%             |
| Census Blocks with Two or More Providers                        | 26,906                    | 280,045                 | 42.99%              | 125,694                | 38.20%             |
| <b>Total Coverage: Census Blocks with One or More Providers</b> | <b>46,012</b>             | <b>397,164</b>          | <b>60.97%</b>       | <b>188,174</b>         | <b>57.19%</b>      |
| <b>Total Uncovered: Census Blocks with No Provider</b>          | <b>89,527</b>             | <b>254,194</b>          | <b>39.03%</b>       | <b>140,848</b>         | <b>42.81%</b>      |
| <b>Sparsely Populated Rural Totals</b>                          | <b>135,539</b>            | <b>651,358</b>          | <b>100.00%</b>      | <b>329,022</b>         | <b>100.00%</b>     |

**Table 16: Mobile Wireless: Coverage for 6 Mbps Down and Above****(For Spring 2013, NTIA Codes of Tech 80 and MaxAdDown >= 6)**

| <b>Statewide Coverage Overall</b>                               | <b>Census Block Count</b> | <b>Population Count</b> | <b>Population %</b> | <b>Household Count</b> | <b>Household %</b> |
|---|---------------------------|-------------------------|---------------------|------------------------|--------------------|
| Census Blocks with One Provider                                 | 22,633                    | 442,431                 | 6.92%               | 204,694                | 7.20%              |
| Census Blocks with Two or More Providers                        | 97,104                    | 5,117,926               | 80.07%              | 2,220,425              | 78.06%             |
| <b>Total Coverage: Census Blocks with One or More Providers</b> | <b>119,737</b>            | <b>5,560,357</b>        | <b>86.99%</b>       | <b>2,425,119</b>       | <b>85.26%</b>      |
| <b>Total Uncovered: Census Blocks with No Provider</b>          | 121,929                   | 831,660                 | 13.01%              | 419,407                | 14.74%             |
| <b>Statewide Totals</b>   | <b>241,666</b>            | <b>6,392,017</b>        | <b>100.00%</b>      | <b>2,844,526</b>       | <b>100.00%</b>     |
| <b>Rural Coverage</b>   | <b>Census Block Count</b> | <b>Population Count</b> | <b>Population %</b> | <b>Household Count</b> | <b>Household %</b> |
| Census Blocks with One Provider                                 | 18,229                    | 268,802                 | 21.10%              | 123,368                | 20.50%             |
| Census Blocks with Two or More Providers                        | 20,646                    | 361,564                 | 28.38%              | 159,667                | 26.53%             |
| <b>Total Coverage: Census Blocks with One or More Providers</b> | <b>38,875</b>             | <b>630,366</b>          | <b>49.47%</b>       | <b>283,035</b>         | <b>47.02%</b>      |
| <b>Total Uncovered: Census Blocks with No Provider</b>          | 116,143                   | 643,868                 | 50.53%              | 318,854                | 52.98%             |
| <b>Rural Totals</b>   | <b>155,018</b>            | <b>1,274,234</b>        | <b>100.00%</b>      | <b>601,889</b>         | <b>100.00%</b>     |
| <b>Sparsely Populated Rural Coverage</b>                        | <b>Census Block Count</b> | <b>Population Count</b> | <b>Population %</b> | <b>Household Count</b> | <b>Household %</b> |
| Census Blocks with One Provider                                 | 14,183                    | 135,827                 | 20.85%              | 62,636                 | 19.04%             |
| Census Blocks with Two or More Providers                        | 16,902                    | 174,203                 | 26.74%              | 80,416                 | 24.44%             |
| <b>Total Coverage: Census Blocks with One or More Providers</b> | <b>31,085</b>             | <b>310,030</b>          | <b>47.60%</b>       | <b>143,052</b>         | <b>43.48%</b>      |
| <b>Total Uncovered: Census Blocks with No Provider</b>          | 104,454                   | 341,328                 | 52.40%              | 185,970                | 56.52%             |
| <b>Sparsely Populated Rural Totals</b>                          | <b>135,539</b>            | <b>651,358</b>          | <b>100.00%</b>      | <b>329,022</b>         | <b>100.00%</b>     |

&lt;EOF&gt;

# Appendix D - Data Submittal Technical Appendix for Spring 2013

## Introduction

This document provides broadband data specifications and delivery options for the **Arizona Broadband Assessment Project (AZ BAP)**, which is part of the nationwide **National Telecommunications Information Agency (NTIA)** Broadband Data and Development Program in cooperation with the **Federal Communications Commission (FCC)** through the **American Recovery and Reinvestment Act (ARRA)**. This document is designed to inform and support Arizona's **Broadband Providers (BPs)** who are submitting biannual broadband coverage data. Additional assistance is available through our contact information below.

The Arizona Broadband Assessment Project (AZ BAP) is managed by the **Arizona Strategic Enterprise Technology Office (ASET, formerly GITA)**, in conjunction with the **Arizona State Land Department (ASLD)** to meet federal data submittal requirements and contribute to an overall national broadband map and complementary state broadband map, as well as to inform Arizona policy makers and help determine where future improvements in policy, process, and infrastructure should be supported in the State. **Data Site Consortium, Inc. (DSCI)** is acting as the State's Contractor to assist in support of this broadband assessment initiative.

## Overview

Under the NTIA program, each **Broadband Provider (BP)** is requested to provide information regarding the availability, technology of transmission and downstream/upstream speed of broadband services if their company or organization:

- Offers broadband services to end users in Arizona, or could do so within a typical service interval without extraordinary effort, or
- Owns facilities in Arizona that make possible the delivery of broadband services by other companies meeting the description above.

Throughout this document, we address how data may be formatted and securely transferred to the State of Arizona through DSCI. The availability and validity of your data is critical to portray your broadband coverage accurately. After reviewing your submitted data, we will get back to you with any questions and feedback, as well as access instructions to download the processed data in map display and GIS formats.

While we ask every BP to submit data in the NTIA format described below, we recognize the significant effort this may require. Ultimately, we seek the data in a format easiest and most practical for the BP and we're glad to provide support in the preparation and submittal of the data. Where possible, we're requesting your data submittal reflect your complete coverage rather than indicating incremental changes from a prior submittal. A "full" submittal of complete data is much more straightforward and less error prone to work with. Please note:



- As broadband technologies and deployments continue to evolve, the NTIA has expanded and/or shifted the acceptable speeds for some technology types. Please see the updated Technical Appendix and new speed vs. technology type chart for more information, especially if you're now delivering higher broadband speeds than previously.
- The federal requirements have shifted to protocols based on Census 2010 census blocks and coding. If you haven't made the shift from earlier versions, we'll be glad to help or work with you in transforming and verifying your data in the newer format.

It is imperative that we capture as much information that correctly depicts a particular coverage area. Where available, provide "homes passed" information or areas that may not have current customers, but are serviceable. ***Beyond your broadband coverage data, the State would like us to collect information as to the actual customer addresses passed or served by you.*** See further details in this Technical Appendix and/or contact us to discuss.

In addition to your broadband coverage data, the State would like us to also collect information as to your number of customers in Arizona for each broadband technology and speed tier you provide and the range of pricing. A convenient table is included in the accompanying cover letter that we would like you to fill out and return via e-mail or mail

Provider data may be uploaded to DSCI and the State of Arizona through a simple, safe, and secure website at <https://www.azbbmp.com/>. Each provider will be given a unique username and password that will be active only during the submittal period and again when your processed data is ready for your download and review. Refer to page 10 of this document for additional details.

## Definitions

"Broadband service" is the provision, on either a commercial or noncommercial basis, of data transmission technology that provides data transmission to and from the Internet with advertised speeds of at least 768 kilobits per second (kbps) downstream, and greater than 200 kbps upstream, to end users.

A "facilities-based" broadband provider offers service connections to end user locations if the company or organization:

1. Owns the portion of the physical facility that terminates at the end user location
2. Obtains unbundled network elements (UNEs), special access lines or other leased facilities that terminate at the end user location and supplies or equips them as broadband, or
3. Supplies or equips a broadband wireless channel to the end user location over licensed or unlicensed wireless spectrums including satellite transmission.

For this purpose, "broadband service" is "available" at a location if the provider does, or could, within a typical service interval (7 to 10 business days) without an extraordinary commitment of resources.

An “end user” of broadband service is a residential or business party, institution, or state or local government entity that may use broadband Internet service for its own purposes, and that does not resell such service to other entities or incorporate such service into retail Internet-access services that it provides. (For this purpose, Internet Service Providers “ISPs” are not “end users.”)

## Requested Data

The State of Arizona asks that each BP contribute detailed data for both their wireline and/or wireless coverage areas. In addition to coverage areas, information regarding transmission technology, upstream and downstream speed is also requested.

All data submittals should include “common” information, including,

1. Technology of Transmission
2. Speed (Upstream/Downstream)
3. FRN (FCC Registration Number)

### Technology of Transmission

The technology of transmission refers to the methodology or platform(s) by which a BP services their customer. The NTIA has developed a “model” where specific codes depict different technologies:

| Code | Description                                   |
|------|---|
| 10   | Asymmetric DSL                                |
| 20   | Symmetric DSL                                 |
| 30   | Other Copper Wireline - T1, NxT1, EOC         |
| 40   | Cable Modem - DOCSIS 3.0                      |
| 41   | Cable Modem - Other                           |
| 50   | Optical Fiber or Fiber to the End User (FTTx) |
| 60   | Satellite                                     |
| 70   | Terrestrial Fixed Wireless - Unlicensed       |
| 71   | Terrestrial Fixed Wireless - Licensed         |
| 80   | Terrestrial Mobile Wireless                   |
| 90   | Electric Power Line                           |
| 0    | All Other                                     |

## **Speed Tables**

Speed of Broadband service(s) should be specified as both maximum advertised upstream and downstream speeds as well as “typical” speeds achieved by end users. The NTIA has established a set of codes for upstream and downstream bandwidth speeds:

| Speed Tier Codes Table |                     |  |
|------------------------|---------------------|--|
| Upload Speed Tier      | Download Speed Tier | Description  |
| 2                      | n/a                 | Greater than 200 Kbps and less than 768 Kbps             |
| 3                      | 3                   | Greater than or equal to 768 Kbps and less than 1.5 Mbps |
| 4                      | 4                   | Greater than or equal to 1.5 Mbps and less than 3 Mbps   |
| 5                      | 5                   | Greater than or equal to 3 Mbps and less than 6 Mbps     |
| 6                      | 6                   | Greater than or equal to 6 Mbps and less than 10 Mbps    |
| 7                      | 7                   | Greater than or equal to 10 Mbps and less than 25 Mbps   |
| 8                      | 8                   | Greater than or equal to 25 Mbps and less than 50 Mbps   |
| 9                      | 9                   | Greater than or equal to 50 Mbps and less than 100 Mbps  |
| 10                     | 10                  | Greater than or equal to 100 Mbps and less than 1 Gbps   |
| 11                     | 11                  | Greater than or equal to 1 Gbps                          |

**Please note that, for a particular transmission technology, not all speeds are applicable, and submitted data will be checked against the NTIA established applicable speeds for each technology type. Please review the table below for acceptable speed values by technology.**

|                       |   | NTIA Speed Tier Codes    |                          |                  |                |                 |                  |                  |                   |                  |       |
|-----------------------|---|--------------------------|--------------------------|------------------|----------------|-----------------|------------------|------------------|-------------------|------------------|-------|
|                       |   | 2                        | 3                        | 4                | 5              | 6               | 7                | 8                | 9                 | 10               | 11    |
|                       |   | > 200 K<br>< 768 K       | > 768 K<br>< 1.5 M       | > 1.5 M<br>< 3 M | > 3 M<br>< 6 M | > 6 M <<br>10 M | > 10 M<br>< 25 M | > 25 M<br>< 50 M | > 50 M <<br>100 M | > 100 M<br>< 1 G | > 1 G |
| NTIA Technology Codes |   |                          |                          |                  |                |                 |                  |                  |                   |                  |       |
| 10                    | Asymmetric xDSL                         | Maximum Upstream Range   |                          |                  |                |                 |                  |                  |                   |                  |       |
|                       |   |                          | Maximum Downstream Range |                  |                |                 |                  |                  |                   |                  |       |
| 20                    | Symmetric xDSL                          | Maximum Downstream Range |                          |                  |                |                 |                  |                  |                   |                  |       |
|                       |   |                          | Maximum Downstream Range |                  |                |                 |                  |                  |                   |                  |       |
| 30                    | Other Copper Wireline                   | Maximum Upstream Range   |                          |                  |                |                 |                  |                  |                   |                  |       |
|                       |   |                          | Maximum Downstream Range |                  |                |                 |                  |                  |                   |                  |       |
| 40                    | Cable Modem - DOCSIS 3.0                | Maximum Upstream Range   |                          |                  |                |                 |                  |                  |                   |                  |       |
|                       |   |                          |                          |                  |                |                 |                  | Max Down Range   |                   |                  |       |
| 41                    | Cable Modem - Other                     | Maximum Upstream Range   |                          |                  |                |                 |                  |                  |                   |                  |       |
|                       |   |                          | Maximum Downstream Range |                  |                |                 |                  |                  |                   |                  |       |
| 50                    | Optical Carrier/Fiber to End User       | Maximum Upstream Range   |                          |                  |                |                 |                  |                  |                   |                  |       |
|                       |   |                          | Maximum Downstream Range |                  |                |                 |                  |                  |                   |                  |       |
| 60                    | Satellite                               | Maximum Up Range         |                          |                  |                |                 |                  |                  |                   |                  |       |
|                       |   |                          | Maximum Down Range       |                  |                |                 |                  |                  |                   |                  |       |
| 70                    | Terrestrial Fixed Wireless - Unlicensed | Maximum Upstream Range   |                          |                  |                |                 |                  |                  |                   |                  |       |
|                       |   |                          | Maximum Downstream Range |                  |                |                 |                  |                  |                   |                  |       |
| 71                    | Terrestrial Fixed Wireless - Licensed   | Maximum Upstream Range   |                          |                  |                |                 |                  |                  |                   |                  |       |
|                       |   |                          | Maximum Downstream Range |                  |                |                 |                  |                  |                   |                  |       |
| 80                    | Terrestrial Mobile Wireless             | Maximum Upstream Range   |                          |                  |                |                 |                  |                  |                   |                  |       |
|                       |   |                          | Maximum Downstream Range |                  |                |                 |                  |                  |                   |                  |       |
| 90                    | Electric Power Line                     | Maximum Upstream Range   |                          |                  |                |                 |                  |                  |                   |                  |       |
|                       |   |                          | Maximum Down Range       |                  |                |                 |                  |                  |                   |                  |       |



## **FCC Registration Number (FRN)**

We ask that each BP provide their FCC Registration Number(s) (FRN). If any BP has more than one FRN, we ask that each data set submitted be tied to one and only one FRN. BPs will multiple operating entities and FRNs can work with us in best reflecting their broadband coverage consistent with their corporate identity and marketing. If in doubt concerning your FRN, please visit <https://fjallfoss.fcc.gov/coresWeb/simpleSearch.do> for verification.

## **Wireline Broadband Coverage**

Wireline coverage area may be reported by any of the following:

1. Individual street address\* where broadband service is available to end users.
2. Road Segments, *allowable only for areas where census blocks are greater than 2.0 square miles in area, using:*
  - a. Arizona road centerline data - shapefile format road segments from current local sources are preferred, including all NTIA required fields for address ranges (minimum and maximum address on the segment), street prefix direction, street names, street type, street suffix direction, city, ZIP5 and ZIP4 (if available), with each element in a separate field. Alternatively, each segment can be identified in a table (non-GIS format) with a beginning and ending address range, street prefix direction, street name, street type, street suffix direction, city and ZIP codes in separate fields. Please note that a segment identifier (ID) field to your street network segments will not help us as we do not have access to that network.
  - b. US Census TIGER/Line Road Files - shapefile format road segments from the latest Census TIGER files (2009 or 2010) including all NTIA required fields for address ranges, street prefix direction, street names, street types, street suffix direction, city, etc. Alternatively, each segment can be identified in a table (non-GIS format) with a TIGER Line ID (TLID) for the 2009 or 2010 version of Census TIGER files. BPs should indicate which Census version (2009 or 2010) was used in preparing the submittal.
3. Census block, *allowable only for areas where census blocks are less than or equal to 2.0 square miles in area.*

\* Please note that in all cases, wireline broadband availability will be aggregated to Census Block (for blocks  $\leq 2$  square miles) or Street Segment (for blocks  $> 2$  square miles) as per the NTIA specifications, **and in no case will specific addresses be included in the Arizona or federal broadband maps.**

\* Please note that federal requirements have shifted to protocols based on Census 2010 census blocks and coding. If you haven't made the shift from earlier versions, we'll be glad to help or work with you in transforming and verifying your data in the newer format. When providing data coverage by Census Block, please specify 2000, 2009 or 2010 census information to correctly identify the Census Block FIPS code.

For those providers who wish to submit **FCC Form 477** data, it is imperative that we have information that is more granular than census tract data. We will work with you to review, verify, and adjust such data to properly reflect your broadband coverage.

Any provider offering service boundary/areas, please make it available to DSCI in an appropriate GIS (Geographical Information System) format such as an ESRI shapefile or Google Earth file (KML/KMZ).

## **Wireline Data Format**

*By Address* - Defined as broadband service available, including service type and advertised speed, to a specific “end user” by physical address. Typical submittal formats include excel spreadsheets, flat text files (.csv or .txt) and database tables (Access or SQL). Data should represent the following fields:

| FRN      | Address     | City  | State | ZIP4  | Technology of Transmission | Maximum Downstream Speed | Maximum Upstream Speed | Typical Downstream Speed | Typical Upstream Speed |
|----------|-------------|-------|-------|-------|----------------------------|--------------------------|------------------------|--------------------------|------------------------|
| 19567460 | 123 Main St | Here  | AZ    | 88888 | 10                         | 6                        | 2                      | 5                        | 2                      |
| 19567460 | 222 1st Ave | There | AZ    | 88800 | 41                         | 5                        | 2                      | 4                        | 1                      |
| 19567460 | 445 Elm St  | Every | AZ    | 87654 | 50                         | 10                       | 7                      | 9                        | 7                      |

Where possible, include the category of end user by the following:

| Code | Description       |
|------|-------------------|
| 1    | Residential user  |
| 2    | Governmental user |
| 5    | Other             |

*By Census Block* - In lieu of reporting address-specific data, BPs may provide list of all census blocks, **two square miles or less in area**, in which broadband service is available to end users, along with the same service characteristics address points contain (technology of transmission and maximum and typical speeds).

If this option is employed, BPs are encouraged to use geographic information system (GIS) compatible software to select a subset of census blocks. Please include the full 15 digit FIPS (Federal Information Processing Standards) Census Block ID. These can be identifiers for Census 2009 or 2010 Census Blocks, however please specify which version was used. GIS formats for these resources can be found at the U.S. Census Bureau download sites:

- US Census Bureau’s 2009 TIGER/line files at <http://www.census.gov/geo/www/tiger/tgrshp2009/tgrshp2009.html>
- US Census Bureau’s 2010 TIGER/line files at <http://www.census.gov/geo/www/tiger/tgrshp2010/tgrshp2010.html>

Data should represent the following fields:

| FRN      | Census Block<br>15-digit FIPS | Technology<br>of<br>Transmission | Maximum<br>Downstream<br>Speed | Maximum<br>Upstream<br>Speed | Typical<br>Downstream<br>Speed | Typical<br>Upstream<br>Speed |
|----------|-------------------------------|----------------------------------|--------------------------------|------------------------------|--------------------------------|------------------------------|
| 19567460 | 40059412001036                | 10                               | 6                              | 2                            | 5                              | 2                            |
| 19567460 | 40159501003174                | 41                               | 5                              | 2                            | 4                              | 1                            |
| 19567460 | 40139410001010                | 50                               | 10                             | 7                            | 9                              | 7                            |

*By Road Segment* - in lieu of reporting address-specific data, BPs may report a list of street segments with address ranges in which broadband service is available to end users along with the same service characteristics address points (technology of transmission and speed).

If this option is employed, BPs are encouraged to use geographic information system (GIS) compatible software to select a subset of road segments (from either of the GIS datasets listed below). The basic service information fields (Technology of Transmission, Maximum Advertised Downstream/Upstream speed and Typical Downstream/Upstream speed) should then be attached to each road segment to characterize the broadband service along each road.

US Census Bureau TIGER/line shapefiles can be accessed at the previously listed sites. Again, please report which data set was used in preparing your data.

| FRN      | Min<br>Address | Max<br>Address | Prefix Dir | Street<br>name | Street<br>type | City  | State | ZIP   |
|----------|----------------|----------------|------------|----------------|----------------|-------|-------|-------|
| 19567460 | 1              | 100            | E          | Easy           | Ln             | Here  | AZ    | 88888 |
| 19567460 | 101            | 250            | E          | Easy           | Ln             | Here  | AZ    | 88888 |
| 19567460 | 301            | 399            | W          | First          | St             | There | AZ    | 87654 |

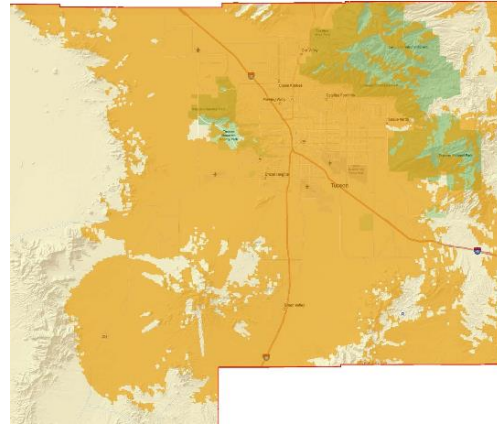
### **Wireless Broadband Cover - Fixed, Mobile & Satellite**

We would prefer that all information submitted for this requirement is in a **geographic data format with polygons depicting wireless service areas** and associated service characteristics (technology of transmission, speed), but may be reported by any of the following:

1. ESRI shapefile
2. Google Earth as either .kml or .kmz
3. Tower location, including
  - a) Latitude and Longitude
  - b) Tower height and/or Equipment height
  - c) Spectrum Used
  - d) Antenna specifications (omnidirectional, sectorized, etc) - if using sectorized, provide Azimuth direction and beamwidth (60 degrees, 90 degrees, 180 degrees)

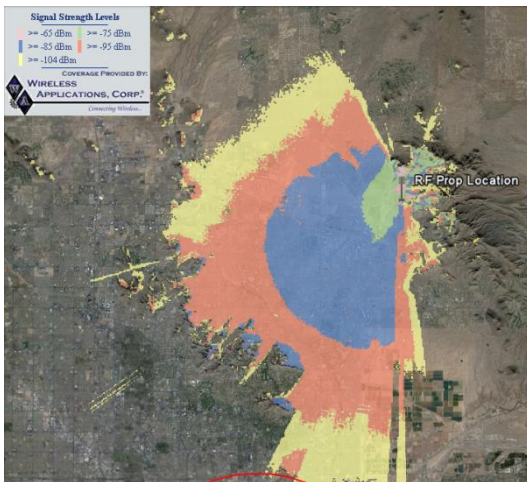
## **ESRI Shapefile**

Please include attribute fields or metadata depicting technology of transmission, lat/long, tower height and maximum upstream/downstream speeds.



## **Google Earth**

Please include metadata depicting technology of transmission, lat/long, tower height and maximum upstream/downstream speeds.



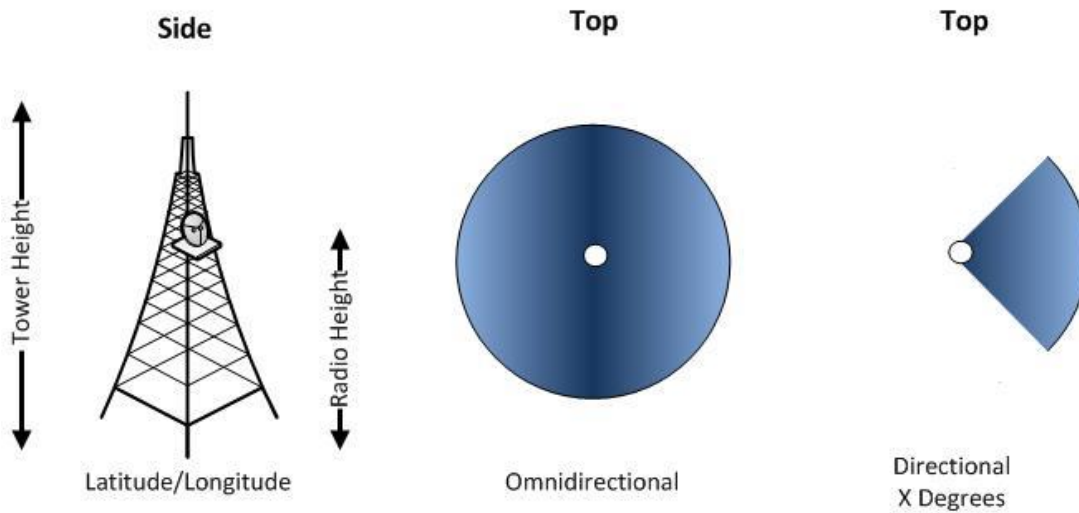
## **Tower Location**

For BPs that do not have coverage data in a geographical/polygon format, a description of tower location with lat/long, height, spectrum, azimuth, radiated power, and speed as follows:



| Tower Height/Equipment (ft) | FRN        | Latitude  | Longitude   | Technology of Transmission | Maximum Downstream Speed | Maximum Upstream Speed |
|-----------------------------|------------|-----------|-------------|----------------------------|--------------------------|------------------------|
| 100/60                      | 0019567460 | 33.419028 | -112.142889 | 70                         | 5                        | 3                      |
| 70/60                       | 0019567460 | 32.995917 | -111.745806 | 70                         | 5                        | 3                      |
| 50/50                       | 0019567460 | 35.241944 | -111.610722 | 71                         | 6                        | 4                      |

\*include typical upstream/downstream where possible



## Wireless Spectrum

The NTIA has developed specific codes for wireless spectrum use, as follows:

| Code | Description   |
|------|---|
| 1    | is Cellular spectrum (824-849MHz; 869-894) used to provide service  |
| 2    | is 700 MHz spectrum (698-758 MHz; 775-788 MHz; 775-788 MHz) used to provide service                       |
| 3    | is Broadband Personal Communications Services spectrum (1850-1915 MHz; 1930-1995) used to provide service |
| 4    | is Advanced Wireless Services spectrum (1710-1755 MHz; 2100-2155) used to provide service                 |
| 5    | is Broadband Radio Service/Educational Broadband Service spectrum (2496-2690 MHz) used to provide service |
| 6    | is Unlicensed (including broadcast television "white spaces" ) spectrum Used to provide service           |
| 7    | is Specialized Mobile Radio Service (SMR) (817-824 MHz; 862-869 MHz; 896-901 MHz; 935-940 MHz)            |
| 8    | is Wireless Communications Service (WCS) spectrum (2305-2320 MHz; 2345-2360 MHz), 3650-3700 MHz           |
| 9    | Satellite (L-band, Big LEO, Little LEO, 2 GHz)  |

## Support

***Please direct any questions regarding this document, in its entirety, to:***

**Nolan Straabe, Data Site Consortium, Inc.**  
**E-mail: [nolan@straabe.com](mailto:nolan@straabe.com), Mobile: 602-999-0143**

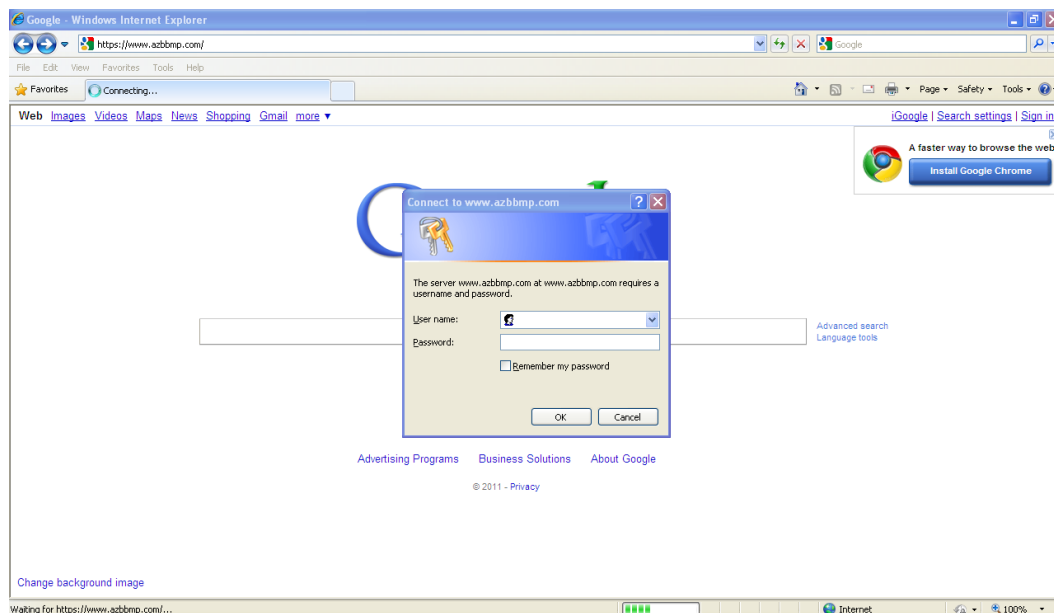
# Arizona Broadband Provider Services Portal

<http://www.azbbmp.com/>

The Arizona Broadband Provider Services Portal was exclusively designed for Arizona Broadband Providers so that they may securely transmit and receive data throughout the life cycle of NTIA/FCC project.

To establish a secure and simple platform, an HTTPS web interface is coupled with unique credentials (username/password) for each broadband provider. There is no need to download any software to use the platform. It will work on any Internet browser, including; Internet Explorer, Safari, Firefox and Chrome.

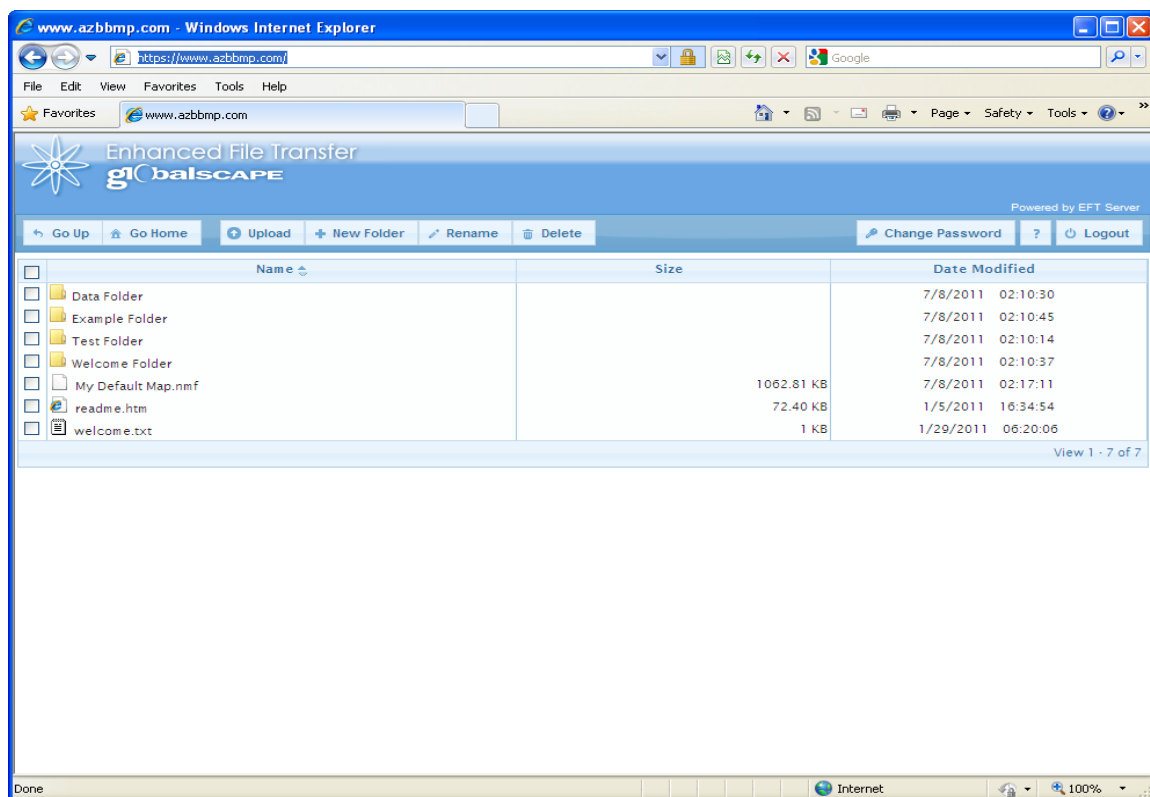
Once a provider has received their username and password, they can reach the portal via <https://www.azbbmp.com/> and sign in to their secure account.



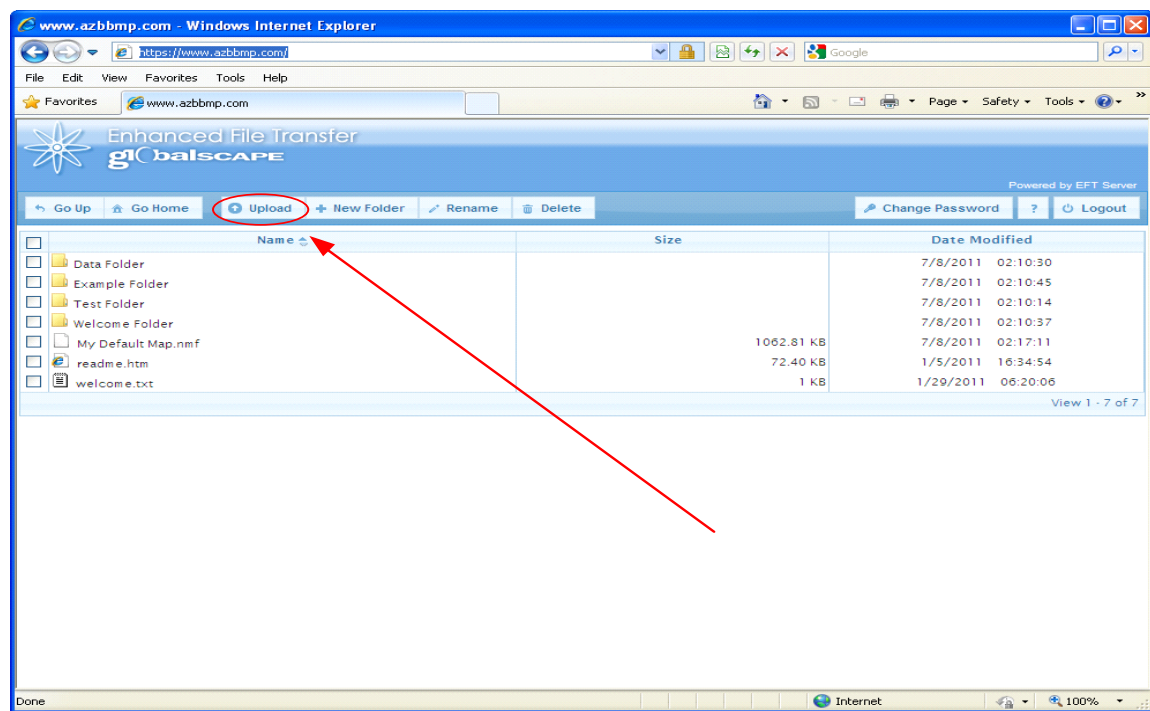
The user will be prompted for their unique credentials to enter the portal. Credentials will only be active during upload and verification timeframes and will be changed for each submittal cycle.



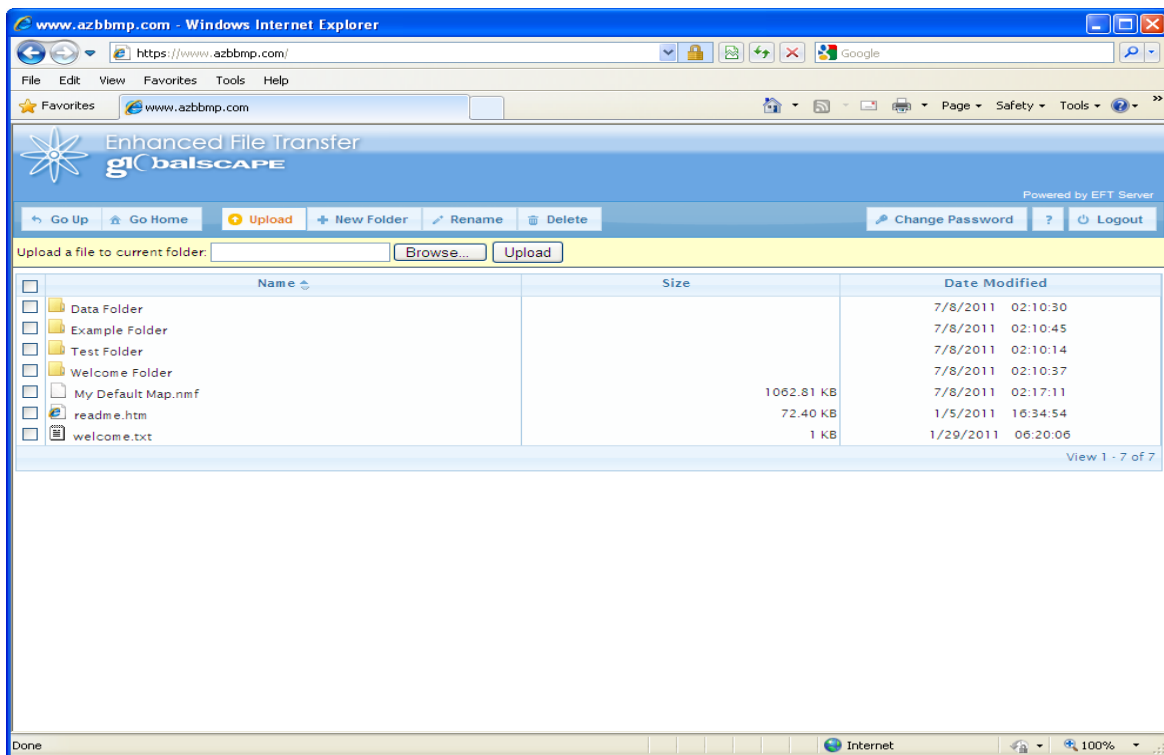
The portal interface enables the end-user upload files from their PC to the server.



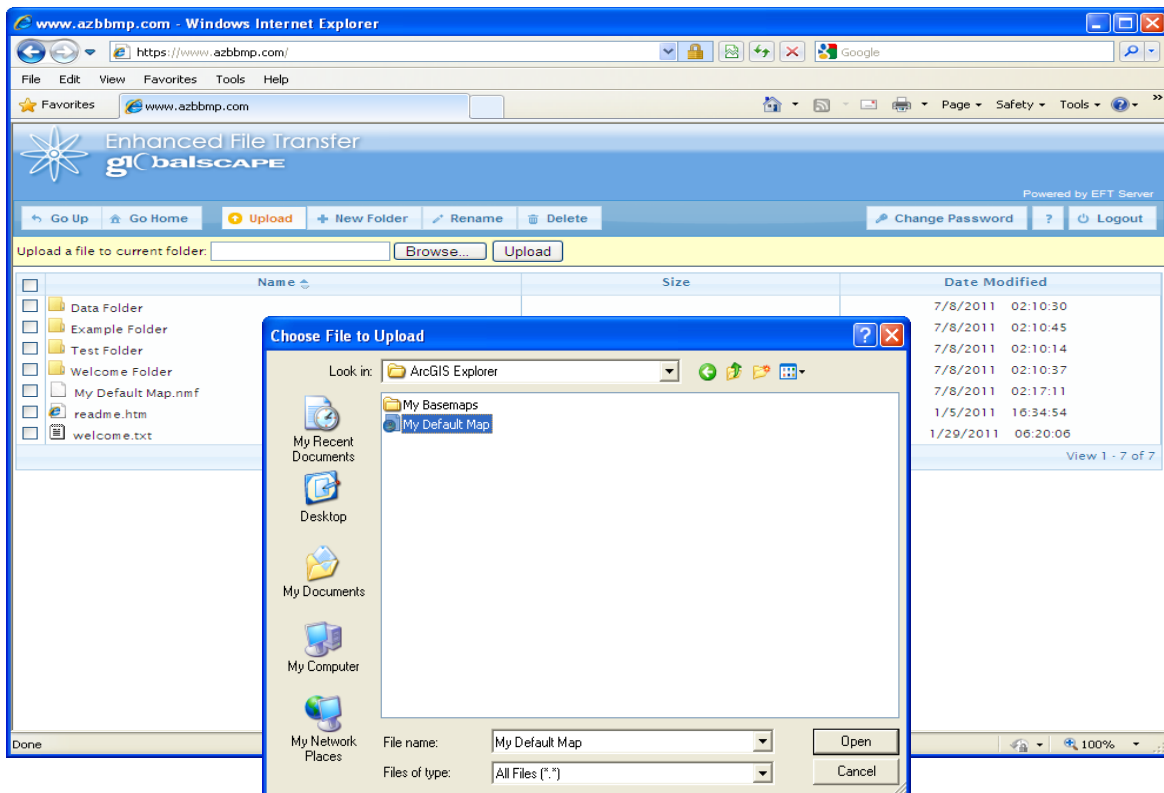
To upload files click the “Upload” button at the top of the page.



After clicking “Upload” a yellow bar with a field appears below the “Upload” button. Click “Browse” to choose a file from your computer to upload.

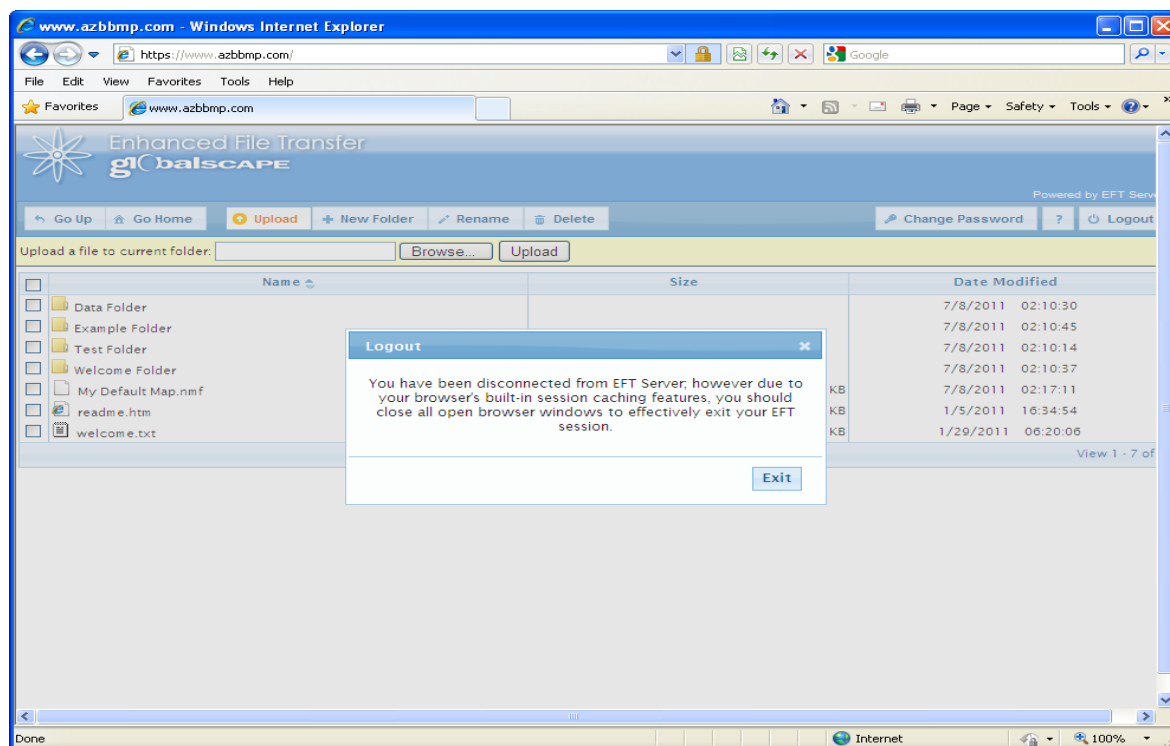


Chose your file to upload and click “Open”





Once the file is uploaded, you will see it in the viewer window. When you have completed uploading all of your documents, click “Log Out” in the upper right hand corner.



You have successfully completed your file upload. Thank you.

After the files have been successfully uploaded, the user credentials will be deactivated and the files will be transferred to an off-net, secure and encrypted Network Attached Storage device.

## **Support**

***Please direct any questions regarding this document, in its entirety, to:***

**Nolan Straabe, Data Site Consortium, Inc. (DSCI)  
E-mail: [nolan@straabe.com](mailto:nolan@straabe.com), Mobile: 602-999-0143**